

Product datasheet for RC207820L3

GPIHBP1 (NM_178172) Human Tagged Lenti ORF Clone

Product data:

Product Type:	Expression Plasmids
Product Name:	GPIHBP1 (NM_178172) Human Tagged Lenti ORF Clone
Tag:	Myc-DDK
Symbol:	GPIHBP1
Synonyms:	GPI-HBP1; HYPL1D
Mammalian Cell Selection:	Puromycin
Vector:	pLenti-C-Myc-DDK-P2A-Puro (PS100092)
E. coli Selection:	Chloramphenicol (34 ug/mL)
ORF Nucleotide Sequence:	The ORF insert of this clone is exactly the same as(RC207820).
Restriction Sites:	SgfI-MluI
Cloning Scheme:	

Cloning sites used for ORF Shuttling:



* The last codon before the Stop codon of the ORF.

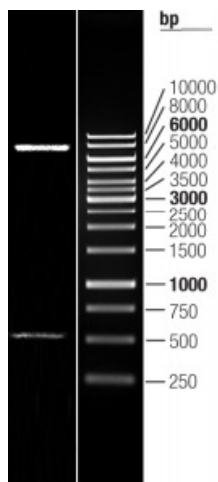
ACCN:	NM_178172
ORF Size:	552 bp



[View online »](#)

OTI Disclaimer:	The molecular sequence of this clone aligns with the gene accession number as a point of reference only. However, individual transcript sequences of the same gene can differ through naturally occurring variations (e.g. polymorphisms), each with its own valid existence. This clone is substantially in agreement with the reference, but a complete review of all prevailing variants is recommended prior to use. More info
OTI Annotation:	This clone was engineered to express the complete ORF with an expression tag. Expression varies depending on the nature of the gene.
Components:	The ORF clone is ion-exchange column purified and shipped in a 2D barcoded Matrix tube containing 10ug of transfection-ready, dried plasmid DNA (reconstitute with 100 ul of water).
Reconstitution Method:	<ol style="list-style-type: none">1. Centrifuge at 5,000xg for 5min.2. Carefully open the tube and add 100ul of sterile water to dissolve the DNA.3. Close the tube and incubate for 10 minutes at room temperature.4. Briefly vortex the tube and then do a quick spin (less than 5000xg) to concentrate the liquid at the bottom.5. Store the suspended plasmid at -20°C. The DNA is stable for at least one year from date of shipping when stored at -20°C.
RefSeq:	NM_178172.2 , NP_835466.1
RefSeq Size:	2297 bp
RefSeq ORF:	555 bp
Locus ID:	338328
UniProt ID:	Q8IV16
Cytogenetics:	8q24.3
Protein Families:	Druggable Genome
MW:	19.8 kDa
Gene Summary:	This gene encodes a capillary endothelial cell protein that facilitates the lipolytic processing of triglyceride-rich lipoproteins. The encoded protein is a glycosylphosphatidylinositol-anchored protein that is a member of the lymphocyte antigen 6 (Ly6) family. This protein plays a major role in transporting lipoprotein lipase (LPL) from the subendothelial spaces to the capillary lumen. Mutations in this gene are the cause of hyperlipoproteinemia, type 1D. Alternate splicing results in multiple transcript variants. [provided by RefSeq, Sep 2014]

Product images:



Double digestion of RC207820L3 using SgfI and MluI