

## Product datasheet for **RC207817**

### NSUN6 (NM\_182543) Human Tagged ORF Clone

#### Product data:

Product Type:	Expression Plasmids
Product Name:	NSUN6 (NM_182543) Human Tagged ORF Clone
Tag:	Myc-DDK
Symbol:	NSUN6
Synonyms:	4933414E04Rik; ARL5B-AS1; NOPD1
Mammalian Cell Selection:	Neomycin
Vector:	pCMV6-Entry (PS100001)
E. coli Selection:	Kanamycin (25 ug/mL)



[View online »](#)

**ORF Nucleotide Sequence:**

>RC207817 ORF sequence  
 Red=Cloning site Blue=ORF Green=Tags(s)

TTTTGTAATACGACTCACTATAGGGCGGCCGGAATTCGTCGACTGGATCCGGTACCGAGGAGATCTGCC  
 GCC**CGCATCGCC**

ATGTCTATTTTCCCTAAGATATCTTTGAGACCTGAGGTTGAAAATATCTTAAGGAAGGCTTTATGAATA  
 AGGAGATTGTGACTGCTTTAGGTAACAAGAAGCAGAAAGGAAGTTTGAACTTTGTTAAAGCACCTGTC  
 ACATCCTCCATCATTACAACCTGCAGAGTGAATACACATTTAGCCTCAGTACAACATGTAAAAATCTG  
 TTACTIONTGAACCTCAGAAGCAGTTTAAATGGATTAAGTGTTCCTATTCTTCAACATCCAGACCTCAAG  
 ATGTGTTACTTATTCTGTTATTGGACCCAGAAAGAATATTAACAAACAGTGTGAAGCCATTGTTGG  
 AGCCAGTGTGGCAATGCAGTTTAAAGAGGAGCCCATGTCTATGCCCCAGGAATTGTGTCAGCATCACAA  
 TTTATGAAAGCTGGAGATGTTATTTCTGTATACTCTGATATTAAGGAAAATGTAAGAAAGGAGCCAAAG  
 AATTTGATGGAACAAAAGTATTTCTTGAAATGGGATTTCTGAACTAAGCCGCAAAGAAATCTTCAGTGG  
 ATTACCTGAACTGAAAGGCATGGGCATAAGAATGACAGAACAGTATATCTCAGCCCTTCATTTGACAGT  
 GTACTGCCCGTTACTTATTTTTACAAAATTTGCCATCTGCCTTAGTAAGTCATGTACTAAATCCTCAAC  
 CTGGAGAGAAGATTCTAGACTTGTGTGCAGCACCTGGAGGGAAAACAACACACATTGCAGCACTAATGCA  
 TGATCAGGGAGAAGTTATAGCACTGGATAAAATCTTCAACAAAGTAGAAAAATCAAACAGAATGCCTTA  
 TTGTTAGGGCTGAATCCATCAGGGCATTGTTGTTTGTGGAACAAAGCGGTTAAACTTGATATGGTGG  
 AGGACACAGAAGGAGAACCTCCATTTCTACCAGAAATCCTTTGACCGAATCTTCTGGATGCACCTGTAG  
 TGGAAATGGGACAGAGACCAACATGGCCTGTACTTGGTCTGTGAAGGAAGTGGCATCATACAGCCATTA  
 CAGCGAAAATCTTCACTGCAGCGGTTCACTGCTGAAGCAGAGGGTGTGCTGGTTTATAGCACGTGCA  
 CTATAACACTGGCCGAAAATGAAGAACAGTTGCTGGGCCCTGACAAAATTTCCCTGCTTCAGCTTCA  
 GCCCAGGAACCCGAGATTGGAGGAGAAGGAATGAGGGAGCTGGGCTCTCATGTGAACAGTTGAAACAG  
 CTGCAGCGATTTGATCCATCGGCTGTGCCATTACCGGACACTGCATGGACTCTCTTAGAGAGGCCAGAA  
 GAGAAGACATGTTGCGTCTGGCTAATAAGGACTCTATAGGTTTTTTTTATTGCAAAAATTTGAAAATGCAA  
 AAGCACA

**ACGCGT**ACGCGGCCGCTCGAGCAGAAACTCATCTCAGAAGAGGATCTGGCAGCAATGATATCCTGGATT  
 ACAAGGATGACGACGATAAGGTTTAA

**Protein Sequence:**

>RC207817 protein sequence  
 Red=Cloning site Green=Tags(s)

MSIFPKISLRPEVENYLKEGFMNKEIVTALGKQEAERKFETLLKHL SHPPSFTTTRVNTHLASVQHVKNL  
 LLDLQKQFNGLSVPILQHPDLQDVLLIPVIGPRKNIKKQCEAIVGAQCNAVLRGAHVYAPGIVSASQ  
 FMKAGDVISVYSDIKGKCKGAKEFDGTVFLNGISELSRKEIFSGLPELKGMGIRMTEPVYLSPSFDS  
 VLPRYLFLQNLPSALVSHVLPNPQGEKILDCAAPGGKTTTHIAALMHDQGEVIALDKIFNKVEKIKQNAL  
 LLGLNSIRAFCFDGTAKVCLDMVEDTEGEPFLPESFDRILLDAPCSGMGQRPNMACTWSVKEVASYQPL  
 QRKLFATAAVQLLKPEGVLVYSTCTITLAENEEQVAWALTKFPCLQLQPQEPQIGGEGMRGAGLSCEQLKQ  
 LQRFDPNAVPLPDTDMDSLREARREDMLRLANKDSIGFFIAKFKCKST

**TR**TRPLEQKLI SEEDLAANDILDYKDDDDKV

**Chromatograms:**

[https://cdn.origene.com/chromatograms/mk6337\\_h07.zip](https://cdn.origene.com/chromatograms/mk6337_h07.zip)

**Restriction Sites:**

Sgfl-MluI

**Cloning Scheme:**


**ACCN:** NM\_182543

**ORF Size:** 1407 bp

**OTI Disclaimer:** The molecular sequence of this clone aligns with the gene accession number as a point of reference only. However, individual transcript sequences of the same gene can differ through naturally occurring variations (e.g. polymorphisms), each with its own valid existence. This clone is substantially in agreement with the reference, but a complete review of all prevailing variants is recommended prior to use. [More info](#)

**OTI Annotation:** This clone was engineered to express the complete ORF with an expression tag. Expression varies depending on the nature of the gene.

**Components:** The ORF clone is ion-exchange column purified and shipped in a 2D barcoded Matrix tube containing 10ug of transfection-ready, dried plasmid DNA (reconstitute with 100 ul of water).

- Reconstitution Method:**
1. Centrifuge at 5,000xg for 5min.
  2. Carefully open the tube and add 100ul of sterile water to dissolve the DNA.
  3. Close the tube and incubate for 10 minutes at room temperature.
  4. Briefly vortex the tube and then do a quick spin (less than 5000xg) to concentrate the liquid at the bottom.
  5. Store the suspended plasmid at -20°C. The DNA is stable for at least one year from date of shipping when stored at -20°C.

**Note:** Plasmids are not sterile. For experiments where strict sterility is required, filtration with 0.22um filter is required.

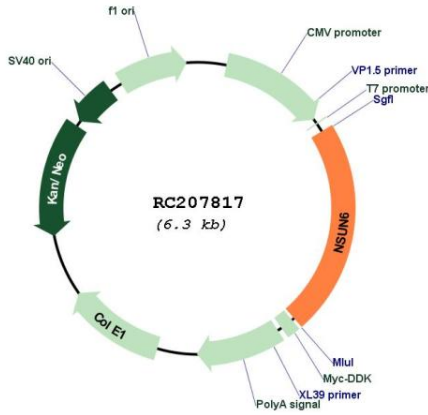
**RefSeq:** [NM\\_182543.5](#)

**RefSeq Size:** 2570 bp

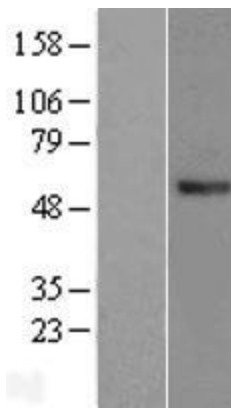
**RefSeq ORF:** 1410 bp

**Locus ID:** 221078

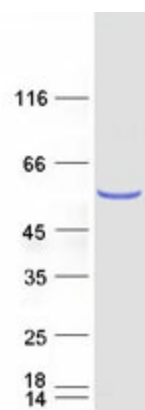
**UniProt ID:** Q8TEA1  
**Cytogenetics:** 10p12.31  
**Protein Families:** Druggable Genome  
**MW:** 51.8 kDa  
**Gene Summary:** May have S-adenosyl-L-methionine-dependent methyl-transferase activity.[UniProtKB/Swiss-Prot Function]

**Product images:**


Circular map for RC207817



Western blot validation of overexpression lysate (Cat# [LY405497]) using anti-DDK antibody (Cat# [TA50011-100]). Left: Cell lysates from untransfected HEK293T cells; Right: Cell lysates from HEK293T cells transfected with RC207817 using transfection reagent MegaTran 2.0 (Cat# [TT210002]).



Coomassie blue staining of purified NSUN6 protein (Cat# [TP307817]). The protein was produced from HEK293T cells transfected with NSUN6 cDNA clone (Cat# RC207817) using MegaTran 2.0 (Cat# [TT210002]).