

## Product datasheet for **RC207814**

### COX7B2 (NM\_130902) Human Tagged ORF Clone

#### Product data:

Product Type: Expression Plasmids  
Product Name: COX7B2 (NM\_130902) Human Tagged ORF Clone  
Tag: Myc-DDK  
Symbol: COX7B2  
Mammalian Cell Selection: Neomycin  
Vector: pCMV6-Entry (PS100001)  
E. coli Selection: Kanamycin (25 ug/mL)  
ORF Nucleotide Sequence: >RC207814 ORF sequence  
Red=Cloning site Blue=ORF Green=Tags(s)

TTTTGTAATACGACTCACTATAGGGCGGCCGGAATTCGTCGACTGGATCCGGTACCGAGGAGATCTGCC  
GCC**CGATCGCC**

ATGTTTCCCTTGCCAGAAATGCACTAAGCAGTCTCAAGATTCAAAGCATTCTGCAAAGCATGGCAAGAC  
ATAGCCATGTAAACACTCACCAGATTTTCATGATAAATATGGTAATGCTGTGCTAGCCAGTGGAAGTGC  
TTTCTGTGTTGCTACATGGGTGTTACAGCCACTCAGATTGGAATAGAATGGAACCTATCCCCTGTTGGC  
AGAGTTACCCCAAAGAGTGGAACATCAG

**ACGCGT**ACGCGGCCGCTCGAGCAGAACTCATCTCAGAAGAGGATCTGGCAGCAAATGATATCCTGGATT  
ACAAGGATGACGACGATAAGGTTTAA

Protein Sequence: >RC207814 protein sequence  
Red=Cloning site Green=Tags(s)  
MFPLARNALSSLKIQSILQSMARHSHVKHSPDFHDKYGNVAVLASGTAFVATWVFTATQIGIEWNLSPVG  
RVTPKEWKHQ

**TRTRPLEQKLISEEDLAANDILDYKDDDDKV**

Chromatograms: [https://cdn.origene.com/chromatograms/mk6343\\_g08.zip](https://cdn.origene.com/chromatograms/mk6343_g08.zip)

Restriction Sites: SgfI-MluI



[View online »](#)

**Cloning Scheme:**


**ACCN:** NM\_130902

**ORF Size:** 240 bp

**OTI Disclaimer:** The molecular sequence of this clone aligns with the gene accession number as a point of reference only. However, individual transcript sequences of the same gene can differ through naturally occurring variations (e.g. polymorphisms), each with its own valid existence. This clone is substantially in agreement with the reference, but a complete review of all prevailing variants is recommended prior to use. [More info](#)

**OTI Annotation:** This clone was engineered to express the complete ORF with an expression tag. Expression varies depending on the nature of the gene.

**Components:** The ORF clone is ion-exchange column purified and shipped in a 2D barcoded Matrix tube containing 10ug of transfection-ready, dried plasmid DNA (reconstitute with 100 ul of water).

**Reconstitution Method:**

1. Centrifuge at 5,000xg for 5min.
2. Carefully open the tube and add 100ul of sterile water to dissolve the DNA.
3. Close the tube and incubate for 10 minutes at room temperature.
4. Briefly vortex the tube and then do a quick spin (less than 5000xg) to concentrate the liquid at the bottom.
5. Store the suspended plasmid at -20°C. The DNA is stable for at least one year from date of shipping when stored at -20°C.

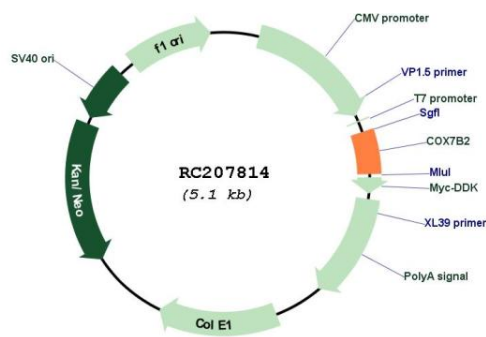
**RefSeq:** [NM\\_130902.1](#), [NP\\_570972.1](#)

**RefSeq Size:** 566 bp

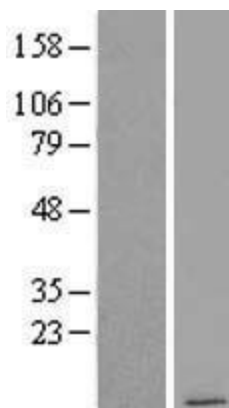
**RefSeq ORF:** 246 bp

**Locus ID:** 170712  
**UniProt ID:** [Q8TF08](#)  
**Cytogenetics:** 4p12  
**Protein Pathways:** Alzheimer's disease, Cardiac muscle contraction, Huntington's disease, Metabolic pathways, Oxidative phosphorylation, Parkinson's disease  
**MW:** 8.9 kDa  
**Gene Summary:** This protein is one of the nuclear-coded polypeptide chains of cytochrome c oxidase, the terminal oxidase in mitochondrial electron transport.[UniProtKB/Swiss-Prot Function]

### Product images:



Circular map for RC207814



Western blot validation of overexpression lysate (Cat# [LY408887]) using anti-DDK antibody (Cat# [TA50011-100]). Left: Cell lysates from untransfected HEK293T cells; Right: Cell lysates from HEK293T cells transfected with RC207814 using transfection reagent MegaTran 2.0 (Cat# [TT210002]).