

Product datasheet for **RC207813**

C1orf227 (SPATA45) (NM_001024601) Human Tagged ORF Clone

Product data:

Product Type: Expression Plasmids
Product Name: C1orf227 (SPATA45) (NM_001024601) Human Tagged ORF Clone
Tag: Myc-DDK
Symbol: C1orf227
Synonyms: C1orf227
Mammalian Cell Selection: Neomycin
Vector: pCMV6-Entry (PS100001)
E. coli Selection: Kanamycin (25 ug/mL)
ORF Nucleotide Sequence: >RC207813 ORF sequence
Red=Cloning site Blue=ORF Green=Tags(s)

TTTTGTAATACGACTCACTATAGGGCGCCGGGAATTCGTCGACTGGATCCGGTACCGAGGAGATCTGCC
GCC**CGGATCGCC**

ATGGCATCTATAAACAGAACCATTTGAAATAATGAAAAACATGGAGTAAGCAAACAACATCTCCTGGAGG
AGATAAACAAAAAGCGTGAATCCAACCTGCTTGGTGAACGAAGCAATCAAGTCAGCTTACTGAGAGTTCA
AAAGAGGCACTTCCCGGATGCCTATCAGTCCTTTACTGATACCACAACCAAGAGCCTGTCCCAACAGT
GGCAGGAGCTCCTGGATCAAGCTGAGTCTCCTTGCTCACATGGAGAGAAAGCACTTCCACCAAAAAATA
ATGCCATATTTGGA

ACGCGTACGCGGCCGCTCGAGCAGAAACTCATCTCAGAAGAGGATCTGGCAGCAAATGATATCCTGGATT
ACAAGGATGACGACGATAAGGTTTAA

Protein Sequence: >RC207813 protein sequence
Red=Cloning site Green=Tags(s)

MASINRTIEIMKKHGVSKQHLLLEEINKKRESNCLVERSNQVSLLRVQKRHFDPAYQSFTDTTTTKEPVPNS
GRSSWIKLSLLAHMERKHFPKNNNAIFG

TRTRPLEQKLISEEDLAANDILDYKDDDDKV

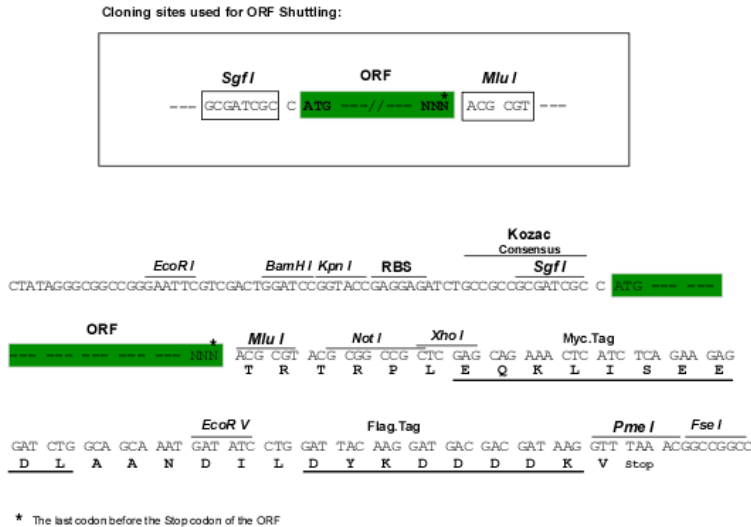
Chromatograms: https://cdn.origene.com/chromatograms/mk6544_b07.zip

Restriction Sites: SgfI-MluI



[View online »](#)

Cloning Scheme:



ACCN: NM_001024601

ORF Size: 294 bp

OTI Disclaimer: The molecular sequence of this clone aligns with the gene accession number as a point of reference only. However, individual transcript sequences of the same gene can differ through naturally occurring variations (e.g. polymorphisms), each with its own valid existence. This clone is substantially in agreement with the reference, but a complete review of all prevailing variants is recommended prior to use. [More info](#)

OTI Annotation: This clone was engineered to express the complete ORF with an expression tag. Expression varies depending on the nature of the gene.

Components: The ORF clone is ion-exchange column purified and shipped in a 2D barcoded Matrix tube containing 10ug of transfection-ready, dried plasmid DNA (reconstitute with 100 ul of water).

Reconstitution Method:

1. Centrifuge at 5,000xg for 5min.
2. Carefully open the tube and add 100ul of sterile water to dissolve the DNA.
3. Close the tube and incubate for 10 minutes at room temperature.
4. Briefly vortex the tube and then do a quick spin (less than 5000xg) to concentrate the liquid at the bottom.
5. Store the suspended plasmid at -20°C. The DNA is stable for at least one year from date of shipping when stored at -20°C.

RefSeq: [NM_001024601.3](#)

RefSeq Size: 537 bp

RefSeq ORF: 297 bp

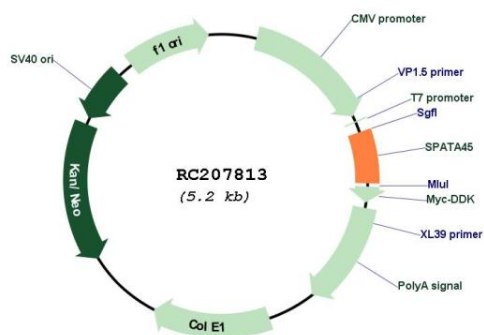
Locus ID: 149643

UniProt ID: [Q537H7](#)

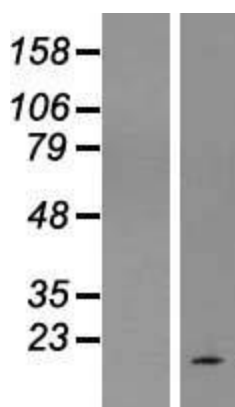
Cytogenetics: 1q32.3

MW: 11.4 kDa

Product images:



Circular map for RC207813



Western blot validation of overexpression lysate (Cat# [LY422517]) using anti-DDK antibody (Cat# [TA50011-100]). Left: Cell lysates from untransfected HEK293T cells; Right: Cell lysates from HEK293T cells transfected with RC207813 using transfection reagent MegaTran 2.0 (Cat# [TT210002]).