

## Product datasheet for **RC207803**

### CCDC105 (NM\_173482) Human Tagged ORF Clone

#### Product data:

Product Type:	Expression Plasmids
Product Name:	CCDC105 (NM_173482) Human Tagged ORF Clone
Tag:	Myc-DDK
Symbol:	CCDC105
Mammalian Cell Selection:	Neomycin
Vector:	pCMV6-Entry (PS100001)
E. coli Selection:	Kanamycin (25 ug/mL)



[View online »](#)

**ORF Nucleotide Sequence:**

>RC207803 ORF sequence  
 Red=Cloning site Blue=ORF Green=Tags(s)

TTTTGTAATACGACTCACTATAGGGCGGCCGGAATTCGTCGACTGGATCCGGTACCGAGGAGATCTGCC  
 GCC**CGATCGCC**

ATGCGCGTGTGGTACCCCGGCTGAGCGCAGCCAGGACACACGCGTTGGGGCCCAGCATGGCGCGAGG  
 CAGCTCAGGCCATGGCGAGGACCGCGCACATTCTGACCGATCGCTGCGGGCAGGAGGCGGTGACCATGTG  
 GCAGCCCAAGGACAGCGTCTGGACCCGAACGTGGCCACCACCTCGGCCGCGCCGCTACATCCAGCCC  
 TGGCGCTTCCGCGTGGAGATGATCAAAGGCGCGGCACCTTGGAGAAGCCGCGCCAGGCGAGGGCGTCA  
 CGCTGTGGAAGGGCAAGATGAAGCCGCCGCTGGTACGCCGCTGCCGCTACCTTGCACCGCAAAGC  
 GCGCGCCTGCAGACCACCGAGGTGGTGCACGCGCACGCGGTGGAGCGCGCTCACCGCCGCCGCTC  
 GGCCGCGCGCAGCACCAGATTAACGGGCGGGTGCACAGCTGCTGCGCCAGCGGAGGTACCGACCACA  
 GGCTCAGCGAAGTGCGAAGGTCTGCTTATTAACCAGCAGAGCGTCAAGCTGCGGGGCTACAGGCCCAA  
 GTCTGAGAAGTCCCTGACAAAGCTGACAGTATGCTTACATGGGAGAAAGAGGAGCTGAAAAGCATGAAG  
 AGGAAAATGGAGAGAGATATGGAAAATCAGAGGTCTACTCAAGACCCTGGCCTCTGCCGAGACTC  
 TGAACCTCTGCTTCAAGGAGCGGCTCAAGCCGTGGACCTCATGAACCAGCCTCTGGACAAGTTCTGGA  
 GCAGGCCAGACGCCACTCATGGGTGAACCTCTCCCGAGCCCCACTCCACGCACACAGGGTCAAGAAACG  
 CCTCTCCAGACCCTGTGGGCACCTATAACCCAGCGTGCCTTGGCGCTAAACGAAGCCAAGCGGTTGT  
 TGGTCGAGTCCAAGGACACCTTGGTAGAAATGGCAAAGAACGAGGTGGACGTCCGGGAGCAACAGCTGCA  
 GATAAGCGACCGTGTGTGCGCTCGTGGCGCAGAAGGCGAGCGAGACCTGGAGCTGAAGGAAAGATTA  
 AATATGACGTTAGGACTGATGAGGGAACTATCTCCGGTGTACGAAATATAACCAAGAGTTGTACACCA  
 CCCACGGTCTCATCAAGGTCTCTGTGCAAGTTCACCTGGAGACCGCAGAAAAGCTGGACAGACCCT  
 GGTTCCGATGTACCAGAGACACGTGGGCACCAACTCCCGAGGCTGCGCGCTCGCACAGGGCACCGGAC  
 AAGCTGCAGTGCCACATCACGTACCTGGAAAAGAACCTGGAGGAGCTGCTCGCCACGCACAGAACCTCA  
 CCTGGGCCTCAACTGCAAGAACATCGGCATGAGGTGGACGGCAACGTGGTGCCTGCGCCTGCGCCA  
 GCGGCAACCGCACGTGTCTACGAGCAGGCGCAGCGCTGGTTAAGGACTGGGACCCGCGCACGCCGCC  
 CCGCGCAGCAAGAGCAGCGCGGACCCC

AG**CGGACCG**ACGCGTACGCGGCCGCTCGAGCAGAAACTCATCTCAGAAGAGGATCTGGCAGCAAATGATATCC  
 TGGATTACAAGGATGACGACGATAAGGTTTAA

**Protein Sequence:**

>RC207803 protein sequence  
 Red=Cloning site Green=Tags(s)

MRVLVPPAERSQDTRVGPAPWREAAQAMARTAHILTDRCGQEAVTMWQPKDSVLDPNVAHHLGRAAYIQP  
 WRFRVEMIKGGTLEKPPPGEVTLWKGKMKPPAWYARLPLPLHRKARALQTTEVVHAHARGARLTAARL  
 GRAQHQINGRVRQLLRQREVTDHRLSEVRKGLLINQSVKLRGYPKSEKVPDKADSMLTWEKEELKSMK  
 RKMERDMEKSEVLLKTLASCRDTLNFCKERLQAVDLMNQPLDKVLEQARRHSWVNL SRAPTPTQGGQKT  
 PPPDPVGTYNPACALALNEAKRLLVESKDTLVEMAKNEVDVREQQLQISDRVCASLAQKASETLELKERL  
 NMTLGLMRGTILRCKYQNQELYTTHGLIKGPLSKVHLETAEKLDRLPLVRMYQRHVGTQLPEAARLAQGTD  
 KLQCHITYLEKNLEELLATHKNL TWGLNCKNIGHEVDGNVRLRLRQRQPHVCYEQARLVKDWDPRTPP  
 PRSKSSADP

**SGP**TRTRPLEQKLI SEEDLAANDILDYKDDDDKV

**Chromatograms:**

[https://cdn.origene.com/chromatograms/mk6749\\_d09.zip](https://cdn.origene.com/chromatograms/mk6749_d09.zip)

**Restriction Sites:**

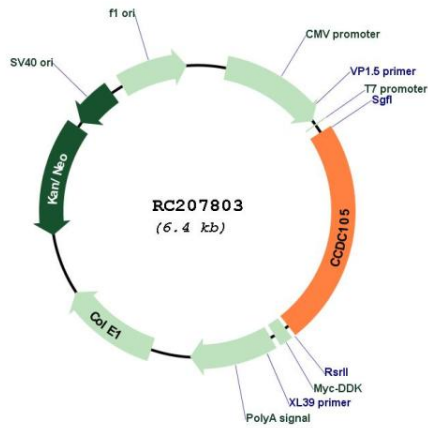
Sgfl-RsrII

**Cloning Scheme:**

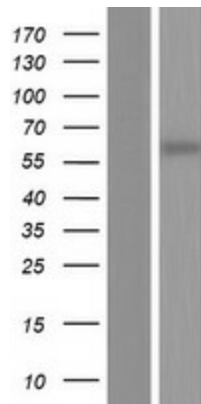

- ACCN:** NM\_173482
- ORF Size:** 1497 bp
- OTI Disclaimer:** The molecular sequence of this clone aligns with the gene accession number as a point of reference only. However, individual transcript sequences of the same gene can differ through naturally occurring variations (e.g. polymorphisms), each with its own valid existence. This clone is substantially in agreement with the reference, but a complete review of all prevailing variants is recommended prior to use. [More info](#)
- OTI Annotation:** This clone was engineered to express the complete ORF with an expression tag. Expression varies depending on the nature of the gene.
- Components:** The ORF clone is ion-exchange column purified and shipped in a 2D barcoded Matrix tube containing 10ug of transfection-ready, dried plasmid DNA (reconstitute with 100 ul of water).
- Reconstitution Method:**
1. Centrifuge at 5,000xg for 5min.
  2. Carefully open the tube and add 100ul of sterile water to dissolve the DNA.
  3. Close the tube and incubate for 10 minutes at room temperature.
  4. Briefly vortex the tube and then do a quick spin (less than 5000xg) to concentrate the liquid at the bottom.
  5. Store the suspended plasmid at -20°C. The DNA is stable for at least one year from date of shipping when stored at -20°C.
- RefSeq:** [NM\\_173482.1](#), [NP\\_775753.1](#)
- RefSeq Size:** 1751 bp
- RefSeq ORF:** 1500 bp
- Locus ID:** 126402
- UniProt ID:** [Q8IYK2](#)
- Cytogenetics:** 19p13.12

MW: 56.9 kDa

**Product images:**



Circular map for RC207803



Western blot validation of overexpression lysate (Cat# [LY406599]) using anti-DDK antibody (Cat# [TA50011-100]). Left: Cell lysates from untransfected HEK293T cells; Right: Cell lysates from HEK293T cells transfected with RC207803 using transfection reagent MegaTran 2.0 (Cat# [TT210002]).