

## Product datasheet for RC207802

### CEBPE (NM\_001805) Human Tagged ORF Clone

#### Product data:

Product Type:	Expression Plasmids
Product Name:	CEBPE (NM_001805) Human Tagged ORF Clone
Tag:	Myc-DDK
Symbol:	CEBPE
Synonyms:	C/EBP-epsilon; c/EBP epsilon; CRP1
Mammalian Cell Selection:	Neomycin
Vector:	pCMV6-Entry (PS100001)
E. coli Selection:	Kanamycin (25 ug/mL)
ORF Nucleotide Sequence:	>RC207802 ORF sequence Red=Cloning site Blue=ORF Green=Tags(s)

TTTTGTAATACGACTCACTATAGGGCGGCCGGAATTCGTCGACTGGATCCGGTACCGAGGAGATCTGCC  
GCC**CGATCGCC**

ATGTCCACGGGACCTACTACGAGTGTGAGCCCCGGGGTGGCCAGCAGCCACTCGAGTTCTCAGGGGGCC  
GAGCTGGGCCCGGGGAGCTAGGGGACATGTGTGAGCATGAGGCCTCCATTGACCTCTCCGCCTACATCGA  
GTCTGGGAAGAGCAGCTTCTCTCCGATCTCTTGCCGTGAAGCCAGCGCCTGAGGCCAGAGGCCTCAAG  
GGCCCCGAACCCCTGCCTTCCCCACTACTTGCCGCCTGACCCCTGGCCCTTTGCCTACCCTCCACATA  
CCTTCGGCCAGACAGGAAGGCCTGGGGCCTGGCATCTACAGCAGCCCAGGGAGCTACGACCCAGGGC  
TGTGGCGGTGAAGGAGGAGCCCCGGGGCCAGAGGGCAGCCGAGCTGCCAGCCGAGGCAGCTACAATCCC  
CTGCAGTACCAAGTGGCACACTGTGGGCAGACAGCCATGCACCTGCCCCAACTCTGGCAGCACCCGGCC  
AGCCTCTGCGCGTTCTCAAGGCCCTTTGGCCACTGCCGCACCCCTGCAGTCCCTCCTGAAGGCGCC  
CTCCCCGGCTGGCCCTTACACAAGGGCAAGAAGGCAGTGAACAAAGATAGCCTTGAGTACCGGCTGAGG  
CGGGAGCGCAACAACATCGCCGTGCGCAAGAGCCGAGACAAGGCCAAGAGGCGCATTCTGGAGACGCAGC  
AGAAGGTGCTGGAGTACATGGCAGAGAACGAGCGCCTCCGAGCCGCGTGGAGCAGCTCACCCAGGAGCT  
AGACACCTCCGCAACCTCTTCCGCCAGATTCTGAGGCGGCCAACCTCATCAAGGGCGTGGGGGTTGC  
AGC

**ACGCGT**ACGCGGCCGCTCGAGCAGAACTCATCTCAGAAGAGGATCTGGCAGCAAATGATATCCTGGATT  
ACAAGGATGACGACGATAAGGTTTAA



[View online »](#)

**Protein Sequence:** >RC207802 protein sequence  
 Red=Cloning site Green=Tags(s)

MSHGTYECEPRGGQQPLEFSGGRAGPGELGDMCEHEASIDL SAYIESGEEQLLSDLFAVKPAPEARGLK  
 GPGTAPFPHYLPDPRPFAYPPHTFGPDRKALGPGIYSSPGSYDPRAVAVKEEPRGPEGSRAASRGSYNP  
 LQYQVAHCQTAMHLPPTLAAPGQPLRVLKAPLATAAPPCSPLLKAPSPAGPLHKGKAVNKDSLEYRLR  
 RERNNI AVRKSRDKAKRRILETQQKVLEYMAENERLRSRVEQLTQELDTLRNLF RQIPEAANLIKGVGGC  
 S

TRTRPLEQKLISEEDLAANDILDYKDDDDKV

**Chromatograms:** [https://cdn.origene.com/chromatograms/mk6088\\_b01.zip](https://cdn.origene.com/chromatograms/mk6088_b01.zip)

**Restriction Sites:** SgfI-MluI

**Cloning Scheme:**



**ACCN:** NM\_001805

**ORF Size:** 843 bp

**OTI Disclaimer:** The molecular sequence of this clone aligns with the gene accession number as a point of reference only. However, individual transcript sequences of the same gene can differ through naturally occurring variations (e.g. polymorphisms), each with its own valid existence. This clone is substantially in agreement with the reference, but a complete review of all prevailing variants is recommended prior to use. [More info](#)

**OTI Annotation:** This clone was engineered to express the complete ORF with an expression tag. Expression varies depending on the nature of the gene.

**Components:** The ORF clone is ion-exchange column purified and shipped in a 2D barcoded Matrix tube containing 10ug of transfection-ready, dried plasmid DNA (reconstitute with 100 ul of water).

**Reconstitution Method:**

1. Centrifuge at 5,000xg for 5min.
2. Carefully open the tube and add 100ul of sterile water to dissolve the DNA.
3. Close the tube and incubate for 10 minutes at room temperature.
4. Briefly vortex the tube and then do a quick spin (less than 5000xg) to concentrate the liquid at the bottom.
5. Store the suspended plasmid at -20°C. The DNA is stable for at least one year from date of shipping when stored at -20°C.

**RefSeq:** [NM\\_001805.4](#)

**RefSeq Size:** 1550 bp

**RefSeq ORF:** 846 bp

**Locus ID:** 1053

**UniProt ID:** [Q15744](#)

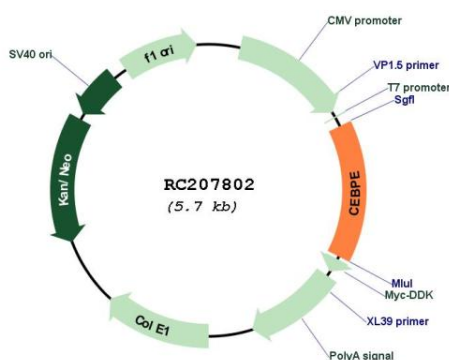
**Cytogenetics:** 14q11.2

**Protein Families:** Druggable Genome, Transcription Factors

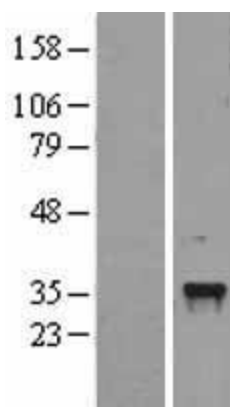
**MW:** 30.6 kDa

**Gene Summary:** The protein encoded by this gene is a bZIP transcription factor which can bind as a homodimer to certain DNA regulatory regions. It can also form heterodimers with the related protein CEBP-delta. The encoded protein may be essential for terminal differentiation and functional maturation of committed granulocyte progenitor cells. Mutations in this gene have been associated with Specific Granule Deficiency, a rare congenital disorder. Multiple variants of this gene have been described, but the full-length nature of only one has been determined. [provided by RefSeq, Jul 2008]

## Product images:



Circular map for RC207802



Western blot validation of overexpression lysate (Cat# [LY400685]) using anti-DDK antibody (Cat# [TA50011-100]). Left: Cell lysates from untransfected HEK293T cells; Right: Cell lysates from HEK293T cells transfected with RC207802 using transfection reagent MegaTran 2.0 (Cat# [TT210002]).