

Product datasheet for RC207801

CILP (NM_003613) Human Tagged ORF Clone

Product data:

Product Type:	Expression Plasmids
Product Name:	CILP (NM_003613) Human Tagged ORF Clone
Tag:	Myc-DDK
Symbol:	CILP
Synonyms:	CILP-1; HsT18872
Mammalian Cell Selection:	Neomycin
Vector:	pCMV6-Entry (PS100001)
E. coli Selection:	Kanamycin (25 ug/mL)
ORF Nucleotide Sequence:	>RC207801 ORF sequence Red=Cloning site Blue=ORF Green=Tags(s)

TTTTGTAATACGACTCACTATAGGGCGGCCGGAATTCGTCGACTGGATCCGGTACCGAGGAGATCTGCC
GCC**CGATCGCC**

ATGGTGGGACCAAGGCCTGGGTGTTCTCCTTCTGGTCTGGAAGTCACATCTGTGTTGGGAGACAGA
CGATGCTACCCAGTCAGTAAGAAGAGTCCAGCCTGGGAAGAAGAAGCCAGCATCTTTGCCAAGCCTGC
CGACACCTGGAGAGCCCTGGTGGTGGACAACATGGTTCAACATCGACTACCCAGGCGGAAGGGCGAC
TATGAGCGGCTGGACGCCATTTCGCTTCTACTATGGGGACCGTGTATGTGCCCGTCCCTGCGGCTAGAGG
CTCGGACCACTGACTGGACACCTGCGGGCAGCACTGGCCAGGTGGTCCATGGTAGTCCCGTGGGGTTT
CTGGTGCCTCAACAGGGAGCAGCGGCCTGGCCAGAAGTCTAATTACACCGTACGCTTCTCTGCCCA
CCAGGATCCCTGCGCCGAGACACAGAGCGCATCTGGAGCCCATGGTCTCCCTGGAGCAAGTGCTCAGCTG
CCTGTGGTCCAGACTGGGGTCCAGACTCGCACACGCATTTGCTTGGCAGAGATGGTGTGCTGTGCACTGA
GGCCAGCGAAGAGGGTCCAGCACTGCATGGGCCAGGACTGTACAGCCTGTGACCTGACCTGCCAATGGGC
CAGGTGAATGCTGACTGTGATGCCTGCATGTGCCAGGACTTCATGCTTCATGGGGCTGTCTCCCTCCCG
GAGGTGCCCGAGCCTCAGGGGCTGCTATCTACCTCCTGACCAAGACGCCGAAGCTGCTGACCCAGACAGA
CAGTGTGGGAGATCCGAATCCCTGGCTTGTGCCCTGATGGCAAAGCATCCTGAAGATCACAAGGTC
AAGTTTGGCCCCATTGTACTACAATGCCAAGACTAGCCTGAAGGCAGCCACCATCAAGGCAGAGTTTG
TGAGGGCAGAGACTCCATACATGGTGTGTAACCTGAGACAAAAGCACGGAGAGCTGGGCAGAGCGTGTG
TCTGTGCTGTAAGGCCACAGGGAAGCCAGGCCAGACAAGTATTTTTGGTATCATAATGACACATTGCTG
GATCCTTCCCTCTACAAGCATGAGAGCAAGCTGGTGTGAGGAACTGCAGCAGCACCAGGCTGGGGAGT
ACTTTTGAAGGCCAGAGTGTGCTGGGGCTGTGAAGTCCAAGTTGCCAGCTGATTGTCATAGCATC
TGATGAGACTCCTTGCAACCCAGTTCTGAGAGCTATCTTATCCGGCTGCCCATGATTGCTTTCAGAA
GCCACCAACTCCTTCTACTATGACGTGGGACGCTGCCCTGTTAAGACTTGTGCAGGGCAGCAGGATAATG
GGATCAGGTGCCGTGATGCTGTGCAGAAGTGTGTGCCATCTCCAAGACAGAGGAAAGGGAGATCCAGTG
CAGTGGCTACACGCTACCCACCAAGGTGGCCAAGGAGTGCAGCTGCCAGCGGTGTACGGAACTCGGAGC



ATCGTGCGGGGCCGTGTCAAGTGTGCTGACAATGGGGAGCCCATGCGCTTTGGCCATGTGTACATGGGGA
ACAGCCGTGTAAGCATGACTGGCTACAAGGGCACTTTCACCTCCATGTCCCCCAGGACACTGAGAGGCT
GGTGCTCACATTTGTGGACAGGCTGCAGAAGTTTGTCAACACCACCAAAGTGCTACCTTTCAACAAGAAG
GGGAGTGCCGTGTTCCATGAAATCAAGATGCTTCGTGCGAAAGAGCCCATCACTTTGGAAGCCATGGAGA
CCAACATCATCCCCCTGGGGGAAGTGGTTGGTGAAGACCCCATGGCTGAAGTGGAGATCCATCCAGGAG
TTTCTACAGGCAGAATGGGGAGCCCTACATAGGAAAAGTGAAGGCCAGTGTGACCTTCTCGATCCCCGG
AATATTTCCACAGCCACAGCTGCCAGACTGACCTGAACCTCATCAATGACGAAGGAGACACTTTCCCCC
TTCGGACGTATGGCATGTTCTCTGTGGACTTCAGAGATGAGGTCACCTCAGAGCCACTTAATGCTGGCAA
AGTGAAGGTCCACCTTGACTCGACCCAGGTCAAGATGCCAGAGCAGATATCCACAGTAAAACCTGGTCA
CTCAATCCAGACACAGGGCTGTGGGAGGAGGAAGGTGATTTCAAATTTGAAAATCAAAGGAGGAACAAAA
GAGAAGACAGAACCTTCTGGTGGGCAACCTGGAGATTCTGTGAGAGGAGGCTCTTTAACCTGGATGTTCC
TGAAAGCAGGCGGTGCTTTGTTAAGGTGAGGGCCTACCGAGTGAGAGGTTCTTGCTAGTGAGCAGATC
CAGGGGTTGTGATCTCCGTGATTAACCTGGAGCCTAGAAGTGGCTTCTGTCCAACCTAGGGCCTGGG
GCCGCTTGACAGTGTATCACAGGCCCAACGGGGCCTGTGTGCTGCCTTCTGTGATGACCAGTCCCC
TGATGCCTACTCTGCCTATGCTTGGCAAGCCTGGCTGGGGAGGAACTGCAAGCAGTGGAGTCTTCTCCT
AAATTCACCCAAATGCAATTGGCGTCCCTCAGCCCTATCTCAACAAGCTCAACTACCGTCGGACCGACC
ATGAGGATCCACGGGTTAAAAAGACAGCTTCCAGATTAGCATGGCCAAGCCAAGGCCAACTCAGCTGA
GGAGAGCAATGGGCCATCTATGCCTTTGAGAACCTCCGGGCATGTGAAGAGGCACCACCCAGTGCAGCC
CACTTCCGTTTCTACCAGATTGAGGGGGATCGATGACTACAACACAGTCCCCTTCAACGAAGATGACC
CTATGAGCTGGACTGAAGACTATCTGGCATGGTGGCCAAAGCCGATGGAATTCAGGGCCTGCTATATCAA
GGTGAAGATTGTGGGGCACTGGAAGTGAATGTGCGATCCCGCAACATGGGGGCACTCATCGGCGGACA
GTGGGGAAGCTGTATGGAATCCGAGATGTGAGGAGCACTCGGGACAGGGACCAGCCCAATGTCTCAGCTG
CCTGTCTGGAGTTCAAGTGCAGTGGGATGCTCTATGATCAGGACCGTGTGGACCGCACCCCTGGTGAAGGT
CATCCCCCAGGGCAGCTGCCGTGAGCCAGTGTGAACCCATGCTGCATGAGTACCTGGTCAACCACTTG
CCACTTGCAAGTCAACAACGACACCAAGTGTGATACCCATGCTGGCACCCCTTGGACCACTGGGCCACA
ATGGCATCTACACTGTCAGTACCAGGACCCTCGCACGGCCAAGGAGATCGCGCTCGGCCGTGCTTTGA
TGGCACATCCGATGGCTCCTCCAGAATCATGAAGAGCAATGTGGGAGTAGCCCTCACCTTCAACTGTGTA
GAGAGGCAAGTAGGCCGCCAGAGTGCCTTCCAGTACCTCAAAGCACCCAGCCAGTCCCCTGCTGCAG
GCACTGTCCAAGGAAGAGTGCCTCGAGGAGGCAGCAGCGAGCAGGGGTGGCCAGCGCCAGAGTGG
AGTGGTGGCCTCTGAGATTTCTAGAGTTGCTCAACAGCCCCTGATCAAC

ACGCGTACGCGGCCGCTCGAGCAGAACTCATCTCAGAAGAGGATCTGGCAGCAAATGATATCCTGGATT
ACAAGGATGACGACGATAAGGTTTAA

Protein Sequence:

>RC207801 protein sequence
 Red=Cloning site Green=Tags(s)

MVGTKAWVFSFLVLEVTSVLGRQTMLTQSVRRVQPGKKNPSIFAKPADTLESPGEWTTWFNIDYPGGKGD
 YERLDAIRFYGDRVCARPLRLEARTTDWTPAGSTGQVVHGSPEGFWCLNREQRPGQNCNSNYTVRFLCP
 PGSRRDTERIWSWPSPWSKCSAACGQTGVQTRTRICLAEMVSLCSEASEEGQHCMGQDCTACDLTCPMG
 QVNADCACMCQDFMLHGAVSLPGGAPASGAIIYLLTKTPKLLTQTDSDGRFRIPGLCPDGKSILKITKV
 KFAPIVLTMPKTSLKAATIKAEFVRAETPYMVMNPETKARRAGQSVSLCCKATGKPRPKYFWYHNDTLL
 DPSLYKHESKLVLRKLQQHQAGEYFCKAQSDAGAVKSKVAQLIIVIASDETPCNPVPESYLIRLPHDCFQN
 ATNSFYDVGRCVPKTCAGQQDNGIRCRDAVQCCGISKTEEREIQCSGYLPTKVAKECSCQRCTETRS
 IVRGRVSAADNGEPMRF GHVYMGNSRVSM TGKGTFTLHVPQDTERLVLTFVDRLQKFVNTTKVLPFNKK
 GSAVFHEIKMLRRKEPITLEAMETNIIP LGEVVGEDPMAELEIPSRSFYRQNGEPIYGKVKASVTFDPR
 NISTATAAQTDLNFINDEGDTFPLRTYGMFSVDFRDEV TSEPLNAGKVKVHLDSTQVKMPEHISTVKLWS
 LNPDTGLWEEEGDFKFENQRNKRDR TFLVGNLEIRERRLFNLDVPESRRCFVKV RAYR SERFLPSEQI
 QGVVISVINLEPRTGFLSNPRAWGRFDSVITGPN GACVPAFCDDQSPDAYSAYVLASLAGEELQAVESSP
 KFNPNAI GVPQPYLNKLNRYRRTDHE DPRVKKTA FQISMAKPRPNSAEESNGPIYAFENLRACEEAPPSAA
 HFRFYQIEGDRYDNTVPFNEDDPMSWTE DYLAWWPKPMEFRACYIKVKI VGPLEVNVRSRNMGGTHRRT
 VGKLYGIRDVRSTRDRDQPNVSAACLEFKCSGMLYDQDRVDR TLVKVIPQGSRRASVNPMLHEYL VNH
 LPLAVNNDTSEYTMLAPLDPLGHNYGIYTVTDQDPRTAKEIALGRCFDGTSDGSSRIMKSNV GVALTFNCV
 ERQVGRQSAFYLQSTPAQSPAAGTVQGRVPSRRQRASRGGQRQSGVVASLRFPRVAQQPLIN

TRTRPLEQKLISEEDLAANDILDYKDDDDKV

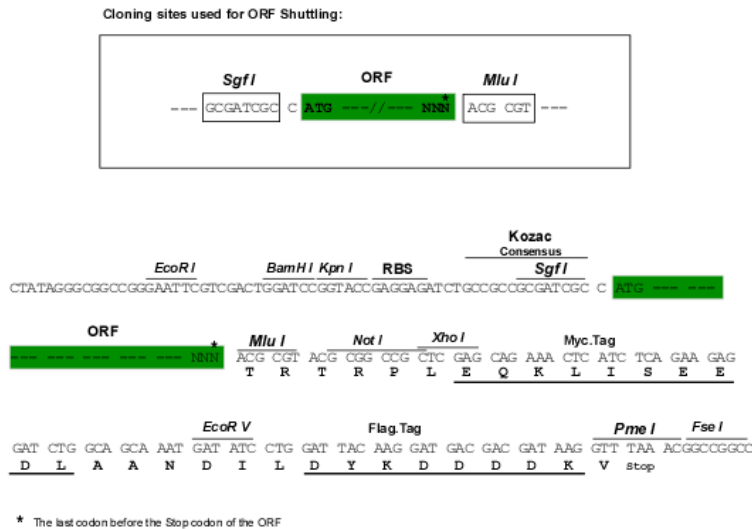
Chromatograms:

https://cdn.origene.com/chromatograms/mk6261_h01.zip

Restriction Sites:

SgfI-MluI

Cloning Scheme:



ACCN:

NM_003613

ORF Size:

3552 bp

OTI Disclaimer: Due to the inherent nature of this plasmid, standard methods to replicate additional amounts of DNA in E. coli are highly likely to result in mutations and/or rearrangements. Therefore, OriGene does not guarantee the capability to replicate this plasmid DNA. Additional amounts of DNA can be purchased from OriGene with batch-specific, full-sequence verification at a reduced cost. Please contact our customer care team at custsupport@origene.com or by calling 301.340.3188 option 3 for pricing and delivery.

The molecular sequence of this clone aligns with the gene accession number as a point of reference only. However, individual transcript sequences of the same gene can differ through naturally occurring variations (e.g. polymorphisms), each with its own valid existence. This clone is substantially in agreement with the reference, but a complete review of all prevailing variants is recommended prior to use. [More info](#)

OTI Annotation: This clone was engineered to express the complete ORF with an expression tag. Expression varies depending on the nature of the gene.

Components: The ORF clone is ion-exchange column purified and shipped in a 2D barcoded Matrix tube containing 10ug of transfection-ready, dried plasmid DNA (reconstitute with 100 ul of water).

Reconstitution Method:

1. Centrifuge at 5,000xg for 5min.
2. Carefully open the tube and add 100ul of sterile water to dissolve the DNA.
3. Close the tube and incubate for 10 minutes at room temperature.
4. Briefly vortex the tube and then do a quick spin (less than 5000xg) to concentrate the liquid at the bottom.
5. Store the suspended plasmid at -20°C. The DNA is stable for at least one year from date of shipping when stored at -20°C.

RefSeq: [NM_003613.4](#)

RefSeq Size: 4484 bp

RefSeq ORF: 3555 bp

Locus ID: 8483

UniProt ID: [O75339](#)

Cytogenetics: 15q22.31

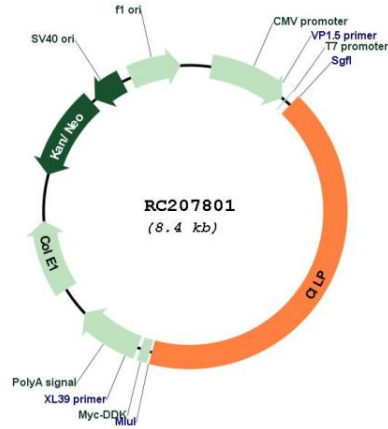
Domains: tsp_1, ig, IGc2, IG

Protein Families: Druggable Genome, Phosphatase, Secreted Protein

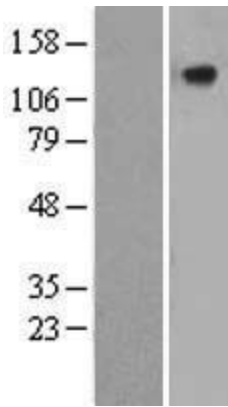
MW: 132.6 kDa

Gene Summary:

Major alterations in the composition of the cartilage extracellular matrix occur in joint disease, such as osteoarthritis. This gene encodes the cartilage intermediate layer protein (CILP), which increases in early osteoarthritis cartilage. The encoded protein was thought to encode a protein precursor for two different proteins; an N-terminal CILP and a C-terminal homolog of NTPPHase, however, later studies identified no nucleotide pyrophosphatase phosphodiesterase (NPP) activity. The full-length and the N-terminal domain of this protein was shown to function as an IGF-1 antagonist. An allelic variant of this gene has been associated with lumbar disc disease. [provided by RefSeq, Sep 2010]

Product images:


Circular map for RC207801



Western blot validation of overexpression lysate (Cat# [LY418544]) using anti-DDK antibody (Cat# [TA50011-100]). Left: Cell lysates from untransfected HEK293T cells; Right: Cell lysates from HEK293T cells transfected with RC207801 using transfection reagent MegaTran 2.0 (Cat# [TT210002]).