

Product datasheet for **RC207794**

CXCR2 (NM_001557) Human Tagged ORF Clone

Product data:

Product Type:	Expression Plasmids
Product Name:	CXCR2 (NM_001557) Human Tagged ORF Clone
Tag:	Myc-DDK
Symbol:	CXCR2
Synonyms:	CD182; CDw128b; CMKAR2; IL8R2; IL8RA; IL8RB
Mammalian Cell Selection:	Neomycin
Vector:	pCMV6-Entry (PS100001)
E. coli Selection:	Kanamycin (25 ug/mL)
ORF Nucleotide Sequence:	>RC207794 ORF sequence Red=Cloning site Blue=ORF Green=Tags(s)

TTTTGTAATACGACTCACTATAGGGCGGCCGGAATTCGTCGACTGGATCCGGTACCGAGGAGATCTGCC
GCC**CGATCGCC**

ATGGAAGATTTTAAACATGGAGAGTGACAGCTTTGAAGATTTCTGAAAGGTGAAGATCTTAGTAATTACA
GTTACAGCTCTACCCTGCCCCCTTTCTACTAGATGCCGCCCATGTGAACCAGAATCCCTGGAAATCAA
CAAGTATTTTGTGGTCATTATCTATGCCCTGGTATTCCTGCTGAGCCTGCTGGGAACTCCCTCGTGATG
CTGGTCATCTTATACAGCAGGGTCGGCCGCTCCGTCACCTGATGTCTACCTGCTGAACCTAGCCTTGCCG
ACCTACTCTTTGCCCTGACCTTGCCCATCTGGCCGCTCCAAGTGAATGGCTGGATTTTGGCACATT
CCTGTGCAAGGTGGTCTCACTCCTGAAGGAAGTCAACTTCTATAGTGGCATCCTGCTACTGGCCTGCATC
AGTGTGGACCGTTACCTGGCCATTGTCCATGCCACACGCACACTGACCCAGAAGCGCTACTTGGTCAAAT
TCATATGTCTCAGCATCTGGGGTCTGTCCCTTGCTCCTGGCCCTGCCTGTCTACTTTCCGAAGGACCGT
CTACTCATCCAATGTTAGCCCAGCCTGCTATGAGGACATGGGCAACAATACAGCAAATGGCGGATGCTG
TTACGGATCCTGCCCCAGTCCTTTGGCTTCATCGTGCCACTGCTGATCATGCTGTTCTGTACGGATTCA
CCCTGCGTACGCTGTTTAAAGCCACATGGGGCAGAAGCACCGGGCCATGCGGGTCATCTTTGCTGTCGT
CCTCATCTTCTGCTCTGCTGGCTGCCCTACAACCTGGTCTGCTGCGCAGACACCCTCATGAGGACCCAG
GTGATCCAGGAGACCTGTGAGCGCCGAATCACATCGACCGGGCTCTGGATGCCACCGAGATTCTGGGCA
TCCTTCACAGCTGCCTCAACCCCTCATCTACGCCTTCATTGGCCAGAAGTTTCGCCATGGACTCCCTCAA
GATTCTAGCTATACATGGCTTGATCAGCAAGGACTCCCTGCCAAAGACAGCAGGCTTCCTTTGTTGGC
TCTTCTCAGGGCACACTTCCACTACTCTC

ACGCGTACGCGGCCGCTCGAGCAGAAACTCATCTCAGAAGAGGATCTGGCAGCAAATGATATCCTGGATT
ACAAGGATGACGACGATAAGGTTTAA



[View online »](#)

Protein Sequence: >RC207794 protein sequence
Red=Cloning site Green=Tags(s)

MEDFNMESDSFEDFWKGEDLSNYSYSSTLPPFLDAAPEPESEINKYFVVIIYALVFLLSLLGNLVM
LVILYSRVGRSVTDVYLLNLALADLLFALTLPIWAASKVNGWIFGTFLCKVVSLLKEVNFYSGILLLACI
SVDRYLAIHVHATRTLTKRYLVKFIKLSIWGLSLLLALPVLLFRRTVYSSNVSPACYEDMGNTANWRML
LRILPQSFQFIVPLLLIMLFCYGFTRLRTLKFAHMGQKHRAMRVIFAVVLIIFLLCWLPYNLVLLADTLMRTQ
VIQETCERRNHIDRALDATEILGILHSLNPLIYAFIQKFRHGLLKILAIHGLISKDSLPKDSRPSFVG
SSSGHTSTTL

TRTRPLEQKLISEEDLAANDILDYKDDDDKV

Chromatograms: https://cdn.origene.com/chromatograms/mk6136_a01.zip

Restriction Sites: SgfI-MluI

Cloning Scheme:



* The last codon before the Stop codon of the ORF

ACCN: NM_001557

ORF Size: 1080 bp

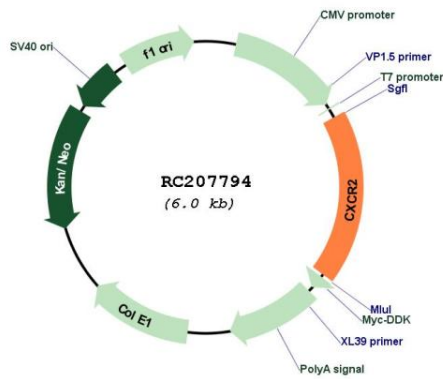
OTI Disclaimer: The molecular sequence of this clone aligns with the gene accession number as a point of reference only. However, individual transcript sequences of the same gene can differ through naturally occurring variations (e.g. polymorphisms), each with its own valid existence. This clone is substantially in agreement with the reference, but a complete review of all prevailing variants is recommended prior to use. [More info](#)

OTI Annotation: This clone was engineered to express the complete ORF with an expression tag. Expression varies depending on the nature of the gene.

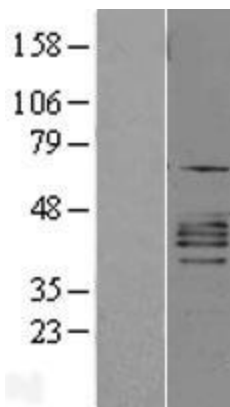
Components: The ORF clone is ion-exchange column purified and shipped in a 2D barcoded Matrix tube containing 10ug of transfection-ready, dried plasmid DNA (reconstitute with 100 ul of water).

Reconstitution Method:	<ol style="list-style-type: none">1. Centrifuge at 5,000xg for 5min.2. Carefully open the tube and add 100ul of sterile water to dissolve the DNA.3. Close the tube and incubate for 10 minutes at room temperature.4. Briefly vortex the tube and then do a quick spin (less than 5000xg) to concentrate the liquid at the bottom.5. Store the suspended plasmid at -20°C. The DNA is stable for at least one year from date of shipping when stored at -20°C.
Note:	Plasmids are not sterile. For experiments where strict sterility is required, filtration with 0.22um filter is required.
RefSeq:	NM_001557.4
RefSeq Size:	2880 bp
RefSeq ORF:	1083 bp
Locus ID:	3579
UniProt ID:	P25025
Cytogenetics:	2q35
Domains:	7tm_1
Protein Families:	Druggable Genome, GPCR, Transmembrane
Protein Pathways:	Chemokine signaling pathway, Cytokine-cytokine receptor interaction, Endocytosis, Epithelial cell signaling in Helicobacter pylori infection
MW:	40.8 kDa
Gene Summary:	<p>The protein encoded by this gene is a member of the G-protein-coupled receptor family. This protein is a receptor for interleukin 8 (IL8). It binds to IL8 with high affinity, and transduces the signal through a G-protein activated second messenger system. This receptor also binds to chemokine (C-X-C motif) ligand 1 (CXCL1/MGSA), a protein with melanoma growth stimulating activity, and has been shown to be a major component required for serum-dependent melanoma cell growth. This receptor mediates neutrophil migration to sites of inflammation. The angiogenic effects of IL8 in intestinal microvascular endothelial cells are found to be mediated by this receptor. Knockout studies in mice suggested that this receptor controls the positioning of oligodendrocyte precursors in developing spinal cord by arresting their migration. This gene, IL8RA, a gene encoding another high affinity IL8 receptor, as well as IL8RBP, a pseudogene of IL8RB, form a gene cluster in a region mapped to chromosome 2q33-q36. Alternatively spliced variants, encoding the same protein, have been identified. [provided by RefSeq, Nov 2009]</p>

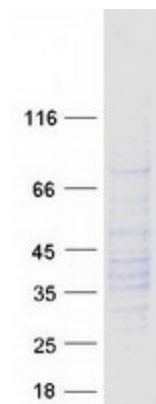
Product images:



Circular map for RC207794



Western blot validation of overexpression lysate (Cat# [LY400595]) using anti-DDK antibody (Cat# [TA50011-100]). Left: Cell lysates from untransfected HEK293T cells; Right: Cell lysates from HEK293T cells transfected with RC207794 using transfection reagent MegaTran 2.0 (Cat# [TT210002]).



Coomassie blue staining of purified CXCR2 protein (Cat# [TP307794]). The protein was produced from HEK293T cells transfected with CXCR2 cDNA clone (Cat# RC207794) using MegaTran 2.0 (Cat# [TT210002]).