

Product datasheet for **RC207786**

SCTR (NM_002980) Human Tagged ORF Clone

Product data:

Product Type:	Expression Plasmids
Product Name:	SCTR (NM_002980) Human Tagged ORF Clone
Tag:	Myc-DDK
Symbol:	SCTR
Synonyms:	SR
Mammalian Cell Selection:	Neomycin
Vector:	pCMV6-Entry (PS100001)
E. coli Selection:	Kanamycin (25 ug/mL)



[View online »](#)

ORF Nucleotide Sequence:

>RC207786 ORF sequence
 Red=Cloning site Blue=ORF Green=Tags(s)

TTTTGTAATACGACTCACTATAGGGCGGCCGGAATTCGTCGACTGGATCCGGTACCGAGGAGATCTGCC
 GCC**CGCATCGCC**

ATGCGTCCCCACCTGTCGCCCGCTGCAGCAGCTACTACTGCCGGTGTCTCGCCTGCGCCGCGCACT
 CGACTGGAGCCCTTCCCCGACTATGTGACGTGCTACAAGTGTGTGGGAAGAGCAAGACCAGTGCCTGCA
 GGAAGTCTCCAGAGAGCAGACAGGAGACCTGGGCACGGAGCAGCCAGTGCAGGTTGTGAGGGGATGTGG
 GACAACATAAGCTGCTGGCCCTTCTGTGCCGGCCGGATGGTGGAGGTGGAATGCCCGAGATTCTCC
 GGATGCTCACCAGCAGAAATGGTTCCTTGTCCGAACTGCACACAGGATGGCTGGTGCAGAACTTCCC
 CAGGCCTAATCTGGCCTGTGGCCTTAATGTGAACGACTCTCCAACGAGAAGCGGCCTCTACCTGCTG
 AAGCTGAAAGTACGTACACCGTGGGCTACAGCTCCTCCCTGGTATGCTCCTGGTGCCTTGGCATCC
 TCTGTGCTTCCGGAGGCTCCACTGCCTCGAACTACATCCACATGCACCTGTTCTGTCCTTCATCCT
 TCGTGCCTGTCCAATTCAAGGACCGGTCTTCTCCTCAGATGATGCACCTACTGCGATGCC
 CACAGGGCGGGCTGCAAGCTGATCATGGTGTGTCCAGTACTGCATCATGGCCAACTACTCCTGGCTGC
 TGGTGGAAAGCCTCTACCTTCACACACTCCTCGCCATCTCCTTCTCTGAAAGAAAGTACCTCCAGGG
 ATTTGTGGCATTTCGGATGGGGTTCTCCAGCCATTTTGTGCTTTGTGGGCTATTGCCAGACACTTCTG
 GAAGATGTTGGGTGCTGGGACATCAATGCCAACGCATCCATCTGGTGGATCATTTCGTGGTCTGTGATCC
 TCTCCATCCTGATTAATTCATCCTTTTCATAAACATTCTAAGAATCCTGATGAGAAAATTAGAACCCA
 AGAAAACAGAGGAAATGAAGTCAGCCATTATAAGCGCCTGGCCAGGTCCACTCTCCTGCTGATCCCCCTC
 TTTGGCATCCACTACATCGTCTTCGCCTTCTCCCAGAGGACGCTATGGAGATCCAGCTGTTTTTTGAAC
 TAGCCCTTGGCTCATTCCAGGGACTGGTGGTGGCCGCTCTACTGCTTCTCAACGGGGAGGTGCAGCT
 GGAGGTTTCAAGAAGTGGCAGCAATGGCACCTCCGTGAGTTCCCACTGCACCCGTTGGCCTCCTCAGC
 AACAGCACCAAGGCCAGCCACTTGGAGCAGAGCCAGGGCACCTGCAGGACCAGCATCATC

ACGCGTACGCGGCCGCTCGAGCAGAACTCATCTCAGAAGAGGATCTGGCAGCAAATGATATCCTGGATT
 ACAAGGATGACGACGATAAGGTTTAA

Protein Sequence:

>RC207786 protein sequence
 Red=Cloning site Green=Tags(s)

MRPHLSPPLQQLLPVLLACAAHSTGALPRLCDVLQVLWEEQDQCLQELSREQTGDLGTEQPVPGECEGMW
 DNI SCWPSSVPGRMVEVECPFLRMLTSRNGSLFRNCTQDGWSETFPRPNLACGVNVNDSSEKRRHSYLL
 KLKVMYTVGYSSSLVMLLVALGILCAFRR LHCTRNYIHMHLFVSFILRALSNFIKDAVLFSSDDVTYCDA
 HRAGCKLIMVLFQYICIMANYSWLLVEGLYLHTLLAISFFSERKYLQGFVAFGWGSPAIFVALWAIARHFL
 EDVGCWDINANASIWIIIRGPVILSILINFILFINILRILMRKLRTQETRGNEVSHYKRLARSTLLLIPL
 FGIHYIVFAFSPEDAMEIQLFFELALGSFQGLVVAVLYCFLNGEVQLEVQKKWQQWHLREFPLHPVASFS
 NSTKASHLEQSQGTCTRSII

TRTRPLEQKLISEEDLAANDILDYKDDDDKV

Chromatograms:

https://cdn.origene.com/chromatograms/mk6088_f04.zip

Restriction Sites:

SgfI-MluI

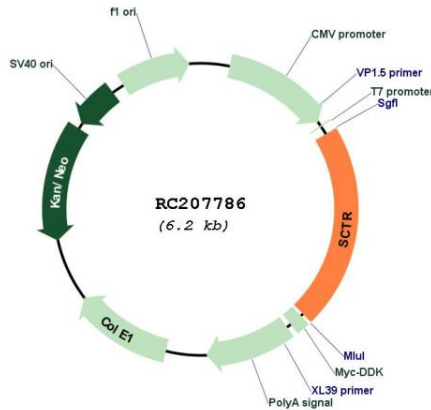
Protein Families: Druggable Genome, Transmembrane

Protein Pathways: Neuroactive ligand-receptor interaction

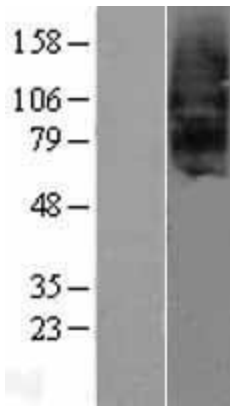
MW: 50.2 kDa

Gene Summary: The protein encoded by this gene is a G protein-coupled receptor and belongs to the glucagon-VIP-secretin receptor family. It binds secretin which is the most potent regulator of pancreatic bicarbonate, electrolyte and volume secretion. Secretin and its receptor are suggested to be involved in pancreatic cancer and autism. [provided by RefSeq, Jul 2008]

Product images:



Circular map for RC207786



Western blot validation of overexpression lysate (Cat# [LY418973]) using anti-DDK antibody (Cat# [TA50011-100]). Left: Cell lysates from untransfected HEK293T cells; Right: Cell lysates from HEK293T cells transfected with RC207786 using transfection reagent MegaTran 2.0 (Cat# [TT210002]).