

Product datasheet for **RC207785**

ENTPD2 (NM_203468) Human Tagged ORF Clone

Product data:

Product Type:	Expression Plasmids
Product Name:	ENTPD2 (NM_203468) Human Tagged ORF Clone
Tag:	Myc-DDK
Symbol:	ENTPD2
Synonyms:	CD39L1; NTPDase-2
Mammalian Cell Selection:	Neomycin
Vector:	pCMV6-Entry (PS100001)
E. coli Selection:	Kanamycin (25 ug/mL)



[View online »](#)

ORF Nucleotide Sequence:

>RC207785 ORF sequence
 Red=Cloning site Blue=ORF Green=Tags(s)

TTTTGTAATACGACTCACTATAGGGCGGCCGGAATTCGTCGACTGGATCCGGTACCGAGGAGATCTGCC
 GCC**CGGATCGCC**

ATGGCCGGAAGGTGCGGTCACTGCTGCCGCCGTGCTGTTGGCCGCCGGGCCTCGCCGGCTCTACT
 TGCTGTGCGTCCCACCCGCGACGTCCGGGAGCCGCCCGCCTCAAGTATGGCATCGTCCTGGACGCTGG
 TTCTTACACACGTCCATGTTTATCTACAAGTGGCCGGCAGACAAGGAGAACGACACAGGCATTGTGGGC
 CAGCACAGCTCCTGTGATGTTCCAGGTGGGGCATCTCCAGCTATGCAGACAACCCTTCTGGGGCCAGCC
 AGAGTCTTGTGGATGCCTCGAACAGGCCTTCAGGATGTGCCAAAGAGAGACACGCGGCACACCCCT
 CTACCTGGGAGCCACAGCGGTATGCGCCTGCTCAACCTGACCAATCCAGAGGCCTCGACCAGTGTGCTC
 ATGGCAGTGACTCACACTGACCCAGTACCCCTTTGACTTCCGGGTGCACGCATCCTCTCGGGCCAGG
 AAGAGGGGTGTTGGCTGGGTGACTGCCAACTACCTGCTGGAGAATTCATCAAGTACGGCTGGTGGG
 CCGGTGGTTCCGGCCACGAAGGGGACTGCGGGCCATGGACCTGGGGGTGCCTTACCCAGATCACT
 TTTGAGACAACCAAGTCCAGCTGAGGACAGAGCCAGCGAGGTCCAGCTGCATCTCTACGGCCAGCACTACC
 GAGTCTACACCCACAGCTTCTCTGCTATGGCCGTGACCAGTCTCCAGAGGCTGCTGGCCAGTGCCTT
 CCAGACCCACGGCTTCCACCCCTGCTGGCCGAGGGGCTTTCCACCCAAGTGTGCTCGGGGATGTGTAC
 CAGTCACCATGCACCATGGCCCAGCGGCCCAAACTTCAACAGCAGTGCAGGGTCCAGCTGTCCAGGGA
 GCAGTGACCCCACTCTGCCGAGATCTGGTTTCTGGGCTTTCAGTCTTCTCTCTGCCCTTCTCCCG
 ATGCTCTTTCAATGGGTCTTCCAGCCCCAGTGGCTGGGAATTTGTGCGCTTCTCTGCCTTCTTCTAC
 ACTGTGGACTTTTTCGGACTTCGATGGGCTGCCCGTGGCCACCCTGCAGCAGTGGAAAGCAGCCGCGAG
 TGAATGTCTGCAACCAGACTGGGCTCAGCTGCAAGCTCGGGTCCAGGGCAACGGGCCCGCTGGCCGA
 CTACTGCCCGGGGCCATGTTCTGTGACGAGCTGCTGAGTCGCGGCTACGGCTTCGACGAGCGCGCCTTC
 GCGCGCTGATCTCCAGAAGAAGGCCGCGGACTGCAGTGGGCTGGGCGCTCGCTACATGCTGAACC
 TGACCAACCTGATCCCGCCGACCCCGGGGCTGCGCAAGGGCACAGACTTCAGCTCCTGGGCTGCTCT
 CCTGCTGCTTTCGCTCCGCGCTCCTGGCTGCGCTTGTCTGCTGCTGCGTCAGGTGCACTCCGCCAAG
 CTGCCAAGCACCATC

ACGGTACGCGGCCGCTCGAGCAGAACTCATCTCAGAAGAGGATCTGGCAGCAATGATATCCTGGATT
ACAAGGATGACGACGATAAGGTTTAA

Protein Sequence:

>RC207785 protein sequence
 Red=Cloning site Green=Tags(s)

MAGKVRSLPLPLLLLAAAGLAGLLLLCVPTRDVREPPALKYGIIVLDAGSSHTSMFIYKWPADKENDTGIVG
 QHSSCDVPGGGISSYADNPSGASQSLVGCLEQALQDVPKERHAGTPLYLGATAGMRLNLNPEASTSVL
 MAVTHLTQYPPDFRGARILSGQEEGVFGWVTANYLLENFIKYGWVGRWFRPRKGLGAMDLGGASTQIT
 FETTSPAEDRASEVQLHLYGQHYRVYTHSFLCYGRDQVLQRLASALQTHGFHPCWPRGFSTQVLLGDVY
 QSPCTMAQRPNFNSSARVSLSGSSPHLCRDLVSGLFSFSSCPF SRCSFNGVFQPPVAGNFVAFSAFFY
 TVDFLRTSMGLPVATLQQLEAAAVNVCNQTTWAQLQARVPGQARLADYCAGAMFVQQLSRGYGDFERAF
 GGVIFQKKAADTAVGWALGYMLNLNLIPADPPGLRKGTDFSSWVLLLLFASALLAALVLLLRQVHSAK
 LPSTI

TRTRPLEQKLI SEEDLAANDILDYKDDDDKV

Chromatograms:

https://cdn.origene.com/chromatograms/mk6516_e08.zip

Restriction Sites:

Sgfl-Mlul

Cloning Scheme:


ACCN: NM_203468

ORF Size: 1485 bp

OTI Disclaimer: The molecular sequence of this clone aligns with the gene accession number as a point of reference only. However, individual transcript sequences of the same gene can differ through naturally occurring variations (e.g. polymorphisms), each with its own valid existence. This clone is substantially in agreement with the reference, but a complete review of all prevailing variants is recommended prior to use. [More info](#)

OTI Annotation: This clone was engineered to express the complete ORF with an expression tag. Expression varies depending on the nature of the gene.

Components: The ORF clone is ion-exchange column purified and shipped in a 2D barcoded Matrix tube containing 10ug of transfection-ready, dried plasmid DNA (reconstitute with 100 ul of water).

- Reconstitution Method:**
1. Centrifuge at 5,000xg for 5min.
 2. Carefully open the tube and add 100ul of sterile water to dissolve the DNA.
 3. Close the tube and incubate for 10 minutes at room temperature.
 4. Briefly vortex the tube and then do a quick spin (less than 5000xg) to concentrate the liquid at the bottom.
 5. Store the suspended plasmid at -20°C. The DNA is stable for at least one year from date of shipping when stored at -20°C.

RefSeq: [NM_203468.3](#)

RefSeq Size: 2156 bp

RefSeq ORF: 1488 bp

Locus ID: 954

UniProt ID: [Q9Y5L3](#)

Cytogenetics: 9q34.3

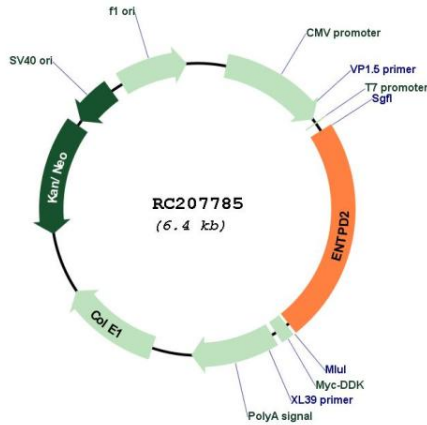
Protein Families: Transmembrane

Protein Pathways: Purine metabolism

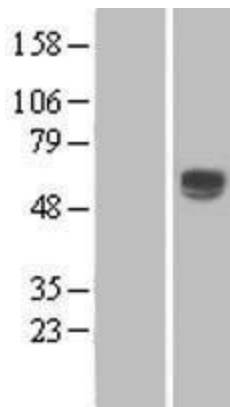
MW: 53.7 kDa

Gene Summary: The protein encoded by this gene is the type 2 enzyme of the ecto-nucleoside triphosphate diphosphohydrolase family (E-NTPDase). E-NTPDases are a family of ecto-nucleosidases that hydrolyze 5'-triphosphates. This ecto-ATPase is an integral membrane protein. Alternative splicing of this gene results in multiple transcript variants. [provided by RefSeq, Jul 2008]

Product images:



Circular map for RC207785



Western blot validation of overexpression lysate (Cat# [LY404281]) using anti-DDK antibody (Cat# [TA50011-100]). Left: Cell lysates from untransfected HEK293T cells; Right: Cell lysates from HEK293T cells transfected with RC207785 using transfection reagent MegaTran 2.0 (Cat# [TT210002]).