

Product datasheet for **RC207776**

PAFAH (PLA2G7) (NM_005084) Human Tagged ORF Clone

Product data:

Product Type:	Expression Plasmids
Product Name:	PAFAH (PLA2G7) (NM_005084) Human Tagged ORF Clone
Tag:	Myc-DDK
Symbol:	PAFAH
Synonyms:	LDL-PLA2; LP-PLA2; PAFAD; PAFAH
Mammalian Cell Selection:	Neomycin
Vector:	pCMV6-Entry (PS100001)
E. coli Selection:	Kanamycin (25 ug/mL)



[View online »](#)

ORF Nucleotide
Sequence:

>RC207776 ORF sequence
Red=Cloning site Blue=ORF Green=Tags(s)

TTTTGTAATACGACTCACTATAGGGCGGCCGGGAATTCGTCGACTGGATCCGGTACCGAGGAGATCTGCC
GCCGCGATCGCC

ATGGTGCCACCCAAATTGCATGTGCTTTTCTGCCTCTGCGGCTGCCTGGCTGTGGTTTATCCTTTTGACT
GGCAATACATAAATCCTGTTGCCATATGAAATCATCAGCATGGGTCAACAAAATACAAGTACTGATGGC
TGCTGCAAGCTTTGGCCAACTAAAATCCCCGGGAAATGGGCCTTATTCGGTTGTTGTACAGACTTA
ATGTTTGCATCACACTAATAAGGGCACCTTCTTGCCTTTATATTATCCATCCCAAGATAATGATCGCCTTG
ACACCCTTTGGATCCCAAATAAAGAATATTTTTGGGGTCTTAGCAAATTTCTTGGAAACACTGGCTTAT
GGGCAACATTTTGGAGTTACTCTTTGGTCAATGACAACCTCTGCAAACCTGGAATCCCCTCTGAGGCT
GGTAAAAATATCCACTTGTGTTTTTCTCATGGTCTTGGGCATTGAGGACACTTTATTCTGCTATTG
GCATTGACCTGGCATCTCATGGTTTATAGTTGCTGCTGTAGAACACAGAGATAGATCTGCATCTGCAAC
TACTATTTCAAGGACCAATCTGCTGCAGAAATAGGGGACAAGTCTTGGCTCTACCTTAGAACCCCTGAAA
CAAGAGGAGGAGACATATACGAAATGAGCAGGTACGGCAAAGAGCAAAGAATGTTCCCAAGCTCTCA
GTCTGATTCTTGACATTGATCATGGAAAGCCAGTGAAGAATGCATTAGATTTAAAGTTTGTATGGAAAC
ACTGAAGGACTCTATTGATAGGGAAAAATAGCAGTAATTGGACATTTCTTTGGTGGAGCAACGGTTATT
CAGACTCTTAGTGAAGATCAGAGATTGAGATGTGGTATTGCCCTGGATGCATGGATGTTCCACTGGGTG
ATGAAGTATATCCAGAATTCCTCAGCCCTCTTTTTATCAACTCTGAATTTTCCAATATCCTGCTAA
TATCATAAAAAATGAAAAATGCTACTCACCTGATAAAGAAAGAAAGATGATTACAATCAGGGGTTGAGTC
CACCAGAATTTGCTGACTTCACTTTTGAACCTGGCAAATAATTGGACACATGCTCAAATTAAGGGGAG
ACATAGATTCAAATGCAGCTATTGATCTTAGCAACAAAGCTTATTAGCATTCTTACAAAAGCATTTAGG
ACTTCATAAAGATTTTGTGATCAGTGGGACTGCTTGATTGAAGGAGATGATGAGAATCTTATCCAGGGACC
AACATTAACACAACCAATCAACACATCATGTTACAGAACTCTTCAGGAATAGAGAATAACAAT

ACGCGTACGCGCGCGCTCGAGCAGAAACTCATCTCAGAAGAGGATCTGGCAGCAATGATATCCTGGATT
ACAAGGATGACGACGATAAGGTTTAA

Protein Sequence:

>RC207776 protein sequence
Red=Cloning site Green=Tags(s)

MVPPKLHVLFCGLAVVYFPDWQYINPVAHMKSSAWVNKIQVLMAAASFGQTKIPRNGPYSVGCTDL
MFDHTNKGTFRLRYPSQDNDRLDTLWIPNKEYFWGLSKFLGTHWLMGNILRLLFGSMTPANWNSPLRP
GEKYPLVVFVSHGLGAFRTLYSAIGIDLASHGFIVAAVEHRDRSASATYYFKDQSAAEIGDKSWLYLRTLK
QEEETHIRNEQVRQRAKECSQALSLILDIDHGKPVKNALDLKFDMEQLKDSIDREKIAVIGHSFGGATVI
QTLSEDQRFRCGIALDAWMFPLGDEVYSRIPQPLFFINSEYFQYPANIIKMKKCYSPDKERKMITIRGSV
HQNFADFTFATGKIIIGHMLKLGKIDSNAAIDL SNKASLAF LQKHLGLHKDFDQWDCLIEGDENLIPGT
NINTTNQHIMLQNSSGIEKYN

TRTRPLEQKLI SEEDLAANDILDYKDDDDKV

Chromatograms:

https://cdn.origene.com/chromatograms/mk6087_a01.zip

Restriction Sites:

SgfI-MluI

Cloning Scheme:


ACCN: NM_005084

ORF Size: 1323 bp

OTI Disclaimer: The molecular sequence of this clone aligns with the gene accession number as a point of reference only. However, individual transcript sequences of the same gene can differ through naturally occurring variations (e.g. polymorphisms), each with its own valid existence. This clone is substantially in agreement with the reference, but a complete review of all prevailing variants is recommended prior to use. [More info](#)

OTI Annotation: This clone was engineered to express the complete ORF with an expression tag. Expression varies depending on the nature of the gene.

Components: The ORF clone is ion-exchange column purified and shipped in a 2D barcoded Matrix tube containing 10ug of transfection-ready, dried plasmid DNA (reconstitute with 100 ul of water).

Reconstitution Method:

1. Centrifuge at 5,000xg for 5min.
2. Carefully open the tube and add 100ul of sterile water to dissolve the DNA.
3. Close the tube and incubate for 10 minutes at room temperature.
4. Briefly vortex the tube and then do a quick spin (less than 5000xg) to concentrate the liquid at the bottom.
5. Store the suspended plasmid at -20°C. The DNA is stable for at least one year from date of shipping when stored at -20°C.

RefSeq: [NM_005084.2](#), [NP_005075.2](#)

RefSeq Size: 1880 bp

RefSeq ORF: 1326 bp

Locus ID: 7941

UniProt ID: [Q13093](#)

Cytogenetics: 6p12.3

Domains: PAF-AH_p_II

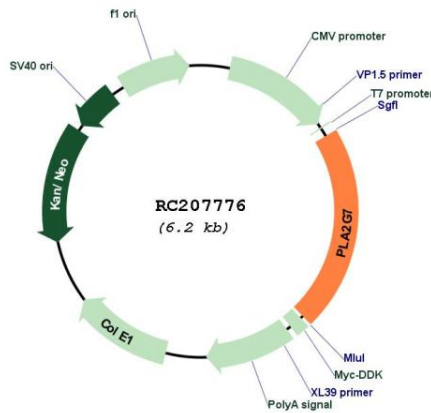
Protein Families: Druggable Genome, Secreted Protein

Protein Pathways: Ether lipid metabolism, Metabolic pathways

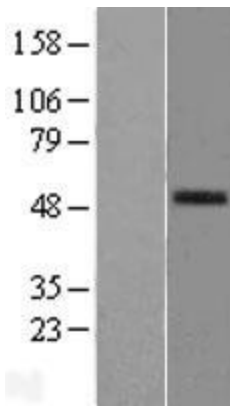
MW: 50 kDa

Gene Summary: The protein encoded by this gene is a secreted enzyme that catalyzes the degradation of platelet-activating factor to biologically inactive products. Defects in this gene are a cause of platelet-activating factor acetylhydrolase deficiency. Two transcript variants encoding the same protein have been found for this gene.[provided by RefSeq, Dec 2009]

Product images:



Circular map for RC207776



Western blot validation of overexpression lysate (Cat# [LY417533]) using anti-DDK antibody (Cat# [TA50011-100]). Left: Cell lysates from untransfected HEK293T cells; Right: Cell lysates from HEK293T cells transfected with RC207776 using transfection reagent MegaTran 2.0 (Cat# [TT210002]).