

Product datasheet for **RC207773**

CCDC6 (NM_005436) Human Tagged ORF Clone

Product data:

Product Type:	Expression Plasmids
Product Name:	CCDC6 (NM_005436) Human Tagged ORF Clone
Tag:	Myc-DDK
Symbol:	CCDC6
Synonyms:	D10S170; H4; PTC; TPC; TST1
Mammalian Cell Selection:	Neomycin
Vector:	pCMV6-Entry (PS100001)
E. coli Selection:	Kanamycin (25 ug/mL)



[View online »](#)

ORF Nucleotide Sequence:

>RC207773 representing NM_005436
 Red=Cloning site Blue=ORF Green=Tags(s)

TTTTGTAATACGACTCACTATAGGGCGGCCGGAATTCGTCGACTGGATCCGGTACCGAGGAGATCTGCC
 GCC**GCGATCGCC**

ATGGCGGACAGCGCCAGCGAGAGCGACACGGACGGGGCGGGGGCAACAGCAGCAGCTCGGCCGCCATGC
 AGTCGTCCTGCTCGTACCTCGGGCGGCGCGGTGGCGGCGGGGAGGCGGCGCGGTGGGAAGTCGGG
 GGGCATTGTCATCTCGCGTTCGCTGGAGGAGCTACCAACCGCTGGCTCGCTGCAGCAAGAGAAC
 AAGGTGCTGAAGATAGAGCTGGAGACTACAACTGAAGTGAAGGCACTGCAGGAGGAGAACCAGCAGC
 TGCGCAAAGCCAGCGTGACCATCAAGCCAGGGCTGAGCAGGAAGAAGAAATTCATTAGTAACACTTTATT
 CAAGAAAATTCAGGCTTTCAGAAAGGAGAAAGAAACCTTGCTGTAAATTATGAGAAAGAAGAATTC
 CTCATAATGAGCTCTCCAGAAAATGATGCAGTTGCAGCATGAGAAAGCCGAAC TAGAACAGCATCTTG
 AACAGAGCAGGAATTCAGGTCAACAACTGATGAAGAAAATAAAAACTGGAGAATGACACCATTTTC
 TAAGCAACTTACATTAGAACAGTTGAGACGGGAGAAGATTGACCTTGAAAATACATTGGAACAAGAACA
 GAAGCACTAGTTAATCGCCTCTGAAAAGGATGGATAAGCTTGAAGCTGAAAAGCGAATCCTGCAGAAA
 AATTAGACCAGCCGCTCTGCTCCACCATCGCCTAGAGATATCTCCATGGAGATTGATTCTCCAGAAA
 TATGATGCGTCACATCAGGTTTTAAAGAATGAAGTGAACGGCTGAAGAAGCAACTGAGAGCTGCTCAG
 TTACAGCATTGAGAGAAAATGGCACAGTATCTGGAGGAGGAACGTACATGAGAGAAGAGAAGTTGAGGC
 TCCAGAGGAAGCTGCAGAGGGAGATGGAGAGAAGAGAAGCCCTCTGTGACAGCTCTCCGAGAGTGAGTC
 CAGCTTAGAAATGGACGACGAAAGGTATTTAATGAGATGCTGCACAAGGATTAAGACCTCGCACTGTG
 TCCAGCCCGATCCCTTACACACCTTCTCCGAGTCAAGCAGGCCTATATCACCTGGTCTATCATATGCAA
 GTCACACGGTTGGTTTCACGCCACCAACTCACTGACTAGAGCTGGAATGTCTTATTACAATCCCGGG
 TCTTACAGTGCAGCACATGGGAACATCCCATGGTATCACAAGGCCTTACCACGGAGAAGCAACAGTCTT
 GACAAAATCAAACGCGCCACGCCCTCCATCTCCAACACACAGACCCAGTCCAGCCACTCCGCTC
 CACCTCCGCCACCCATGCAGCCACGGTCCCTCAGCAGCCACTCGCAGCCTACTCCTTCGCAACATTC
 GGCGCACCCCTCTCCAGCT

ACGCGTACGCGGCCGCTCGAGCAGAACTCATCTCAGAAGAGGATCTGGCAGCAATGATATCCTGGATT
 ACAAGGATGACGACGATAAGGTTTAA

Protein Sequence:

>RC207773 representing NM_005436
 Red=Cloning site Green=Tags(s)

MADSASESDTDGAGGNSSSSAAMQSSCSSTSGGGGGGGGGGGKSGGIVISPFRLLEELTNRLASLQEN
 KVLKIELETYKLCALQEENRDLRKASVTIQARAEQEEEFISNTLFKKIQALQKEKETLAVNYEKEEF
 LTNELSRKLMQLQHEKAELEQHLEQEQEFQVNLKMKKIKKLENDTISKQLTLEQLRREKIDLENTLEQEQ
 EALVNRLWKRMDKLEAEKRILQEKLDQVPSAPSPRDISMEIDSPENMMRHIFLKNEVERLKKQLRAAQ
 LQHSEKMAQYLEEERHMREENLRLQRKLQREMERREALCRQLSESESSLEMDDERYFNEMSAQGLRPRTV
 SSPIPYTPSPSSSRPISPLSYASHTVGFTPPTSLTRAGMSYNSPGLHVQHMGTSHGITRPSRRSNSP
 DKFKRPTPPSPNTQTPVQPPPPPPPPMQPTVPSAATSQPTPSQSAHPSSQP

TRTRPLEQKLISEEDLAANDILDYKDDDDKV

Chromatograms:

https://cdn.origene.com/chromatograms/mk8113_e01.zip

Restriction Sites:

Sgfl-Mlul

Cloning Scheme:


ACCN: NM_005436

ORF Size: 1422 bp

OTI Disclaimer: Due to the inherent nature of this plasmid, standard methods to replicate additional amounts of DNA in E. coli are highly likely to result in mutations and/or rearrangements. Therefore, OriGene does not guarantee the capability to replicate this plasmid DNA. Additional amounts of DNA can be purchased from OriGene with batch-specific, full-sequence verification at a reduced cost. Please contact our customer care team at custsupport@origene.com or by calling 301.340.3188 option 3 for pricing and delivery.

The molecular sequence of this clone aligns with the gene accession number as a point of reference only. However, individual transcript sequences of the same gene can differ through naturally occurring variations (e.g. polymorphisms), each with its own valid existence. This clone is substantially in agreement with the reference, but a complete review of all prevailing variants is recommended prior to use. [More info](#)

OTI Annotation: This clone was engineered to express the complete ORF with an expression tag. Expression varies depending on the nature of the gene.

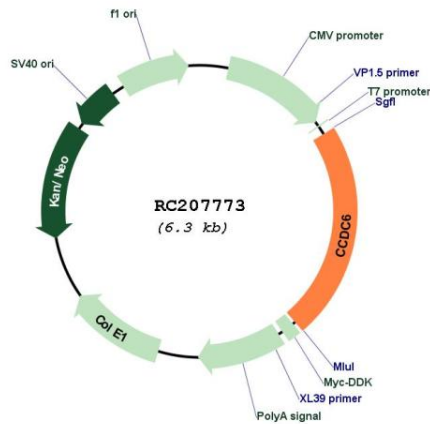
Components: The ORF clone is ion-exchange column purified and shipped in a 2D barcoded Matrix tube containing 10ug of transfection-ready, dried plasmid DNA (reconstitute with 100 ul of water).

- Reconstitution Method:**
1. Centrifuge at 5,000xg for 5min.
 2. Carefully open the tube and add 100ul of sterile water to dissolve the DNA.
 3. Close the tube and incubate for 10 minutes at room temperature.
 4. Briefly vortex the tube and then do a quick spin (less than 5000xg) to concentrate the liquid at the bottom.
 5. Store the suspended plasmid at -20°C. The DNA is stable for at least one year from date of shipping when stored at -20°C.

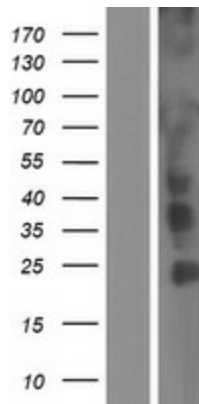
RefSeq: [NM_005436.5](#)
RefSeq Size: 5842 bp
RefSeq ORF: 1425 bp
Locus ID: 8030
UniProt ID: [Q16204](#)
Cytogenetics: 10q21.2
Protein Pathways: Pathways in cancer, Thyroid cancer
MW: 53.3 kDa

Gene Summary: This gene encodes a coiled-coil domain-containing protein. The encoded protein is ubiquitously expressed and may function as a tumor suppressor. A chromosomal rearrangement resulting in the expression of a fusion gene containing a portion of this gene and the intracellular kinase-encoding domain of the ret proto-oncogene is the cause of thyroid papillary carcinoma.[provided by RefSeq, Sep 2010]

Product images:



Circular map for RC207773



Western blot validation of overexpression lysate (Cat# [LY417306]) using anti-DDK antibody (Cat# [TA50011-100]). Left: Cell lysates from untransfected HEK293T cells; Right: Cell lysates from HEK293T cells transfected with RC207773 using transfection reagent MegaTran 2.0 (Cat# [TT210002]).