

Product datasheet for **RC207771**

TIE1 (NM_005424) Human Tagged ORF Clone

Product data:

Product Type:	Expression Plasmids
Product Name:	TIE1 (NM_005424) Human Tagged ORF Clone
Tag:	Myc-DDK
Symbol:	TIE1
Synonyms:	JTK14; LMPHM11; TIE
Mammalian Cell Selection:	Neomycin
Vector:	pCMV6-Entry (PS100001)
E. coli Selection:	Kanamycin (25 ug/mL)
ORF Nucleotide Sequence:	>RC207771 ORF sequence Red=Cloning site Blue=ORF Green=Tags(s)

TTTTGTAATACGACTCACTATAGGGCGGCCGGAATTCGTCGACTGGATCCGGTACCGAGGAGATCTGCCGCC**CGATCGCC**

ATGGTCTGGCGGGTGCCCCCTTTCTTGCTCCCCATCCTCTTCTGGCTTCTCATGTGGGCGCGGGTGG
ACCTGACGCTGCTGGCCAACTGCGGCTCACGGACCCCGAGCGTTCTTCTGACTTGCCTGTCTGGGA
GGCCGGGGCGGGAGGGGCTCGGACGCTGGGCGCCGCCCTGCTGCTGGAGAAGGACGACCGTATCGTG
CGCACCCCGCCGGGCCACCCCTGCGCCTGGCGCAACGGTTCGACACAGGTACGCTTCGCGGCTTCT
CCAAGCCCTCGGACCTCGTGGGCTCTTCTCCTGCGTGGGCGGTGCTGGGCGCGGCGCACGCGCTCAT
CTACGTGCACAACAGCCCTGGAGCCACCTGCTCCAGACAAGGTCACACACTGTGAACAAGGTGAC
ACCGCTGTACTTTCTGCACGTGTGCACAAGGAGAAGCAGACAGACGTGATCTGGAAGAGCAACGGATCCT
ACTTCTACACCCTGGACTGGCATGAAGCCAGGATGGGCGGTTCTGCTGCAGCTCCCAAATGTGCAGCC
ACCATCGAGCGGCATCTACAGTGCCACTTACCTGGAAGCCAGCCCTGGGCGAGCGCTTCTTTCGGCTC
ATCGTGCGGGTGTGGGGCTGGGCGTGGGGCCAGGCTGTACCAAGGAGTGCCAGGTTGCTACATG
GAGGTGTCTGCCACGACCATGACGGCGAATGTGTATGCCCCCTGGCTTCACTGGCACCCGCTGTGAACA
GGCCTGCAGAGAGGGCCGTTTTGGGCGAGGCTGCCAGGAGCAGTGCCAGGCATATCAGGCTGCCGGGC
CTCACCTTCTGCCTCCAGACCCCTATGGCTGCTTGTGGATCTGGCTGGAGAGGAAGCCAGTGCCAAG
AAGCTTGTGCCCTGGTCAATTTGGGGCTGATTGCCGACTCCAGTGCCAGTGTGAGAATGGTGGCACTTG
TGACCGGTTCAAGTGGTGTGTCTGCCCTCTGGGTGGCATGGAGTGCAGTGTGAGAAGTCAGACCGGATC
CCCCAGATCCTCAACATGGCCTCAGAACTGGAGTTCAACTAGAGACGATGCCCCGGATCAACTGTGCAG
CTGCAGGGAACCCCTTCCCCGTGCGGGGACGATAGAGCTACGCAAGCCAGACGGCACTGTGCTCCTGTC
CACCAAGGCCATTGTGGAGCCAGAGAAGACCACAGCTGAGTTCGAGGTGCCCGCTTGGTCTTGGCGAC
AGTGGTCTGGGAGTGCCGTGTGTCCACATCTGGCGCAAGACAGCCGGCGCTTCAAGGTCAATGTGA
AAGTGCCCCCGTCCCCCTGGCTGCACCTCGGCTCCTGACCAAGCAGAGCCGCGAGTTGTGGTCTCCCC
GCTGGTCTCGTCTCTGGGGATGGACCCATCTCCACTGTCGCGCTGCAGTACCGGCCAGGACAGTACC



ATGGACTGGTCGACCATTGTGGTGGACCCAGTGAGAACGTGACGTTAATGAACCTGAGGCCAAAGACAG
GATACAGTGTTCGTGTGCAGCTGAGCCGGCCAGGGGAAGGAGGAGGGGGCCTGGGGCCTCCCACCT
CATGACCACAGACTGTCTGAGCCTTTGTTGCAGCCGTGGTTGGAGGGCTGGCATGTGGAAGGCACTGAC
CGGCTGCGAGTGAGCTGGTCCTTGCCCTTGGTGCCCGGGCCACTGGTGGGCGACGGTTTCTGCTGCGCC
TGTGGGACGGGACACGGGGCAGGAGCGGGGAGAACGTCTATCCCCCAGGCCCGCACTGCCCTCCT
GACGGGACTCACGCCTGGCACCCACTACCAGCTGGATGTGCAGCTCTACCACTGCACCCTCCTGGGCCG
GCCTCGCCCCCTGCACACGTGCTTCTGCCCCAGTGGGCTCCAGCCCCGACACCTCCAGCCGAGG
CCCTCTCAGACTCCGAGATCCAGCTGACATGGAAGCACCCGGAGGCTCTGCCTGGGCAATATCCAAGTA
CGTTGTGGAGGTGCAGGTGGCTGGGGTGCAGGAGACCCACTGTGGATAGACGTGGACAGGCCTGAGGAG
ACAAGCACCATCATCCGTGGCCTCAACGCCAGCACGCGCTACCTCTCCGCATGCGGGCCAGCATTGAGG
GGCTCGGGGACTGGAGCAACACAGTAGAAGAGTCCACCCTGGGCAACGGGCTGCAGGCTGAGGGCCAGT
CCAAGAGAGCCGGGACGCTGAAGAGGGCTGGATCAGCAGCTGATCCTGGCGGTGGTGGGCTCCGTGTCT
GCCACCTGCCTCACCATCCTGGCCGCCCTTTAACCTGGTGTGCATCCGCAGAAGCTGCCTGCATCGGA
GACGCACCTTACCTACCAGTCAAGCTCGGGCAGGAGACCATCCTGCAGTTCAGCTCAGGGACCTTGAC
ACTTACCGGGCGCCAAAACCTGCAGCCGAGCCCTGAGCTACCCAGTGTAGAGTGGGAGGACATCACC
TTTGAGGACCTCATCGGGGAGGGGAACTTCGGCCAGGTGATCCGGGCCATGATCAAGAAGGACGGGCTGA
AGATGAACGCAGCCATCAAAATGCTGAAAGAGTATGCCTCTGAAAATGACCATCGTGACTTTGCGGGAGA
ACTGGAAGTTCTGTGCAAATGGGGCATCACCCCAACATCATCAACCTCCTGGGGCCTGTAAAGAACCGA
GGTTACTTGTATATCGCTATTGAATATGCCCCCTACGGGAACCTGCTAGATTTTCTGCGGAAAAGCCGGG
TCCTAGAGACTGACCCAGCTTTTGTCTGAGAGCATGGGACAGCCTCTACCCTTAGCTCCCGGACGCTGCT
GCGTTTCGCCAGTGATGCGGCAATGGCATGCAGTACCTGAGTGAGAAGCAGTTCATCCACAGGGACCTG
GCTGCCCGGAATGTGCTGGTCCGAGAGAACCTAGCCTCCAAGATTGCAGACTTCGGCCTTCTCGGGGAG
AGGAGGTTTATGTGAAGAAGACGATGGGGCCTCCTCCTGTGCGCTGGATGGCCATTGAGTCCCTGAACTA
CAGTGTCTATACCACCAAGAGTGATGTCTGGTCTTTGGAGTCTTCTTTGGGAGATAGTGAGCCTTGGA
GGTACACCCTACTGTGGCATGACCTGTGCCGAGCTCTATGAAAAGCTGCCCCAGGGCTACCGCATGGAGC
AGCCTCGAAACTGTGACGATGAAGTGTACGAGCTGATGCGTCAGTGTGCGGGACCGTCCCTATGAGCG
ACCCCCCTTTGCCAGATTGCGCTACAGCTAGGCCGCATGCTGGAAGCCAGGAAGGCCTATGTGAACATG
TCGCTGTTTGAGAACTTCACTTACGCGGGCATTGATGCCACAGCTGAGGAGGCC

ACGGTACGCGGCCGCTCGAGCAGAACTCATCTCAGAAGAGGATCTGGCAGCAATGATATCCTGGATT
ACAAGGATGACGACGATAAGGTTTAA

Protein Sequence: >RC207771 protein sequence
 Red=Cloning site Green=Tags(s)

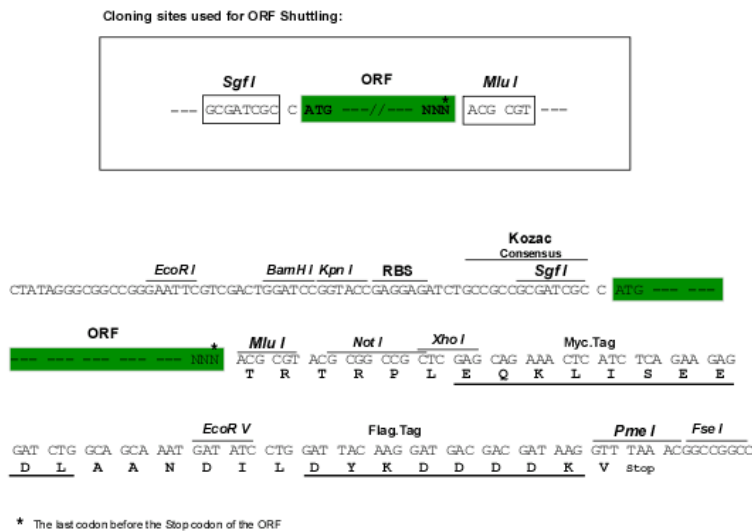
MVWRVPPFLLPILFLASHVGAAVDLTLLANLRLTDPQRFFLTCVSGEAGAGRGSDAWGPPLLEKDDRIV
 RTPPGPLRLARNGSHQVTLRGFSKPSDLVGVFSCVGGAGARRTRVIYVHNSPGAHLDPKVTHTVKNKGD
 TAVLSARVHKEKQTDVIWKSNGSYFYTLDWHEAQDGRFLLQLPNVQPPSSGIYSATYLEASPLGSAFFRL
 IVRGCGAGRWGPGCTKECPGCLHGGVCHDHDGECVCPGFTGTRCEQACREGRFGQSCQECPGISGCRG
 LTFCLPDPYGCSCSGWRSQCQEACAPGHFGADCLRCQCQNGGTCDRFSGCVCPSGWHGVHCEKSDRI
 PQILNMASELEFNLETMPRINCAAGNPFVVRGSIELRKPDTGTVLLSTKAIVEPEKTTAEFEVPRVLVAD
 SGFWEICRVSTSGGQDSRRFKVNVKVPVPLAAPRLLTKQSRQLVVSPLVSFSGDGPSTVRLHYRPQDST
 MDWSTIVVDPSENVTLNLRPKTGYSVRVQLSRPGEEGEGAWGPPTLMTTDCPEPLLQPWLEGWHEGTD
 RLRVSWSLPLVPGPLVGDGFLRLWDGTRGQERRENVSSPQARTALLTGLTPGTHYQLDVLYHCTLLGP
 ASPPAHVLLPPSGPPAPRHLHAQALSDSEIQLTWKHPEALPGISKYVVEVQVAGGADPLWIDVDRPEE
 TSTIIRGLNASTRYLFRMRASIQLGDWSNTVEESTLGNLQAEGPVQESRAAEEGLDQQLILAVGVSVS
 ATCLTILAAALLTLCIRRSCLHRRRTFTYQSGSGEETILQFSSGTLTLTRRPKLQPEPLSYVLEWEDIT
 FEDLIGENFGQVIRAMIKKDKLKMNAIKMLKEYASENDHRDFAGELEVELCKLGHHPNIINLLGACKNR
 GYLIAIEYAPYGNLLDFLRKSRVLETPAFAREHGTASTLSSRQLLRFASDAANGMYLSEKQFIHRDL
 AARNVLVGENLASKIADFGLSRGEEVYVKKTMGRPLVPRWMAIESLNYSVYTTKSDVWSFGVLLWEIVSLG
 GTPYCGMTCAELYEKLPQGYRMEQPRNCDDEVYELMRQCWRDRPYERPPFAQIALQLGRMLEARKAYVM
 SLFENFTYAGIDATAEEA

TRTRPLEQKLISEEDLAANDILDYKDDDDKV

Chromatograms: https://cdn.origene.com/chromatograms/mk6220_d12.zip

Restriction Sites: SgfI-MluI

Cloning Scheme:

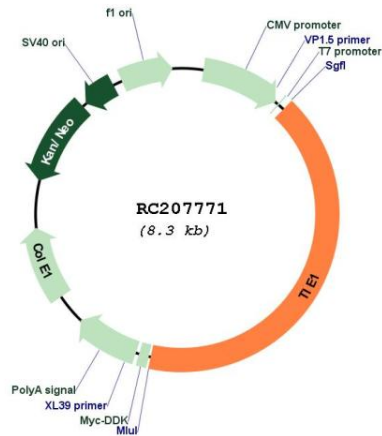


ACCN: NM_005424

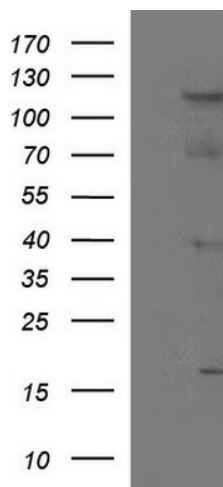
ORF Size: 3414 bp

OTI Disclaimer:	The molecular sequence of this clone aligns with the gene accession number as a point of reference only. However, individual transcript sequences of the same gene can differ through naturally occurring variations (e.g. polymorphisms), each with its own valid existence. This clone is substantially in agreement with the reference, but a complete review of all prevailing variants is recommended prior to use. More info
OTI Annotation:	This clone was engineered to express the complete ORF with an expression tag. Expression varies depending on the nature of the gene.
Components:	The ORF clone is ion-exchange column purified and shipped in a 2D barcoded Matrix tube containing 10ug of transfection-ready, dried plasmid DNA (reconstitute with 100 ul of water).
Reconstitution Method:	<ol style="list-style-type: none">1. Centrifuge at 5,000xg for 5min.2. Carefully open the tube and add 100ul of sterile water to dissolve the DNA.3. Close the tube and incubate for 10 minutes at room temperature.4. Briefly vortex the tube and then do a quick spin (less than 5000xg) to concentrate the liquid at the bottom.5. Store the suspended plasmid at -20°C. The DNA is stable for at least one year from date of shipping when stored at -20°C.
Note:	Plasmids are not sterile. For experiments where strict sterility is required, filtration with 0.22um filter is required.
RefSeq:	NM_005424.2 , NP_005415.1
RefSeq Size:	4000 bp
RefSeq ORF:	3417 bp
Locus ID:	7075
UniProt ID:	P35590
Cytogenetics:	1p34.2
Domains:	pkinase, TyrKc, S_TKc, ig, IG, FN3, EGF, EGF
Protein Families:	Druggable Genome, Protein Kinase, Transmembrane
MW:	125.1 kDa
Gene Summary:	This gene encodes a member of the tyrosine protein kinase family. The encoded protein plays a critical role in angiogenesis and blood vessel stability by inhibiting angiotensin 1 signaling through the endothelial receptor tyrosine kinase Tie2. Ectodomain cleavage of the encoded protein relieves inhibition of Tie2 and is mediated by multiple factors including vascular endothelial growth factor. Alternatively spliced transcript variants encoding multiple isoforms have been observed for this gene. [provided by RefSeq, Nov 2011]

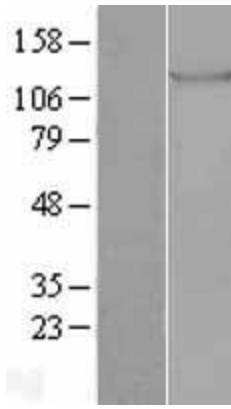
Product images:



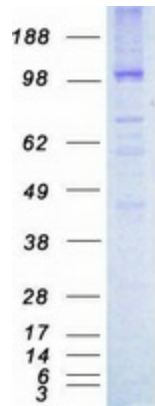
Circular map for RC207771



HEK293T cells were transfected with the pCMV6-ENTRY control (Cat# [PS100001], Left lane) or pCMV6-ENTRY TIE1 (Cat# RC207771, Right lane) cDNA for 48 hrs and lysed. Equivalent amounts of cell lysates (5 ug per lane) were separated by SDS-PAGE and immunoblotted with anti-TIE1 (Cat# [TA590602]). Positive lysates [LY417318] (100ug) and [LC417318] (20ug) can be purchased separately from OriGene.



Western blot validation of overexpression lysate (Cat# [LY417318]) using anti-DDK antibody (Cat# [TA50011-100]). Left: Cell lysates from untransfected HEK293T cells; Right: Cell lysates from HEK293T cells transfected with RC207771 using transfection reagent MegaTran 2.0 (Cat# [TT210002]).



Coomassie blue staining of purified TIE1 protein (Cat# [TP307771]). The protein was produced from HEK293T cells transfected with TIE1 cDNA clone (Cat# RC207771) using MegaTran 2.0 (Cat# [TT210002]).