

## Product datasheet for **RC207766**

### Brk (PTK6) (NM\_005975) Human Tagged ORF Clone

#### Product data:

Product Type:	Expression Plasmids
Product Name:	Brk (PTK6) (NM_005975) Human Tagged ORF Clone
Tag:	Myc-DDK
Symbol:	PTK6
Synonyms:	BRK
Vector:	pCMV6-Entry (PS100001)
E. coli Selection:	Kanamycin (25 ug/mL)
Cell Selection:	Neomycin



[View online »](#)

**ORF Nucleotide Sequence:**

>RC207766 representing NM\_005975  
 Red=Cloning site Blue=ORF Green=Tags(s)

TTTTGTAATACGACTCACTATAGGGCGGCCGGAATTCGTCGACTGGATCCGGTACCGAGGAGATCTGCC  
 GCC**GCGATCGCC**

ATGGTGTCCCGGGACCAGGCTCACCTGGGCCCAAGTATGTGGCCTCTGGGACTCAAGTCCCGGACGG  
 ACGAGGAGCTGAGCTTCCGCGCGGGGACGTCTCCACGTGGCCAGGAAGGAGGAGCAGTGGTGGTGGC  
 CACGCTGTGGACGAGCGGGTGGGGCCGTGGCCAGGGCTATGTGCCCACTACCTGGCCGAGAGG  
 GAGACGGTGGAGTCGGAACCGTGGTTCTTTGGTGCATCTCCCGCTCGGAAGCTGTGCGTCGGCTGCAGG  
 CCGAGGGCAACGCCACGGGCGCCTTCTGATCAGGGTCAGCGAGAAGCCGAGTCCCGACTACGTCCTGTC  
 GGTGCGGGACACGCAGGCTGTGCGGCACTACAAGATCTGGCGGCTGCCGGGGCCGGCTGCACCTGAAC  
 GAGGCGGTGTCTTCTCAGCCTGCCGAGCTTGTGAACACCACAGGGCCAGAGCCTGTCCACGGCC  
 TCGGGTGGCCGCGCCCTGCCGAAGCACGAGCCTGAGCCCTGCCCATTTGGGATGACTGGGAGAGGCC  
 GAGGGAGGAGTTCAGCTCTGCAGGAAGCTGGGGTCCGGTACTTTGGGAGGTCTTCGAGGGGCTCTGG  
 AAAGACCGGGTCCAGGTGGCCATTAAGGTGATTTCTCGAGACAACCTCCTGCACCAGCAGATGCTGCAGT  
 CCGAGATCCAGGCCATGAAGAAGCTGCGGCACAAACACATCCTGGCGCTGTACGCCGTGGTGTCCGTGGG  
 GGACCCCGTGTACATCATCACGGAGCTCATGGCCAAGGGCAGCCTGCTGGAGCTGCTCCGCGACTCTGAT  
 GAGAAAGTCTGCCCGTTTCGGAGCTGTGGACATCGCCTGGCAGGTGGCTGAGGGCATGTGTTACCTGG  
 AGTCGCAGAATTACATCCACCGGACCTGGCCGCCAGGAACATCCTCGTCGGGGAAAACACCCTCTGCAA  
 AGTTGGGACTTCGGTTAGCCAGGCTTATCAAGGAGGACGTCTACCTCTCCATGACCACAATATCCCC  
 TACAAGTGGACGGCCCTGAAGCGCTCTCCGAGGCCATTACTCCACCAATCCGACGTCTGGTCTTTG  
 GGATTCTCCTGCATGAGATGTTTACGAGGGTTCAGGTGCCCTACCCAGGCATGTCCAACCATGAGGCCTT  
 CCTGAGGGTGGACGCGGCTACCGCATGCCCTGCCCTCTGGAGTCCCGCCAGCGTGCACAAGCTGATG  
 CTGACATGCTGGTGCAGGGACCCGAGCAGAGACCCTGCTTCAAGGCCCTGCGGGAGAGGCTCTCCAGCT  
 TCACCAGCTACGAGAACCCGACC

**ACGCGT**ACGCGGCCGCTCGAGCAGAACTCATCTCAGAAGAGGATCTGGCAGCAAATGATATCCTGGATT  
 ACAAGGATGACGACGATAAGGTTTAA

**Protein Sequence:**

>RC207766 representing NM\_005975  
 Red=Cloning site Green=Tags(s)

MVSRDQAHLPKYVGLWDFKSRDEELSFRAAGVDFHVARKEEQWWWATLLDEAGGAVAQGYVPHNYLAER  
 ETVESEPWFFGCI SRSEAVRRLQAEGNATGAFLIRVSEKPSADYVLSVRDQAVRHYKIWRAGGRLHLN  
 EAVSFLSPELVNYHRAQSLSHGLRLAAPCRKHEPEPLPHWDDWERPREEFTLCRKLGSYFGEVFEGLW  
 KDRVQVAIKVISRDNLLHQMLQSEIQAMKLRHKHILALYAVVSVGDPVYIITELMAKGSLELLRDS  
 EKVLPSSELLDIAWQVAEGMICYLESQNYIHRDLAARNILVGENTLCKVDFGLARLIKEDVYLSHDHNIP  
 YKWTAPEALSRGHYSTKSDVWSFGILLHEMF SRGQVPYPGMSNHEAFLRVDAGYRMPCLPCPPSVHKLM  
 LTCWCRDPEQRPCFKALRERLSSFTSYENPT

**TR**TRPLEQKLI SEEDLAANDILDYKDDDDKV

**Chromatograms:**

[https://cdn.origene.com/chromatograms/mg2860\\_f01.zip](https://cdn.origene.com/chromatograms/mg2860_f01.zip)

**Restriction Sites:**

Sgfl-Mlul



**OTI Disclaimer:** Due to the inherent nature of this plasmid, standard methods to replicate additional amounts of DNA in E. coli are highly likely to result in mutations and/or rearrangements. Therefore, OriGene does not guarantee the capability to replicate this plasmid DNA. Additional amounts of DNA can be purchased from OriGene with batch-specific, full-sequence verification at a reduced cost. Please contact our customer care team at [custsupport@origene.com](mailto:custsupport@origene.com) or by calling 301.340.3188 option 3 for pricing and delivery.

The molecular sequence of this clone aligns with the gene accession number as a point of reference only. However, individual transcript sequences of the same gene can differ through naturally occurring variations (e.g. polymorphisms), each with its own valid existence. This clone is substantially in agreement with the reference, but a complete review of all prevailing variants is recommended prior to use. [More info](#)

**OTI Annotation:** This clone was engineered to express the complete ORF with an expression tag. Expression varies depending on the nature of the gene.

**Components:** The ORF clone is ion-exchange column purified and shipped in a 2D barcoded Matrix tube containing 10ug of transfection-ready, dried plasmid DNA (reconstitute with 100 ul of water).

**Reconstitution Method:**

1. Centrifuge at 5,000xg for 5min.
2. Carefully open the tube and add 100ul of sterile water to dissolve the DNA.
3. Close the tube and incubate for 10 minutes at room temperature.
4. Briefly vortex the tube and then do a quick spin (less than 5000xg) to concentrate the liquid at the bottom.
5. Store the suspended plasmid at -20°C. The DNA is stable for at least one year from date of shipping when stored at -20°C.

**RefSeq:** [NM\\_005975.4](#)

**RefSeq Size:** 2519 bp

**RefSeq ORF:** 1356 bp

**Locus ID:** 5753

**UniProt ID:** [Q13882](#)

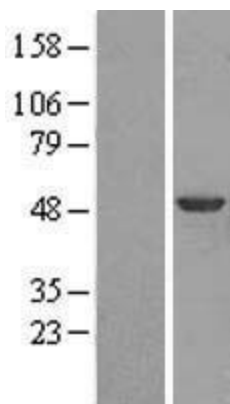
**Cytogenetics:** 20q13.33

**Protein Families:** Druggable Genome, Protein Kinase, Secreted Protein

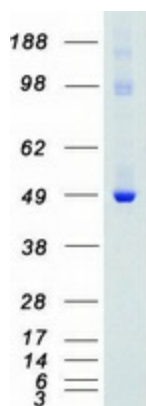
**MW:** 51.7 kDa

**Gene Summary:** The protein encoded by this gene is a cytoplasmic nonreceptor protein kinase which may function as an intracellular signal transducer in epithelial tissues. Overexpression of this gene in mammary epithelial cells leads to sensitization of the cells to epidermal growth factor and results in a partially transformed phenotype. Expression of this gene has been detected at low levels in some breast tumors but not in normal breast tissue. The encoded protein has been shown to undergo autophosphorylation. Alternative splicing results in multiple transcript variants. [provided by RefSeq, Jan 2012]

## Product images:



Western blot validation of overexpression lysate (Cat# [LY416957]) using anti-DDK antibody (Cat# [TA50011-100]). Left: Cell lysates from untransfected HEK293T cells; Right: Cell lysates from HEK293T cells transfected with RC207766 using transfection reagent MegaTran 2.0 (Cat# [TT210002]).



Coomassie blue staining of purified PTK6 protein (Cat# [TP307766]). The protein was produced from HEK293T cells transfected with PTK6 cDNA clone (Cat# RC207766) using MegaTran 2.0 (Cat# [TT210002]).