

Product datasheet for **RC207765**

PDE4A (NM_006202) Human Tagged ORF Clone

Product data:

Product Type:	Expression Plasmids
Product Name:	PDE4A (NM_006202) Human Tagged ORF Clone
Tag:	Myc-DDK
Symbol:	PDE4A
Synonyms:	DPDE2; PDE4; PDE46
Mammalian Cell Selection:	Neomycin
Vector:	pCMV6-Entry (PS100001)
E. coli Selection:	Kanamycin (25 ug/mL)



[View online »](#)

ORF Nucleotide
Sequence:

>RC207765 representing NM_006202
 Red=Cloning site Blue=ORF Green=Tags(s)

TTTTGTAATACGACTCACTATAGGGCGGCCGGAATTCGTCGACTGGATCCGGTACCGAGGAGATCTGCC
 GCC**CGGATCGCC**

ATGCCCTTGGTGGATTTCTTCTGCGAGACCTGCTCTAAGCCTTGGCTGGTGGGCTGGTGGGACCAGTTCA
 AAAGGATGTTGAACCGTGAGCTCACACCTGTACAGAAATGAGCAGGTCCGGAAACCAGGTCTCAGAGTA
 CATTTCCACAACATTCCTGGACAAAACAGAAATGAAGTGGAGATCCCATCACCCACGATGAAGGAACGAGAA
 AAACAGCAAGCGCCGCGACCAAGACCCTCCAGCCGCCCGCCCTGTACCACACTTACAGCCCATGT
 CCCAAATCACAGGGTTGAAAAAGTTGATGCATAGTAACAGCCTGAACAACCTAACATTCCCCGATTGG
 GGTGAAGACCGATCAAGAAGAGCTCCTGGCCCAAGAACTGGAGAACCTGAACAAGTGGGGCTGAACATC
 TTTTGCCTGTCGGATTACGCTGGAGGCCGCTCACTCACCTGCATCATGTACATGATATTCCAGGAGCGGG
 ACCTGCTGAAGAAATCCGCATCCCTGTGGACACGATGGTGACATACATGCTGACGCTGGAGGATCACTA
 CCACGCTGACGTGGCCTACCATAACAGCCTGCACGCAGCTGACGTGCTGCAGTCCACCCAGTACTGCTG
 GCCACGCCTGCACTAGATGCAGTGTTCACGGACCTGGAGATTCTCGCCGCCCTCTTCGCGGCTGCCATCC
 ACGATGTGGATCACCCCTGGGGTCTCCAACCAAGTTCCTCATCAACACCAATTCCGGAGCTGGCGCTCATGTA
 CAACGATGAGTCGGTGTCTGAGAATCACCACTGGCCGTGGGCTTCAAGCTGCTGCAAGGAGGACAACCTGC
 GACATCTTCCAGAACCTCAGCAAGCGCCAGCGGACAGCCTACGCAAGATGGTCAATCGACATGGTGTCTGG
 CCACGGACATGTCCAAGCACATGACCCTCCTGGCTGACCTGAAGACCATGGTGGAGACCAAGAAAGTGAC
 CAGCTCAGGGTCTCCTGCTAGATAACTCCGACCGCATCCAGGTCTCCGGAACATGGTGCAGTGT
 GCCGACCTCAGCAACCCACCAAGCCGCTGGAGCTGTACCGCCAGTGGACAGACCGCATCATGGCCGAGT
 TCTTCCAGCAGGGTACCGAGAGCGGAGCGTGGCATGGAAATCAGCCCCATGTGTGACAAGCACACTGC
 CTCCGTGGAGAAGTCTCAGGTGGGTTTTATTGACTACATTGTGCACCCATTGTGGGAGACCTGGGCGGAC
 CTTGTCCACCCAGATGCCAGGAGATCTTGGACACTTGGAGGACAACCGGGACTGGTACTACAGCGCCA
 TCCGGCAGAGCCCATCTCCGCCACCCGAGGAGGAGTCAAGGGGGCCAGGCCACCCACCCCTGCCTGACAA
 GTTCCAGTTTGGCTGACGCTGGAGGAGGAAGAGGAGGAAGAAATATCAATGGCCAGATACCGTGCACA
 GCCAAGAGGCATTGACTGCGCAGGATTGTGAGGAGTGCAGGAAGCTCTGGATGCAACCATAGCCTGGG
 AGGCATCCCCGGCCAGGAGTCTTGGAGTTATGGCACAGGAAGCATCCCTGGAGGCCGAGCTGGAGGC
 AGTGTATTTGACACAGCAGGCACAGTCCACAGGCAGTGCACCTGTGGCTCCGGATGAGTTCTCGTCCCGG
 GAGGAATTCGTGGTTGCTGTAAGCCACAGCAGCCCTCTGCCCTGGCTCTCAAAGCCCCCTTCTCCCTG
 CTTGGAGGACCCTGTCTGTTTCAGAGCATGCCCGGGCCTCCCGGCCTCCCTCCACGGCGGCCGAGGT
 GGAGGCCAACGAGAGCACCAAGGCTGCCAAGAGGGCTTGCAAGTGCCTGCGCAGGGACATTTGGGGAGGAC
 ACATCCGCACTCCAGCTCCTGGTGGCGGGGGTCAAGTGGAGACCCTACC

ACGCGTACGCGGCCGCTCGAGCAGAAACTCATCTCAGAAGAGGATCTGGCAGCAATGATATCCTGGATT
 ACAAGGATGACGACGATAAGGTTTAA

Protein Sequence: >RC207765 representing NM_006202
Red=Cloning site Green=Tags(s)

MPLVDFFCETCSKPWLVGWWDQFKRMLNRELTHLSEMSRSGNQVSEYISTTFLDKQNEVEIPSPTMKERE
 KQQAPRRPSPQPPPPVPHLQPMSQITGLKMLHNSLNNSNIPRFGVKTDQEELLAQELNENLNKWLNI
 FCVSDYAGGRSLTCIMYMFQERDLLKKFRIPVDTMVTYMLTLEDHYHADVAYHNSLHAADVLSQTHVLL
 ATPALDAVFTDLEILAALFAAAIHDVDHPGVSNQFLINTNSELALMYNDESVLENHHLAVGFKLLQEDNC
 DIFQNLSKRQRQLRKMVIDMVLATDMSKHMTLLADLKTMYETKKVTSSGVLLLDNYSDRIQVLRNMVHC
 ADLSNPTKPLELYRQWTDRI MAEFFQQGDREREREGMEISPMCDKHTASVEKSQVGFIDYIVHPLWETWAD
 LVHPDAQEILDLEDNRDWYSAIRQSPSPPEEESRGP GHPPLPKFQFELTLEEEEEEEISMAQIPCT
 AQEALTAQGLSGVEEALDATI AWEASPAQESLEVMAQEASLEAELEAVYL TQQAQSTGSAPVAPDEFSSR
 EEFVAVSHSSPSALALQSPLLPAWRTL SVSEHAPGLPGLPSTAAEVEAQRHQAAKRACSACAGTFGED
 TSALPAPGGGGGGDPT

TRTRPLEQKLISEEDLAANDILDYKDDDDKV

Chromatograms: https://cdn.origene.com/chromatograms/mk8078_g10.zip

Restriction Sites: SgfI-MluI

Cloning Scheme:



ACCN: NM_006202

ORF Size: 1941 bp

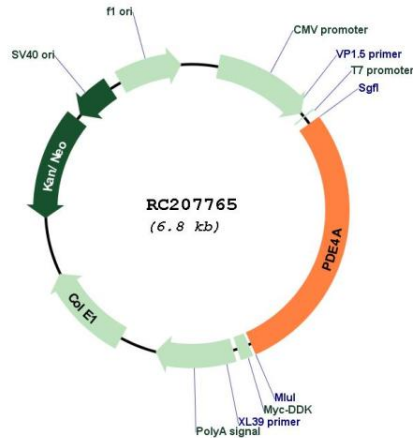
OTI Disclaimer: The molecular sequence of this clone aligns with the gene accession number as a point of reference only. However, individual transcript sequences of the same gene can differ through naturally occurring variations (e.g. polymorphisms), each with its own valid existence. This clone is substantially in agreement with the reference, but a complete review of all prevailing variants is recommended prior to use. [More info](#)

OTI Annotation: This clone was engineered to express the complete ORF with an expression tag. Expression varies depending on the nature of the gene.

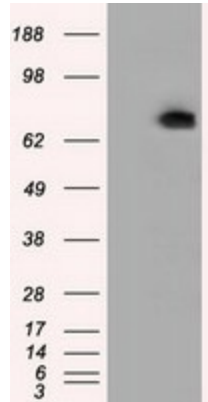
Components: The ORF clone is ion-exchange column purified and shipped in a 2D barcoded Matrix tube containing 10ug of transfection-ready, dried plasmid DNA (reconstitute with 100 ul of water).

Reconstitution Method:	<ol style="list-style-type: none">1. Centrifuge at 5,000xg for 5min.2. Carefully open the tube and add 100ul of sterile water to dissolve the DNA.3. Close the tube and incubate for 10 minutes at room temperature.4. Briefly vortex the tube and then do a quick spin (less than 5000xg) to concentrate the liquid at the bottom.5. Store the suspended plasmid at -20°C. The DNA is stable for at least one year from date of shipping when stored at -20°C.
Note:	Plasmids are not sterile. For experiments where strict sterility is required, filtration with 0.22um filter is required.
RefSeq:	NM_006202.3
RefSeq Size:	4255 bp
RefSeq ORF:	1944 bp
Locus ID:	5141
UniProt ID:	P27815
Cytogenetics:	19p13.2
Protein Families:	Druggable Genome
Protein Pathways:	Progesterone-mediated oocyte maturation, Purine metabolism
MW:	72 kDa
Gene Summary:	The protein encoded by this gene belongs to the cyclic nucleotide phosphodiesterase (PDE) family, and PDE4 subfamily. This PDE hydrolyzes the second messenger, cAMP, which is a regulator and mediator of a number of cellular responses to extracellular signals. Thus, by regulating the cellular concentration of cAMP, this protein plays a key role in many important physiological processes. Alternatively spliced transcript variants encoding different isoforms have been described for this gene.[provided by RefSeq, Jul 2011]

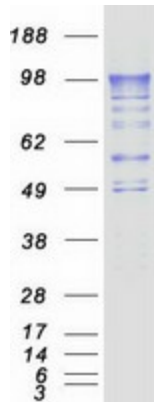
Product images:



Circular map for RC207765



HEK293T cells were transfected with the pCMV6-ENTRY control (Cat# [PS100001], Left lane) or pCMV6-ENTRY PDE4A (Cat# RC207765, Right lane) cDNA for 48 hrs and lysed. Equivalent amounts of cell lysates (5 ug per lane) were separated by SDS-PAGE and immunoblotted with anti-PDE4A (Cat# [TA501192]).



Coomassie blue staining of purified PDE4A protein (Cat# [TP307765]). The protein was produced from HEK293T cells transfected with PDE4A cDNA clone (Cat# RC207765) using MegaTran 2.0 (Cat# [TT210002]).