

Product datasheet for RC207761L1

ST3GAL2 (NM_006927) Human Tagged Lenti ORF Clone

Product data:

Product Type:	Expression Plasmids
Product Name:	ST3GAL2 (NM_006927) Human Tagged Lenti ORF Clone
Tag:	Myc-DDK
Symbol:	ST3GAL2
Synonyms:	Gal-NAc6S; SIAT4B; ST3GalA.2; ST3GALII
Mammalian Cell Selection:	None
Vector:	pLenti-C-Myc-DDK (PS100064)
E. coli Selection:	Chloramphenicol (34 ug/mL)
ORF Nucleotide Sequence:	The ORF insert of this clone is exactly the same as(RC207761).
Restriction Sites:	SgfI-MluI
Cloning Scheme:	

Cloning sites used for ORF Shuttling:



* The last codon before the Stop codon of the ORF.

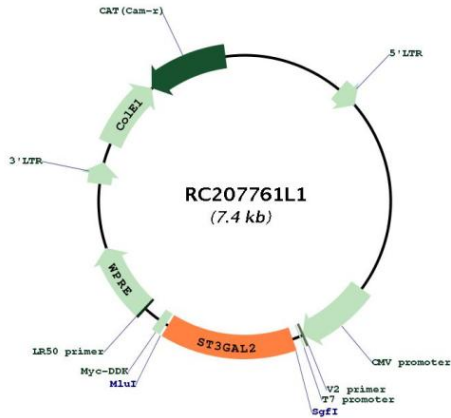
ACCN:	NM_006927
ORF Size:	1050 bp



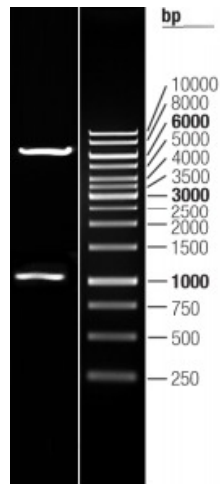
[View online »](#)

OTI Disclaimer:	The molecular sequence of this clone aligns with the gene accession number as a point of reference only. However, individual transcript sequences of the same gene can differ through naturally occurring variations (e.g. polymorphisms), each with its own valid existence. This clone is substantially in agreement with the reference, but a complete review of all prevailing variants is recommended prior to use. More info
OTI Annotation:	This clone was engineered to express the complete ORF with an expression tag. Expression varies depending on the nature of the gene.
Components:	The ORF clone is ion-exchange column purified and shipped in a 2D barcoded Matrix tube containing 10ug of transfection-ready, dried plasmid DNA (reconstitute with 100 ul of water).
Reconstitution Method:	<ol style="list-style-type: none">1. Centrifuge at 5,000xg for 5min.2. Carefully open the tube and add 100ul of sterile water to dissolve the DNA.3. Close the tube and incubate for 10 minutes at room temperature.4. Briefly vortex the tube and then do a quick spin (less than 5000xg) to concentrate the liquid at the bottom.5. Store the suspended plasmid at -20°C. The DNA is stable for at least one year from date of shipping when stored at -20°C.
RefSeq:	NM_006927.2
RefSeq Size:	4450 bp
RefSeq ORF:	1053 bp
Locus ID:	6483
UniProt ID:	Q16842
Cytogenetics:	16q22.1
Domains:	Glyco_transf_29
Protein Families:	Transmembrane
Protein Pathways:	Glycosphingolipid biosynthesis - ganglio series, Glycosphingolipid biosynthesis - globo series, Keratan sulfate biosynthesis, Metabolic pathways, O-Glycan biosynthesis
MW:	40.2 kDa
Gene Summary:	The protein encoded by this gene is a type II membrane protein that catalyzes the transfer of sialic acid from CMP-sialic acid to galactose-containing substrates. The encoded protein is normally found in the Golgi but can be proteolytically processed to a soluble form. This protein, which is a member of glycosyltransferase family 29, can use the same acceptor substrates as does sialyltransferase 4A. [provided by RefSeq, Jul 2008]

Product images:



Circular map for RC207761L1



Double digestion of RC207761L1 using SgfI and MluI