

## Product datasheet for **RC207757**

### H963 (GPR171) (NM\_013308) Human Tagged ORF Clone

#### Product data:

Product Type:	Expression Plasmids
Product Name:	H963 (GPR171) (NM_013308) Human Tagged ORF Clone
Tag:	Myc-DDK
Symbol:	H963
Synonyms:	H963
Mammalian Cell Selection:	Neomycin
Vector:	pCMV6-Entry (PS100001)
E. coli Selection:	Kanamycin (25 ug/mL)
ORF Nucleotide Sequence:	>RC207757 ORF sequence Red=Cloning site Blue=ORF Green=Tags(s)

TTTTGTAATACGACTCACTATAGGGCGGCCGGAATTCGTCGACTGGATCCGGTACCGAGGAGATCTGCC  
GCC**CGATCGCC**

ATGACAAACAGTTCGTTCTCTGCCAGTTTATAAAGATCTGGAGCCATTCACGTATTTTTTTTATTTAG  
TTTTCTTGTGGAAATTATTGGAAGTTGTTTTGCAACCTGGGCTTTTACAGAAGAATACGAATCACAG  
GTGTGTGAGCATCTACTTAATTAATTTGCTTACAGCCGATTTCTGCTTACTCTGGCATTACCAGTGAAA  
ATTGTTGTTGACTTGGGTGTGGCACCTTGAAGCTGAAGATATCCACTGCCAAGTAACAGCCTGCCTCA  
TCTATATCAATATGTATTTATCAATTATCTTCTTAGCATTGTGACGATTGACCGCTGTCTTCAGCTGAC  
ACACAGCTGCAAGATCTACCGAATACAAGAACCCGGATTTGCCAAAATGATATCAACCGTTGTGTGGCTA  
ATGGTCCTTCTTATAATGGTGCCAAATATGATGATTCCCATCAAAGACATCAAGGAAAAGTCAAATGTGG  
GTTGTATGGAGTTTAAAAAGGAATTTGGAAGAAATTTGGCATTGCTGACAAATTTTATATGTGTAGCAAT  
ATTTTTAAATTTCTCAGCCATCATTTTTAATATCCAATTGCCTTGTAAATTCGACAGCTCTACAGAAACAAA  
GATAATGAAAATTACCCAAATGTGAAAAGGCTCTCATCAACATACTTTTAGTGACCACGGGCTACATCA  
TATGCTTTGTTTCCCTTACCACATTGTCCGAATCCCGTATACCCTCAGCCAGACAGAAGTCATAACTGATTG  
CTCAACCAGGATTTCACTCTTCAAAGCCAAAGAGGCTACACTGCTCCTGGCTGTGTGCAACCTGTGCTTT  
GATCCTGTCTGTACTATCACCTCTCAAAGCATTCCGCTCAAAGGTCAGTACTGAGACTTTTGCCTCACCTA  
AAGAGACCAAGGCTCAGAAAGAAAATTAAGATGTGAAAATAATGCA

**ACGCGT**ACGCGGCCGCTCGAGCAGAAACTCATCTCAGAAGAGGATCTGGCAGCAAATGATATCCTGGATT  
ACAAGGATGACGACGATAAGGTTTAA



[View online »](#)

**Protein Sequence:** >RC207757 protein sequence  
Red=Cloning site Green=Tags(s)

MTNSSFFCPVYKDLEPFTYFFYLVFLVGIIGSCFATWAFIQKNTNHRCVSIYLINLLTADFLLLTALPVK  
 IVVDLGVAPWKLKIFHCQVTACLIYINMYLSIIFLAFVSDRCLQLTHSCKIYRIQEPGFAKMISTVVWL  
 MVLLIMVPMMPIKDIKEKSNVGCMEFKKEFGRNWHLLTNFICVAIFLNFSAILILSNCLVIRQLYRNK  
 DNENYPNVKKALINILLVTTGYIICFVPHYIVRIPYTLSSQTEVITDCSTRISLFFAKEATLLLVSNLCF  
 DPVLYYHLSKAFRSKVTETTFASPKETKAQKEKLRCEENNA

TRTRPLEQKLISEEDLAANDILDYKDDDDKV

**Chromatograms:** [https://cdn.origene.com/chromatograms/mk6192\\_b03.zip](https://cdn.origene.com/chromatograms/mk6192_b03.zip)

**Restriction Sites:** SgfI-MluI

**Cloning Scheme:**



**ACCN:** NM\_013308

**ORF Size:** 957 bp

**OTI Disclaimer:** The molecular sequence of this clone aligns with the gene accession number as a point of reference only. However, individual transcript sequences of the same gene can differ through naturally occurring variations (e.g. polymorphisms), each with its own valid existence. This clone is substantially in agreement with the reference, but a complete review of all prevailing variants is recommended prior to use. [More info](#)

**OTI Annotation:** This clone was engineered to express the complete ORF with an expression tag. Expression varies depending on the nature of the gene.

**Components:** The ORF clone is ion-exchange column purified and shipped in a 2D barcoded Matrix tube containing 10ug of transfection-ready, dried plasmid DNA (reconstitute with 100 ul of water).

**Reconstitution Method:**

1. Centrifuge at 5,000xg for 5min.
2. Carefully open the tube and add 100ul of sterile water to dissolve the DNA.
3. Close the tube and incubate for 10 minutes at room temperature.
4. Briefly vortex the tube and then do a quick spin (less than 5000xg) to concentrate the liquid at the bottom.
5. Store the suspended plasmid at -20°C. The DNA is stable for at least one year from date of shipping when stored at -20°C.

**Note:** Plasmids are not sterile. For experiments where strict sterility is required, filtration with 0.22um filter is required.

**RefSeq:** [NM\\_013308.2](#), [NP\\_037440.2](#)

**RefSeq Size:** 1862 bp

**RefSeq ORF:** 960 bp

**Locus ID:** 29909

**UniProt ID:** [O14626](#)

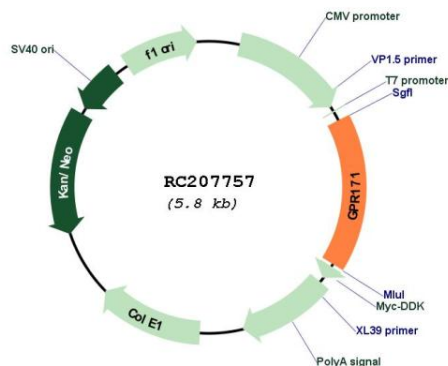
**Cytogenetics:** 3q25.1

**Protein Families:** Druggable Genome, GPCR, Transmembrane

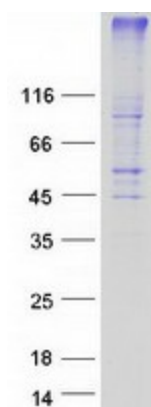
**MW:** 36.7 kDa

**Gene Summary:** Orphan receptor.[UniProtKB/Swiss-Prot Function]

### Product images:



Circular map for RC207757



Coomassie blue staining of purified GPR171 protein (Cat# [TP307757]). The protein was produced from HEK293T cells transfected with GPR171 cDNA clone (Cat# RC207757) using MegaTran 2.0 (Cat# [TT210002]).