

Product datasheet for **RC207752**

NKX2.8 (NKX2-8) (NM_014360) Human Tagged ORF Clone

Product data:

Product Type:	Expression Plasmids
Product Name:	NKX2.8 (NKX2-8) (NM_014360) Human Tagged ORF Clone
Tag:	Myc-DDK
Symbol:	NKX2.8
Synonyms:	Nkx2-9; NKX2.8; NKX2H
Mammalian Cell Selection:	Neomycin
Vector:	pCMV6-Entry (PS100001)
E. coli Selection:	Kanamycin (25 ug/mL)
ORF Nucleotide Sequence:	>RC207752 ORF sequence Red=Cloning site Blue=ORF Green=Tags(s)

TTTTGTAATACGACTCACTATAGGGCGGCCGGAATTCGTCGACTGGATCCGGTACCGAGGAGATCTGCC
GCC**CGATCGCC**

ATGGCCACCTCTGGAGCCTGAGCTTCACCGTGCGCAGCCTTCTAGATTTACCCGAGCAGGACGCGCAAC
ACCTGCCGAGGCGGGAGCCAGAACCACGCGCCCCCAGCCCGACCCCTGCGCCGCTGGCTGGATTCGGA
GCGCGGCCACTACCTTCTCGGACGAGAGCAGCCTGGAGACCAGCCCGCCAGACTCGTCGACGCGGCC
TCCGCTAGGCCCGCTCTCCGGGCTCGGACGCCGAGAAAAGGAAGAAGCGCGGGTCTATTCTCCAAGG
CGCAGACGCTGGAGTTGGAGCGCGCTTCCGGCAGCAGCGGTACCTGTCTGCGCCCGAGCGCGAGCAGCT
GGCAGACCTGCTTCGCTCACGCCACGCAGGTAAGATCTGGTTCCAGAATCATCGCTACAAGCTGAAG
CGCGCTCGCGCTCCAGGGCGGGGAGTCCGCTGACCTGGCAGCATCCGCGAGCTGCACGCCGCGCCCCG
GCCTGCTCGCTCGCTGGTGGTCCGGTCTTGTTCGCGACGGGCAGCCGTGCGGCGGGCGGGCGGTGG
CGAGGTGGGAACCGCCGCGGCCAGGAGAAGTGGCGGCCCTCCAGCCGCGCTGCCCTCTGCCGGGC
TACCCTGCCTTCGGTCCCGGCTCGGCGCTTGGCTCTTCCCCGCCTACCAGCACTTAGCATCCCCGCC
TGGTCTCCTGGAAGTGG

ACGCGTACGCGGCCGCTCGAGCAGAACTCATCTCAGAAGAGGATCTGGCAGCAAATGATATCCTGGATT
ACAAGGATGACGACGATAAGGTTTAA



[View online »](#)

Protein Sequence: >RC207752 protein sequence
Red=Cloning site Green=Tags(s)

MATSGRLSFTVRSLLDLPEQDAQHLPRPEPEPRAPQPDPCAAWLDSERGHYPSSDESSLETSPDSSQRP
 SARPASPGSDAEKRKRRLVLFKAQTLELERRFRQRYLSAPEREQLASLLRLTPTQVKIWFQNHRYKLLK
 RARAPGAAESPDLAASAELHAAPGLLRVVVPLVRDQPCGGGGGGEVGTAAAQEKCGAPPAACPLPG
 YPAFGPGSALGLFPAYQHLASPALVSWNW

TRTRPLEQKLISEEDLAANDILDYKDDDDKV

Chromatograms: https://cdn.origene.com/chromatograms/mk6268_a08.zip

Restriction Sites: SgfI-MluI

Cloning Scheme:

Cloning sites used for ORF Shuttling:



* The last codon before the Stop codon of the ORF

ACCN: NM_014360

ORF Size: 717 bp

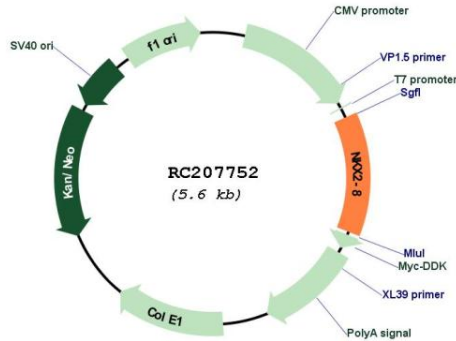
OTI Disclaimer: The molecular sequence of this clone aligns with the gene accession number as a point of reference only. However, individual transcript sequences of the same gene can differ through naturally occurring variations (e.g. polymorphisms), each with its own valid existence. This clone is substantially in agreement with the reference, but a complete review of all prevailing variants is recommended prior to use. [More info](#)

OTI Annotation: This clone was engineered to express the complete ORF with an expression tag. Expression varies depending on the nature of the gene.

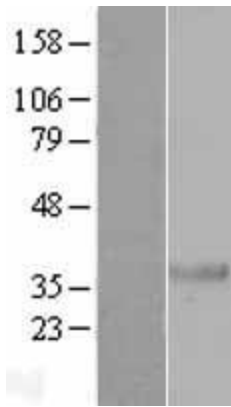
Components: The ORF clone is ion-exchange column purified and shipped in a 2D barcoded Matrix tube containing 10ug of transfection-ready, dried plasmid DNA (reconstitute with 100 ul of water).

Reconstitution Method:	<ol style="list-style-type: none">1. Centrifuge at 5,000xg for 5min.2. Carefully open the tube and add 100ul of sterile water to dissolve the DNA.3. Close the tube and incubate for 10 minutes at room temperature.4. Briefly vortex the tube and then do a quick spin (less than 5000xg) to concentrate the liquid at the bottom.5. Store the suspended plasmid at -20°C. The DNA is stable for at least one year from date of shipping when stored at -20°C.
Note:	Plasmids are not sterile. For experiments where strict sterility is required, filtration with 0.22um filter is required.
RefSeq:	NM_014360.4
RefSeq Size:	1857 bp
RefSeq ORF:	720 bp
Locus ID:	26257
UniProt ID:	O15522
Cytogenetics:	14q13.3
Protein Families:	Druggable Genome, Transcription Factors
MW:	25.9 kDa
Gene Summary:	The protein encoded by this gene is a homeobox-containing developmental regulator associated with liver development. The encoded protein binds to the alpha-fetoprotein (AFP) gene promoter and increases the expression of AFP. This gene is overexpressed in some lung cancers and is linked to poor patient survival, possibly due to its resistance to cisplatin. This gene is aberrantly methylated in pancreatic cancer, deleted in squamous cell lung carcinomas, and acts as a tumor suppressor in esophageal cancer. Mutations in this gene may also be a cause of neural tube defects. [provided by RefSeq, Dec 2015]

Product images:



Circular map for RC207752



Western blot validation of overexpression lysate (Cat# [LY415341]) using anti-DDK antibody (Cat# [TA50011-100]). Left: Cell lysates from untransfected HEK293T cells; Right: Cell lysates from HEK293T cells transfected with RC207752 using transfection reagent MegaTran 2.0 (Cat# [TT210002]).



Coomassie blue staining of purified NKX2-8 protein (Cat# [TP307752]). The protein was produced from HEK293T cells transfected with NKX2-8 cDNA clone (Cat# RC207752) using MegaTran 2.0 (Cat# [TT210002]).