

## Product datasheet for **RC207748**

### **GPRASP2 (NM\_001004051) Human Tagged ORF Clone**

#### **Product data:**

Product Type:	Expression Plasmids
Product Name:	GPRASP2 (NM_001004051) Human Tagged ORF Clone
Tag:	Myc-DDK
Symbol:	GPRASP2
Synonyms:	DFNX7; GASP2
Mammalian Cell Selection:	Neomycin
Vector:	pCMV6-Entry (PS100001)
E. coli Selection:	Kanamycin (25 ug/mL)



[View online »](#)

**ORF Nucleotide Sequence:**

>RC207748 ORF sequence  
 Red=Cloning site Blue=ORF Green=Tags(s)

TTTTGTAATACGACTCACTATAGGGCGGCCGGGAATTCGTCGACTGGATCCGGTACCGAGGAGATCTGCC  
 GCC**CGATCGCC**

ATGACTGGGGCAGAGATTGAGCCTAGTGCCAGGCCAAGCCTGAAAAGAAGGCTGGGAAGAGGTTATCG  
 CTGGGCCTGAGAGAGAGAATGATGTCCCTCTGGTGGTCAGACCCAAGGTTAGGACCCAGGCAACTACTGG  
 GGCAAGGCCAAAACTGAGACCAAGTCTGTGCCTGCGGCAAGGCCAAAACTGAGGCCAAAGCAATGTCT  
 GGGCAAGGCCAAAACTGAGGTCCAAGTAATGGGTGGTGAAGACCCAAAAACGGAGGCTCAAGGAATCA  
 CAGGGGCCAGGCCAAAAACCGATGCCAGGGCAGTAGGTGGCGCTCGTTCTAAAAGTATGCCAAGGCAAT  
 CCCTGGAGCAAGGCCAAGGATGAGGCCAGGCATGGGCCAGAGTGAATTTGGGACTGAAGCAGTGTCA  
 CAGGCAGAAGGAGTGTCCAGACTAATGCCGTTGCTTGGCCACTGGCCACTGCTGAGTCTGGATCAGTTA  
 CTAATCTAAGGGCCTGTCTATGGATAGAGAAGTCAATGTGGATGCTGAAACCTTTCTGGCACCCA  
 GGGTCAGAAAGGAATCCAGCCCTGGTTTGGACCAGGGGAGGAGACTAATATGGGGTCTTGGTGTCTATTCC  
 AGGCCAGGGCCAGAGAGAGGCCCTCTAATGAGTCTGGGTTCTGGTCAGCAGATGAGACCTCTACAGCGT  
 CTTCTTTCTGGACTGGAGAAGAGACAAGTGTGAGTATGGCCAGGGAAGAGTCCAATACCAGGTCACG  
 GCACAGGGCTAAACATCAGACTAATCCCAGGTCCAGGCCAGATCCAAGCAAGAAGCCTATGTTGATTCC  
 TGGTCTGGATCTGAGGATGAGGCCAGCAACCCATTCTCCTTCTGGGTTGGAGAAAATACCAATAACTTGT  
 TCAGGCCAGAGTCAGGGAGGAGGCAAAATCAGGTCCAAGCTCAGGACAAAATAGAGAAGATTGTTTTGA  
 ATCTGAGTCTGAAGATGAGTCTATAAGCAGTCTGGGTTTTGCCTGGAGAAGAGGCCAATAGTAGATTC  
 AGGCACAGAGACAAAGAAGATCCTAATACTGCCTTGAAGTCAAGGCCCAGAAAGATGTTGACAGTGATA  
 GGGTCAAACAAGAACCAGGTTTGGAGGGAAGTCAATTATGGGTCCTGGTCTGGGCGAGAAAAGAGGC  
 CAGTTTGGAGGGTGGAGCTTCAGCAATCTGTGAATCTGAGCCAGGAACTGAGGAGGGGCCATTGGCGGA  
 TCCGCGTACTGGGCTGAGGAAAAGTCCAGTTTGGGGGCTGTGGCCAGAGAAGAGGCCAAGCCGGAGTCTG  
 AAGAAGAGGCCATATTTGGGTCCTGTTCTGGACAGAGATGAGGCCTGCTTTGACCTAAATCCCTGTCC  
 TGTGTACAAGGTCAGTGATAGGTTTCAAGATGCAGCTGAGGAGCTTAATGCATCTCCAGGCCCAAACC  
 TGGGACGAGGTCAGTGTGAATCAAACCTGGTCTTTTTTTCATGGGGTTGGCTTCCGATCCACAAGCCCT  
 TTGGAATCCCGAAGAGGCTTCTGAAATGCTTGAAGCAAGCCCAAGAACCTGGAACCTAGCCAGAAAG  
 AGAAGAGCAGGAATCTTTGCTTCAAGCTGATCAGCCTAGTCTGAGTTCACATTTAGTATGATCCTTCC  
 TACCGGTCAGTCCGGAAATTCGAGAGCATCTTAGGGCCAGGAGAGTGCAGAGTCTGAGAGTTGGTCAT  
 GCAGCTGCATACAATGTGAGCTGAAAATTTGGTTCTGAAGAGTTTGAAGAATTCCTTTTATTAATGGACAA  
 AATTCGGGATCCTTTTATTCATGAAATATCTAAAATGCAATGGGTATGAGAAGTCTTCTCAATTTACC  
 CGAGATTTCAATTCGAGATTCAGGTGTTGTCTCACTTATTGAAACCTTGTCTAATTTATCCATCCTCTAGAG  
 TTAGGACAAGTTTTTTGGAAAATATGATTCACATGGCTCCACCTATCCAATCTAAACATGATTGAGAC  
 ATTCATATGTCAAGTGTGTGAGGAAACCCTTGCACATAGTGTGGATTCCCTTGGAGCAGTACTGGAATA  
 AGGATGCTTAGACACCTCACTATGACTATTGACTATCACACACTGATTGCCAACTATATGTCGGGTTTC  
 TCTCCTTATTAACCACAGCCAATGCGAGAACGAAGTTTACGTTCTGAAAATGCTATTGAATTTGTCTGA  
 AAATCCTGCTGTGGCAAAAAAACTATTCAAGTCCAAAGCTCTTTCAATATTTGTGGTCTCTTTAACATA  
 GAAGAGACAAATGATAATATTCAAATTTGTTATTAATAATGTTTCAGAATATCAGTAACATTATAAAAAGTG  
 GAAAGATGTCCTTAATTGATGATGATTTTCAAGTCTTGGCCGCTTATTTCTGCATTTCTGTAATTTGAGGA  
 GTTAGCTAAGCAACTACAAGCCCAATAGACAACCAAAATGATCCTGAGGTGGGACAACAAAGT

**ACGCGT**ACGCGGCCGCTCGAGCAGAAACTCATCTCAGAAGAGGATCTGGCAGCAATGATATCCTGGATT  
 ACAAGGATGACGACGATAAGGTTTAA

**Protein Sequence:** >RC207748 protein sequence  
Red=Cloning site Green=Tags(s)

MTGAEIEPSAQAKPEKKAGEEVIAGPERENDVPLVVRPKVVRTQATTGARPKTETKSVPAARPKTEAQAMS  
GARPKTEVQVMGGARPKTEAQGITGARPKTDARAVGGARSKTDAKAI PGARPKDEAQAQSEFGTEAVS  
QAEGVSTNAVAWPLATAESGVS VKSKGLSMDREL VNVAETFPGTQGGKGIQPWFGPEETNMGSWCYS  
RPRAREEASNESGFWSADETSTASSFWTGEETS VRSWPRESNTRSRRRAKHQTNPRSRPRSKQEAYVDS  
WSGSEDEASNPF SFWVGENTNLF RPRVREEANIRSKLRTNREDCFESESEDEFYKQSWVLPGEEANSRF  
RHRDKEDPNTALKLRAQKDVSDRVKQEPREEEVIIGSWFWAEKEASLEGGASAI CESEPGTEEGAIGG  
SAYWAEKSSLGAVAREEAKPESEEEAIFGSWFWDRDEACFDLNPCPVYKVSDFRDAEEELNASSRPQT  
WDEVTVEFKPGLFHG VGFIRSTSPFGIPEEASEMLEAKPKNLELSPEGEEQESLLQPDQPSPEFTFQYDPS  
YRSVREIREHLRARESAESESWSCSCIQCELKIGSEEFEEFLLLMDKIRDPIHEISKIAMGMRSASQFT  
RDFIRDSGVVSLIETLLNYPSSRVRTSFL ENMIHMAPPYPNLNMIETFICQVCEETLAHSVDSLEQLTGI  
RMLRHLTMTIDYHTLIANYMSGFLSLLTTANARTKFHVLKMLLNLSENPAVAKKLFSAKALSIFVGLFNI  
EETNDNIQIVIKMFQNI SNI IKS GKMSLIDDDFSLEPLISAFREFEELAKQLQAQIDNQNDPEVGGQS

TRTRPLEQKLISEEDLAANDILDYKDDDDKV

**Chromatograms:** [https://cdn.origene.com/chromatograms/mk6692\\_b11.zip](https://cdn.origene.com/chromatograms/mk6692_b11.zip)

**Restriction Sites:** Sgfl-Mlul



**Reconstitution Method:**

1. Centrifuge at 5,000xg for 5min.
2. Carefully open the tube and add 100ul of sterile water to dissolve the DNA.
3. Close the tube and incubate for 10 minutes at room temperature.
4. Briefly vortex the tube and then do a quick spin (less than 5000xg) to concentrate the liquid at the bottom.
5. Store the suspended plasmid at -20°C. The DNA is stable for at least one year from date of shipping when stored at -20°C.

**RefSeq:** [NM\\_001004051.4](#)

**RefSeq Size:** 3818 bp

**RefSeq ORF:** 2517 bp

**Locus ID:** 114928

**UniProt ID:** [Q96D09](#)

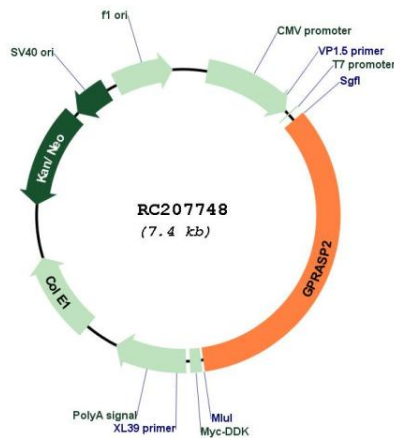
**Cytogenetics:** Xq22.1

**Protein Families:** Druggable Genome

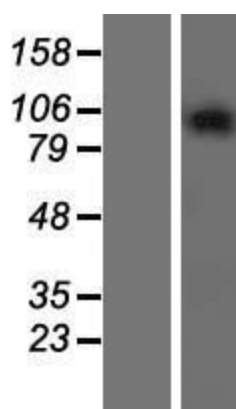
**MW:** 93.8 kDa

**Gene Summary:** The protein encoded by this gene is a member of a family that regulates the activity of G protein-coupled receptors (GPCRs). The encoded protein has been shown to be capable of interacting with several GPCRs, including the M1 muscarinic acetylcholine receptor and the calcitonin receptor. Several transcript variants encoding the same protein have been found for this gene. [provided by RefSeq, May 2010]

### Product images:



Circular map for RC207748



Western blot validation of overexpression lysate (Cat# [LY408692]) using anti-DDK antibody (Cat# [TA50011-100]). Left: Cell lysates from untransfected HEK293T cells; Right: Cell lysates from HEK293T cells transfected with [RC215168] using transfection reagent MegaTran 2.0 (Cat# [TT210002]).