

## Product datasheet for **RC207746**

### CTDSPL2 (NM\_016396) Human Tagged ORF Clone

#### Product data:

Product Type:	Expression Plasmids
Product Name:	CTDSPL2 (NM_016396) Human Tagged ORF Clone
Tag:	Myc-DDK
Symbol:	CTDSPL2
Synonyms:	HSPC058; HSPC129; SCP4
Mammalian Cell Selection:	Neomycin
Vector:	pCMV6-Entry (PS100001)
E. coli Selection:	Kanamycin (25 ug/mL)



[View online »](#)

ORF Nucleotide  
Sequence:

>RC207746 ORF sequence  
Red=Cloning site Blue=ORF Green=Tags(s)

TTTTGTAATACGACTCACTATAGGGCGGCCGGAATTCGTCGACTGGATCCGGTACCGAGGAGATCTGCC  
GCCGCGATCGCC

ATGAGGCTGAGAACCGGAAAGCTTCTCAGCAGTCAAATCAAATCCAACACAACGCACTGCCAGAGCAA  
AGAGGAAATATTCAGAGTTGATGATAGCTGCCTTCAGGAGGAGAAAAACCATCGAAGAATGAAACCGG  
CTTGTTGTCTCAATTAATAAATTTTAAAGGAAGCACACCTAAGGAAGAGAGAAAAATCCTTAAAA  
CGGAGTAGAATTGAACGTGATATAGATAACAATTTGATCACGTCAACACCAAGAGCAGGAGAAAAACCTA  
ACAAACAGATATCTCGAGTAAGACGAAAAAGTCAAGTAAATGGAGAAGCTGGTAGTTATGAAATGACAAA  
TCAACATGTAACAAAAATGAAAATTAGAAGATAATCCTTCTGCGCAGTCTCCAAGGACTACTTTG  
TTGGGGACCATATTTTCACTGTCTTCACTTTTTTTCCACAGCAATAAAAAATGGAACGTCAGGATCAG  
ATTCTCCAGGACAGGCTGTGGAAGCTGAAGAAATAGTAAACAACCTTGATATGGAACAGGTGGATGAGAT  
CACTACCACTACTACTACATCAACTAATGGAGCAGCTTACTCAAATCAAGCAGTTCAAGTGAGACCATCA  
CTAAACAATGGTTTAGAAGAAGCAGAAGAAACAGTTAATCGTGATATCCACCCCTTACAGCACCAGTAA  
CTCCAGATAGTGGTTATTCATCAGCCCACGCGGAGGCCACCTATGAAGAAGACTGGGAAGTATTTGACCC  
CTATTATTTTATCAAACATGTCCCGCCACTGACAGAAGAACAATAAGGAAACCTGCTCTTCCGTTG  
AAAACAAGAAGCACACCGGAATTCTCCCTAGTTTTAGACTTGGATGAAACACTAGTGCAATGTAGTCTAA  
ATGAGCTAGAAGATGCAGCACTACTTTTCCAGTCCTTTTCCAAGATGTCATTTATCAGGTTTATGTGAG  
ATTAAGACCATTTTTCAGGGAATTCCTGGAACGAATGTCTCAGATGTATGAGATCATTCTTTTTACTGCT  
TCTAAGAAGGTGTATGCAGACAAGTACTGAACATACTAGACCCTAAAAAGCAACTGGTCAGGCACCGGC  
TTTTCCGTGAACATTGTGTTGTGTACAAGGAACTATATAAGGACTTAAATATCTTGGAGAGATCT  
TTCAAAAACTATAATAATTGACAACTCACACAAGCCTTTGCATATCAGCTTTCTAATGGAATCCCTATA  
GAAAGTTGGTTTATGGATAAAAATGACAATGAACTCCTAAAATTGATTCCATTCTGGAGAGCTTGTAG  
AACTGAATGAAGATGTTGACCACACATCAGAGACAGATTTGCTTGCATGATTTGCTGCCCCAGAT

ACGCGTACGCGGCCGCTCGAGCAGAACTCATCTCAGAAGAGGATCTGGCAGCAAATGATATCCTGGATT  
ACAAGGATGACGACGATAAGGTTTAA

## Protein Sequence:

>RC207746 protein sequence  
Red=Cloning site Green=Tags(s)

MRLRTRKASQQSNQIQRTARAKRKYSEVDDSLPSGGEKPSKNETGLLSSIKKFIKSTPKEERENPSK  
RSRIERDIDNNLITSTPRAGEKPNKQISRVRRKSQVNGEAGSYEMTNQHVQKQNGKLEDNPSSGSPRRTL  
LGTIFSPVFNFFSPANKNGTSGSDSPGQAVEAEEIVKQLDMEQVDEITTTSTTNGAAYSQAVQVRPS  
LNNGLEEAEEETVNRDIPPLTAPVTPDSGYSSAHAEATYEEDWEVDFPYF IKHVPPLTEEQLNRKPALPL  
KTRSTPEFSLVLDLDELTVHCSLNELEDAALTFPVLFDQVIYQVYVRLRPFREFLERMSQMYEIIILFTA  
SKKVYADKLLNILDPKQLVRHRLFREHCVCVQNYIKDLNILGRDLSKTIIDNSPQAFAYQLSNGIPI  
ESWFMKNDNELLKLI PFLEKLVELNEDVRPHIRDRLHDLLPPD

TRTRPLEQKLISEEDLAANDILDYKDDDDKV

## Chromatograms:

[https://cdn.origene.com/chromatograms/mk6337\\_d08.zip](https://cdn.origene.com/chromatograms/mk6337_d08.zip)

## Restriction Sites:

Sgfl-Mlul

**Cloning Scheme:**


**ACCN:** NM\_016396

**ORF Size:** 1398 bp

**OTI Disclaimer:** The molecular sequence of this clone aligns with the gene accession number as a point of reference only. However, individual transcript sequences of the same gene can differ through naturally occurring variations (e.g. polymorphisms), each with its own valid existence. This clone is substantially in agreement with the reference, but a complete review of all prevailing variants is recommended prior to use. [More info](#)

**OTI Annotation:** This clone was engineered to express the complete ORF with an expression tag. Expression varies depending on the nature of the gene.

**Components:** The ORF clone is ion-exchange column purified and shipped in a 2D barcoded Matrix tube containing 10ug of transfection-ready, dried plasmid DNA (reconstitute with 100 ul of water).

- Reconstitution Method:**
1. Centrifuge at 5,000xg for 5min.
  2. Carefully open the tube and add 100ul of sterile water to dissolve the DNA.
  3. Close the tube and incubate for 10 minutes at room temperature.
  4. Briefly vortex the tube and then do a quick spin (less than 5000xg) to concentrate the liquid at the bottom.
  5. Store the suspended plasmid at -20°C. The DNA is stable for at least one year from date of shipping when stored at -20°C.

**RefSeq:** [NM\\_016396.3](#)

**RefSeq Size:** 4875 bp

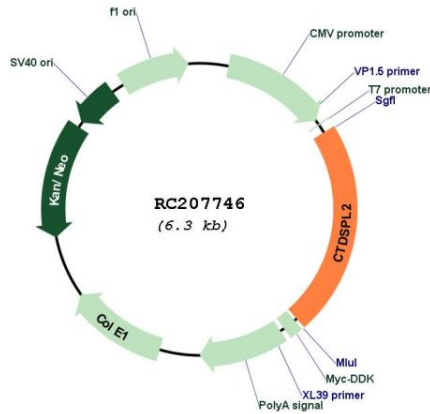
**RefSeq ORF:** 1401 bp

**Locus ID:** 51496

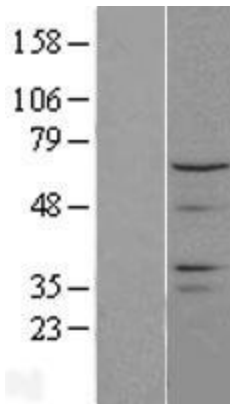
**UniProt ID:** [Q05D32](#)

**Cytogenetics:** 15q15.3-q21.1

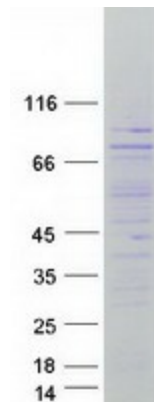
**Domains:** CPDc  
**MW:** 53 kDa  
**Gene Summary:** Probable phosphatase.[UniProtKB/Swiss-Prot Function]

**Product images:**


Circular map for RC207746



Western blot validation of overexpression lysate (Cat# [LY413996]) using anti-DDK antibody (Cat# [TA50011-100]). Left: Cell lysates from untransfected HEK293T cells; Right: Cell lysates from HEK293T cells transfected with RC207746 using transfection reagent MegaTran 2.0 (Cat# [TT210002]).



Coomassie blue staining of purified CTDSP2 protein (Cat# [TP307746]). The protein was produced from HEK293T cells transfected with CTDSP2 cDNA clone (Cat# RC207746) using MegaTran 2.0 (Cat# [TT210002]).