

Product datasheet for RC207742

ETV7 (NM_016135) Human Tagged ORF Clone

Product data:

Product Type:	Expression Plasmids
Product Name:	ETV7 (NM_016135) Human Tagged ORF Clone
Tag:	Myc-DDK
Symbol:	ETV7
Synonyms:	TEL-2; TEL2; TELB
Mammalian Cell Selection:	Neomycin
Vector:	pCMV6-Entry (PS100001)
E. coli Selection:	Kanamycin (25 ug/mL)
ORF Nucleotide Sequence:	>RC207742 ORF sequence Red=Cloning site Blue=ORF Green=Tags(s)

TTTTGTAATACGACTCACTATAGGGCGGCCGGAATTCGTCGACTGGATCCGGTACCGAGGAGATCTGCC
GCC**CGATCGCC**

ATG**CAGGAGGGAGAATTGGCTATTTCTCCTATAAGCCCTGTGGCAGCCATGCCTCCCCTAGGCACCCACG**
TGCAAGCCAGATGTGAAGCTCAAATTAACCTGCTGGGTGAAGGGGGATCTGCAAGCTGCCAGGAAGACT
CCGCATCCAGCCCGCACTGTGGAGCAGGGAGGACGTGCTGCCTGGCTGCGCTGGCAGAGCAGGAGTAC
TCTCTGCCATGCACCGCGGAGCACGGGTCGAGATGAACGGACGCGCCCTCTGCATCCTCACCAGGACG
ACTTCCGGCACCGTGCGCCAGCTCAGGTGACGTCTGTATGAGCTGCTCCAGTACATCAAGACCCAGCG
GCGAGCCCTGGTGTGTGGACCCTTTTTGGAGGGATCTTCAGGCTGAAGACGCCACCCAGCACTCTCCA
GTCCCCCGGAAGAGGTGACTGGCCCTCTCAGATGGACACCCGAAGGGGCCACCTGCTGCAGCCACCAG
ACCCAGGGCTTACCAGCAACTTCGGCCACCTGGATGACCTGGCCTGGCAAGGTGGACCCCTGGCAAGGA
GGAGTCCCTCAACTTATGTCACTGTGCAGAGCTCGGCTGCAGGACCCAGGGGTCTGTTCCTTCCCCGCG
ATGCCGCAGGCCCCATTGACGGCAGGATCGTGTACTGCCCTGCTGTGGGATTACGTGTATCAGCTGC
TCCTTGATACCCGATATGAGCCCTACATCAAGTGGGAAGACAAGGACGCCAAGATCTTCCGAGTTGTGA
TCCAAATGGGCTCGCCAGACTCTGGGAAATCACAAGAACCGGGTGAACATGACCTACGAGAAGATGTCT
CGTGCCCTGCGCCACTATTATAAGCTTAATATCATTAGAAGGAACCGGGCAGAACTCCTGTTTCAGAT
TTCTAAAGACTCCGGAAAGATGGTCCAGGACAAGCACAGCCACCTGGAGCCGCTGGAGAGCCAGGAGCA
GGACAGAATAGAGTTCAAGGACAAGAGGCCAGAAATCTCTCCG

ACGCGTACGCGGCCGCTCGAGCAGAACTCATCTCAGAAGAGGATCTGGCAGCAAATGATATCCTGGATT
ACAAGGATGACGACGATAAGGTTTAA



[View online »](#)

Protein Sequence: >RC207742 protein sequence
Red=Cloning site Green=Tags(s)

MQEGELAI SPIS PVAAMPPLGTHVQARCEAQINLLGEGGICKLPGRRLRIQPALWSREDVLHHLRWAEQY
 SLPCTAEHGFEMNGRALCILTKDDFRHRAPSSGDVLYELLQYIKTQRRALVCGPFFGGIFRLKPTQHS
 VPPEEVTGPSQMDTRRGHLLQPPDPGLTSNFGHLDDPGLARWTPGKEESLNLCHCAELGCRTQGVCSFPA
 MPQAPIDGRIADCRLLDWYVYQLLLDTRYEPYIKWEDKDAKIFRVVDPNGLARLWGNHKNRVMNTYEKMS
 RALRHYYKLNIIKKEPGQKLLFRFLKTPGKMVQDKHSHLEPLESQEQDRIEFKDKRPEISP

TRTRPLEQKLISEEDLAANDILDYKDDDDKV

Chromatograms: https://cdn.origene.com/chromatograms/mk6294_g04.zip

Restriction Sites: SgfI-MluI

Cloning Scheme:



ACCN: NM_016135

ORF Size: 1023 bp

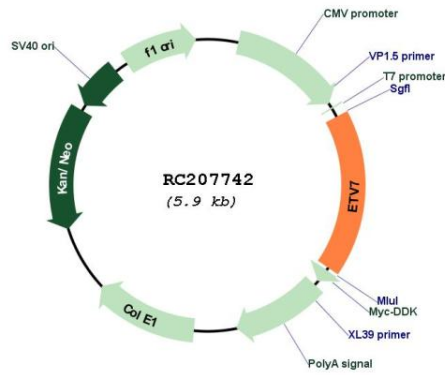
OTI Disclaimer: The molecular sequence of this clone aligns with the gene accession number as a point of reference only. However, individual transcript sequences of the same gene can differ through naturally occurring variations (e.g. polymorphisms), each with its own valid existence. This clone is substantially in agreement with the reference, but a complete review of all prevailing variants is recommended prior to use. [More info](#)

OTI Annotation: This clone was engineered to express the complete ORF with an expression tag. Expression varies depending on the nature of the gene.

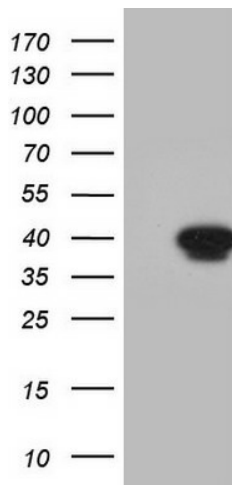
Components: The ORF clone is ion-exchange column purified and shipped in a 2D barcoded Matrix tube containing 10ug of transfection-ready, dried plasmid DNA (reconstitute with 100 ul of water).

Reconstitution Method:	<ol style="list-style-type: none">1. Centrifuge at 5,000xg for 5min.2. Carefully open the tube and add 100ul of sterile water to dissolve the DNA.3. Close the tube and incubate for 10 minutes at room temperature.4. Briefly vortex the tube and then do a quick spin (less than 5000xg) to concentrate the liquid at the bottom.5. Store the suspended plasmid at -20°C. The DNA is stable for at least one year from date of shipping when stored at -20°C.
Note:	Plasmids are not sterile. For experiments where strict sterility is required, filtration with 0.22um filter is required.
RefSeq:	NM_016135.2 , NP_057219.1
RefSeq Size:	1761 bp
RefSeq ORF:	1026 bp
Locus ID:	51513
UniProt ID:	Q9Y603
Cytogenetics:	6p21.31
Domains:	ETS, SAM_PNT, SAPA, SapB_1, SapB_2, SAPB
Protein Families:	Druggable Genome, Transcription Factors
Protein Pathways:	Dorso-ventral axis formation
MW:	39 kDa
Gene Summary:	The protein encoded by this gene belongs to the ETS family of transcription factors, which is a large group of evolutionarily conserved transcriptional regulators that play an important role in a variety of cellular processes throughout development and differentiation, and are involved in oncogenesis as well. This protein is predominantly expressed in hematopoietic tissues. Several alternatively spliced transcript variants encoding different isoforms have been described for this gene (PMID:11108721).[provided by RefSeq, May 2011]

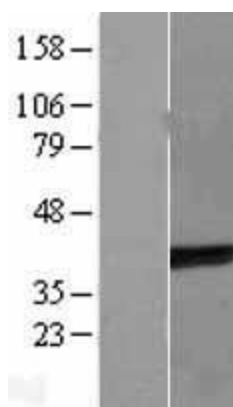
Product images:



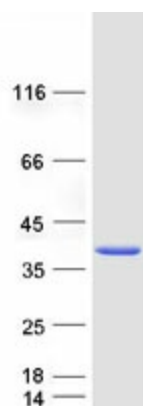
Circular map for RC207742



HEK293T cells were transfected with the pCMV6-ENTRY control (Cat# [PS100001], Left lane) or pCMV6-ENTRY ETV7 (Cat# RC207742, Right lane) cDNA for 48 hrs and lysed. Equivalent amounts of cell lysates (5 ug per lane) were separated by SDS-PAGE and immunoblotted with anti-ETV7(Cat# [TA803463]). Positive lysates [LY414164] (100ug) and [LC414164] (20ug) can be purchased separately from OriGene.



Western blot validation of overexpression lysate (Cat# [LY414164]) using anti-DDK antibody (Cat# [TA50011-100]). Left: Cell lysates from untransfected HEK293T cells; Right: Cell lysates from HEK293T cells transfected with RC207742 using transfection reagent MegaTran 2.0 (Cat# [TT210002]).



Coomassie blue staining of purified ETV7 protein (Cat# [TP307742]). The protein was produced from HEK293T cells transfected with ETV7 cDNA clone (Cat# RC207742) using MegaTran 2.0 (Cat# [TT210002]).