

## Product datasheet for **RC207732**

### **MTMR14 (NM\_001077525) Human Tagged ORF Clone**

#### **Product data:**

Product Type:	Expression Plasmids
Product Name:	MTMR14 (NM_001077525) Human Tagged ORF Clone
Tag:	Myc-DDK
Symbol:	MTMR14
Synonyms:	C3orf29
Mammalian Cell Selection:	Neomycin
Vector:	pCMV6-Entry (PS100001)
E. coli Selection:	Kanamycin (25 ug/mL)



[View online »](#)

**ORF Nucleotide  
Sequence:**

>RC207732 ORF sequence  
 Red=Cloning site Blue=ORF Green=Tags(s)

TTTTGTAATACGACTCACTATAGGGCGGCCGGGAATTCGTCGACTGGATCCGGTACCGAGGAGATCTGCC  
 GCC**CGGATCGCC**

ATGGCCGGCGCTCGGGCCGCCGCCCGCTGCCTCGGCGGGTCTCGGCCTCTTCAGGCAACCAGCCGC  
 CTCAGGAGCTGGGGCTTGGGGAGCTGCTGGAGGAGTTCTCCCGGACTCAGTACCGGGCCAAGGATGGCAG  
 CGGGACCGGGCGCTCTAAGGTTGAGCGCATTGAGAAGAGATGTCTGGAGCTGTTTGGCCGAGACTACTGT  
 TTCAGCGTGATTCCAAACACGAATGGGGATATCTGTGGCCACTATCCCGGCACATCGTGTTCCTGGAGT  
 ATGAGAGTTCTGAGAAGGAGAAAGACACGTTTGGAGTACCGTACAGGTGAGCAAGTTGCAAGACCTCAT  
 CCACCGCAGCAAGATGGCCCGTGCAGAGGACGGTTTGTCTGCCAGTAATCCTGTTCAAGGGCAAGCAC  
 ATTTGCAGGTGGCCCACTGGCTGGATGGGGAGAGCTGTATGGACGCTCAGGCTACAATATTTTTTCT  
 CAGGGGGTGCAGATGATGCCTGGGCAGATGTGGAGGACGTCACGGAGGAGGACTGTGCTCTTCGAAGTGG  
 TGACACGCATCTTTTGGATAAGGTCAGAGGCTATGACATCAAGCTGCTTCGATACCTGTCAAGTCAATAC  
 ATCTGTGACCTGATGGTGGAGAACAAGAAGGTGAAGTTTGGCATGAATGTAACTCCTCTGAGAAGTGG  
 ACAAAGCCAGCGCTATGCCGACTTCACTCTCCTCTCCATCCCGTATCCAGGCTGTGAATTTTTCAAGGA  
 ATATAAGATCGGGATTACATGGCAGAAGGGCTCATATTTAACTGGAAGCAGGACTACGTTGATGCCCA  
 TTGAGCATCCCGACTTCTGACTCACTCTCTGAACATTGACTGGAGCCAGTATCAGTGTGGGACTCG  
 TGCAACAAACACAAAACCTACCTGAAGCTGCTGCTTTCCTTAGTTAACAGTGATGATGACAGCGGGCTGCT  
 GGTACTGTATCTCAGGCTGGGATCGGACCCCTCTCATCTCCCTCTGCGCCTTTCCTTGTGGGCT  
 GATGGGCTCATCCACACGTCCTGAAGCCACTGAGATCCTCTACCTCACTGTGGCCTATGACTGGTTCC  
 TCTTCGGGCACATGTTGGTAGATCGGCTCAGCAAAGGGGAGGAGATTTTCTTCTTCTGCTTCAATTTTTT  
 GAAGCATATTACCTCCGAGGAGTTCTCTGCTCTGAAGACCCAGAGGAGGAAGAGTTTGCCAGCCCGGAT  
 GGAGGCTTACCCTGGAAGACATCTGCATGCTGAGACGAAAGGACCGTGGCAGCACCACCAGCCTTGGCA  
 GCGACTTCTCCCTGGTATGGAGAGTTCCCGAGGAGCCACTGGGAGCTTACCTATGAGGCCGTGGAGCT  
 GGTCCCAGCAGGAGCGCAACTCAGGCAGCTTGGAGGAAGAGCCACTCATCCTCTCCACAGAGTGCCTC  
 TGGAACCGGCCACAACCCTCAGAGGACCGCTTGCCTTCCAGCAGGGGCTGGCGGAAGCCAGGTCTTCCA  
 GCTCCTTCTCAAACCATTCTGATAACTTTTTCAGGATGGGTAGCAGTCCCCTGGAGGTCCCAAACC  
 CAGATCAGTGGACCATCCCCTGCCCGGATCCTCTCTCCACAGACTATGGCAGCTGGCAGATGGTAACG  
 GGCTGTGGCAGTATTCAGGAGCGGGCTGTCTGCACACAGACTCCTCTCTCCCTTTCAGCTTCCCGGATG  
 AGCTCCCTAACAGTTGTCTGCTTGCAGCCCTGAGTGATCGAGAGACTCGGCTGCAGGAGGTGCGCTCAGC  
 CTCTTGGCTGCGTACAGCAGCACAGTGGGGCTTCGGGCAGTAGCCCCAGTCTTCCGGTGCCATCGGG  
 GGCTGCTGGAGCAATTTGCCCGTGGTGTGGACTCCGGAGCATCAGCAGCAATGCCTTG

**ACGCGT**ACGCGGCCGCTCGAGCAGAAACTCATCTCAGAAGAGGATCTGGCAGCAATGATATCCTGGATT  
 ACAAGGATGACGACGATAAGGTTTAA



**Reconstitution Method:**

1. Centrifuge at 5,000xg for 5min.
2. Carefully open the tube and add 100ul of sterile water to dissolve the DNA.
3. Close the tube and incubate for 10 minutes at room temperature.
4. Briefly vortex the tube and then do a quick spin (less than 5000xg) to concentrate the liquid at the bottom.
5. Store the suspended plasmid at -20°C. The DNA is stable for at least one year from date of shipping when stored at -20°C.

**RefSeq:** [NM\\_001077525.3](#)

**RefSeq Size:** 2536 bp

**RefSeq ORF:** 1953 bp

**Locus ID:** 64419

**UniProt ID:** [Q8NCE2](#)

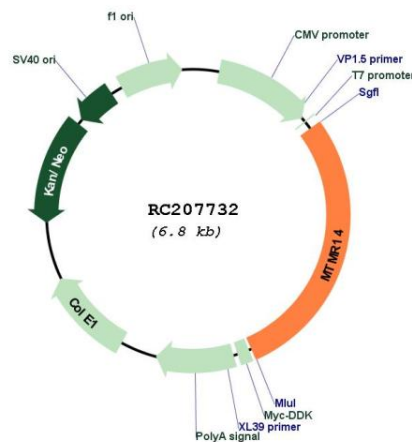
**Cytogenetics:** 3p25.3

**Protein Families:** Druggable Genome, Phosphatase, Secreted Protein

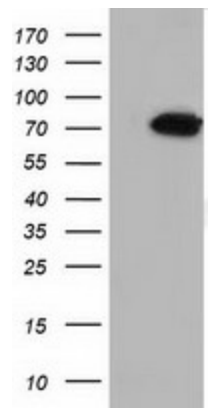
**MW:** 72.2 kDa

**Gene Summary:** This gene encodes a myotubularin-related protein. The encoded protein is a phosphoinositide phosphatase that specifically dephosphorylates phosphatidylinositol 3,5-biphosphate and phosphatidylinositol 3-phosphate. Mutations in this gene are correlated with autosomal dominant centronuclear myopathy. Alternate splicing results in multiple transcript variants. A pseudogene of this gene is found on chromosome 18.[provided by RefSeq, Apr 2010]

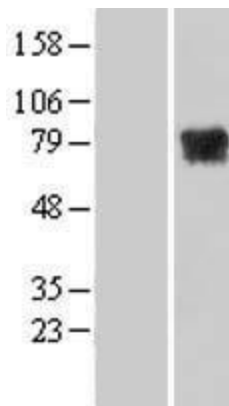
### Product images:



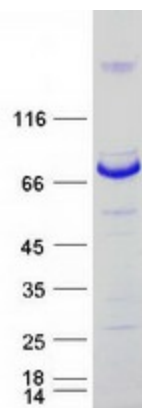
Circular map for RC207732



HEK293T cells were transfected with the pCMV6-ENTRY control (Cat# [PS100001], Left lane) or pCMV6-ENTRY MTMR14 (Cat# RC207732, Right lane) cDNA for 48 hrs and lysed. Equivalent amounts of cell lysates (5 ug per lane) were separated by SDS-PAGE and immunoblotted with anti-MTMR14(Cat# [TA501774]). Positive lysates [LY421457] (100ug) and [LC421457] (20ug) can be purchased separately from OriGene.



Western blot validation of overexpression lysate (Cat# [LY421457]) using anti-DDK antibody (Cat# [TA50011-100]). Left: Cell lysates from untransfected HEK293T cells; Right: Cell lysates from HEK293T cells transfected with RC207732 using transfection reagent MegaTran 2.0 (Cat# [TT210002]).



Coomassie blue staining of purified MTMR14 protein (Cat# [TP307732]). The protein was produced from HEK293T cells transfected with MTMR14 cDNA clone (Cat# RC207732) using MegaTran 2.0 (Cat# [TT210002]).