

Product datasheet for RC207731L1

CLCA2 (NM_006536) Human Tagged Lenti ORF Clone

Product data:

Product Type:	Expression Plasmids
Product Name:	CLCA2 (NM_006536) Human Tagged Lenti ORF Clone
Tag:	Myc-DDK
Symbol:	CLCA2
Synonyms:	CACC; CaCC-3; CACC3; CLCRG2
Mammalian Cell Selection:	None
Vector:	pLenti-C-Myc-DDK (PS100064)
E. coli Selection:	Chloramphenicol (34 ug/mL)
ORF Nucleotide Sequence:	The ORF insert of this clone is exactly the same as(RC207731).
Restriction Sites:	SgfI-MluI
Cloning Scheme:	

Cloning sites used for ORF Shuttling:



* The last codon before the Stop codon of the ORF.

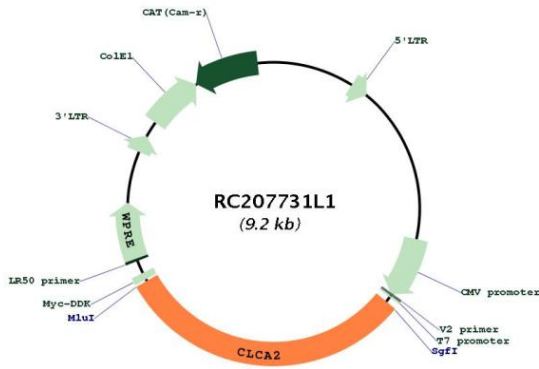
ACCN:	NM_006536
ORF Size:	2829 bp



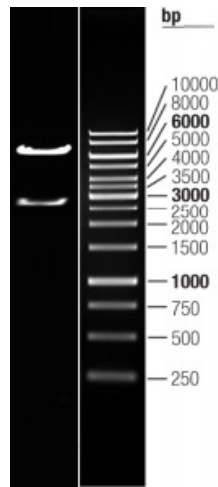
[View online >](#)

OTI Disclaimer:	The molecular sequence of this clone aligns with the gene accession number as a point of reference only. However, individual transcript sequences of the same gene can differ through naturally occurring variations (e.g. polymorphisms), each with its own valid existence. This clone is substantially in agreement with the reference, but a complete review of all prevailing variants is recommended prior to use. More info
OTI Annotation:	This clone was engineered to express the complete ORF with an expression tag. Expression varies depending on the nature of the gene.
Components:	The ORF clone is ion-exchange column purified and shipped in a 2D barcoded Matrix tube containing 10ug of transfection-ready, dried plasmid DNA (reconstitute with 100 ul of water).
Reconstitution Method:	<ol style="list-style-type: none">1. Centrifuge at 5,000xg for 5min.2. Carefully open the tube and add 100ul of sterile water to dissolve the DNA.3. Close the tube and incubate for 10 minutes at room temperature.4. Briefly vortex the tube and then do a quick spin (less than 5000xg) to concentrate the liquid at the bottom.5. Store the suspended plasmid at -20°C. The DNA is stable for at least one year from date of shipping when stored at -20°C.
RefSeq:	NM_006536.4
RefSeq Size:	4043 bp
RefSeq ORF:	2832 bp
Locus ID:	9635
UniProt ID:	Q9UQC9
Cytogenetics:	1p22.3
Domains:	VWA
Protein Families:	Druggable Genome, Ion Channels: Other, Transmembrane
Protein Pathways:	Olfactory transduction
MW:	103.9 kDa
Gene Summary:	This gene encodes a member of the calcium-activated chloride channel regulator (CLCR) family of proteins. Members of this family regulate the transport of chloride across the plasma membrane. The encoded protein is autoproteolytically processed to generate N- and C- terminal fragments. Expression of this gene is upregulated by the tumor suppressor protein p53 in response to DNA damage. In breast cancer, expression of this gene is downregulated and the encoded protein may inhibit migration and invasion while promoting mesenchymal-to-epithelial transition in cancer cell lines. [provided by RefSeq, Sep 2016]

Product images:



Circular map for RC207731L1



Double digestion of RC207731L1 using Sgfl and MluI