

Product datasheet for RC207729L4

EGFL6 (NM_015507) Human Tagged Lenti ORF Clone

Product data:

Product Type:	Expression Plasmids
Product Name:	EGFL6 (NM_015507) Human Tagged Lenti ORF Clone
Tag:	mGFP
Symbol:	EGFL6
Synonyms:	MAEG; W80
Mammalian Cell Selection:	Puromycin
Vector:	pLenti-C-mGFP-P2A-Puro (PS100093)
E. coli Selection:	Chloramphenicol (34 ug/mL)
ORF Nucleotide Sequence:	The ORF insert of this clone is exactly the same as(RC207729).
Restriction Sites:	SgfI-MluI
Cloning Scheme:	

Cloning sites used for ORF Shuttling:



* The last codon before the Stop codon of the ORF.

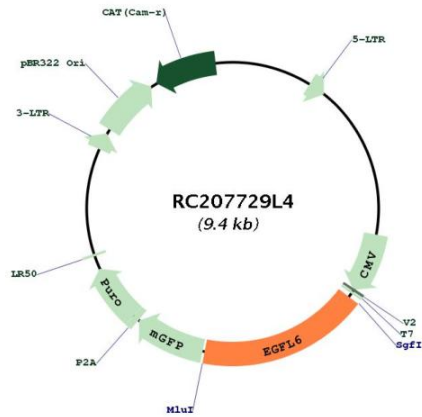
ACCN:	NM_015507
ORF Size:	1659 bp



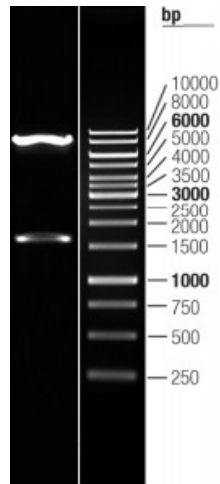
[View online »](#)

OTI Disclaimer:	The molecular sequence of this clone aligns with the gene accession number as a point of reference only. However, individual transcript sequences of the same gene can differ through naturally occurring variations (e.g. polymorphisms), each with its own valid existence. This clone is substantially in agreement with the reference, but a complete review of all prevailing variants is recommended prior to use. More info
OTI Annotation:	This clone was engineered to express the complete ORF with an expression tag. Expression varies depending on the nature of the gene.
Components:	The ORF clone is ion-exchange column purified and shipped in a 2D barcoded Matrix tube containing 10ug of transfection-ready, dried plasmid DNA (reconstitute with 100 ul of water).
Reconstitution Method:	<ol style="list-style-type: none">1. Centrifuge at 5,000xg for 5min.2. Carefully open the tube and add 100ul of sterile water to dissolve the DNA.3. Close the tube and incubate for 10 minutes at room temperature.4. Briefly vortex the tube and then do a quick spin (less than 5000xg) to concentrate the liquid at the bottom.5. Store the suspended plasmid at -20°C. The DNA is stable for at least one year from date of shipping when stored at -20°C.
RefSeq:	NM_015507.2
RefSeq Size:	2398 bp
RefSeq ORF:	1662 bp
Locus ID:	25975
UniProt ID:	Q8IUX8
Cytogenetics:	Xp22.2
Domains:	MAM, EGF_CA, EGF, EGF
Protein Families:	Druggable Genome
MW:	61.32 kDa
Gene Summary:	This gene encodes a member of the epidermal growth factor (EGF) repeat superfamily. Members of this superfamily are characterized by the presence of EGF-like repeats and are often involved in the regulation of cell cycle, proliferation, and developmental processes. The gene product contains a signal peptide, suggesting that it is secreted; an EGF repeat region consisting of 4 complete EGF-like repeats and 1 partial EGF-like repeat, 3 of which have a calcium-binding consensus sequence; an arg-gly-asp integrin association motif; and a MAM domain, which is believed to have an adhesive function. This gene is expressed early during development, and its expression has been detected in lung and meningioma tumors. [provided by RefSeq, Jul 2008]

Product images:



Circular map for RC207729L4



Double digestion of RC207729L4 using SgfI and MluI