

Product datasheet for **RC207725**

TM4SF20 (NM_024795) Human Tagged ORF Clone

Product data:

Product Type:	Expression Plasmids
Product Name:	TM4SF20 (NM_024795) Human Tagged ORF Clone
Tag:	Myc-DDK
Symbol:	TM4SF20
Synonyms:	PRO994; SLI5; TCCE518
Mammalian Cell Selection:	Neomycin
Vector:	pCMV6-Entry (PS100001)
E. coli Selection:	Kanamycin (25 ug/mL)
ORF Nucleotide Sequence:	>RC207725 ORF sequence Red=Cloning site Blue=ORF Green=Tags(s)

TTTTGTAATACGACTCACTATAGGGCGGCCGGAATTCGTCGACTGGATCCGGTACCGAGGAGATCTGCC
GCC**CGATCGCC**

ATGACCTGCTGCGAAGGATGGACATCCTGCAATGGATTGAGCCTGCTGGTTCTACTGCTGTTAGGAGTAG
TTCTCAATGTGATACCTCTAATTGTCAGCTTAGTTGAGGAAGACCAATTTCTCAAACCCCATCTCTTG
CTTTGAGTGGTGGTTCCAGGAATTATAGGAGCAGGTCTGATGGCCATTCCAGCAACAACAATGTCCTTG
ACAGCAAGAAAAAGAGCGTGTGCAACAACAGAACTGGAATGTTCTTTTCATCATTTTTTCAGTGTGATCA
CAGTCATTGGTGTCTGTATTGCATGCTGATATCCATCCAGGCTCTCTTAAAAGTCTCTCATGTGTAA
TTCTCCAAGCAACAGTAATGCCAATTGTGAATTTTCATTGAAAAACATCAGTGACATTATCCAGAATCC
TTCAACTTGCAAGTGGTTTTTCAATGACTCTTGTGCACCTCCTACTGGTTTCAATAAACCCACCAGTAACG
ACACCATGGCGAGTGGCTGGAGAGCATCTAGTTTCCACTTCGATTCTGAAGAAAAACAACATAGGCTTAT
CCACTTCTCAGTATTTTTAGGTCTATTGCTTGTGGAAATCTGGAGGTCCTGTTGGGCTCAGTCAGATA
GTCATCGGTTTCTTGGCTGTCTGTGTGGAGTCTCTAAGCGAAGAAGTCAAATTGTG

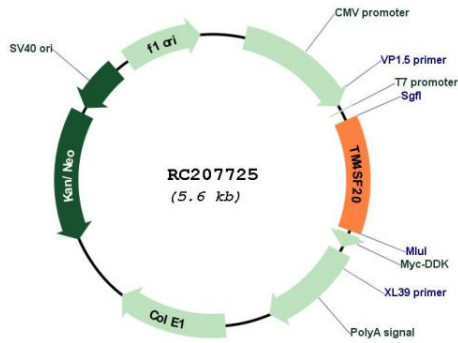
ACGCGTACGCGGCCGCTCGAGCAGAACTCATCTCAGAAGAGGATCTGGCAGCAAATGATATCCTGGATT
ACAAGGATGACGACGATAAGGTTTAA



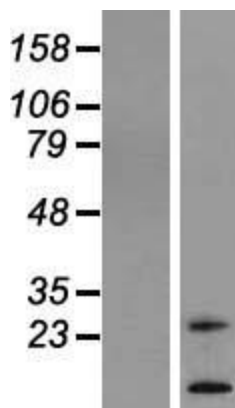
[View online »](#)

Components:	The ORF clone is ion-exchange column purified and shipped in a 2D barcoded Matrix tube containing 10ug of transfection-ready, dried plasmid DNA (reconstitute with 100 ul of water).
Reconstitution Method:	<ol style="list-style-type: none">1. Centrifuge at 5,000xg for 5min.2. Carefully open the tube and add 100ul of sterile water to dissolve the DNA.3. Close the tube and incubate for 10 minutes at room temperature.4. Briefly vortex the tube and then do a quick spin (less than 5000xg) to concentrate the liquid at the bottom.5. Store the suspended plasmid at -20°C. The DNA is stable for at least one year from date of shipping when stored at -20°C.
RefSeq:	NM_024795.4
RefSeq Size:	2310 bp
RefSeq ORF:	690 bp
Locus ID:	79853
UniProt ID:	Q53R12
Cytogenetics:	2q36.3
Protein Families:	Transmembrane
MW:	25.1 kDa
Gene Summary:	The protein encoded by this gene is a member of the four-transmembrane L6 superfamily. Members of this family function in various cellular processes including cell proliferation, motility, and adhesion via their interactions with integrins. In human brain tissue, this gene is expressed at high levels in the parietal lobe, occipital lobe, hippocampus, pons, white matter, corpus callosum, and cerebellum. Knockout of the homologous gene in mouse results in a neurobehavioral phenotype with suggested enhanced motor coordination. A deletion mutation in the human gene is associated with specific language impairment-5. [provided by RefSeq, Jul 2016]

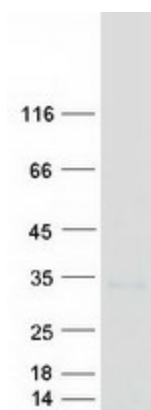
Product images:



Circular map for RC207725



Western blot validation of overexpression lysate (Cat# [LY411055]) using anti-DDK antibody (Cat# [TA50011-100]). Left: Cell lysates from untransfected HEK293T cells; Right: Cell lysates from HEK293T cells transfected with RC207725 using transfection reagent MegaTran 2.0 (Cat# [TT210002]).



Coomassie blue staining of purified TM4SF20 protein (Cat# [TP307725]). The protein was produced from HEK293T cells transfected with TM4SF20 cDNA clone (Cat# RC207725) using MegaTran 2.0 (Cat# [TT210002]).