

Product datasheet for **RC207720**

PSD2 (NM_032289) Human Tagged ORF Clone

Product data:

Product Type:	Expression Plasmids
Product Name:	PSD2 (NM_032289) Human Tagged ORF Clone
Tag:	Myc-DDK
Symbol:	PSD2
Synonyms:	EFA6C
Mammalian Cell Selection:	Neomycin
Vector:	pCMV6-Entry (PS100001)
E. coli Selection:	Kanamycin (25 ug/mL)



[View online »](#)

ORF Nucleotide Sequence:

>RC207720 ORF sequence
 Red=Cloning site Blue=ORF Green=Tags(s)

TTTTGTAATACGACTCACTATAGGGCGGCCGGGAATTCGTCGACTGGATCCGGTACCGAGGAGATCTGCC
 GCC**CGGATCGCC**

ATGGAGGAGGACAAGCTTTATCTGCAGTGCCTGAGGAAGGCGATGCCACCCGTGACCCCGTCCAGAGC
 CTGAAGAGGAGCCAGGGTCCGGAATGGGATGGCCAGTGAGGGCCCTGAACAGCAGCCTCTGCAGCCAGG
 GCACGAGCGAAGGGGCACCCAGCGGACACTGAGGAACCCACGAAGGACCCAGATGTGGCCTTCCATGGC
 CTCAGCCTTGGCCTCTCTCACCAATGGCCTAGCCCTGGGGCCAGACTTGAACATTCTGGAAGATTGAG
 CGGAGTCCAGGCCCTGGAGGGCTGGCGTCTGGCAGAGGGGGACAATGCTTCCAGGAGCCTTACCCAGA
 TGCTGAGGACCCCTCAGCTGGGGTTGGATGGTCCCAGGGGAGCCAGATGTGCGGGATGGCTTTCAGCGCCACG
 TTTGAGAAGATTCTGGAGTCAGAGCTGCTGCGGGGCACCCAGTACAGCAGCCTCGACTCCCTAGACGGGC
 TGAGCCTCACGGATGAGAGCGACAGCTGCGTCAGCTTCGAGGCCCCCTCACACCCCTCATCCAGCAGCG
 GGCCCGTGACAGCCCTGAGCCAGGGCTGGGTTGGGCATTGGGGACATGGCGTTTGGAGGGGACATGGGG
 GCGGCTGGTGGTATGGGGAGCTGGGCAGCCCTGCGGCGCTCCATCTCCAGCAGCCGCTCTGAGAATG
 TCCTGAGCCGCTGTCTCTCATGGCCATGCCCAATGGATTCCATGAAGATGGCCCTCAGGGCCAGGGGG
 GGATGAGGATGATGATGAGGAGGACACGGACAAGTTGCTGAACCTCAGCCAGTGACCCAGCCTGAAGGAT
 GGCTGTGAGACTCAGACTCTGAGCTCAGCAGCTCGGAGGGGTTGGAGCCTGGTAGTGACAGCCCTCTGG
 CCAACGGGTGCCAGGGGGTCAAGTGAAGTGTCTCATCGGCTGGCACGCCGTCTCTACCACCTCGAGGGCTT
 CCAGCGCTGTGATGTGGCCCGCAGCTGGGCAAGAACAACGAGTTTAGCAGGCTGGTGGCCGGGAGTAC
 CTCAGTTTCTCGACTTCTCGGGCTTACTCTGGACGGAGCACTCAGAACATTCTGAAGGCCTTCCCGC
 TGATGGGGGAGACACAAGAGCGTGAGCGGGTCTCACACACTTCTCCCGCGTACTGCCAGTGCAACCC
 TGATGACAGCACTTCGGAAGATGGGATCCACACGCTCACCTGTGCCCTGATGCTGCTCAACACGGACCTG
 CACGGCCACAACATTGGCAAAAAGATGTCTGTGCAATTCATTGCCAATTGGACCAGCTGAATGATG
 GCCAAGACTTTGCCAAAGACCTGCTGAAGACCCTTACAACCTCAAGAATGAAAAGCTGGAATGGGC
 CATTGATGAGGATGAGCTGAGGAAATCCCTGTCTGAGCTGGTGGATGACAAGTTCGGGACAGGCACGAAG
 AAGGTGACGCGAATCCTGGATGGTGGCAACCCCTTCTGGATGTCCACAGGCGCTCAGTGCCACCACCT
 ACAAGCACGGCGTCTGACCCGGAAGACTCACGCTGACATGGATGGCAAGAGGACGCCCCGTGGGAGGCG
 TGGCTGGAAGAAATTCTACGCAGTGTCAAAGGGACCATCCTGTACCTGCAGAAGGATGAGTACAGGCCT
 GACAAAGCTCTATCGGAGGGTGACCTGAAGAACGCCATTCGCGTGCATCACGCTCTGGCCACCAGGGCCT
 CTGACTACAGCAAGAAGTCCAACGTGCTGAAGCTTAAGACAGCCGACTGGAGGGTATTCCTCTCCAGGC
 ACCGAGCAAGGAAGAAATGCTGTCTGGATCCTCAGGATCAACCTGGTGGCAGCCATCTTCTTGCCCCG
 GCCTTCCAGCCGCTGTGAGCTCCATGAAGAAGTTCTGTGCGCCCTGCTGCCCTCTGCACCACCCGCC
 TCTGCCAGGAGGACAACTGCGGTCTCATGAGAATAAGTTGAGGCAGCTGACTGCGGAGCTGGCCGAACA
 CAGGTGTACCCAGTTCGAGAGGGGCATCAAGTCCAAGGAGGCCGAGGAGTACCGGTTGAAGGAGCACTAT
 CTCACCTTCGAGAAAAGCCGTTATGAGACCTATATCCACCTCCTGGCTATGAAAATCAAAGTGGGCTCAG
 ATGATCTGGAGCGGATTGAGGCCCGCTGGCCACTCTGGAAGGGGATGACCTTCTCTCCGGAAGACACA
 TTCAAGCCCTGCCCTCAGCCAGGGCCATGTGACTGGCAGCAAAACCACAAAGGATGCCACTGGGCCTGAT
 ACT

ACGCGTACGCGGCCGCTCGAGCAGAAACTCATCTCAGAAGAGGATCTGGCAGCAATGATATCCTGGATT
 ACAAGGATGACGACGATAAGGTTTAA

Protein Sequence: >RC207720 protein sequence
Red=Cloning site Green=Tags(s)

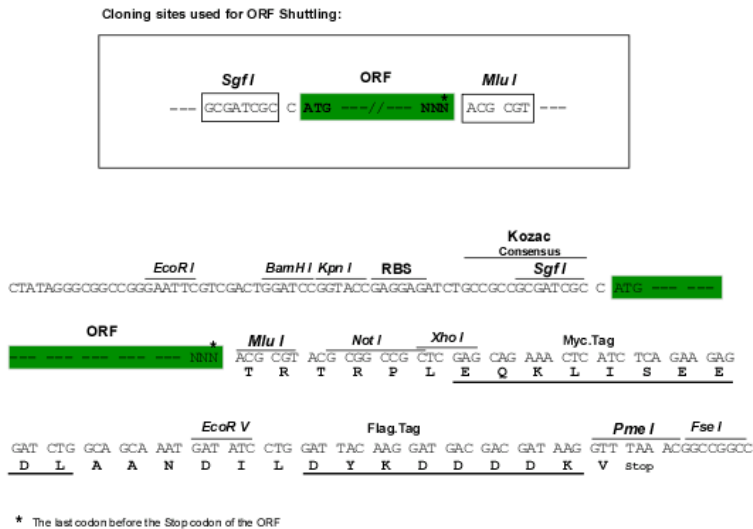
MEEDKLLSAVPEEGDATRDPGPEPEEPEGVRNGMASEGLNSSLCSPGHERRGTPADTEEPTKDPDVAFHG
LSLGLSLTNGLALGPDLNILEDSAESRPWRAGVLAEGDNASRSLYPDAEDPQLGLDGPGEVDVDRDGF SAT
FEKILESELLRGTQYSSLDLSDGLSLTDES DSCVSFEAPLTPLIQQRARDSPEPGAGLGIGDMAFEGDMG
AAGGDGELGSPLRRSISRSRSENVLSRLSLMAMPNGFHEDGPQGGDEDDDEEDTKLLNSADPSLKD
GLSDSDSELSSSEGLEPGSADPLANGCQGVSEAAHRLARRLYHLEGFQRCDVARQLGKNNF SRLVAGEY
LSFFDFSGLTLDGALRTFLKAFPLMGETQERERVLTHFSRRYCQCNPDSTSEDGIHTLTCALMLLNTDL
HGHNIGKKMSCQQFIANLDQLNDGQDFAKDLLKTLYNSIKNEKLEWAIDEDELRKSLSELVDDKFGTGK
KVTRILDGGNPF LDVPQAL SATTYKHGVLTRKTHADMDGKRTPRGRRGWKKFYAVLKGTILYLQKDEYRP
DKALSEGDLKNAIRVHHALATRASDYSKSNVLKKTADWRVFLFQAPSKEEMLSWILRINLVAAIFSAP
AFPAAVSSMKKFCRPLLPSCTTRLQEEQLRSHENKLRQLTAELAEHRCHPVERGIKSKEAEEYRLKEHY
LTFEKSRYETIYHLLAMKIKVGSDDLRIEARLATLEGDDPSLRKTHSSPALSQGHVTGSKTTKDATGPD
T

TRTRPLEQKLI SEEDLAANDILDYKDDDDKV

Chromatograms: https://cdn.origene.com/chromatograms/mk6790_c09.zip

Restriction Sites: Sgfl-Mlul

Cloning Scheme:



ACCN: NM_032289

ORF Size: 2313 bp

OTI Disclaimer: The molecular sequence of this clone aligns with the gene accession number as a point of reference only. However, individual transcript sequences of the same gene can differ through naturally occurring variations (e.g. polymorphisms), each with its own valid existence. This clone is substantially in agreement with the reference, but a complete review of all prevailing variants is recommended prior to use. [More info](#)

OTI Annotation: This clone was engineered to express the complete ORF with an expression tag. Expression varies depending on the nature of the gene.

Components: The ORF clone is ion-exchange column purified and shipped in a 2D barcoded Matrix tube containing 10ug of transfection-ready, dried plasmid DNA (reconstitute with 100 ul of water).

Reconstitution Method:

1. Centrifuge at 5,000xg for 5min.
2. Carefully open the tube and add 100ul of sterile water to dissolve the DNA.
3. Close the tube and incubate for 10 minutes at room temperature.
4. Briefly vortex the tube and then do a quick spin (less than 5000xg) to concentrate the liquid at the bottom.
5. Store the suspended plasmid at -20°C. The DNA is stable for at least one year from date of shipping when stored at -20°C.

RefSeq: [NM_032289.4](#)

RefSeq Size: 4527 bp

RefSeq ORF: 2316 bp

Locus ID: 84249

UniProt ID: [Q9BQI7](#)

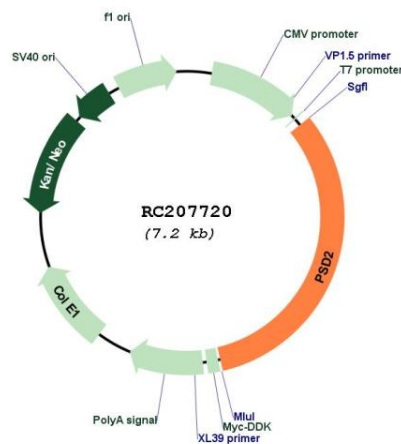
Cytogenetics: 5q31.2

Domains: Sec7, PH

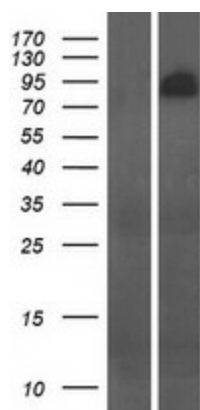
Protein Pathways: Endocytosis

MW: 84.7 kDa

Product images:



Circular map for RC207720



Western blot validation of overexpression lysate (Cat# [LY410232]) using anti-DDK antibody (Cat# [TA50011-100]). Left: Cell lysates from untransfected HEK293T cells; Right: Cell lysates from HEK293T cells transfected with RC207720 using transfection reagent MegaTran 2.0 (Cat# [TT210002]).