

## Product datasheet for **RC207717**

### PCDH1 (NM\_002587) Human Tagged ORF Clone

#### Product data:

Product Type:	Expression Plasmids
Product Name:	PCDH1 (NM_002587) Human Tagged ORF Clone
Tag:	Myc-DDK
Symbol:	PCDH1
Synonyms:	PC42; PCDH42
Vector:	pCMV6-Entry (PS100001)
E. coli Selection:	Kanamycin (25 ug/mL)
Cell Selection:	Neomycin
ORF Nucleotide Sequence:	>RC207717 ORF sequence Red=Cloning site Blue=ORF Green=Tags(s)

TTTTGTAATACGACTCACTATAGGGCGGCCGGAATTCGTCGACTGGATCCGGTACCGAGGAGATCTGCC  
GCC**CGATCGCC**

ATGGACAGCGGGCGGGCGGCCGGCTGCCCGGAGGCGGCCCTCCTGATTCTGGGGCTCCCAGGATGG  
AGCACCTGAGGCACAGCCAGGCCCTGGGGGCAACGGCTACTGCTGCCCTCCATGCTGCTAGCACTGCT  
GCTCCTGCTGGCTCCATCCCAGGCCACGCCACTCGGGTAGTGTACAAGGTGCCGGAGGAACAGCCACCC  
AACACCCTCATTGGGAGCCTCGCAGCCGACTATGGTTTTCCAGATGTGGGGCACCTGTACAAGCTAGAGG  
TGGGTGCCCGTACCTTCGCGTGGATGGCAAGACAGGTGACATTTTACCACCGAGACCTCCATCGACCG  
TGAGGGGCTCCGTGAATGCCAGAACCAGCTCCCTGGTGATCCCTGCATCCTGGAGTTTGAGGTATCTATC  
ACAGACCTCGTGCAAGATGGCAGCCCCGGCTGCTAGAGGGCCAGATAGAAGTACAAGACATCAATGACA  
ACACACCAACTTCGCCTCACCAGTCATCACTCTGGCCATCCCTGAGAACACCAACATCGGCTCACTCTT  
CCCCATCCCGTGGCTTCAGACCGTGATGCTGGTCCCAACGGTGTGGCATCCTATGAGCTGCAGGCTGGG  
CCTGAGGCCCAGGAGCTATTTGGGCTGCAGGTGGCAGAGGACCAGGAGGAGAAGCAACCACAGCTCATTG  
TGATGGCAACCTGGACCGTGAGCGCTGGGACTCCTATGACCTCACCATCAAGGTGCAGGATGGCGGCAG  
CCCCCACGCGCCAGCAGTGCCTGCTGCGTGTACCGTGTGACACCAATGACACGCCCCCAAGTTT  
GAGCGGCCCTCCTATGAGGCCGAATCTGAGAATAGCCCCATAGGCCACTCGGTCATCCAGGTGAAGG  
CCAATGACTCAGACCAAGGTGCCAATGCAGAAATCGAATACACATTCCACCAGGCGCCCGAAGTTGTGAG  
GCGTCTTCTTCGACTGGACAGGAACACTGGACTTATCACTGTTCAAGGCCCCGGTGGACCGTGAGGACCTA  
AGCACCTGCGCTTCTCAGTGCTTGCTAAGGACCGAGGCACCAACCCCAAGAGTGCCCGTGGCCAGGTGG  
TTGTGACCGTGAAGGACATGAATGACAATGCCCCACCATTGAGATCCGGGGCATAGGGCTAGTGACTCA  
TCAAGATGGGATGGCTAACATCTCAGAGGATGTGGCAGAGGAGACAGCTGTGCCCTGGTGCAGGTGCT  
GACCGAGATGAGGAGAGAATGCAGCTGTACCTGTGTGGTGGCAGGTGATGTGCCCTTCCAGCTGCGCC  
AGGCCAGTGAGACAGGCAGTGACAGCAAGAAGAAGTATTTCTGCAGACTACCACCCGCTAGACTACGA  
GAAGGTCAAAGACTACACCATTGAGATTGTGGCTGTGGACTCTGGCAACCCCACTCTCCAGCACTAAC  
TCCTCAAGGTGCAGGTGGTGGACGTCAATGACAACGCACCTGTCTTCACTCAGAGTGTCACTGAGGTGCG



CCTTCCCGGAAAACAACAAGCCTGGTGAAGTATTGCTGAGATCACTGCCAGTGATGCTGACTCTGGCTC  
 TAATGCTGAGCTGGTTTACTCTCTGGAGCCTGAGCCGGCTGCTAAGGGCCTCTTACCATCTCACCAG  
 ACTGGAGAGATCCAGGTGAAGACATCTCTGGATCGGGAACAGCGGGAGAGCTATGAGTTGAAGGTGGTGG  
 CAGCTGACCGGGGAGTCTAGCCTCCAGGGCACAGCCACTGTCTTGTCAATGTGCTGGACTGCAATGA  
 CAATGACCCCAAATTTATGCTGAGTGGCTACAACCTTCTCAGTGATGGAGAATGCCAGCACTGAGTCCA  
 GTGGGCATGGTACTGTATTGATGGAGACAAGGGGAGAGATGCCAGGTGCAGCTCTCAGTGGAGCAGG  
 ACAACCGTGACTTTGTTATCCAGAATGGCACAGGCACCATCTATCCAGCCTGAGCTTTGATCGAGAGCA  
 ACAAGCACCTACACCTTCCAGCTGAAGGCAGTGGATGGTGGCGTCCACCTCGCTCAGTTACGTTGGT  
 GTCACCATCAATGTGCTGGACGAGAATGACAACGCACCCTATATCACTGCCCTTCTAACACCTCTCACA  
 AGCTGCTGACCCCCAGACACGTCTTGGTGGAGCGGTGAGCCAGGTGGCAGCCGAGGACTTTGACTCTGG  
 TGTCAATGCCGAGCTGATCTACAGCATTGCAGGTGGCAACCCCTTATGGACTCTTCCAGATTGGGTACAT  
 TCAGGTGCCATCACCTGGAGAAGGAGATTGAGCGGCCACCATGGGCTACACCGCTGGTGGTGAAGG  
 TCAGTGACCGCGCAAGCCCCACGCTATGGCACAGCCTTGGTCCATCTTATGTCAATGAGACTCTGGC  
 CAACCGCACGCTGCTGGAGACCCTCTGGGCCACAGCCTGGACAGCCGCTGGATATTGACATTGCTGGG  
 GATCCAGAATATGAGCGCTCCAAGCAGCGTGGCAACATCTCTTGGTGTGGTGGCTGGTGTGGTGGCCG  
 TGGCCTTGCTCATCGCCCTGGCGTTCTTGTGCGCTACTGAGACAGCGGGAGGCCAAAAGTGGTTACCA  
 GGCTGGTAAAGAAGGAGACCAAGGACCTGTATGCCCCCAAGCCAGTGGCAAGGCCTCAAGGGAACAAA  
 AGCAAAGGCAAGAAGAGCAAGTCCCAAAGCCCGTGAAGCCAGTGGAGGACGAGGATGAGGCCGGCTGC  
 AGAAGTCCCTCAAGTTCAACCTGATGAGCGATGCCCTGGGGACAGTCCCGCATCCACCTGCCCTCAA  
 CTACCCACAGGCAGCCCTGACCTGGGCCGCCACTATCGCTCTAACTCCCCTGCTTCCATCCAGCTG  
 CAGCCCCAGTACCCTCAGCCTCCAAGAAGCACCAGGTGGTACAGGACCTGCCACCTGCAAAACATTTCG  
 TGGGCACCGGGGACACCAGTCCACGGGCTCTGAGCAGTACTCCGACTACAGTACCGCACCAACCCCC  
 CAAATACCCAGCAAGCAGGTAGGCCAGCCCTTCAGCTCAGCACACCCAGCCCTACCCACCCCTAC  
 CACGGAGCCATCTGGACCGAGGTGTGGAG

ACGCGTACGCGGCGCTCGAGCAGAACTCATCTCAGAAGAGGATCTGGCAGCAATGATATCCTGGATT  
 ACAAGGATGACGACGATAAGGTTTAA

**Protein Sequence:**

>RC207717 protein sequence  
 Red=Cloning site Green=Tags(s)

MDSGAGGRRCPPEAALLILGPPRMEHLRHSPGPGGQRLLLPSMLLALLLLLAPSPGHATRIVVYKVPPEEQPP  
 NTLIGSLAADYGFDPVGHLYKLEVGAPYLRVDGKTGDIFTTETSIDREGLRECQNQLPGDPCILEFEVSI  
 TDLVQNGSPRLLEGQIEVQDINDNTPNFASPVITLAIPTENTNIGSLFPIPLASDRDAGPNGVASYELQAG  
 PEAQELFGLQVAEDQEEKQPQLIVMGNLDRERWDSYDLTIKVQDGGSPRASSALLRVTVLDTNDNAPKF  
 ERPSYEAELSENSPIGHSVIQVKANDSDQGANAEIEYTFHQAPEVVRRLRLDRNTGLITVQGPVDREDL  
 STLRFSVLAKDRGTPNPKSARAQVVVTVKDMNDNAPTIEIRGIGLVTHQDGMANISEDVAETAVALVQVS  
 DRDEGENAAVTCCVAGDVFPQLRQASETGSDSKKYLQTTTPLDYEKVKDYTIEIVAVDSGNPPLSSTN  
 SLKVQVVDVNDNAPVFTQSVTEVAFPENNKPGEVIAEITASDADSGSNAELVYSLEPEPAAKGLFTISPE  
 TGEIQVKTSLDREQRESYELKVVAADRGSPLQGTATVLVNVLDCNDNDPKFMLSIGNYFVSMENMPALSP  
 VGMVTVIDGDKGENAQVQLSVEQDNGDFVIQNGTGTILSSLSFDREQQSTYTFQLKAVDGGVPPRSAYVG  
 VTINVLDENDNAPYITAPSNTSHKLLTPQTRLGETVVSQVAEDFDSGVNAELIYSIAGGNPYGLFQIGSH  
 SGAITLEKEIERRHHGLHRLVVKVSDRGKPPRYGTALVHLVYNETLANRLLLETLLGHSLDTPLDIDIA  
 DPEYERSKQRGNILFGVVAGVVAVALLIALAVLVRYCRQREAKSGYQAGKTKDLYAPKPSGKASKGNK  
 SKGKSKSPKPVKPVVEDEEAGLQKSLKFNLMSDAPGDSPIHLPLNYPGSPDLGRHYRSNSPLPSIQL  
 QPQSPSASKKHQVVQDLPPANTFVGTGDTTSTGSEQYSDYSYRTNPPKYPKQVQVQPFQLSTPQLPHPY  
 HGAIWTEVWE

TRTRPLEQKLISEEDLAANDILDYKDDDDKV

**Chromatograms:**

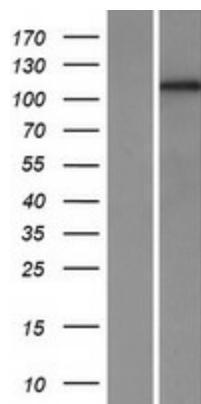
[https://cdn.origene.com/chromatograms/mk6819\\_b10.zip](https://cdn.origene.com/chromatograms/mk6819_b10.zip)

**Restriction Sites:**

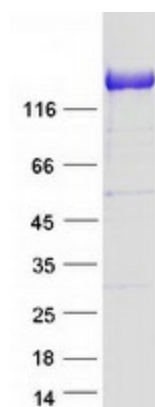
SgfI-MluI



<b>OTI Disclaimer:</b>	<p>Due to the inherent nature of this plasmid, standard methods to replicate additional amounts of DNA in E. coli are highly likely to result in mutations and/or rearrangements. Therefore, OriGene does not guarantee the capability to replicate this plasmid DNA. Additional amounts of DNA can be purchased from OriGene with batch-specific, full-sequence verification at a reduced cost. Please contact our customer care team at <a href="mailto:custsupport@origene.com">custsupport@origene.com</a> or by calling 301.340.3188 option 3 for pricing and delivery.</p> <p>The molecular sequence of this clone aligns with the gene accession number as a point of reference only. However, individual transcript sequences of the same gene can differ through naturally occurring variations (e.g. polymorphisms), each with its own valid existence. This clone is substantially in agreement with the reference, but a complete review of all prevailing variants is recommended prior to use. <a href="#">More info</a></p>
<b>OTI Annotation:</b>	This clone was engineered to express the complete ORF with an expression tag. Expression varies depending on the nature of the gene.
<b>Components:</b>	The ORF clone is ion-exchange column purified and shipped in a 2D barcoded Matrix tube containing 10ug of transfection-ready, dried plasmid DNA (reconstitute with 100 ul of water).
<b>Reconstitution Method:</b>	<ol style="list-style-type: none"> <li>1. Centrifuge at 5,000xg for 5min.</li> <li>2. Carefully open the tube and add 100ul of sterile water to dissolve the DNA.</li> <li>3. Close the tube and incubate for 10 minutes at room temperature.</li> <li>4. Briefly vortex the tube and then do a quick spin (less than 5000xg) to concentrate the liquid at the bottom.</li> <li>5. Store the suspended plasmid at -20°C. The DNA is stable for at least one year from date of shipping when stored at -20°C.</li> </ol>
<b>RefSeq:</b>	<a href="#">NM_002587.5</a>
<b>RefSeq Size:</b>	3845 bp
<b>RefSeq ORF:</b>	3183 bp
<b>Locus ID:</b>	5097
<b>UniProt ID:</b>	<a href="#">Q08174</a>
<b>Cytogenetics:</b>	5q31.3
<b>Domains:</b>	CA
<b>Protein Families:</b>	Transcription Factors, Transmembrane
<b>MW:</b>	114.7 kDa
<b>Gene Summary:</b>	<p>This gene belongs to the protocadherin subfamily within the cadherin superfamily. The encoded protein is a membrane protein found at cell-cell boundaries. It is involved in neural cell adhesion, suggesting a possible role in neuronal development. The protein includes an extracellular region, containing 7 cadherin-like domains, a transmembrane region and a C-terminal cytoplasmic region. Cells expressing the protein showed cell aggregation activity. Alternative splicing occurs in this gene. [provided by RefSeq, Jul 2008]</p>

**Product images:**

Western blot validation of overexpression lysate (Cat# [LY419227]) using anti-DDK antibody (Cat# [TA50011-100]). Left: Cell lysates from untransfected HEK293T cells; Right: Cell lysates from HEK293T cells transfected with RC207717 using transfection reagent MegaTran 2.0 (Cat# [TT210002]).



Coomassie blue staining of purified PCDH1 protein (Cat# [TP307717]). The protein was produced from HEK293T cells transfected with PCDH1 cDNA clone (Cat# RC207717) using MegaTran 2.0 (Cat# [TT210002]).