

Product datasheet for RC207709

G CSF (CSF3) (NM_172220) Human Tagged ORF Clone

Product data:

| | |
|---------------------------|---|
| Product Type: | Expression Plasmids |
| Product Name: | G CSF (CSF3) (NM_172220) Human Tagged ORF Clone |
| Tag: | Myc-DDK |
| Symbol: | G CSF |
| Synonyms: | C17orf33; CSF3OS; GCSF |
| Mammalian Cell Selection: | Neomycin |
| Vector: | pCMV6-Entry (PS100001) |
| E. coli Selection: | Kanamycin (25 ug/mL) |
| ORF Nucleotide Sequence: | >RC207709 ORF sequence Red=Cloning site Blue=ORF Green=Tags(s) |

TTTTGTAATACGACTCACTATAGGGCGGCCGGAATTCGTCGACTGGATCCGGTACCGAGGAGATCTGCC
 GCCGCGATCGCC

ATGTCTCCTGAGCCCGCTCTGTCCCCAGCCCTGCAGCTGCTGCTGTGGCACAGTGCACTCTGGACAGTGC
 AGGAAGCCACCCCTGGGCCCTGCCAGCTCCCTGCCCCAGAGCTTCTGCTCAAGTGCTTAGAGCAAGT
 GAGGAAGATCCAGGGCGATGGCGCAGCGCTCCAGGAGAAGCTGTGTGCCACCTACAAGCTGTGCCACCCC
 GAGGAGCTGGTGTGCTCGGACACTCTCTGGGCATCCCCTGGGCTCCCCTGAGCAGCTGCCCCAGCCAGG
 CCCTGCAGCTGGCAGGCTGCTTGAGCCAACTCCATAGCGGCCCTTTCTCTACCAGGGGCTCCTGCAGGC
 CCTGGAAGGGATCTCCCCGAGTTGGGTCCACCTTGGACACACTGCAGCTGGACGTGCGCGACTTTGCC
 ACCACCATCTGGCAGCAGATGGAAGAACTGGGAATGGCCCTGCCCTGCAGCCCCCAGGGTGCCATGC
 CGGCCTTCGCCTCTGCTTCCAGCGCCGGGCAGGAGGGGTCTGGTTGCCTCCCATCTGCAGAGCTTCT
 GGAGGTGTCTGACCGGTTCTACGCCACCTTGCCAGCCC

ACGCGTACGCGGCCGCTCGAGCAGAACTCATCTCAGAAGAGGATCTGGCAGCAAATGATATCCTGGATT
 ACAAGGATGACGACGATAAGGTTTAA

| | |
|-------------------|--|
| Protein Sequence: | >RC207709 protein sequence Red=Cloning site Green=Tags(s) |
|-------------------|--|

MSPEPALSPALQLLLWHSALWTVQEATPLGPASSLPQSFLKCLEQVRKIQGDGAALQEKLCAATYKLC
 EELVLLGHSLGIPWAPLSSCPQALQLAGCLSQLHSGFLYQGLLQALEGISPELGPTLDLQLDVADFA
 TTIWQMEELGMAPALQPTQGAMPAFASAFQRRAGGVLVASHLQSFLEVSRYRVLRLHAQP

TRTRPLEQKLISEEDLAANDILDYKDDDDKV


[View online »](#)

Chromatograms: https://cdn.origene.com/chromatograms/mk6143_d01.zip

Restriction Sites: SgfI-MluI

Cloning Scheme:



ACCN: NM_172220

ORF Size: 600 bp

OTI Disclaimer: The molecular sequence of this clone aligns with the gene accession number as a point of reference only. However, individual transcript sequences of the same gene can differ through naturally occurring variations (e.g. polymorphisms), each with its own valid existence. This clone is substantially in agreement with the reference, but a complete review of all prevailing variants is recommended prior to use. [More info](#)

OTI Annotation: This clone was engineered to express the complete ORF with an expression tag. Expression varies depending on the nature of the gene.

Components: The ORF clone is ion-exchange column purified and shipped in a 2D barcoded Matrix tube containing 10ug of transfection-ready, dried plasmid DNA (reconstitute with 100 ul of water).

Reconstitution Method:

1. Centrifuge at 5,000xg for 5min.
2. Carefully open the tube and add 100ul of sterile water to dissolve the DNA.
3. Close the tube and incubate for 10 minutes at room temperature.
4. Briefly vortex the tube and then do a quick spin (less than 5000xg) to concentrate the liquid at the bottom.
5. Store the suspended plasmid at -20°C. The DNA is stable for at least one year from date of shipping when stored at -20°C.

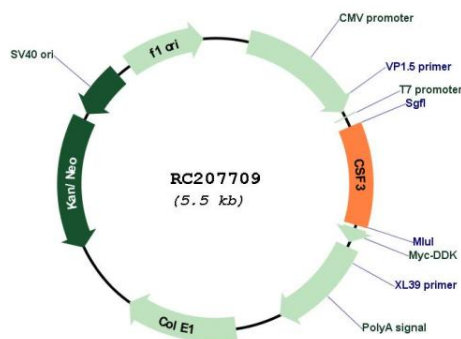
Note: Plasmids are not sterile. For experiments where strict sterility is required, filtration with 0.22um filter is required.

RefSeq: [NM_172220.1](#), [NP_757374.1](#)

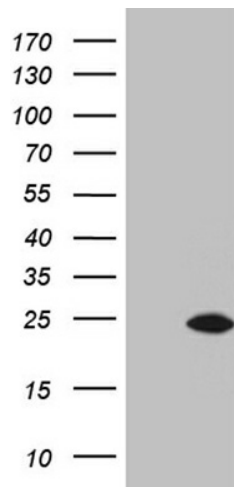
RefSeq Size: 1494 bp

| | |
|-------------------|---|
| RefSeq ORF: | 516 bp |
| Locus ID: | 1440 |
| UniProt ID: | P09919 |
| Cytogenetics: | 17q21.1 |
| Protein Families: | Druggable Genome, ES Cell Differentiation/IPS, Secreted Protein |
| Protein Pathways: | Cytokine-cytokine receptor interaction, Hematopoietic cell lineage, Jak-STAT signaling pathway |
| MW: | 21.5 kDa |
| Gene Summary: | This gene encodes a member of the IL-6 superfamily of cytokines. The encoded cytokine controls the production, differentiation, and function of granulocytes. Granulocytes are a type of white blood cell that are part of the innate immune response. A modified form of this protein is commonly administered to manage chemotherapy-induced neutropenia. Alternatively spliced transcript variants have been described for this gene. [provided by RefSeq, May 2020] |

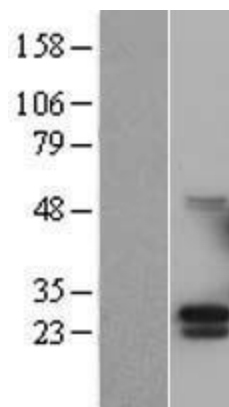
Product images:



Circular map for RC207709



HEK293T cells were transfected with the pCMV6-ENTRY control (Cat# [PS100001], Left lane) or pCMV6-ENTRY CSF3 (Cat# RC207709, Right lane) cDNA for 48 hrs and lysed. Equivalent amounts of cell lysates (5 ug per lane) were separated by SDS-PAGE and immunoblotted with anti-CSF3 (Cat# [TA810788])(1:2000). Positive lysates [LY403533] (100ug) and [LC403533] (20ug) can be purchased separately from OriGene.



Western blot validation of overexpression lysate (Cat# [LY403533]) using anti-DDK antibody (Cat# [TA50011-100]). Left: Cell lysates from untransfected HEK293T cells; Right: Cell lysates from HEK293T cells transfected with RC207709 using transfection reagent MegaTran 2.0 (Cat# [TT210002]).



Coomassie blue staining of purified CSF3 protein (Cat# [TP307709]). The protein was produced from HEK293T cells transfected with CSF3 cDNA clone (Cat# RC207709) using MegaTran 2.0 (Cat# [TT210002]).