

Product datasheet for RC207708L1

MBD1 (NM_015844) Human Tagged Lenti ORF Clone

Product data:

Product Type:	Expression Plasmids
Product Name:	MBD1 (NM_015844) Human Tagged Lenti ORF Clone
Tag:	Myc-DDK
Symbol:	MBD1
Synonyms:	CXXC3; PCM1; RFT
Mammalian Cell Selection:	None
Vector:	pLenti-C-Myc-DDK (PS100064)
E. coli Selection:	Chloramphenicol (34 ug/mL)
ORF Nucleotide Sequence:	The ORF insert of this clone is exactly the same as(RC207708).
Restriction Sites:	SgfI-MluI
Cloning Scheme:	

Cloning sites used for ORF Shuttling:



* The last codon before the Stop codon of the ORF.

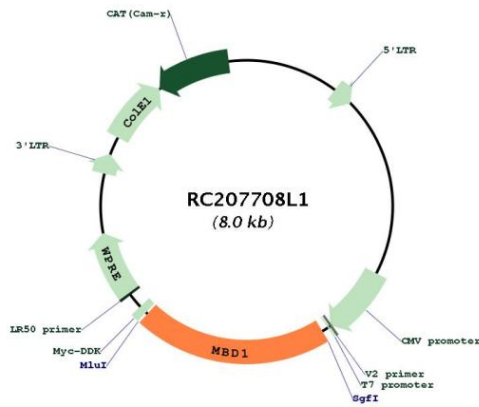
ACCN:	NM_015844
ORF Size:	1647 bp



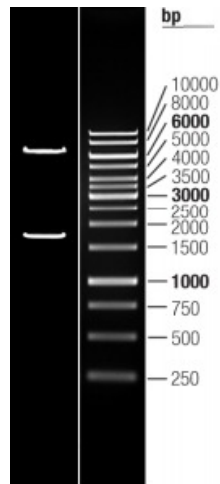
[View online »](#)

OTI Disclaimer:	The molecular sequence of this clone aligns with the gene accession number as a point of reference only. However, individual transcript sequences of the same gene can differ through naturally occurring variations (e.g. polymorphisms), each with its own valid existence. This clone is substantially in agreement with the reference, but a complete review of all prevailing variants is recommended prior to use. More info
OTI Annotation:	This clone was engineered to express the complete ORF with an expression tag. Expression varies depending on the nature of the gene.
Components:	The ORF clone is ion-exchange column purified and shipped in a 2D barcoded Matrix tube containing 10ug of transfection-ready, dried plasmid DNA (reconstitute with 100 ul of water).
Reconstitution Method:	<ol style="list-style-type: none">1. Centrifuge at 5,000xg for 5min.2. Carefully open the tube and add 100ul of sterile water to dissolve the DNA.3. Close the tube and incubate for 10 minutes at room temperature.4. Briefly vortex the tube and then do a quick spin (less than 5000xg) to concentrate the liquid at the bottom.5. Store the suspended plasmid at -20°C. The DNA is stable for at least one year from date of shipping when stored at -20°C.
RefSeq:	NM_015844.1
RefSeq Size:	2793 bp
RefSeq ORF:	1650 bp
Locus ID:	4152
UniProt ID:	Q9UIS9
Cytogenetics:	18q21.1
Protein Families:	Druggable Genome, Transcription Factors
MW:	59.8 kDa
Gene Summary:	The protein encoded by this gene is a member of a family of nuclear proteins related by the presence of a methyl-CpG binding domain (MBD). These proteins are capable of binding specifically to methylated DNA, and some members can also repress transcription from methylated gene promoters. This protein contains multiple domains: MBD at the N-terminus that functions both in binding to methylated DNA and in protein interactions; several CXXC-type zinc finger domains that mediate binding to non-methylated CpG dinucleotides; transcriptional repression domain (TRD) at the C-terminus that is involved in transcription repression and in protein interactions. Numerous alternatively spliced transcript variants encoding different isoforms have been noted for this gene.[provided by RefSeq, Feb 2011]

Product images:



Circular map for RC207708L1



Double digestion of RC207708L1 using SgfI and MluI