

Product datasheet for **RC207708**

MBD1 (NM_015844) Human Tagged ORF Clone

Product data:

Product Type:	Expression Plasmids
Product Name:	MBD1 (NM_015844) Human Tagged ORF Clone
Tag:	Myc-DDK
Symbol:	MBD1
Synonyms:	CXXC3; PCM1; RFT
Mammalian Cell Selection:	Neomycin
Vector:	pCMV6-Entry (PS100001)
E. coli Selection:	Kanamycin (25 ug/mL)



[View online »](#)

ORF Nucleotide Sequence:

>RC207708 representing NM_015844
 Red=Cloning site Blue=ORF Green=Tags(s)

TTTTGTAATACGACTCACTATAGGGCGGCCGGGAATTCGTCGACTGGATCCGGTACCGAGGAGATCTGCC
 GCC**CGGATCGCC**

ATGGCTGAGGACTGGCTGGACTGCCCGCCCTGGCCCTGGCTGGAAGCGCCGCAAGTCTTTCGAAGT
 CAGGGGCCACCTGTGGACGCTCAGACACCTATTACCAGAGCCCCACAGGAGACAGGATCCGAAGCAAAGT
 TGAGCTGACTCGATACCTGGGCCCTGCGTGTGATCTCACCTCTTCGACTTCAAACAAGGATCTTGTGC
 TATCCAGCCCCAAGGCCATCCCGTGGCGGTTGCCAGCAAGAAGCGAAAGAAGCCTTCAAGGCCAGCCA
 AGACTCGAAACGTCAAGTTGGACCCAGAGTGGTGGAGTCAAGGAGGAGGCCCCGAGGGATGAGACCAA
 GGCTGACACTGACACAGCCCCAGCTTCATTCCCTGCTCCTGGGTGCTGTGAGAACTGTGGAATCAGTTC
 TCAGGGGATGGCACCCAAAGGCAGCGGCTCAAACGTTGTCAAAGACTGTGAGCACAGAGAATTGCCT
 TCAACCGGAACAGAGAATGTTAAGCGTGTGGGCTGTGGGAGTGTGCAGCCTGCCAGGTAACAGAAGA
 CTGTGGGGCTGCTCCACTGCCTCCTGCAGCTGCCCCATGATGTGGCATCGGGGCTGTTCTGCAAGTGT
 GAACGGAGACGCTGCCTCCGATTGTGGAAGGAGCCGAGGGTGTGGAGTATGCCGGGGCTGTGAGACCC
 AAGAGGATTGTGGCCATTGCCCATCTGCCTTCGCCCTCCCCGCCCTGGTCTCAGGCGCCAGTGGAAATG
 TGTCCAGCGACGTTGCCTACGGGGTAAACATGCCCGCCGCAAGGGAGGCTGTGACTCCAAGATGGCTGCC
 AGGCGGCGCCCCGGAGGCCAGCCACTGCCTCCACCACCCCATCACAGTCCCCAGAGCCCACAGAGCCGC
 ACCCCAGAGCCCTGGCCCCCTCGCCACCTGCCGAGTTCATCTATTACTGTGTAGACGAGGACGAGCTAAA
 GCGGCTGCTGCCAGTGTCTGGTCAAGTCTGAGGATGGGGCAGGATCGCCCCACCTTACCCTCGTCA
 AAGAGGCCAGCTCTGCCGACGGCACCATCTTGGCCCTACCTTGAAGCCACCTTGGCTACACGCACAG
 CCCAACAGACCATAACAGGCTCAACAGAGGAGGAGGAGGAGGAGGAGGAGGAGGAGGAGGAGGAGGAG
 CACTGACCTTGTGTTTTACGGGAAGGCCAAGCAGTCCCTGTGCAGGTGCCGGGCCCTGTTGCAGCTTCC
 ACAGAAGCCCTGTGAGGAGGCCAGTCTGCTGCTGAGTTGGGTTGTGGCCTTACCCAGGTGAAGC
 AAGAGAAGGCGGATACCCAGGACGAGTGGACACCAGGCACAGCTGTCTGACTTCTCCCGTATTGGTGC
 TGGCTGCCCTAGCAAGGCAGTAGACCCAGGCTGCCTTCTGTGAAGCAAGAGCCACTGACCCAGAGGAG
 GACAAGGAGGAGAACAAGGATGATTCTGCCTCAAATTGGCCCCAGAGGAAGAGGAGGAGGAGGAGGAGG
 CACCCGTGATCACGGAGATTTTCAGCCTGGGTGGAACCCGCTCCGAGATACAGCAGTCTGGTTGCCAAG
 GTCCAAAGACCTAAAAAACCTGGAGCTAGAAAGCAG

ACGCGTACGCGGCCGCTCGAGCAGAAACTCATCTCAGAAGAGGATCTGGCAGCAAATGATATCCTGGATT
 ACAAGGATGACGACGATAAGGTTTAA

Protein Sequence:

>RC207708 representing NM_015844
 Red=Cloning site Green=Tags(s)

MAEDWLDPCALGPGWKRREVFRKSGATCGRSDTYYSPTGDRIRSKVELTRYLGPACDLTLDFKQGIILC
 YPAPKAHPVAVASKRKRKPSRPAKTRKRQVGPQSGEVRKEAPRDETKADTDAPASFPAPGCCENCGISF
 SGDGTQRQRLKTLCKDCRAQRIAFNREQRMFKRVGCGECAACQVTEDCGACSTCLLQLPHDVASGLFKC
 ERRRCLRIVERSRGCVCRCQQTQEDCGHCPICLRPPRPLRRQWKCVQRRCLRGKHARRKGGCDKMAA
 RRRPGAQPLPPPPPSQSPEPTEPHRALAPSPPAEFIYYCVDEDELKRLLPVWSESEDGAGSPPPYRRR
 KRPSSARRHHLGPTLKPTLATRQAQPDHTQAPTKQEAGGGFVLPPTGDLVFLREGASSPVQVPGPVAAS
 TEALLQEAQCSGLSWVVALPQVKQEKADTQDEWTPGTAVLTSVLPVPGCPSKAVDPGLPSVKQEPDPPEE
 DKEENKDSASKLAPEEEAGGAGTPVITEIFSLGGTRFRDTAVWLPRSKDLKPKGARKQ

TRTRPLEQKLISEEDLAANDILDYKDDDDKV

Chromatograms:

https://cdn.origene.com/chromatograms/mg4783_h05.zip

Restriction Sites:

Sgfl-MluI

Cloning Scheme:


ACCN: NM_015844

ORF Size: 1647 bp

OTI Disclaimer: The molecular sequence of this clone aligns with the gene accession number as a point of reference only. However, individual transcript sequences of the same gene can differ through naturally occurring variations (e.g. polymorphisms), each with its own valid existence. This clone is substantially in agreement with the reference, but a complete review of all prevailing variants is recommended prior to use. [More info](#)

OTI Annotation: This clone was engineered to express the complete ORF with an expression tag. Expression varies depending on the nature of the gene.

Components: The ORF clone is ion-exchange column purified and shipped in a 2D barcoded Matrix tube containing 10ug of transfection-ready, dried plasmid DNA (reconstitute with 100 ul of water).

- Reconstitution Method:**
1. Centrifuge at 5,000xg for 5min.
 2. Carefully open the tube and add 100ul of sterile water to dissolve the DNA.
 3. Close the tube and incubate for 10 minutes at room temperature.
 4. Briefly vortex the tube and then do a quick spin (less than 5000xg) to concentrate the liquid at the bottom.
 5. Store the suspended plasmid at -20°C. The DNA is stable for at least one year from date of shipping when stored at -20°C.

RefSeq: [NM_015844.2](#)

RefSeq Size: 2793 bp

RefSeq ORF: 1650 bp

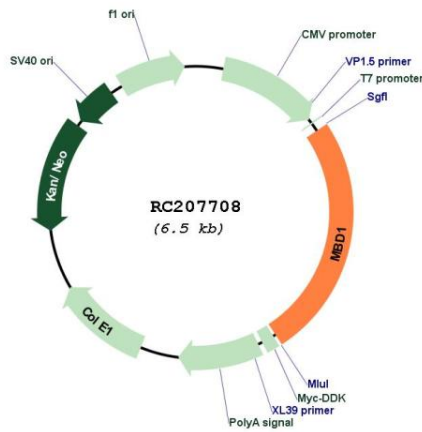
Locus ID: 4152

UniProt ID: [Q9UIS9](#)

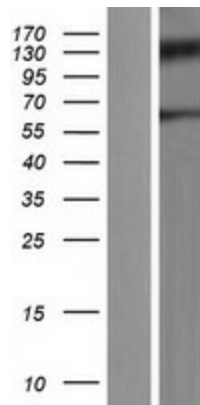
Cytogenetics: 18q21.1
Protein Families: Druggable Genome, Transcription Factors
MW: 59.8 kDa
Gene Summary:

The protein encoded by this gene is a member of a family of nuclear proteins related by the presence of a methyl-CpG binding domain (MBD). These proteins are capable of binding specifically to methylated DNA, and some members can also repress transcription from methylated gene promoters. This protein contains multiple domains: MBD at the N-terminus that functions both in binding to methylated DNA and in protein interactions; several CXXC-type zinc finger domains that mediate binding to non-methylated CpG dinucleotides; transcriptional repression domain (TRD) at the C-terminus that is involved in transcription repression and in protein interactions. Numerous alternatively spliced transcript variants encoding different isoforms have been noted for this gene.[provided by RefSeq, Feb 2011]

Product images:



Circular map for RC207708



Western blot validation of overexpression lysate (Cat# [LY414370]) using anti-DDK antibody (Cat# [TA50011-100]). Left: Cell lysates from untransfected HEK293T cells; Right: Cell lysates from HEK293T cells transfected with RC207708 using transfection reagent MegaTran 2.0 (Cat# [TT210002]).