

Product datasheet for **RC207706**

MAST4 (NM_198828) Human Tagged ORF Clone

Product data:

Product Type: Expression Plasmids
Product Name: MAST4 (NM_198828) Human Tagged ORF Clone
Tag: Myc-DDK
Symbol: MAST4
Mammalian Cell Selection: Neomycin
Vector: pCMV6-Entry (PS100001)
E. coli Selection: Kanamycin (25 ug/mL)
ORF Nucleotide Sequence: >RC207706 representing NM_198828
Red=Cloning site Blue=ORF Green=Tags(s)

TTTTGTAATACGACTCACTATAGGGCGGCCGGAATTCGTCGACTGGATCCGGTACCGAGGAGATCTGCC
GCC**CGATCGCC**

ATGGGGGAGAAAGTTTCGGAGGCGCCAGAGCCGGTGCCCCGGGCTGCAGTGGCCACGGCAGCCGGACTC
CAGCCTCTGCGCTGGTCGCCGCTCCTCTCCGGGTGCTTCTCGGCCGAGTCCTCCTCGGGCTCAGAAAC
TCTGTCCGAGGAAGGGGAGCCCGGGCTTCTCCAGAGAGCATCAGCCGCCGCCGCCCGCCGTTGGGA
GGCACCCCTGGGCGCCCGGGCGCCCGCGTGGGCTCCGGCAAGCGTGCTGCTGGAGCGCGGAGTCCTTG
CGCTGCCGCCCGCTTCCCGAGGAGCTGTGCCGCCCGGCCCGGGGAGCAGCGCGTCCCAGGAGGA
GCAGGACGAGGACTTGACCACATATTATCCCCTCCACCCATGCCGTTTCGGAAATGCAGCAACCCAGAT
GTGGCTTCTGGCCCTGGAAATCACTGAAGTATAAAGACAGCTGAGTGAGGATGGAAGACAGCTAAGGC
GAGGGAGCCTGGGAGGAGCCCTGACTGGGAGGTACCTTCTTCAAACCCGGTGGCGGGACAGGCCTGGCC
GGCCTCTGCAGAGACGTCCAACCTCGTGCGCATGCGCAGCCAGGCCCTGGCCAGTCGGCGCCCTCGCTC
ACCGCCAGCCTGAAGGAGCTGAGTCTCCCAGAAGAGGAAGTTTGATAGATTCCCAGAAGTGAATTGCT
TGGTCAAACGCCCTGTGTCCAATGCTGGGAGAACATCACCCCTTGA

ACGCGTACGCGGCCGCTCGAGCAGAAACTCATCTCAGAAGAGGATCTGGCAGCAAATGATATCCTGGATT
ACAAGGATGACGACGATAAGGTTTAA



[View online »](#)

Protein Sequence: >RC207706 representing NM_198828
Red=Cloning site Green=Tags(s)

MGEKVSEAPEVPVPRGCSGHGSRTPASALVAASSPGASSAESSSGSETLSEEGEPGGFSREHQPPPPPLG
 GTLGARAPAAWAPASVLLERGVLALPPPLPGGAVPPAPRGSSASQEEQEELDHILSPPMPFRKCSNP
 VASGPGKSLKYKRQLSEDRQLRRGSLGGALTRYLLPNPVAGQAWPASAETSNLVRMSQALGQSAPSL
 TAsLKELSLPRRGSLLDSQKWNCVLRKRPVCPNAGRTSPLG

TRTRPLEQKLISEEDLAANDILDYKDDDDKV

Chromatograms: https://cdn.origene.com/chromatograms/mg3664_d06.zip

Restriction Sites: SgfI-MluI

Cloning Scheme:



ACCN: NM_198828

ORF Size: 750 bp

OTI Disclaimer: The molecular sequence of this clone aligns with the gene accession number as a point of reference only. However, individual transcript sequences of the same gene can differ through naturally occurring variations (e.g. polymorphisms), each with its own valid existence. This clone is substantially in agreement with the reference, but a complete review of all prevailing variants is recommended prior to use. [More info](#)

OTI Annotation: This clone was engineered to express the complete ORF with an expression tag. Expression varies depending on the nature of the gene.

Components: The ORF clone is ion-exchange column purified and shipped in a 2D barcoded Matrix tube containing 10ug of transfection-ready, dried plasmid DNA (reconstitute with 100 ul of water).

Reconstitution Method:

1. Centrifuge at 5,000xg for 5min.
2. Carefully open the tube and add 100ul of sterile water to dissolve the DNA.
3. Close the tube and incubate for 10 minutes at room temperature.
4. Briefly vortex the tube and then do a quick spin (less than 5000xg) to concentrate the liquid at the bottom.
5. Store the suspended plasmid at -20°C. The DNA is stable for at least one year from date of shipping when stored at -20°C.

RefSeq: [NM_198828.3](#)

RefSeq Size: 1105 bp

RefSeq ORF: 753 bp

Locus ID: 375449

UniProt ID: [O15021](#)

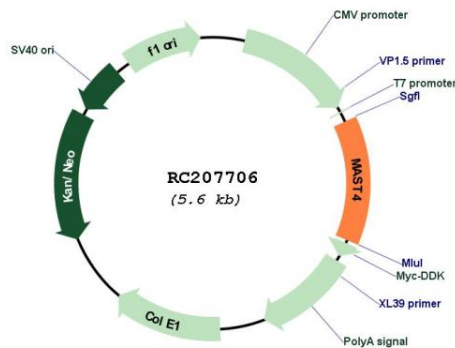
Cytogenetics: 5q12.3

Protein Families: Druggable Genome, Protein Kinase

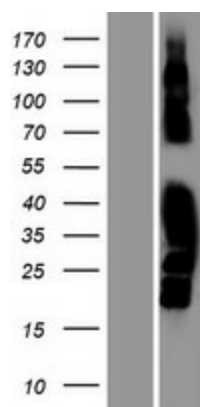
MW: 25.5 kDa

Gene Summary: This gene encodes a member of the microtubule-associated serine/threonine protein kinases. The proteins in this family contain a domain that gives the kinase the ability to determine its own scaffold to control the effects of their kinase activities. Alternative splicing results in multiple transcript variants encoding different isoforms. [provided by RefSeq, Mar 2014]

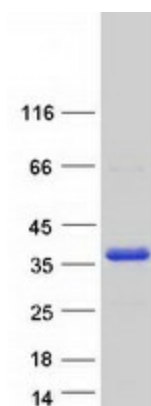
Product images:



Circular map for RC207706



Western blot validation of overexpression lysate (Cat# [LY404775]) using anti-DDK antibody (Cat# [TA50011-100]). Left: Cell lysates from untransfected HEK293T cells; Right: Cell lysates from HEK293T cells transfected with RC207706 using transfection reagent MegaTran 2.0 (Cat# [TT210002]).



Coomassie blue staining of purified MAST4 protein (Cat# [TP307706]). The protein was produced from HEK293T cells transfected with MAST4 cDNA clone (Cat# RC207706) using MegaTran 2.0 (Cat# [TT210002]).