

Product datasheet for **RC207690**

SUSD2 (NM_019601) Human Tagged ORF Clone

Product data:

Product Type:	Expression Plasmids
Product Name:	SUSD2 (NM_019601) Human Tagged ORF Clone
Tag:	Myc-DDK
Symbol:	SUSD2
Synonyms:	BK65A6.2; W5C5
Mammalian Cell Selection:	Neomycin
Vector:	pCMV6-Entry (PS100001)
E. coli Selection:	Kanamycin (25 ug/mL)



[View online »](#)

ORF Nucleotide
Sequence:

>RC207690 representing NM_019601
 Red=Cloning site Blue=ORF Green=Tags(s)

TTTTGTAATACGACTCACTATAGGGCGGCCGGGAATTCGTCGACTGGATCCGGTACCGAGGAGATCTGCC
 GCC**CGGATCGCC**

ATGAAGCCAGCCCTCTGCCCTGGGCCCTGCTGCTGCTGGCGACAGCCCTCGGCCGGGCCCGGACCCA
 CAGCAGATGCCCAAGAGAGCTGCTCCATGCGCTGTGGCGCCCTGGACGGGCCATGTTCTGCCACCCGAC
 GTGCTCTGGCCTTGGCACCTGCTGCTTGGATTTCCGGGACTTCTGCCTGGAGATATTGCCCTACTCAGGA
 TCCATGATGGGCGCAAGGACTTTGTGGTGCGGCACTTCAAGATGTCCAGCCCCACAGACGCCAGTGTGA
 TCTGCAGGTTTAAGGACAGCATCCAGACCCTCGGCCATGTGGACTCCTCCGGGCAAGTGCCTGTGTGC
 ACCTCTGCTCTATGAGAGCGCCGCATCCCCTTCACTGTGTCACTGGACAACGGCCACTCCTTCCCTCGT
 GCGGGCACCTGGCTGGCTGTGCACCCCAACAAAGTGTCAATGATGGAGAAGAGCGAGTTGGTGAACGAGA
 CGCGTTGGCAATACTACGGCACCCCAACACCTCAGGCAACCTCAGCCTGACCTGGCATGTCAAGTCGT
 GCCCAGCAGACCATCACCATCGAAGTGTGGGGCTACGAGGAGACAGGAATGCCCTACTCACAGGAGTGG
 ACTGCAAAGTGGTCGTACCTGTACCCCTGGCCACACACATCCCCAACTCCGGCTTTTCACTTTACCC
 CAAAACCTGCTCCTCCCAGCTACCAAGAGATGGCGAGTGGGTGCACCTTCGGATCATCGACAGCAAAAATTA
 CGCAGGGCAGAAGGACGTGCAGGCGCTCTGGACCAACGACCACGCACTGGCCTGGCACCTGAGCGATGAC
 TTCGAGAGGACCTGTGGCCTGGGCACGAACTCAGTGCAGGCTGGGAGGAGCTGGAGGATCAGCTGC
 CCAACTTCTGGAGGAGCTGCCGACTGCCCTGCACCCTGACCCAGGCCGGGCTGACTCCGGCCGCTT
 CTTACGGACTACGGCTGTGACATGGAGCAGGGCAGCGTGTGCACCTACCACCCGGGGCCGTGACTGT
 GTGCGTTCTGTGCAGGCCAGCCTCCGGTACGGCTCAGGTACAGTGTGCTACACAGCGGACGGGACGC
 AGTCCTGACAGCTGACTCCAGCGCGGCAGCACTCCCGACCCGGGCCATGACTGGGGCGCACCCCGTT
 CCGCACGCCACCCCGAGTGCCAGCATGTCCACTGGCTCTACGATGTCTCAGCTTCTATTACTGCTGC
 CTCTGGGCACCCGACTGCCCCCGCTACATGCAACGGCGGCCCTCCAATGACTGCCCAACTACCGCCCC
 CAAGACTGGCCTCCGCTTCGGAGACCCACACTTTGTGACCTTCGACGGCACCAACTTACATTTCAATGG
 GCGCGGAGAGTACGTGCTGCTGGAGGCAGCGCTGACCGACCTGAGGGTGCAGGCGCGGGCCAGCCCGGG
 ACGATGTCCAACGGCACGGAGACCCGTGGCACTGGGCTGACCGCAGTGGCCGTCCAGGAGGGCAACTCAG
 ATGTGGTGAAGTCAGGCTGGCCAACAGGACCGGAGGTCTGGAGGTGCTGCTGAACCAGGAGGTGCTGAG
 CTTACCGAGCAGAGCTGGATGGACCTGAAAGGAATGTTCTGTGCGTGGCTGCCGGGACAGGGTCTCC
 ATCATGCTGGCATCAGGGGCCGGCTGGAGGTCAGCGTGCAGGGCCGTTCTGAGTGTGTCGGTCTGTC
 TGCTGAGAAGTTCCTACCCACACCCACGGCCTCCTCGGGACACTCAACAACGACCCACCGAGCACTT
 CACCCTGCACAGCGGGCGCTCCTGCCCCAGGACCAAGTCCCCAGGAGCTGTTCTGTTGGGGCCAAC
 TGGACCGTGCACAATGCGTCTCCTCCCTGCTCACCTACGATTCTGGTTCTGGTCCACAACCTCCTGTACC
 AACCCAAGCACGACCCACCTTCGAGCCCTCTTCCCCAGTGAGACCACCTCAACCCAGCCTGGCACA
 AGAGGCAGCCAACTATGTGGGGACGATCATTTCTGCAACTTTGATGTGGCAGCCACTGGGAGCCTGAGC
 ACGGGCACTGCCACTCGGGTGGCCACCAAGCTGCACCAGCGTCGCATGCAGAGCCTGCAGCCAGTGGTGT
 CCTGTGGCTGGCTGGCCCCACCTCCCAACGGACAAAAGGAGGGCAACAGGTACCTGGCGGGTTCCACCAT
 CTACTTCCACTGTGACAACGGCTACAGCCTGGCCGGGGCAGAGACCAGCACCTGCCAGGCTGACGGCAC
 TGGTCTCACCCACCCCGAAGTGCCAGCCAGGACGACGCTACGCGGTGCTGTTGGGCATCATCTTTGGGG
 GCCTCGCGGTGGTGGCGCGGTTGCGCTCGTCTATGTGCTGCTGCGCCGAGGAAGGGCAACACGCACGT
 CTGGGGTGCACAGCCC

AG**CGGACCG**ACGCGTACGCGCCGCTCGAGCAGAACTCATCTCAGAAGAGGATCTGGCAGCAAATGATATCC
 TGGATTACAAGGATGACGACGATAAGGTTTAA

Protein Sequence: >RC207690 representing NM_019601
 Red=Cloning site Green=Tags(s)

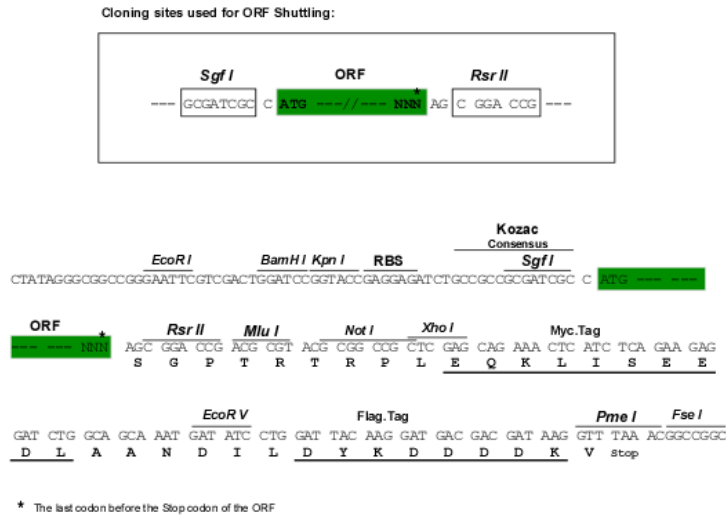
MKPALLPWALLLLATALGPGPGPTADAQESCSMRGALDGPCSCHPTCSGLGTCCLDFRDFCLEILPYSG
 SMMGGKDFVVRHFKMSSPTDASVICRFKDSIQTLGHVDSSGQVHCVSPLLYESGRIPFTVSLDNGHSFPR
 AGTWLAVHPNKVSMMEKSELVNETRWQYYGTANTSGNLSLTWHVKSLPTQTITIELWGYEETGMPYSQEW
 TAKWSYLYPLATHIPNSGSFTFTPKPAPPSYQRWRV GALRIIDSKNYAGQKDVQALWTDNDHALAWHL SDD
 FREDPVAWARTQCQAWEELEDQLPNFLEELPDCPCTLTQARADSGRFFTDYGC DMEQGSVCTYHPGAVHC
 VRSVQASLRYGSGQCCYADGTQLLTADSSGGSTPDRGHDWGAPPFRTPPRVPSMSHWLYDVL SFYYCC
 LWAPDCPRYMQRPSNDCRNYPRLASAFGDPHFVTFDGTNFTFNNGRGEYV LLEAAL TDLRVQARAQPG
 TMSNGTE TRGTGLTAVAVQEGNSDVVEVRLANRTGGLEVLLNQEVL SFTEQSWMDLKG MFLSVAAGDRVS
 IMLASGAGLEVS VQGPFLSVSVLLPEKFLTHTHGLLGT LNDPTDDFTLHSGRVLPPGTSPQELFLFGAN
 WTVHNASSLLTYDSWFLVHNFLYQPKHDPTFEPLFPSETTLNPSLAQEA AKLCGDDHFCNFDVAATGSL S
 TGTATRAVHQLHQRMSLQPVVSCGWLAPPPNGQKEGNRYLAGSTIYFHCDNGYSLAGAETSTCQADGT
 WSSPTPKCQPGRSYAVLLGIIFGGLAVVAVALVYVLLRRRKGNTHVWGAQP

SGP TRRRLEQKLI SEEDLAANDILDYKDDDDKV

Chromatograms: https://cdn.origene.com/chromatograms/mg4326_c08.zip

Restriction Sites: Sgfl-RsrII

Cloning Scheme:



ACCN: NM_019601

ORF Size: 2466 bp

OTI Disclaimer: The molecular sequence of this clone aligns with the gene accession number as a point of reference only. However, individual transcript sequences of the same gene can differ through naturally occurring variations (e.g. polymorphisms), each with its own valid existence. This clone is substantially in agreement with the reference, but a complete review of all prevailing variants is recommended prior to use. [More info](#)

OTI Annotation: This clone was engineered to express the complete ORF with an expression tag. Expression varies depending on the nature of the gene.

Components: The ORF clone is ion-exchange column purified and shipped in a 2D barcoded Matrix tube containing 10ug of transfection-ready, dried plasmid DNA (reconstitute with 100 ul of water).

Reconstitution Method:

1. Centrifuge at 5,000xg for 5min.
2. Carefully open the tube and add 100ul of sterile water to dissolve the DNA.
3. Close the tube and incubate for 10 minutes at room temperature.
4. Briefly vortex the tube and then do a quick spin (less than 5000xg) to concentrate the liquid at the bottom.
5. Store the suspended plasmid at -20°C. The DNA is stable for at least one year from date of shipping when stored at -20°C.

RefSeq: [NM_019601.4](#)

RefSeq Size: 3201 bp

RefSeq ORF: 2469 bp

Locus ID: 56241

UniProt ID: [Q9UGT4](#)

Cytogenetics: 22q11.23

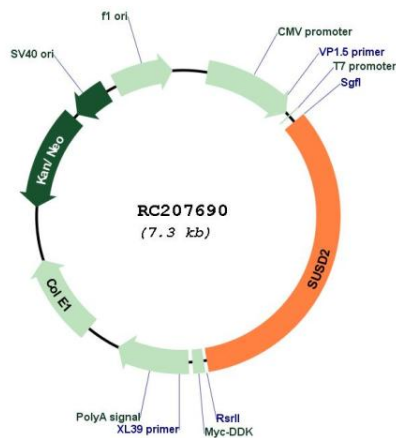
Domains: CCP, SO, VWD, AMOP

Protein Families: Transmembrane

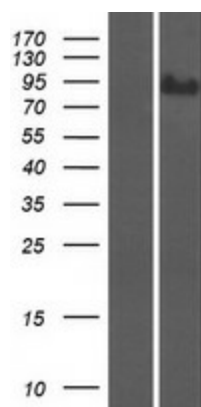
MW: 90 kDa

Gene Summary: May be a cytokine receptor for C10ORF99. May be a tumor suppressor; together with C10ORF99 has a growth inhibitory effect on colon cancer cells which includes G1 cell cycle arrest (PubMed:25351403). May play a role in breast tumorigenesis (PubMed:23131994). [UniProtKB/Swiss-Prot Function]

Product images:



Circular map for RC207690



Western blot validation of overexpression lysate (Cat# [LY412728]) using anti-DDK antibody (Cat# [TA50011-100]). Left: Cell lysates from untransfected HEK293T cells; Right: Cell lysates from HEK293T cells transfected with RC207690 using transfection reagent MegaTran 2.0 (Cat# [TT210002]).