

Product datasheet for **RC207686**

IKAP (IKBKAP) (NM_003640) Human Tagged ORF Clone

Product data:

Product Type:	Expression Plasmids
Product Name:	IKAP (IKBKAP) (NM_003640) Human Tagged ORF Clone
Tag:	Myc-DDK
Symbol:	IKAP
Synonyms:	DYS; FD; IKAP; IKBKAP; IKI3; TOT1
Mammalian Cell Selection:	Neomycin
Vector:	pCMV6-Entry (PS100001)
E. coli Selection:	Kanamycin (25 ug/mL)
ORF Nucleotide Sequence:	>RC207686 representing NM_003640 Red=Cloning site Blue=ORF Green=Tags(s)

TTTTGTAATACGACTCACTATAGGGCGGCCGGAATTCGTCGACTGGATCCGGTACCGAGGAGATCTGCC
GCC**CGATCGCC**

ATGCGAAATCTGAAATTATTTCCGACCCTGGAGTTCAGGGATATTCAAGGTCCAGGGAATCCTCAGTGCT
TCTCTCTCCGAAGTGAACAGGGGACGGTCTCATTGGTTCAGAACATGGCCTGATAGAAGTAGACCCCTGT
CTCAAGAGAAGTGAAGTTTCTTTGGTGGCAGAAAGGCTTTCTCCAGAGGATGGAAGTGGCCGC
ATTGTTGGTGTTCAGGACTTGTGGATCAGGAGTCTGTGTGTGGCCACAGCCTCTGGAGACGTCATAC
TCTGCAGTCTCAGCACACAACAGCTGGAGTGTGTTGGGAGTGTAGCCAGTGGTATCTCTGTTATGAGTTG
GAGTCTGACCAAGAGCTGGTGTCTTCCGACAGGTCACAGACCCGATTATGATGACAAAAGATTTT
GAGCCAATCCTGGAGCAGCAGATCCATCAGGATGATTTTGGTGAAGCAAGTTTATCACTGTTGGATGGG
GTAGGAAGGAGACACAGTTCATGGATCAGAAGGCAGACAAGCAGCTTTTCAGATGCAAAATGCATGAGTC
TGCTTTGCCCTGGGATGACCATAGACCACAAGTTACCTGGCGGGGGATGGACAGTTTTTGTGTGAGT
GTTGTTGGCCAGAAACAGGGGCTCGGAAGGTGAGTGTGGAACCGAGAGTTTGTCTTGCAGTCAACCA
GTGAGCCTGTGGCAGGACTGGGACCAGCCCTGGCTTGGAAACCCAGGCAGTTTGTATGCATCTACACA
AGATAAACCCAAACCAGCAGGATATTGTGTTTTTGAGAAAAATGGACTCCTTCATGGACACTTTACACTT
CCCTTCTTAAAGATGAGGTTAAGGTAATGACTTGCTCTGGAATGCAGATTCCCTGTGCTTGCAGTCT
GGCTGGAAGACCTTCAGAGAGAAGAAAGCTCCATTCCGAAAACCTGTGTTAGCTCTGGACTGTTGGAAA
CTATCACTGGTATCTCAAGCAAAGTTTATCCTTCAGCACCTGTGGAAAGCAAGATTGTGTCTCTGATG
TGGGACCCTGTGACCCATACCGGCTGCATGTTCTCTGTCAGGGCTGGCATTACCTCGCCTATGATTGGC
ACTGGACGACTGACCGGAGCGTGGGAGATAATTCAAGTGACTTGTCCAATGTGGCTGTCATTGATGGAAA
CAGGGTGTGGTACAGTCTTCCGGCAGACTGTGGTCCGCTCCCATGTGCACCTACCAACTGCTGTTCC
CCACACCTGTGAATCAAGTCACATTCTAGCACACCCTAAAAGAGTAATGACCTTGTCTGTTCTAGATG
CCAGTAACAGATTTCTGTTTATAAATGTGGTATTGTCCAAGTGCTGACCTACAGTAAAAGTGGGAGC
TGTGGGTGGAAGTGGATTTAAAGTTGCCTTAGAACTCCTCATTGGAAAAGAGATACAAAATCCAGTTT



[View online »](#)

GAGAATAATGAAGATCAAGATGTAACCCGCTGAAACTAGGCCTTCTCACTTGGATTGAAGAAGACGTCT
TCCTGGCTGTAAGCCACAGTGTTCAGCCCCGGTCTGTATTACCATTGACTGCAGCTTCTTCTGA
GATGGATGAAGAGCATGGACAGCTCAATGTCACTTTCATCTGCAGCGGTGGATGGGGTCATAATCAGTCTA
TGTTGCAATCCAAGACCAAGTCAGTAGTATTACAGCTGGCTGATGGCCAGATATTTAAGTACCTTTGGG
AGTCACCTTCTCTGGCTATTAACCATGGAAGAAGTCTGGTGGATTTCTGTTTCGGTTTCCCTATCCATG
CACCCAGACCGAATTGGCCATGATTGGAGAAGAGGAATGTGTCTTGGTCTGACTGACAGGTGTCGCTTT
TTTATCATGACATTGAGTTGCGTCAAATATCACGTCATTTGAGTATATGATGAGTTTTATTGTTGA
CAACCCATTCCCATACCTGCCAGTGTTCCTGAGGGATGCTTCATTTAAAACATTACAGGCCGGCCT
GAGCAGCAATCATGTGTCCCATGGGAAGTTCTGCGGAAAGTGGAGAGGGTTTACAGGATTGCACTGTT
GTGCCACAGACAAAAGCTTGTATTACAGATGCCAAGGGGAACTTAGAAGTTGTTTATCATCGAGCCC
TGGTTTTAGCTCAGATTCGGAAGTGGTTGGACAACTTATGTTTAAAGAGGCATTTGAATGCATGAGAAA
GCTGAGAATCAATCTCAATCTGATTTATGATCATAACCCTAAGGTGTTTCTTGGAAATGTGGAACTTC
ATTAACAGATAGATTCTGTGAATCATATTAACCTGTTTTTACAGAATTGAAAGAAGAAGATGTCACGA
AGACCATGTACCCTGCACCAGTTACCAGCAGTGTCTACCTGTCCAGGGATCCTGACGGGAATAAAATAGA
CCTTGTCTGCGATGCTATGAGAGCAGTCATGGAGAGCATAAATCCTCATAAATACTGCCTATCCACTT
ACATCTCATGTAAGAAGACAACCCAGAACTGGAATTTGACTGCAAAAAGTACACGAGCTCAAGGAA
ATGCTCCCTCTGATCCTGATGCTGTGAGTGTGAAGAGGCCTTGAATATTTGCTGCATCTGGTAGATGT
TAATGAATTATATGATCATTCTTGGCACCTATGACTTTGATTTGGTCCCTCATGGTAGCTGAGAAGTCA
CAGAAGGATCCCAAAGAATATCTTCCATTTCTTAACACTTAAGAAAATGGAACTAATTATCAGCGGT
TACTATAGACAAATACTTGAACGATATGAAAAAGCCATTGGCCACCTCAGCAAATGTGGACCTGAGTA
CTTCCAGAAATGCTTAACTTGATAAAGATAAAAACTTGTATAACGAAGCTCTGAAGTTATATCCACA
AGCTCACAAACAGTACCAGGATATCAGCATTGCTTATGGGAGCACCTGATGCAGGAGCACATGATGAGC
CAGCGGGCTCATGTTTGCCTGCGGTGCCACGAGAAAGCTCTCAGCCTTTCTCACATGCTGGCA
CTGGAAGCAAGCCCTCTGTGTGGCAGCCAGCTTAACTTTACCAAAGACCAGCTGGTGGCCTCGGCAGA
ACTCTGGCAGGAAAGCTGGTTGAGCAGAGGAAGCACATTGATGCGGCCATGGTTTTGGAAGAGTGTGCC
AGGATTATGAAGAAGCTGTGCTTGTGCTTTAGAAAGGAGTGCCTGGGAAGAAGCTTTGAGGCTGGTATA
CAAATATAACAGACTGGATATTATAGAAACCAACGTAAGCCTTCCATTTTAGAAGCCCAGAAAAATTAT
ATGGCATTCTGGACTCTCAGACAGCCACATTAGTCCGACAAAGAAACGTTTATTGGTAGTTCGAGAGC
TCAAGGAGCAAGCCAGCAGGCAGGTCTGGATGATGAGGTACCCACGGGCAAGAGTCAGACCTCTTCTC
TGAACACTAGCAGTGTGAGTGGCAGTGAAGTGGCAAATACTCCCATAGTAACTCCAGGATATCA
GCGAGATCATCCAAGAATCGCCGAAAAGCGGAGCGGAAGAAGCACAGCCTCAAAGAAGGCAGTCCGCTGG
AGGACCTGGCCCTCCTGGAGGACTGAGTGAAGTGGTGCAGAACACTGAAAACCTGAAAGATGAAGTATA
CCATATTTAAAGGTACTCTTTCTTTGAGTTTATGAAACAAGGAAGGGAATTACAGAAGGCCTTTGAA
GATACGCTGCAGTTGATGGAAAGGTCACTTCCAGAAATTTGGACTCTTACTTACCAGCAGAAATCAGCTA
CCCCGGTCTAGGTCCCAATTCTACTGCAAAATAGTATCATGGCATCTTATCAGCAACAGAAGACTTCGGT
TCCTGTTCTTGTGCTGAGCTTTTTATACCACCAAAGATCAACAGAAGAACCAGTGAAGCTGAGCCTG
CTAGAC

ACGCGTACGCGGCCGCTCGAGCAGAACTCATCTCAGAAGAGGATCTGGCAGCAAATGATATCCTGGATT
ACAAGGATGACGACGATAAGGTTTAA

Protein Sequence: >RC207686 representing NM_003640
 Red=Cloning site Green=Tags(s)

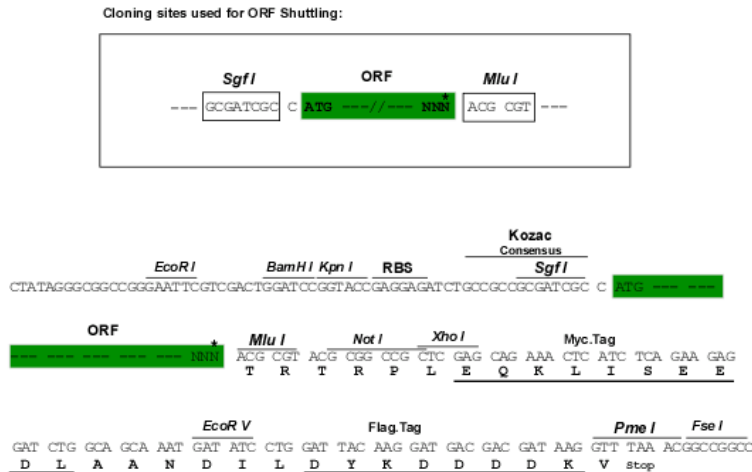
```
MRNLKLFRTLEFRDIQGPNGPQCFSRLRTEQGTVLIGSEHGLIEVDPVSREVKNEVSLVAEGFLPEDGSGR
IVGVQDLLDQESVCVATASGDVILCSLSTQQLCECVGSVASGISVMSWSPDQELVLLATGQQTLIMMTKDF
EPILQQIHQDDFGESKFIITVGWRKETQFHGSEGRQAAFQMQMHESALPDDHRPQVTVRWDGQFFAVS
VVCPETGARKVVRVWVWREFALQSTSEPVAGLGPALAWKPSGSLIASTQDKPNQQDIVFFEKNGLLHGHFTL
PFLKDEVKVNLLWNADSSVLAVWLEDLQREESSIPKTCVQLWTVGNVHWYKQSLSFSTCGKSKIVSLM
WDPVTPYRLHVLQCGWHYLAYDWHWTTDRSVGDNSSDL SNVAVIDGNRVLVTVFRQTVVPPMCTYQLLF
PHPVNVQVTFLAHPQKSNLDLAVLDASNQISVYKCGDCPSADPTVKLGAVGSGFKVCLRTPHLEKRYIQF
ENNEDQDVNPLKGLL TWIEEDVFLAVSHSEFSPRSVIHHLTAASSEMDEEHGQLNVSSAAVDGVIISL
CCNSKTKSVVLLQADGQIFKYLWESPLAIKPWKNSGGFPVRFYPCTQTELAMIGEEECVGLTDRCRF
FINDIEVASNITSFVYDEFLLLTTHSHTCQCFCLRDASFKTLQAGLSSNHVSHGEVLRKVERGSRIVTV
VPQDTKLVLQMPRGNLEVVHHRALVLAQIRKWLDKLMFKEAFECMRKLRINLNL IYDHNPKVFLGNVETF
IKQIDSVNHINLFFTELKEEDVTKTMYAPVTSVYLSRDPDGNKIDL VCDAMRAVMESINPHKYCLSIL
TSHVKKTTPELEIVLQKVHELQGNAPSDPAVSAEEALKYLLHLVDVNELYDHSGLTYDFDLVLMVAEKS
QKDPKEYLPFLNLTKKMETNYQRFITDKYLKRYEKAIGHLSKCGPEYFPECLNL IKDKNLVNEALKLYSP
SSQQYQDISIAYGEHLMQEHMYEPAGLMFARCGAHEKALSAFLT CGNWKQALCVAAQLNFTKDQLVGLGR
TLAGKLVQRKHIDAAMVLEECAQDYEEAVLLLEGAWEEALRLVYKYNRLDI IETNVKPSILEAQKNY
MAFLDSQTATFSRHKKRLLVVRELKEQAQAGLDDEVPHGQESDLFSETSSVVSSEMSESGKYSHSNSRIS
ARSSKNRRKAERKKHSLKEGSPLEDLALLEALSEVVQNTENLKDEVYHILKVLFLFFDEQGRELQKAFE
DTLQLMERSLPEIWTLYQQNSATPVLGPNSTANSIMASYQQKT SVPVLDAELF IPPKINRRTQWKLSDL
```

TRTRPLEQKLISEEDLAANDILDYKDDDDKV

Chromatograms: https://cdn.origene.com/chromatograms/mg4692_h10.zip

Restriction Sites: SgfI-MluI

Cloning Scheme:

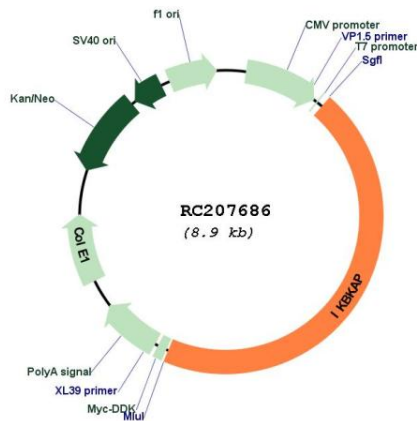


* The last codon before the Stop codon of the ORF

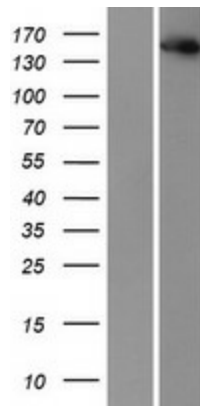
ACCN: NM_003640

ORF Size: 3996 bp

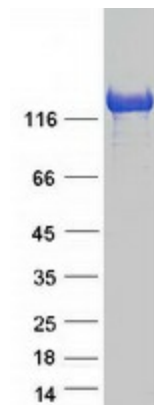
OTI Disclaimer:	Due to the inherent nature of this plasmid, standard methods to replicate additional amounts of DNA in E. coli are highly likely to result in mutations and/or rearrangements. Therefore, OriGene does not guarantee the capability to replicate this plasmid DNA. Additional amounts of DNA can be purchased from OriGene with batch-specific, full-sequence verification at a reduced cost. Please contact our customer care team at custsupport@origene.com or by calling 301.340.3188 option 3 for pricing and delivery.
	The molecular sequence of this clone aligns with the gene accession number as a point of reference only. However, individual transcript sequences of the same gene can differ through naturally occurring variations (e.g. polymorphisms), each with its own valid existence. This clone is substantially in agreement with the reference, but a complete review of all prevailing variants is recommended prior to use. More info
OTI Annotation:	This clone was engineered to express the complete ORF with an expression tag. Expression varies depending on the nature of the gene.
Components:	The ORF clone is ion-exchange column purified and shipped in a 2D barcoded Matrix tube containing 10ug of transfection-ready, dried plasmid DNA (reconstitute with 100 ul of water).
Reconstitution Method:	<ol style="list-style-type: none"> 1. Centrifuge at 5,000xg for 5min. 2. Carefully open the tube and add 100ul of sterile water to dissolve the DNA. 3. Close the tube and incubate for 10 minutes at room temperature. 4. Briefly vortex the tube and then do a quick spin (less than 5000xg) to concentrate the liquid at the bottom. 5. Store the suspended plasmid at -20°C. The DNA is stable for at least one year from date of shipping when stored at -20°C.
RefSeq:	NM_003640.5
RefSeq Size:	5917 bp
RefSeq ORF:	3999 bp
Locus ID:	8518
UniProt ID:	O95163
Cytogenetics:	9q31.3
Domains:	IKI3
Protein Families:	Druggable Genome
MW:	150.1 kDa
Gene Summary:	The protein encoded by this gene is a scaffold protein and a regulator for three different kinases involved in proinflammatory signaling. The encoded protein can bind NF-kappa-B-inducing kinase and I-kappa-B kinases through separate domains and assemble them into an active kinase complex. Mutations in this gene have been associated with familial dysautonomia. Alternative splicing results in multiple transcript variants encoding different isoforms. [provided by RefSeq, Jan 2016]

Product images:


Circular map for RC207686



Western blot validation of overexpression lysate (Cat# [LY418524]) using anti-DDK antibody (Cat# [TA50011-100]). Left: Cell lysates from untransfected HEK293T cells; Right: Cell lysates from HEK293T cells transfected with RC207686 using transfection reagent MegaTran 2.0 (Cat# [TT210002]).



Coomassie blue staining of purified ELP1 protein (Cat# [TP307686]). The protein was produced from HEK293T cells transfected with ELP1 cDNA clone (Cat# RC207686) using MegaTran 2.0 (Cat# [TT210002]).