

Product datasheet for RC207683

FHOD1 (NM_013241) Human Tagged ORF Clone

Product data:

Product Type:	Expression Plasmids
Product Name:	FHOD1 (NM_013241) Human Tagged ORF Clone
Tag:	Myc-DDK
Symbol:	FHOD1
Synonyms:	FHOS
Mammalian Cell Selection:	Neomycin
Vector:	pCMV6-Entry (PS100001)
E. coli Selection:	Kanamycin (25 ug/mL)
ORF Nucleotide Sequence:	>RC207683 representing NM_013241 Red=Cloning site Blue=ORF Green=Tags(s)

TTTTGTAATACGACTCACTATAGGGCGGCCGGAATTCGTCGACTGGATCCGGTACCGAGGAGATCTGCC
GCC**CGATCGCC**

ATGGCGGGCGGGGAAGACCGGGGACGGAGAGCCGGTATCAGTGGTGACCGTGAGGGTGCAGTACCTGG
AAGACACCGACCCCTTCGCATGTGCCAATTTCCGGAGCCGCGCCGGGCCCCACCTGCAGCCTGGACGG
GGCGCTGCCCTTGGGCGCGCAGATACCCCGGTGCACCGCTGCTGGGAGCGCCGCTCAAGTTGGAGGAT
TGTGCTCTGCAAGTGTCTCCCTCCGATACTACCTGGACACCGAGCTGTCCCTGGAAGAGCAGCGGGAGA
TGCTGGAGGGCTTCTATGAAGAGATCAGCAAAGGGCGGAAGCCACGCTGATCCTTCGGACCCAGCTCTC
TGTGAGGGTCAACGCTATCTTGGAAAAGCTGTATAGCTCCAGTGGTCTGAGCTCCGCCGCTCCCTCTTC
TCACTGAAGCAGATCTTCCAGGAGGACAAAGACCTGGTGCCTGAATTTGTGCATTAGAGGGGCTGAGCT
GCCTGATCCGTGTGGGTGCTGCTGCCGACCACAACCTACCAGAGCTACATCCTTAGAGCGCTCGGCCAGCT
GATGCTCTTTGTGGATGGAATGCTGGGGTGGTGGCCACAGTGACACTATTCAGTGGCTGTACACATTG
TGTGCCAGCCTGTCCCGCTTGGTGGTGAAGACAGCCCTGAAGCTGCTGTTGGTGTGTAGAACTCCG
AAAACAACGCACCGCTGTTTCATCCGTGCAGTGAACCTGTGGCCAGCACCACCGGTGCTCCTCCCTGGGC
CAATCTGGTGTCCATCCTGGAGGAGAAGAATGGCGCTGACCCTGAGTTGTTGGTGTACACGGTCAACCTC
ATCAACAAGACGCTGGCGCGCTCCCGGACAGGACTCCTTCTACGATGTGACGGATGCACTGGAGCAGC
AGGGCATGGAAGCGTGGTCCAGCGCCACCTGGGCACTGCGGGCACTGAGCTCGACCTGCGCAGCGCAGCT
TGTGCTCTACGAGAACGCCCTGAAATTGGAGGATGGAGACATCGAAGAAGCCCCAGGCGCTGGTGGCGG
CGGGAACGACGAAAGCCTTCTTCTGAGGAGGGCAAGAGGAGCCGCGTTCTCTGGAAGCGGGGGTGC
CCGCGCGTGGCCCGAACCTGGCCCCACAGGCCCGCCTCACCGGTAGGCCCCACCTCTTCCACCGGCC
CGCCCTGCTGACAGGCCCGCCTCCAGCCCTGTGGGCCCTCCCTCCGGTCTCCAAGCTTCAGTGAACCTT
TTTCTACCATCTCTGTGGCACCTCAGCTGACACCTCCAGCGAGAGGAGCATCTACAAAGCCCGTTCC
TGGAGAATGTGGCGGCAGCAGAAACAGAGAAGCAGGTTGCGCTGGCCAGGGCCGGGCGAGACACTTGC
CGGGCCATGCCAATGAGGCGGGTGGACACCCAGATGCCCGCAACTCTGGGACTCCCCAGAGACAGCC



CCTGCAGCCAGAACACCCAGAGCCCTGCCCCCTGTGTCCTGCTCCGGGCCAGCGAAGCCTTGCAACCAG
AGCCCAAGGAGCCACTGATACCAGCAAGCCCAAGGCTGAGCCCATCTGGGAGCTCCCTACCCGTGCACC
CAGGCTCTCTATTGGGGACCTGGACTTTTCAGATCTAGGGGAGGATGAAGACCAGGACATGCTGAATGTA
GAGTCTGTGGAGGCTGGGAAAGACATCCAGCTCCCTCACCCCACTGCCCTGCTCTCGGGAGTACCCC
CCCCTCCCCACTTCCACCTCCCCACCCATCAAAGGCCCTTCCCACCACCTCCACCTCTACCTTGGC
TGCCCTCTTCCCATTAGTGCCTGACAGCTCAGCCCTCCCCACTAAGAGGAAGACAGTAAAACTTTTC
TGGCGTGAGCTGAAGCTGGCTGGGGCCATGGAGTCTCTGCAAGCCGCTTGGGCCCTGCGCCACCCTCT
GGGCTTCACTGGACCCTGTCTCAGTGGACACGGCCCGACTGGAACACCTCTTTGAGTCTCGTGCCAAAGA
GGTGTGCCCTCCAAGAAAGCTGGAGAGGGCCGCGGACAATGACCACAGTGCTGGACCCCAAGCGCAGC
AACGCCATCAACATCGGCCTAACACACTGCCACCTGTGCATGTCATTAAGGCTGCTGCTCAACTTTG
ATGAGTTTGTGTGAGCAAGGATGGCATTGAGAAGCTACTGACCATGATGCCACGGAGGAAGAGCGGCA
GAAGATTGAGGAAGCCAGCTGGCCAACCCTGACATACCCTGGGCCAGCCGAGAATTCTGTGACT
CTTGCCCTCCATTGGCGCCTCGTGTCTGCTACAACCTTGGCCCTTCAAGCTGGACTATGACAGCATGG
AGCGGGAATTGCTGAGCCACTGTTTGACCTGAAAGTGGGTATGGAACAGCTGGTACAGAATGCCACCTT
CCGCTGCATCCTGGCTACCCTCCTAGCGGTGGGCAACTTCTCAATGGCTCCCAGAGCAGCGGCTTTGAG
CTGAGCTACCTGGAGAAGGTGTCAGAGGTGAAGGACACGGTGCCTGACAGTCACTGCTACACCATCTCT
GCTCCCTAGTGTCCAGACCCGGCTGAGTCTCTGACCTCTATTAGAAATCCCTGCCCTGACCCGCTG
TGCCAAGGTGGACTTTGAACAGCTGACTGAGAACCTGGGGCAGCTGGAGCGCCGGAGCCGGGCAGCCGAG
GAGAGCCTGCGGAGCTTGGCCAAGCATGAGCTGGCCCCAGCCCTGCGTGGCCCGCTCACCCACTTCTGG
ACCAGTGTGCCCGCCGTGTTGCCATGCTAAGGATAGTGCACCGCCGTGTCTGCAATAGGTTCCATGCCTT
CCTGCTCTACCTGGGCTACACCCCGCAGGCGGCCCGTGAAGTGGCATCATGCAGTTCTGCCACACGCTG
CGGAATTTGCGCTTGAATATCGGACTTGGCGGAACGAGTGCTACAGCAGCAGCAGAAGCAGGCCACAT
ACCGTGAGCGCAACAAGACCCGGGGACGCATGATCACCGAGACAGAGAAGTTCTCAGGTGTGGCTGGGGA
AGCCCCAGCAACCCCTGTGCCAGTAGCAGTGAGCAGCGGGCCAGCCGGGGAGATGCTGACAGTCAT
GCTAGTATGAAGAGTCTGCTGACCAGCAGGCTGAGGACACCACACAATCGCCGAGCAGAGGCATGG
TCCAGAGCAGCTCCCAATCATGCCACAGTGGGGCCCTCCACTGCATCCCAGAAGAACCCCGAGGCTC
CAGTTTACCCAGTGATACATCAGATGAGATCATGGACCTTCTGGTGCAGTCAGTGACCAAGAGCAGTCTT
CGTGCCTTAGCTGCTAGGGAACGCAAGCGTTCCCGCGGCAACCGCAAGTCTTTGAGAAGGACGTTGAAGA
GTGGGCTCGGAGATGACCTGGTGCAGGCACTGGGACTAAGCAAGGGTCTGGCCTGGAGGTG

ACGCGTACGCGGCCGCTCGAGCAGAACTCATCTCAGAAGAGGATCTGGCAGCAAATGATATCTGGATT
ACAAGGATGACGACGATAAGGTTTAA

Protein Sequence: >RC207683 representing NM_013241
Red=Cloning site Green=Tags(s)

MAGGEDRGGEPVSVVTVRVQYLEDDPFACANFPEPRRAPTCSLDGALPLGAQIPAVHRLLGAPLKLED
 CALQVSPSGYYLDELLEEQREMLEGFYEEISKGRKPTLILRTQLSVRVNAILEKLYSSSGPELRRSLF
 SLKQIFQEDKDLVPEFVHSEGLSCLIRVGAAADHNYQSYILRALGQLMLFVDGMLGVVAHSDTIQWLYTL
 CASLRLVVKALKLLLVFVEYSENNAPLFIKAVNSVASTTGAPPWANLVSILEEKNADPELLVYTVTL
 INKTLAALPDQDSFYDVTDALEQQGMEALVQRHLGTAGTDVDLRTQLVLYENALKLEDGDIEEAPGAGGR
 RERRKPSSEEGKRSRRSLEGGGCPARAPEPGPTGPASVGPSTSGTPALLTGPASSPVGPPSGLQASVNL
 FPTISVAPSADTSSERSIYKARFLENVAAAETEKQVALAQGRAETLAGAMPNEAGGHPDARQLWDSMETA
 PAARTQPSPAPCVLLRAQRSLAPEPEKPLIPASPKAEPWELPTRAPRLSIGDLDFSDLGEDEDQMLNV
 ESVEAGKDIPAPSPPLLLSGVPPPPPLPPPPPIKGFPPPPPLPLAAPLPHSVPDSSALPTKRKTVKLF
 WRELKLAGGHVGSASRFGPCATLWASLDPVSDTARLEHLFESRAKEVLPSSKAGEGRRTMTTVLDPKRS
 NAINIGLTTLPVHVIIKAAALNFDEFVSKDGIKLLTMMPTEEERQKIEEAQLANPDIPLGAENFLMT
 LASIGGLAARLQLWAFKLDYDSMEREIAEPLFDLKVGMEQLVQNAFRCILATLLAVGNFLNGSQSSGFE
 LSYLEKVSEVKDTRRQSLHHLCSLVLQTRPESSDLYSEIPALTRCAKVDFEQLTENLQGLERRSRAAE
 ESLRSLAKHELAPALRARLTHFLDQCARRVAMLRIVHRRVCNRFHAFLLYLGYTPQAAREVRIMQFCHTL
 REFALYRTCRERVLQQQQKQATYRERNKTRGMI TETEFSGVAGEAPSNPVPVAVSSGPGRGDADSH
 ASMKSLT SRPEDTTHNRRSRGMVQSSSPIMPTVGPSTASPEEPPGSSLPSDTSDEIMDLLVQSVTKSSP
 RALAARERKRSRGNRSLRRTLKSGLGDDL VQALGLSKGPGLEV

TRTRPLEQKLISEEDLAANDILDYKDDDDKV

Chromatograms: https://cdn.origene.com/chromatograms/ja1589_a11.zip

Restriction Sites: SgfI-MluI

Cloning Scheme:



ACCN: NM_013241

ORF Size: 3492 bp

OTI Disclaimer: Due to the inherent nature of this plasmid, standard methods to replicate additional amounts of DNA in E. coli are highly likely to result in mutations and/or rearrangements. Therefore, OriGene does not guarantee the capability to replicate this plasmid DNA. Additional amounts of DNA can be purchased from OriGene with batch-specific, full-sequence verification at a reduced cost. Please contact our customer care team at custsupport@origene.com or by calling 301.340.3188 option 3 for pricing and delivery.

The molecular sequence of this clone aligns with the gene accession number as a point of reference only. However, individual transcript sequences of the same gene can differ through naturally occurring variations (e.g. polymorphisms), each with its own valid existence. This clone is substantially in agreement with the reference, but a complete review of all prevailing variants is recommended prior to use. [More info](#)

OTI Annotation: This clone was engineered to express the complete ORF with an expression tag. Expression varies depending on the nature of the gene.

Components: The ORF clone is ion-exchange column purified and shipped in a 2D barcoded Matrix tube containing 10ug of transfection-ready, dried plasmid DNA (reconstitute with 100 ul of water).

Reconstitution Method:

1. Centrifuge at 5,000xg for 5min.
2. Carefully open the tube and add 100ul of sterile water to dissolve the DNA.
3. Close the tube and incubate for 10 minutes at room temperature.
4. Briefly vortex the tube and then do a quick spin (less than 5000xg) to concentrate the liquid at the bottom.
5. Store the suspended plasmid at -20°C. The DNA is stable for at least one year from date of shipping when stored at -20°C.

RefSeq: [NM_013241.3](#)

RefSeq Size: 3865 bp

RefSeq ORF: 3495 bp

Locus ID: 29109

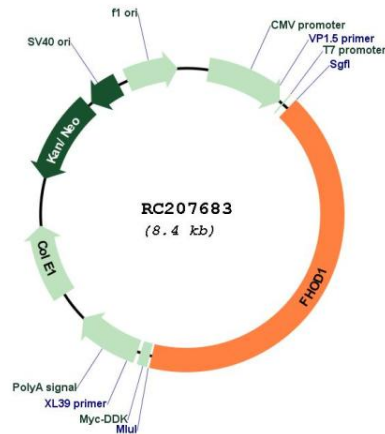
UniProt ID: [Q9Y613](#)

Cytogenetics: 16q22.1

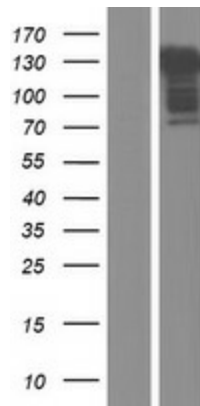
Domains: FH2

MW: 126.4 kDa

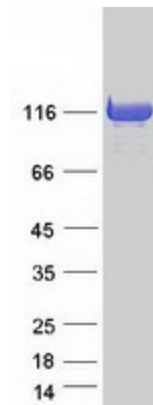
Gene Summary: This gene encodes a protein which is a member of the formin/diaphanous family of proteins. The gene is ubiquitously expressed but is found in abundance in the spleen. The encoded protein has sequence homology to diaphanous and formin proteins within the Formin Homology (FH)1 and FH2 domains. It also contains a coiled-coil domain, a collagen-like domain, two nuclear localization signals, and several potential PKC and PKA phosphorylation sites. It is a predominantly cytoplasmic protein and is expressed in a variety of human cell lines. Alternative splicing results in multiple transcript variants. [provided by RefSeq, Dec 2015]

Product images:


Circular map for RC207683



Western blot validation of overexpression lysate (Cat# [LY415719]) using anti-DDK antibody (Cat# [TA50011-100]). Left: Cell lysates from untransfected HEK293T cells; Right: Cell lysates from HEK293T cells transfected with RC207683 using transfection reagent MegaTran 2.0 (Cat# [TT210002]).



Coomassie blue staining of purified FHOD1 protein (Cat# [TP307683]). The protein was produced from HEK293T cells transfected with FHOD1 cDNA clone (Cat# RC207683) using MegaTran 2.0 (Cat# [TT210002]).