

Product datasheet for RC207680

EDA2R (NM_021783) Human Tagged ORF Clone

Product data:

Product Type:	Expression Plasmids
Product Name:	EDA2R (NM_021783) Human Tagged ORF Clone
Tag:	Myc-DDK
Symbol:	EDA2R
Synonyms:	EDA-A2R; EDAA2R; TNFRSF27; XEDAR
Mammalian Cell Selection:	Neomycin
Vector:	pCMV6-Entry (PS100001)
E. coli Selection:	Kanamycin (25 ug/mL)
ORF Nucleotide Sequence:	>RC207680 ORF sequence Red=Cloning site Blue=ORF Green=Tags(s)

TTTTGTAATACGACTCACTATAGGGCGCCGGGAATTCGTCGACTGGATCCGGTACCGAGGAGATCTGCC
GCC**CGATCGCC**

ATGGATTGCCAAGAAAATGAGTACTGGGACCAATGGGGACGGTGTGTCACCTGCCAACGGTGTGGTCCTG
GACAGGAGCTATCCAAGATTGTGGTTATGGAGAGGGTGGAGATGCCTACTGCACAGCCTGCCCTCCTCG
CAGGTACAAAAGCAGCTGGGGCCACCACAGATGTCAGAGTTGCATCACCTGTGCTGCATCAATCGTGT
CAGAAGGTCAACTGCACAGCTACCTCTAATGCTGTCTGTGGGACTGTTTGCCAGGTTCTACCGAAAGA
CACGCATTGGAGGCTGCAGGACCAAGAGTGCATCCCGTGCACGAAGCAGACCCACCTCTGAGGTTCA
ATGTGCCTCCAGTTGAGCTTAGTGGAGGACAGTGCACCCACAGTGCCCCCTCAGGAGGCCACACTGTT
GCACTGGTGAGCAGCCTGCTAGTGGTGTACCCTGGCCTTCTGGGGCTCTTCTCCTCTACTGCAAGC
AGTTCTTCAACAGACATTGCCAGCGTGGAGTTTGTGTCAGTTTGGGCTGATAAAACAGCAAAGGAGGA
ATCTCTTCCCCGTGCCACCCAGCAAGGAGACCAGTGTGAGTCCCAAGTGAAGTGAACATCTTTCAG
ACCCAGCCACTTAACCTATCCTCGAGGACGACTGCAGCTCGACTAGTGGCTTCCCACACAGGAGTCTT
TTACCATGGCCTCCTGCACCTCAGAGAGCCACTCCCCTGGGTCACAGCCCCATCGAATGCACAGAGCT
GGACCTGCAAAAGTTTTCCAGCTCTGCCTCCTATACTGGAGCTGAGACCTTGGGGGAAACACAGTCGAA
AGCACTGGAGACAGGCTGGAGCTCAATGTGCCCTTGAAGTTCACAGCCCT

ACGCGTACGCGGGCCGCTCGAGCAGAAACTCATCTCAGAAGAGGATCTGGCAGCAAATGATATCCTGGATT
ACAAGGATGACGACGATAAGGTTTAA



[View online »](#)

Protein Sequence: >RC207680 protein sequence
Red=Cloning site Green=Tags(s)

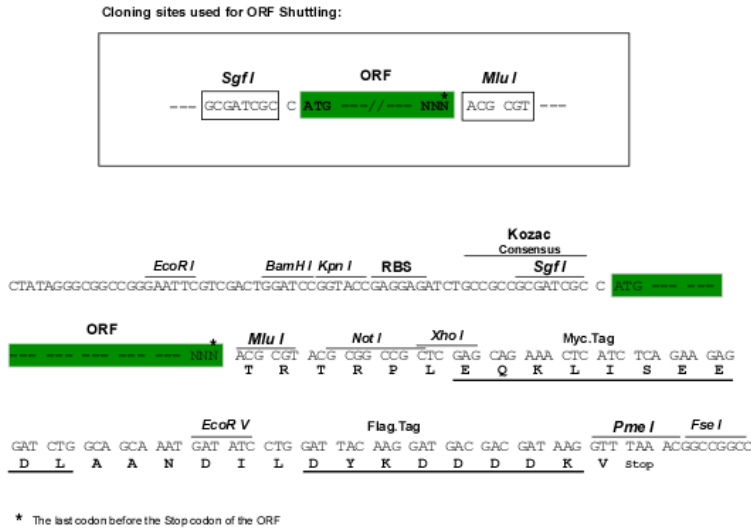
MDCQENEYWDQWGRVTCQRCGPGQELSKDCGYGEGGDAYCTACPPRRYKSSWGHHCQSCITCAVINRV
 QKVNCTATSNVCGDCLPRFYRKTRIGGLQDQECIPCTKQTPPTSEVQCAFQLSLVEADPTVPPQEATLV
 ALVSSLLVVFLLAFLGLFLYCKQFFNRHCQRGGLLQFEADKTAKEESLFPVPPSKETSAESQVSENIHQ
 TQPLNPILEDCCSSTSGFPTQESFTMASCTSESHHWVHSPIECTELDLQKFSSSASYTGAETLGGNTVE
 STGDRLELNVPFEVPS

TRTRPLEQKLISEEDLAANDILDYKDDDDKV

Chromatograms: https://cdn.origene.com/chromatograms/mk6720_a06.zip

Restriction Sites: SgfI-MluI

Cloning Scheme:



ACCN: NM_021783

ORF Size: 891 bp

OTI Disclaimer: The molecular sequence of this clone aligns with the gene accession number as a point of reference only. However, individual transcript sequences of the same gene can differ through naturally occurring variations (e.g. polymorphisms), each with its own valid existence. This clone is substantially in agreement with the reference, but a complete review of all prevailing variants is recommended prior to use. [More info](#)

OTI Annotation: This clone was engineered to express the complete ORF with an expression tag. Expression varies depending on the nature of the gene.

Components: The ORF clone is ion-exchange column purified and shipped in a 2D barcoded Matrix tube containing 10ug of transfection-ready, dried plasmid DNA (reconstitute with 100 ul of water).

Reconstitution Method:

1. Centrifuge at 5,000xg for 5min.
2. Carefully open the tube and add 100ul of sterile water to dissolve the DNA.
3. Close the tube and incubate for 10 minutes at room temperature.
4. Briefly vortex the tube and then do a quick spin (less than 5000xg) to concentrate the liquid at the bottom.
5. Store the suspended plasmid at -20°C. The DNA is stable for at least one year from date of shipping when stored at -20°C.

RefSeq: [NM_021783.4](#)

RefSeq Size: 3440 bp

RefSeq ORF: 894 bp

Locus ID: 60401

UniProt ID: [Q9HAV5](#)

Cytogenetics: Xq12

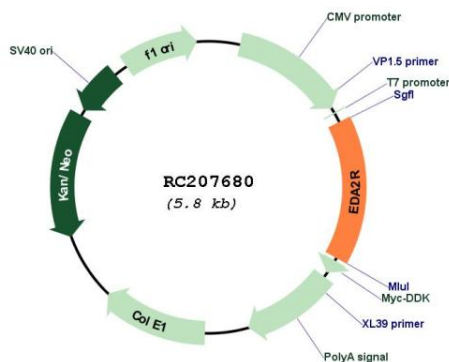
Protein Families: Druggable Genome, Transcription Factors, Transmembrane

Protein Pathways: Cytokine-cytokine receptor interaction

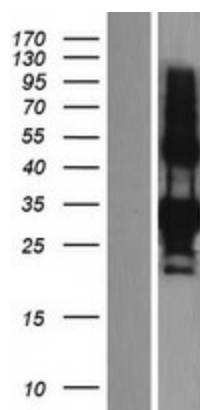
MW: 32.7 kDa

Gene Summary: The protein encoded by this gene is a type III transmembrane protein of the TNFR (tumor necrosis factor receptor) superfamily, and contains cysteine-rich repeats and a single transmembrane domain. This protein binds to the EDA-A2 isoform of ectodysplasin, which plays an important role in maintenance of hair and teeth. Alternatively spliced transcript variants encodes distinct protein isoforms. [provided by RefSeq, Apr 2016]

Product images:



Circular map for RC207680



Western blot validation of overexpression lysate (Cat# [LY411924]) using anti-DDK antibody (Cat# [TA50011-100]). Left: Cell lysates from untransfected HEK293T cells; Right: Cell lysates from HEK293T cells transfected with RC207680 using transfection reagent MegaTran 2.0 (Cat# [TT210002]).