

Product datasheet for **RC207666**

MTFMT (NM_139242) Human Tagged ORF Clone

Product data:

Product Type:	Expression Plasmids
Product Name:	MTFMT (NM_139242) Human Tagged ORF Clone
Tag:	Myc-DDK
Symbol:	MTFMT
Synonyms:	COXPD15; FMT1; MC1DN27
Mammalian Cell Selection:	Neomycin
Vector:	pCMV6-Entry (PS100001)
E. coli Selection:	Kanamycin (25 ug/mL)
ORF Nucleotide Sequence:	>RC207666 ORF sequence Red=Cloning site Blue=ORF Green=Tags(s)

TTTTGTAATACGACTCACTATAGGGCGGCCGGAATTCGTCGACTGGATCCGGTACCGAGGAGATCTGCCGCC**CGCATCGCC**

ATGCCTTCCCCATCACCAAAAGGACTGCCAGTGAAGCAATATGCTGTGCAGTCTCAGCTTCCCGTATATGAGTGGCCGGATGTGGGATCTGGAGAATATGATGTTGGAGTAGTGGCTTCGTTTGGCCGACTTTTGAATGAGGCTCTTATTCTAAATTTCCCTATGGCATATTGAATGTTTCATCCAGTTCGCTCCCGAGATGGCGTGGCCAGCCCTGTAATCCATACAGTGCTTCACGGAGACACAGTACTGGAGTAACAATTATGCAAAATAGACTAAAAGTTTGTAGTGGCCCAATTCTCAAACAAGAACTGTTCTGTGCCACCAAGAGCACTGCAAAAGGAAATGGAAGCAGTGTGTCAAGACTGGGTGCCAACATGCTCATTTTCAGTTTTGAAAAATTTGCCTGAAAGTCTGAGCAATGGAAGGCAGCAGCCAATGGAGGGGGCGACTTACGCCCTAAGATTTCTGCTGGTACCAATTGTATAAAAATGGGAGGAACAACCTTCAGAACAATAATTCAGACTTTACCGTGCCATTGGAAATATAATCCGTTGCAGACGCTCTGGATGGCGAATACCATTAACCTTCTGGATTTGGTAGAAGTTAACAGTTTCAGTCTTGCTGATCCAAAATTAACGGGACAGGCTCTTATCCAGGATCAGTAATATACCACAAACAGTCACAAA TACTATTGGTTTATTGCAAGGATGGTTGGATTGGTGTTCGATCAGTGATGCTCAAGAAATCACTAACAGCTACTGACTTCTACAATGGATATTTGCACCCCTGGTACCAGAAAAATCCCAAGCTCAACCAAGCCAATGCAGATTTTCAGACTCTCAGACTTCCAACAAGAAGAAGCAGAAAAAACTGTTGCTATGCAACAATGCATTGAG

ACGCGTACGCGGCCGCTCGAGCAGAACTCATCTCAGAAGAGGATCTGGCAGCAATGATATCCTGGATTACAAGGATGACGACGATAAGGTTTAA



[View online »](#)

Protein Sequence: >RC207666 protein sequence
Red=Cloning site Green=Tags(s)

MPSPSPKGLPVKQYAVQSQLPVYEPDVGSGEYDVGVVASFGRLLEALILKFPYGILNVHPSCLPRWRG
 PAPVIHTVLHGDTVGTIMQIRPKRFDVGPILKQETVPVPPKSTAKELEAVLSRLGANMLISVLKNLPE
 SLSNGRQQPMEGATYAPKISAGTSCIKWEEQTSQIFRLYRAIGNIIPLOQLWMANTIKLLDLVEVNSSV
 LADPKLTGQALIPGSVIYHKQSQILLVYCKDGIWVRSVMLKKSLTATDFYNGYLHPWYQKNSQAQPSQC
 RFQTLRLPTKKKQKKTVMAMQCCIE

TRTRPLEQKLISEEDLAANDILDYKDDDDKV

Chromatograms: https://cdn.origene.com/chromatograms/mk6517_d05.zip

Restriction Sites: SgfI-MluI

Cloning Scheme:



ACCN: NM_139242

ORF Size: 912 bp

OTI Disclaimer: The molecular sequence of this clone aligns with the gene accession number as a point of reference only. However, individual transcript sequences of the same gene can differ through naturally occurring variations (e.g. polymorphisms), each with its own valid existence. This clone is substantially in agreement with the reference, but a complete review of all prevailing variants is recommended prior to use. [More info](#)

OTI Annotation: This clone was engineered to express the complete ORF with an expression tag. Expression varies depending on the nature of the gene.

Components: The ORF clone is ion-exchange column purified and shipped in a 2D barcoded Matrix tube containing 10ug of transfection-ready, dried plasmid DNA (reconstitute with 100 ul of water).

Reconstitution Method:

1. Centrifuge at 5,000xg for 5min.
2. Carefully open the tube and add 100ul of sterile water to dissolve the DNA.
3. Close the tube and incubate for 10 minutes at room temperature.
4. Briefly vortex the tube and then do a quick spin (less than 5000xg) to concentrate the liquid at the bottom.
5. Store the suspended plasmid at -20°C. The DNA is stable for at least one year from date of shipping when stored at -20°C.

RefSeq: [NM_139242.2](#), [NP_640335.1](#)

RefSeq Size: 2763 bp

RefSeq ORF: 1170 bp

Locus ID: 123263

UniProt ID: [Q96DP5](#)

Cytogenetics: 15q22.31

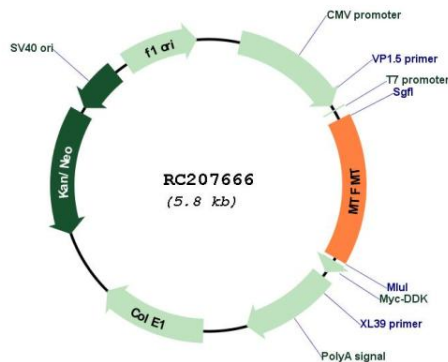
Domains: formyl_transf

Protein Pathways: Aminoacyl-tRNA biosynthesis, One carbon pool by folate

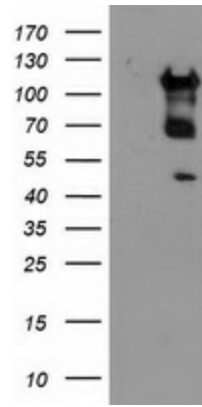
MW: 33.8 kDa

Gene Summary: The protein encoded by this nuclear gene localizes to the mitochondrion, where it catalyzes the formylation of methionyl-tRNA. [provided by RefSeq, Jun 2011]

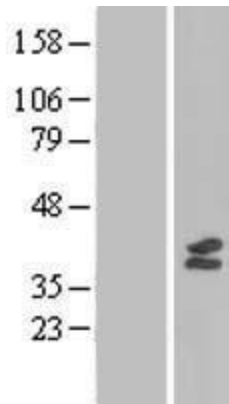
Product images:



Circular map for RC207666



HEK293T cells were transfected with the pCMV6-ENTRY control (Cat# [PS100001], Left lane) or pCMV6-ENTRY MTFMT (Cat# RC207666, Right lane) cDNA for 48 hrs and lysed. Equivalent amounts of cell lysates (5 ug per lane) were separated by SDS-PAGE and immunoblotted with anti-MTFMT(Cat# [TA503565]). Positive lysates [LY408317] (100ug) and [LC408317] (20ug) can be purchased separately from OriGene.



Western blot validation of overexpression lysate (Cat# [LY408317]) using anti-DDK antibody (Cat# [TA50011-100]). Left: Cell lysates from untransfected HEK293T cells; Right: Cell lysates from HEK293T cells transfected with RC207666 using transfection reagent MegaTran 2.0 (Cat# [TT210002]).