

Product datasheet for **RC207665**

TTC30B (NM_152517) Human Tagged ORF Clone

Product data:

Product Type:	Expression Plasmids
Product Name:	TTC30B (NM_152517) Human Tagged ORF Clone
Tag:	Myc-DDK
Symbol:	TTC30B
Synonyms:	fleer; IFT70; IFT70B
Mammalian Cell Selection:	Neomycin
Vector:	pCMV6-Entry (PS100001)
E. coli Selection:	Kanamycin (25 ug/mL)



[View online »](#)

ORF Nucleotide
Sequence:

>RC207665 ORF sequence
Red=Cloning site Blue=ORF Green=Tags(s)

TTTTGTAATACGACTCACTATAGGGCGGCCGGAATTCGTCGACTGGATCCGGTACCGAGGAGATCTGCC
GCC**CGCATCGCC**

ATGGCTGGCCTGAGCGGCGCGCAGATCCCCGACGGGGAGTTCACCGCGGTCTGTACCGCCTCATCCGCA
ATGCACGCTACGCCGAGGCGGTGACGCTCTGGCGGAGAACTGCAGCGAGCCCTAGGAGCCGCGCCGG
CCTGTCGCTGCTAGGCTACTGCTACTACCGCCTGCAGGAGTTCGCGCTGGCGGCCGAGTGTATGAGCAG
CTGGGCCAGCTGCACCCGGAAGTGGAGCAGTACCGCCTGTACCAGGCCAGGCCCTATACAAGGCCTGCC
TTTATGCGGAGGCCACCCGGTGCCTTCTTCTCTGGATAACCCCGCCTACCACAGCCGGTCTCCA
CCTGCAAGCTGTATCAAGTACAGCGAGGGCGATCTGCCAGGGTCCAGGAGCCTGGTAGAGCAGCTGCCG
AGTAGGGAAGGGGAGAGGAAAGTGGGGCGGAGAATGAGACCGATGGCCAGATCAACCTGGGTTGTTTGC
TCTACAAGGAGGGACAGTATGAAGCTGCATGCTCCAAGTTTTTTCGCCCTGCAGGCCTCGGGCTACCA
GCCTGACCTTTCACAACCTGGCTTTGGCCTATTACAGCAGCCGACAGTATGCTTCAGCACTGAAGCAT
ATCGCTGAGATTATTGAGCGTGGCATCCGCCAGCACCTGAGCTAGGTGTGGGCATGACCACTGAGGGCA
TTGATGTTGCGAGTGTGGCAACACCTTAGTCCTCCATCAGACTGCTCTGGTGGAAAGCCTTCAACCTTAA
GGCAGCTATAGAATACCAACTGAGAACTATGAGGCAGCTCAAGAAGCCCTCACTGACATGCCACCCAGG
GCAGAGGAAGAGTTGGACCCTGTGACCCTACACAACCAGGCACTAATGAACATGGATGCCAGGCCTACAG
AAGGGTTTGAAAAGCTACAGTTTTTGTCCAACAGAATCCCTTTCCTCCAGAGACTTTTGGCAACCTGTT
GCTGCTCTACTGTAATATGAGTATTTGACCTGGCAGCAGATGTCTGGCAGAAAATGCCATTTGATT
TATAAGTTCCTCACACCCTATCTCTATGACTTCTTGGACGCTGTGATCACTTCCAGACAGCTCCTGAAG
AGGCTTTCATTAAGCTTGATGGCTAGCAGGGATGCTGACTGAGGTCTCCGAAAACCTACCATAACAAGT
ACAGGAAGCAAGACACAATAGAGATGATGAAGCTATCAAAAAGGCAGTGAATGAATATGATGAAACCATG
GAGAAATACATTCCTGTGTTGATGGCTCAGGCAAAAATCTACTGGAATCTTGAAAATTATCCAATGGTGG
AAAAGATCTTCCGCAAATCTGTGGAATTCTGTAACGACCATGATGTGTGGAAGTTGAATGTGGCTCATGT
TCTGTTTCATGCAGGAAAACAAATACAAAGAAGCCATTGGTTTCTATGAACCCATAGTCAAGAAGCATTAT
GATAACATCCTGAATGTCAGTGTCTATTGTAAGTGGCTAATCTCTGTGTTTCTATATTATGACAAGTCAA
ATGAAGAAGCAGAGGAGTTGATGAGGAAGATTGAAAAGGAGGAAGAGCAGCTCTCTTATGATGACCCAGA
TAAGAAAATGTACCATCTCTGCATTGTGAATTTGGTGTAGGAACTCTTATTGTGCCAAAGGAAATTTAT
GACTTTGGTATTTCTCGAGTTATCAAAAGCTTGAACCTTACAACAAAAGCTGGGAACAGACACCTGGT
ATTATGCCAAAAGATGCTTCTGTCTTGTAGAAAACATGTCAAAACACACAATCATGCTTCGTGATAG
TGTTATTCAGAATGTGTCCAGTTTCTAGAACACTGTGAACCTCATGGCAGAAAACATACCTGCTGTATT
GAACAACCCCTGGAAGAAGAAAGATGCATGTTGGAAAGAATACAGTCACATATGAGTCTAGGCAGTTAA
AAGCTTTGATTTATGAGATTATAGGATGGAATATA

ACGCGTACGCGGCCGCTCGAGCAGAACTCATCTCAGAAGAGGATCTGGCAGCAAATGATATCCTGGATT
ACAAGGATGACGACGATAAGGTTTAA

Protein Sequence: >RC207665 protein sequence
 Red=Cloning site Green=Tags(s)

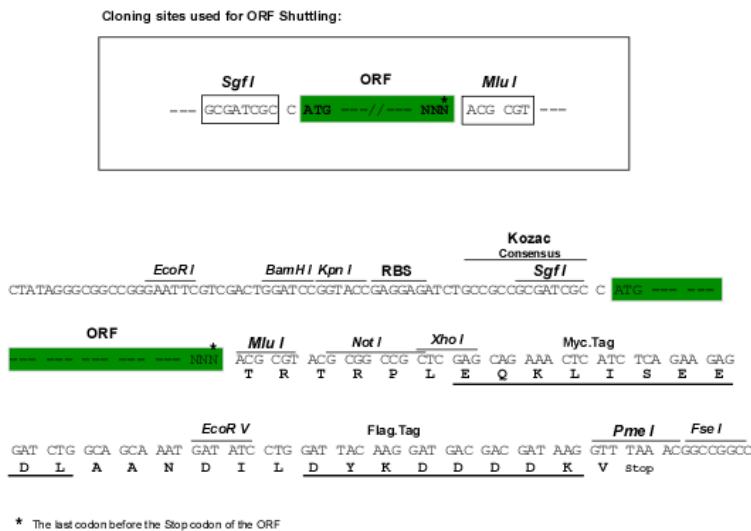
```
MAGLSGAQIPDGEFTAVVYRLIRNARYAEAVQLLGGELQSPRSRAGLSLLGYCYRRLQEFALAAECYEQ
LGQLHPELEQYRLYQAQALYKACLYAEATRVAFLLLDNPAYHSRVLHLQAAIKYSEGDLPGSRSLVEQLP
SREGGEESGGENETDGQINLGCLLYKEGQYEAACSKFFAALQASGYQPDLSYNLALAYSSRQYASALKH
IAEIIERGIRQHPPELGVGMTTEGIDVRSVGNLVLHQTALVEAFNLKAAIEYQLRNYEAAQEALTMPPR
AEEELDVPVTLHNQALMNMDARPTGFEKLFLLQONPPFPETFGNLLLLYCKYEYFDLAADVLAENALI
YKFLTPYLYDFLDAVITCQTAPEEAFIKLDGLAGMLTEVLRKLTIQVQEARHNRDDEAIKKAVNEYDETM
EKYIPVLMQAQKIYWNLENYPMVEKIFRKSVEFCNDHDVWKLNVAVHLMQENKYKEAIGFYEPIVKKHY
DNILNVSIAIVLANLCSVYIMTSQNEEAELMRKIEKEEQSLSYDDPKKMYHLICIVNLVIGTLCAKAGNY
DFGISRVIKSLEPYNKKLGTDTWYAKRCFLSLENMSKHTIMLRDSVIQECVQFLEHCELHGRNIPAVI
EQPLEEERMHVGNKNTVTYESRQLKALIYEIIGWNI
```

TRTRPLEQKLISEEDLAANDILDYKDDDDKV

Chromatograms: https://cdn.origene.com/chromatograms/mk6517_b02.zip

Restriction Sites: SgfI-MluI

Cloning Scheme:



ACCN: NM_152517

ORF Size: 1995 bp

OTI Disclaimer: The molecular sequence of this clone aligns with the gene accession number as a point of reference only. However, individual transcript sequences of the same gene can differ through naturally occurring variations (e.g. polymorphisms), each with its own valid existence. This clone is substantially in agreement with the reference, but a complete review of all prevailing variants is recommended prior to use. [More info](#)

OTI Annotation: This clone was engineered to express the complete ORF with an expression tag. Expression varies depending on the nature of the gene.

Components: The ORF clone is ion-exchange column purified and shipped in a 2D barcoded Matrix tube containing 10ug of transfection-ready, dried plasmid DNA (reconstitute with 100 ul of water).

Reconstitution Method:

1. Centrifuge at 5,000xg for 5min.
2. Carefully open the tube and add 100ul of sterile water to dissolve the DNA.
3. Close the tube and incubate for 10 minutes at room temperature.
4. Briefly vortex the tube and then do a quick spin (less than 5000xg) to concentrate the liquid at the bottom.
5. Store the suspended plasmid at -20°C. The DNA is stable for at least one year from date of shipping when stored at -20°C.

RefSeq: [NM_152517.2](#), [NP_689730.2](#)

RefSeq Size: 2652 bp

RefSeq ORF: 1998 bp

Locus ID: 150737

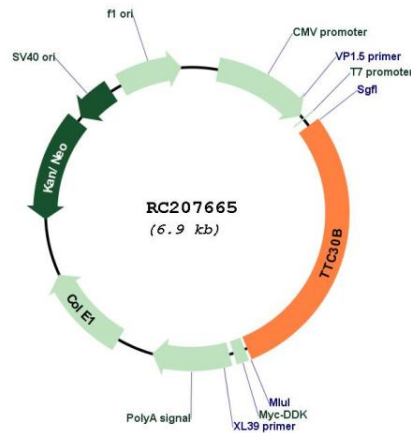
UniProt ID: [Q8N4P2](#)

Cytogenetics: 2q31.2

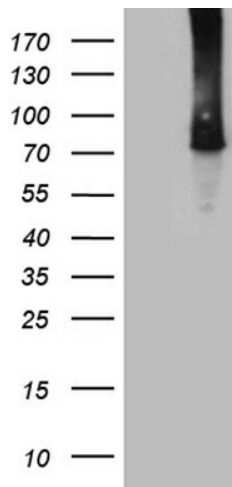
MW: 76.1 kDa

Gene Summary: Required for polyglutamylation of axonemal tubulin. Plays a role in anterograde intraflagellar transport (IFT), the process by which cilia precursors are transported from the base of the cilium to the site of their incorporation at the tip.[UniProtKB/Swiss-Prot Function]

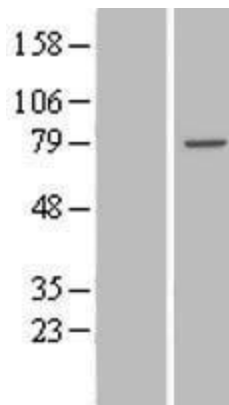
Product images:



Circular map for RC207665



HEK293T cells were transfected with the pCMV6-ENTRY control (Cat# [PS100001], Left lane) or pCMV6-ENTRY TTC30B (Cat# RC207665, Right lane) cDNA for 48 hrs and lysed. Equivalent amounts of cell lysates (5 ug per lane) were separated by SDS-PAGE and immunoblotted with anti-TTC30B antibody (Cat# [TA811993]). Positive lysates [LY407473] (100ug) and [LC407473] (20ug) can be purchased separately from OriGene.



Western blot validation of overexpression lysate (Cat# [LY407473]) using anti-DDK antibody (Cat# [TA50011-100]). Left: Cell lysates from untransfected HEK293T cells; Right: Cell lysates from HEK293T cells transfected with RC207665 using transfection reagent MegaTran 2.0 (Cat# [TT210002]).