

Product datasheet for **RC207664**

C20orf144 (NM_080825) Human Tagged ORF Clone

Product data:

Product Type: Expression Plasmids
Product Name: C20orf144 (NM_080825) Human Tagged ORF Clone
Tag: Myc-DDK
Symbol: C20orf144
Synonyms: dj63M2.6
Mammalian Cell Selection: Neomycin
Vector: pCMV6-Entry (PS100001)
E. coli Selection: Kanamycin (25 ug/mL)
ORF Nucleotide Sequence: >RC207664 representing NM_080825
Red=Cloning site Blue=ORF Green=Tags(s)

TTTTGTAATACGACTCACTATAGGGCGGCCGGAATTCGTCGACTGGATCCGGTACCGAGGAGATCTGCC
GCC**CGATCGCC**

ATGGGAACTATAGTTCCCAAAAAGGACCAAAGCACCCAAGCAGGCCCGCAAGGAGAGGCCGGCTGACA
TGGACAAGGCCTGGTGGAAATCGTTCCTCAACCACCTCACTCGGAAGAAGCCGGCTACCAGGATCGTGCT
GATTCTCCCCCTGGACAAGCGGCAGCCGCTGGCCAACGCTGGGCAACGGATTGACTACGCGTCCGGCGCT
GGGCTGGGCTCCCGGCGGCACCCAGATTGCGCGGAGCGGGCGAAGGTAGCGAGCGCGAGCCGAGGATGC
CGGTACTGCTGCTGCTGCGGCGCAAGAGCGCGCGGCCGGAAGAGGGCGGGCCAGGGCAGCTCTGAG
CTGGCCGCGGCTGCTCTCGCGCTTCCGGTCCCGGGAAGGCTCCCGCGAAGCCGGCCCGCCGAGGAG
CAGCCGCGCAAACGGTGCCGCTGCCCTCGCCCGCAGTT

AG**CGGACCG**ACGCGTACGCGGCCGCTCGAGCAGAACTCATCTCAGAAGAGGATCTGGCAGCAAATGATATCC
TGGATTACAAGGATGACGACGATAAGGTTTAA

Protein Sequence: >RC207664 representing NM_080825
Red=Cloning site Green=Tags(s)

MGNYSKRTKAPKQARKERPADMKAWWWKSFNLHLTRKKPATRIVLILPLDKRQLANAGQRIDYASGA
GLGSPAAPRLRGAGEGSEPRMPVLLLLRRQEARRPEEGGARAALSWPRLLSRFRSPGKAPREAGPAEE
QPRKRCRCPRPQL

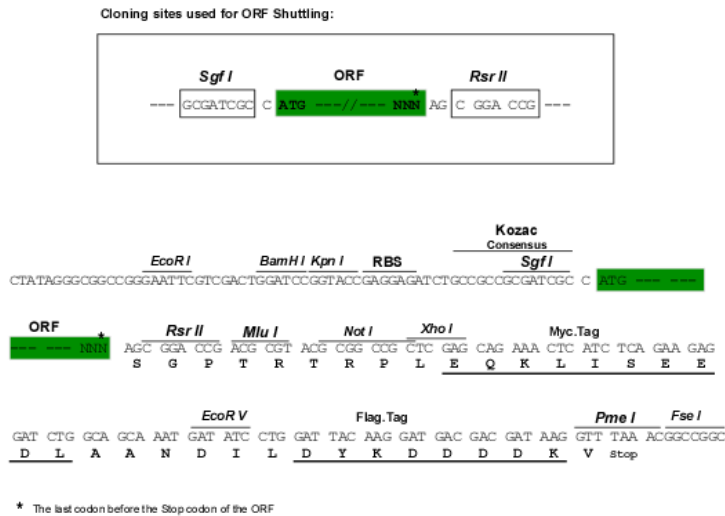
SGPTRRRLEQKLI SEEDLAANDILDYKDDDDKV

Chromatograms: https://cdn.origene.com/chromatograms/mk8113_d10.zip



Restriction Sites: SgfI-RsrII

Cloning Scheme:



ACCN: NM_080825

ORF Size: 459 bp

OTI Disclaimer: The molecular sequence of this clone aligns with the gene accession number as a point of reference only. However, individual transcript sequences of the same gene can differ through naturally occurring variations (e.g. polymorphisms), each with its own valid existence. This clone is substantially in agreement with the reference, but a complete review of all prevailing variants is recommended prior to use. [More info](#)

OTI Annotation: This clone was engineered to express the complete ORF with an expression tag. Expression varies depending on the nature of the gene.

Components: The ORF clone is ion-exchange column purified and shipped in a 2D barcoded Matrix tube containing 10ug of transfection-ready, dried plasmid DNA (reconstitute with 100 ul of water).

Reconstitution Method:

1. Centrifuge at 5,000xg for 5min.
2. Carefully open the tube and add 100ul of sterile water to dissolve the DNA.
3. Close the tube and incubate for 10 minutes at room temperature.
4. Briefly vortex the tube and then do a quick spin (less than 5000xg) to concentrate the liquid at the bottom.
5. Store the suspended plasmid at -20°C. The DNA is stable for at least one year from date of shipping when stored at -20°C.

RefSeq: [NM_080825.4](#)

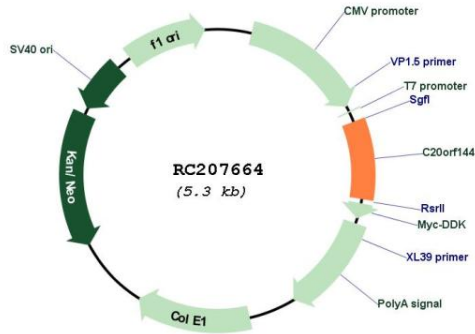
RefSeq Size: 586 bp

RefSeq ORF: 462 bp

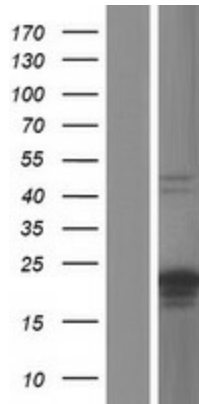
Locus ID: 128864

UniProt ID: [Q9BQM9](#)
 Cytogenetics: 20q11.22
 MW: 17.2 kDa

Product images:



Circular map for RC207664



Western blot validation of overexpression lysate (Cat# [LY409028]) using anti-DDK antibody (Cat# [TA50011-100]). Left: Cell lysates from untransfected HEK293T cells; Right: Cell lysates from HEK293T cells transfected with RC207664 using transfection reagent MegaTran 2.0 (Cat# [TT210002]).