

Product datasheet for **RC207662**

OXR1 (NM_181354) Human Tagged ORF Clone

Product data:

Product Type:	Expression Plasmids
Product Name:	OXR1 (NM_181354) Human Tagged ORF Clone
Tag:	Myc-DDK
Symbol:	OXR1
Synonyms:	CHEGDD; Nbla00307; TLDC3
Mammalian Cell Selection:	Neomycin
Vector:	pCMV6-Entry (PS100001)
E. coli Selection:	Kanamycin (25 ug/mL)



[View online »](#)

ORF Nucleotide
Sequence:

>RC207662 ORF sequence
Red=Cloning site Blue=ORF Green=Tags(s)

TTTTGTAATACGACTCACTATAGGGCGGCCGGAATTCGTCGACTGGATCCGGTACCGAGGAGATCTGCC
GCC**CGGATCGCC**

ATGCTCTTTTCAGAAACCTAAAGGGACTATTGAGTATACTGTTGAATCAAGGGATTCTTTGAATAGCATAG
CCCTGAAGTTTGATACAACACCTAACGAACTTGTTCAATTAATAAGTTATTCTCCCGAGCAGTTGTTAC
TGGACAGGTTCTGTATGTTCTGATCCTGAATATGTCTCCAGTGTGAGAGCTCTCCATCTTAAGCCCC
GTAAGTCTCTGTACCAACATCATCTGAGGCTGAATTTGATAAGACCTAATCCTGATGCCATCCAA
CAGAAGCAACTCCCTCATCTACTTTCACTGGTATTGACCTGCACGAGTTGTATCTTCAACTTCTGAGGA
GGAGGAAGCATTACTGAGAAATTTCTAAAATTAATTGCAAATATATTACCAGTGGCAAGGGCACAGTC
AGTGGTGTGCTGCTAGTTACACCAAATAATATAATGTTTGATCCACATAAAAAATGACCCCTTTGGTTCAAG
AGAATGGCTGTGAGGAATATGGCATCATGTGTCCAATGGAAGAGGTGATGTCAGCTGCAATGTACAAGA
AATTTTGGATAGCAAAATAAAGGAATCTTTACCCATAGATATAGATCAGCTATCAGGAAGGGACTTCTGC
CATTCAAAGAAAATGACAGGAAGTAACACTGAGGAAAATAGACTCAAGAATCCGAGATGCAGGTAATGATA
GTGCCAGCACTGCTCCTAGGAGCACTGAGGAGTCTCTTTCTGAAGATGTGTTACAGAATCAGAACCTTC
CCCTATACGAGAGGAGCTTGATCTTCAGATGAACTGCGACAAGATAAATCTTCTGGTGCCTCATCAGAA
TCTGTGCAAACTGTCAATCAGGCTGAAGTAGAAAGTCTGACAGTCAAATCAGAATCTACTGGTACTCCTG
GTCACTTAAGATCTGATACTGAACATCTACAAATGAAGTTGGGACTTTATGTCATAAACTGATTTAAA
TAATCTTGAATGGCCATTAAGGAAGATCAGATTGCAGATAACTTTCAAGGAATATCAGGTCCTAAAGAA
GACAGCACAAGTATAAAAGTAATTGACACCAGGATTCTTTCTCATGAGAATCGTTACACCAAGAAG
AGAGTCAAAAAGAAAATATGCCTTGTGGGAAACAGCAGAATTTAAACAAAAGCAAAGTGTAAACAAAGG
AAAACAAGGAAAGGAGCAAAATCAGGACTCACAGACAGAGGCAGAAGAGCTACGCAAACTTTGAAAACC
CATACTATGCAACAACTAAACAGCAAAGGAAAATATCAACAAGTGTACAAAAAGAAGCTAAGCATA
AAATTACATCTGCTGATGGACACATAGAAAGTTCTGCACTTTTAAAAGAAAAGCAAAGGCATCGATTACA
TAAGTTCTTGTGCTCAGAGTTGGAAAACCAATGAGGAAAACGTTTGTATCTCAAGCAAGTGTACAATG
CAACAGTATGCACAGAGAGATAAGAAACATGAATATTGGTTTGTGTCACACAAGAAAGGACAGATCACT
TGTATGCCTTCTTCATTCAGTGGAGTCCAGAAAATATGCAGAAGATACTGGCGAATATACCAGAGAACC
TGGATTTATAGTAGTAAAAAGATTGAGGAGTCTGAAACAATTGAGGATTCTAGTAATCAAGCAGCAGCC
AGAGAATGGGAGATTACTACAAGGAAGACATAAATTCAAAGCAGTTGCTACAGTGAAAGCAGACCTGG
AGTCTGAATCTTTTCGACCAAACCTAAGTGATCCCAAGTAACTTTACTGCCAGATCAAATGAAAAGCT
TACCAAGCATCTCCACCAAGAACAATTGGCTATCCATGGACTCTGTTTATGGTACTGGAAAACATGGC
ACAAGCTTGAAAACCTTTATCGAACAATGACAGGTTTAGACACCCCAAGTGTGATGGTGATTAAGACA
GTGATGGACAGGTTTTTGGTGCCTTAGCATCTGAGCCACTGAAAGTGAGTGATGGCTTTTATGGTACTGG
AGAGACCTTTGTTTTTACATTCTGTCCGGAGTTTGAGGCTTTAAGTGGACAGGAGATAATGTTTTTT
ATCAAAGGAGACATGGATTCACTAGCTTTCGGTGGTGGAGGAGGAGAATTTGCGCTTTGGCTTGATGGAG
ATCTCTACCATGGAAGAAGCCATTCTTGTAACACGTTTGGGAATCGTACACTTTCTAAGAAGGAAGATT
CTTTATCCAAGATATTGAAATCTGGGCTTTTGAA

ACGCGTACGCGGCCGCTCGAGCAGAACTCATCTCAGAAGAGGATCTGGCAGCAAATGATATCCTGGATT
ACAAGGATGACGACGATAAGGTTTAA

Protein Sequence: >RC207662 protein sequence
Red=Cloning site Green=Tags(s)

```
MSFQKPKGTIEYTVESRDSLNSIALKFDTTPNELVQLNKLFSRAVVTGQVLYVPDPEYVSSVESSPSLSP
VSPLSPTSSEAEFDKTTNPDVHPTAATPSSFTGIRPARVVSSTSEEEAFTEKFLKINCKYITSGKGTV
SGVLLVTPNNIMFDPHKNDPLVQENGCEEYIMCPMEEVMSAAMYKEILDSKIKESLPIDIDQLSGRDFC
HSKKMTGSNTEEIDSRIRDAGNDSASTAPRSTEEESLSEDFVTESELSPIREELVSSDELQDKSSGASSE
SVQTVNQAEVESLTVKSESTGTPGHLRSDTEHSTNEVGTLCCHKTDLNNLEMAIKEDQIADNFQGISGPKE
DSTSIKGNDSQDSFLHENS LHQEE SQENMPCGETAEFKQKQSVNKGKQKEQNQDSQTEAEELRKLWKT
HTMQQTKQORENIQQVSQKEAKHKITSADGHISSALLKEKQRHRLHKFLCLRVGKPMRKTFFVSQASATM
QQYAQRDKKHEYWFAVPQERTDHLIAFFIQWSPEIYAEDTGEYTRPGFIVVKKIEESETIEDSSNQAAA
REWEITTREDINSKQVATVKADLESEFRPNLSDPSELLLPDQIEKLTKHLPPRTIGYPWTLVYGTGKHG
TSLKTLYRTMTGLDTPVLMVIKDSGQVFGALASEPLKVSDFYGTGETVFVTFCEFEVFKWTGDNMFF
IKGDMSLAFGGGGGEFALWLDGDLYHGRSHSCKTFGNRTL SKKEDFFIQDIEIWAFF
```

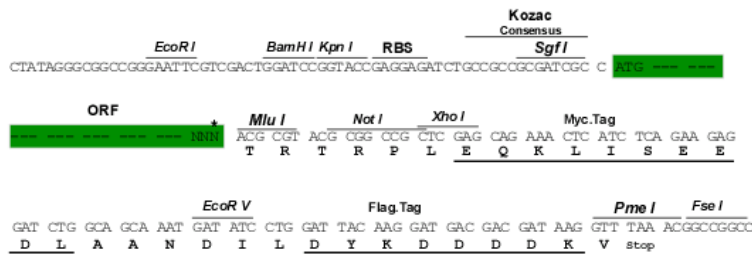
TRTRPLEQKLISEEDLANDILDYKDDDDKV

Chromatograms: https://cdn.origene.com/chromatograms/mk6694_a11.zip

Restriction Sites: SgfI-MluI

Cloning Scheme:

Cloning sites used for ORF Shuttling:



* The last codon before the Stop codon of the ORF

ACCN: NM_181354

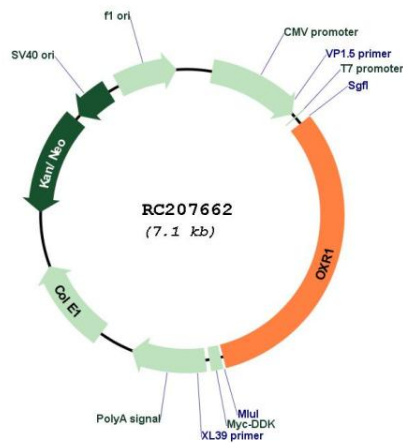
ORF Size: 2274 bp

OTI Disclaimer: The molecular sequence of this clone aligns with the gene accession number as a point of reference only. However, individual transcript sequences of the same gene can differ through naturally occurring variations (e.g. polymorphisms), each with its own valid existence. This clone is substantially in agreement with the reference, but a complete review of all prevailing variants is recommended prior to use. [More info](#)

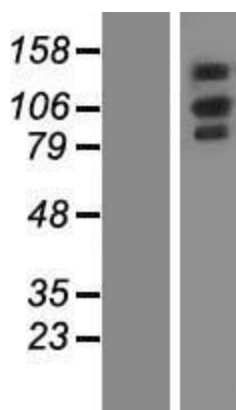
OTI Annotation: This clone was engineered to express the complete ORF with an expression tag. Expression varies depending on the nature of the gene.

- Components:** The ORF clone is ion-exchange column purified and shipped in a 2D barcoded Matrix tube containing 10ug of transfection-ready, dried plasmid DNA (reconstitute with 100 ul of water).
- Reconstitution Method:**
1. Centrifuge at 5,000xg for 5min.
 2. Carefully open the tube and add 100ul of sterile water to dissolve the DNA.
 3. Close the tube and incubate for 10 minutes at room temperature.
 4. Briefly vortex the tube and then do a quick spin (less than 5000xg) to concentrate the liquid at the bottom.
 5. Store the suspended plasmid at -20°C. The DNA is stable for at least one year from date of shipping when stored at -20°C.
- RefSeq:** [NM_181354.3](#), [NP_851999.1](#)
- RefSeq Size:** 4465 bp
- RefSeq ORF:** 2520 bp
- Locus ID:** 55074
- UniProt ID:** [Q8N573](#)
- Cytogenetics:** 8q23.1
- MW:** 85 kDa
- Gene Summary:** May be involved in protection from oxidative damage.[UniProtKB/Swiss-Prot Function]

Product images:



Circular map for RC207662



Western blot validation of overexpression lysate (Cat# [LY405747]) using anti-DDK antibody (Cat# [TA50011-100]). Left: Cell lysates from untransfected HEK293T cells; Right: Cell lysates from HEK293T cells transfected with RC207662 using transfection reagent MegaTran 2.0 (Cat# [TT210002]).