

## Product datasheet for **RC207660**

### FCRL1 (NM\_052938) Human Tagged ORF Clone

#### Product data:

Product Type:	Expression Plasmids
Product Name:	FCRL1 (NM_052938) Human Tagged ORF Clone
Tag:	Myc-DDK
Symbol:	FCRL1
Synonyms:	CD307a; FCRH1; IFGP1; IRTA5
Mammalian Cell Selection:	Neomycin
Vector:	pCMV6-Entry (PS100001)
E. coli Selection:	Kanamycin (25 ug/mL)



[View online »](#)

**ORF Nucleotide Sequence:**

>RC207660 ORF sequence  
 Red=Cloning site Blue=ORF Green=Tags(s)

TTTTGTAATACGACTCACTATAGGGCGGCCGGAATTCGTCGACTGGATCCGGTACCGAGGAGATCTGCC  
 GCCCGCATCGCC

ATGCTGCCGAGGCTGTTGCTGTTGATCTGTGCTCCACTCTGTGAACCTGCCGAGCTGTTTTGATAGCCA  
 GCCCTCCATCCACAGAGGGGAGCCAGTGACCCTGACGTGTAAGATGCCCTTTCTACAGAGTTCAGA  
 TGCCAGTTCCAGTTCTGCTTTTTCAGAGACACCCGGCCTTGGGCCAGGCTGGAGCAGCTCCCCAAG  
 CTCAGATCGCTGCCATGTGAAAGAAGACACAGGGTCATACTGGTGCAGGCACAGACAATGGCGTCCA  
 AAGTCTTGAGGAGCAGGAGATCCAGATAAATGTGCACAGGGTCCCTGTCGCTGATGTGAGCTTGGAGAC  
 TCAGCCCCCAGGAGGACAGGTGATGGAGGGAGACAGGCTGGTCCCTCATCTGCTCAGTTGCTATGGGCACA  
 GGAGACATCACCTTCTTTGGTACAAAGGGGCTGTAGGTTAAACCTTCAGTCAAAGACCCAGCGTTTAC  
 TGACAGCAGAGTATGAGATTCCTTCAGTGAGGGAGAGTGTGCTGAGCAATATTACTGTGTAGTGAAAA  
 TGCTATGGTCCCAGCCCAGTGGGCTGGTGGATCACTGTGAGCAATCCCGGTGTCTCGCCCAATCCTC  
 ATGCTCAGGGCTCCCAGGGCCCAGGCTGCAGTGGAGGATGTGCTGGAGCTTCACTGTGAGGCCCTGAGAG  
 GCTCTCCTCCGATCCTGTACTGGTTTTATCACGAGGATATCACCTGGGGAGCAGGTCGGCCCCCTCTGG  
 AGGAGGAGCCTCCTTCAACCTTTCCCTGACTGAAGAACATTCTGGAACTACTCCTGTGAGGCCAACAAAT  
 GGCTGGGGGCCAGCGCAGTGAGGCGGTGACACTCAACTTCACAGTGCCTACTGGGGCCAGAAGCAATC  
 ATCTTACCTCAGGAGTCAATTGAGGGGCTGCTCAGCACCCTTGGTCCAGCCACCGTGGCCTTATTATTTTG  
 CTACGGCTCAAAGAAAAATAGGAAGACGTTTCCAGCCAGGATCCACTCAGGAGCCTTCCAGCCCTCTA  
 CCCAAGAGTTTACCTACCTCACTCACCTACCCAGGGCAGCTACAGCCTATATATGAAAATGTGAATG  
 TTGTAAGTGGGGATGAGGTTTATTCACTGGCGTACTATAACCAGCCGGAGCAGGAATCAGTAGCAGCAGA  
 AACCTGGGGACACATATGGAGGACAAGGTTTCCCTTAGACATCTATTCCAGGCTGAGGAAAGCAAACATT  
 ACAGATGTGGACTATGAAGATGCTATG

ACGCGTACGCGGCCGCTCGAGCAGAACTCATCTCAGAAGAGGATCTGGCAGCAATGATATCCTGGATT  
 ACAAGGATGACGACGATAAGGTTTAA

**Protein Sequence:**

>RC207660 protein sequence  
 Red=Cloning site Green=Tags(s)

MLPRLLLIICAPLCEPAELFLIASPSHPTGSPVTLTCKMPFLQSSDAQFQFCFFRDTRALGPGWSSSPK  
 LQIAAMWKEDTGSYWCEAQTMAKVLRSRRSQINVHRVPVADVLETQPPGGQVMEDRLVLICSVAMGT  
 GDITFLWYKGAVLNLQSKTQRSLTAEYEIPSVRESDAEQYYCAENGYGPPSGLVITVRIPVSRPIL  
 MLRAPRAQAAVEDVLELHCEALRGSPPILYWFYHEDITLGSRSAPSGGGASFNLSTEEHSGNYSCEANN  
 GLGAQRSEAVTLNFTVPTGARSNHLTSGVIEGLLSTLGPATVALLFCYGLKRKIGRRSARDPLRSLPSPL  
 PQEFTYLNSTPQGLQPIYENVNVVSGDEVYSLAYYNQPEQESVAAETLGTMEDKVSLEDIYSRLRKANI  
 TDVDYEDAM

TRTRPLEQKLISEEDLAANDILDYKDDDDKV

**Chromatograms:**

[https://cdn.origene.com/chromatograms/mk6019\\_a07.zip](https://cdn.origene.com/chromatograms/mk6019_a07.zip)

**Restriction Sites:**

Sgfl-Mlul

**Cloning Scheme:**


**ACCN:** NM\_052938

**ORF Size:** 1287 bp

**OTI Disclaimer:** The molecular sequence of this clone aligns with the gene accession number as a point of reference only. However, individual transcript sequences of the same gene can differ through naturally occurring variations (e.g. polymorphisms), each with its own valid existence. This clone is substantially in agreement with the reference, but a complete review of all prevailing variants is recommended prior to use. [More info](#)

**OTI Annotation:** This clone was engineered to express the complete ORF with an expression tag. Expression varies depending on the nature of the gene.

**Components:** The ORF clone is ion-exchange column purified and shipped in a 2D barcoded Matrix tube containing 10ug of transfection-ready, dried plasmid DNA (reconstitute with 100 ul of water).

**Reconstitution Method:**

1. Centrifuge at 5,000xg for 5min.
2. Carefully open the tube and add 100ul of sterile water to dissolve the DNA.
3. Close the tube and incubate for 10 minutes at room temperature.
4. Briefly vortex the tube and then do a quick spin (less than 5000xg) to concentrate the liquid at the bottom.
5. Store the suspended plasmid at -20°C. The DNA is stable for at least one year from date of shipping when stored at -20°C.

**RefSeq:** [NM\\_052938.5](#)

**RefSeq Size:** 3116 bp

**RefSeq ORF:** 1290 bp

**Locus ID:** 115350

**UniProt ID:** [Q96LA6](#)

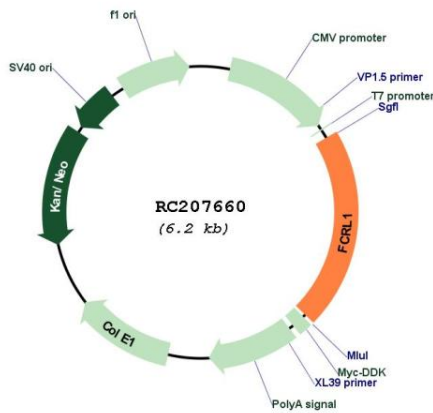
**Cytogenetics:** 1q23.1

**Protein Families:** Transmembrane

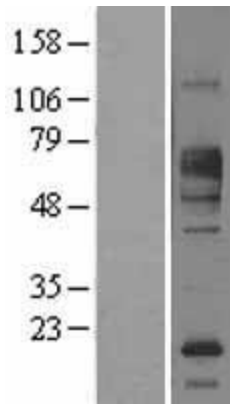
**MW:** 46.9 kDa

**Gene Summary:** This gene encodes a member of the immunoglobulin receptor superfamily and is one of several Fc receptor-like glycoproteins clustered on the long arm of chromosome 1. The encoded protein contains three extracellular C2-like immunoglobulin domains, a transmembrane domain and a cytoplasmic domain with two immunoreceptor-tyrosine activation motifs. This protein may play a role in the regulation of cancer cell growth. Alternative splicing results in multiple transcript variants. [provided by RefSeq, Apr 2009]

**Product images:**



Circular map for RC207660



Western blot validation of overexpression lysate (Cat# [LY403271]) using anti-DDK antibody (Cat# [TA50011-100]). Left: Cell lysates from untransfected HEK293T cells; Right: Cell lysates from HEK293T cells transfected with RC207660 using transfection reagent MegaTran 2.0 (Cat# [TT210002]).