

Product datasheet for RC207656

VSTM2L (NM_080607) Human Tagged ORF Clone

Product data:

Product Type: Expression Plasmids
Product Name: VSTM2L (NM_080607) Human Tagged ORF Clone
Tag: Myc-DDK
Symbol: VSTM2L
Synonyms: C20orf102; dj1118M15.2
Mammalian Cell Selection: Neomycin
Vector: pCMV6-Entry (PS100001)
E. coli Selection: Kanamycin (25 ug/mL)
ORF Nucleotide Sequence: >RC207656 ORF sequence
 Red=Cloning site Blue=ORF Green=Tags(s)

TTTTGTAATACGACTCACTATAGGGCGGCCGGAATTCGTCGACTGGATCCGGTACCGAGGAGATCTGCC
GCC**CGATCGCC**

ATGGGGGGCCCCGCTCGCGTAGCGCTGGGCGCCCTCCACTACCTGGCACTTTTCTGCAACTCGGCGGCG
CCACGCGGCCCGCCGACGCGCCCTGGGACAACACGTCTCCGGCCACGCCCTGTTACAGAGACACC
CCATGACATGACAGCACGGACGGCGGAGGACGTGGAGATGGCCTGCTCCTCCGCGGCAGCGGCTCCCC
TCCTACTCGTGGAGATCCAGTGGTGGTATGTACGGAGCCACGGGACTGGACCGACAAGCAGGCGTGGG
CCTCGAACCGCTAAAAGCATCTCAGCAGGAAGACGCAGGAAGGAGGCAACCAAAATAAGTGTGGTCAA
GGTGGTGGGAGCAACATCTCCACAAGCTGCGCCTGTCCGGGTGAAGCCACGGACGAAGTTCTCTAC
GAGTGCCGCGTATCGACTTCAGCGACGGCAAGGCCCGGACCAAGGTCAAGGCTACCTGCGGGTGC
AGCCAGGGGAGAACTCCGTCTGCATCTGCCGAAGCCCTCCCGCCGCGCCCGCCCGCCCGCCCA
GCCAGGAAGGAGCTGAGGAAGCGCTCGGTGGACCAGGAGGCCTGCAGCCTC

ACGCGTACGCGGCCGCTCGAGCAGAACTCATCTCAGAAGAGGATCTGGCAGCAATGATATCCTGGATT
ACAAGGATGACGACGATAAGGTTTAA

Protein Sequence: >RC207656 protein sequence
 Red=Cloning site Green=Tags(s)

MGAPLAVALGALHYLALFLQLGGATRPAGHAPWDNHVSGHALFTETPHDMTARTGEDVEMACSFRRGSGP
SYSLEIQWVYVRSRHDWTDKQAWASNQLKASQQEDAGKEATKISVVKVVGSNISHKLRLSRVKPTDEGSY
ECRVIDFSDGKARHHKVKAYLRVQPGENSVLHLPPEAPPAAPPPPKPKGKELRKRSDQEACSL

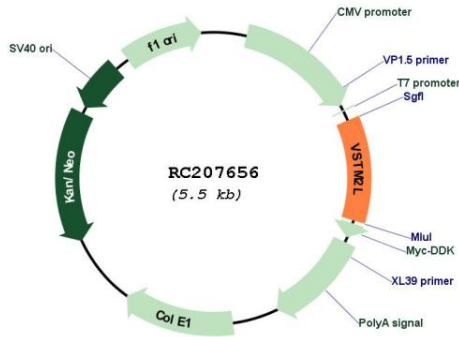
TRTRPLEQKLISEEDLAANDILDYKDDDDKV



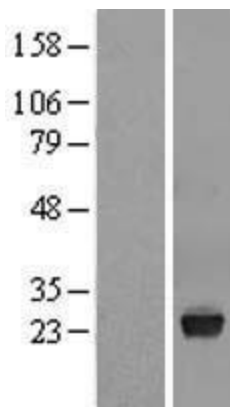
[View online »](#)

UniProt ID: [Q96N03](#)
 Cytogenetics: 20q11.23
 MW: 22.3 kDa

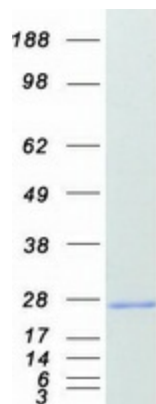
Product images:



Circular map for RC207656



Western blot validation of overexpression lysate (Cat# [LY409151]) using anti-DDK antibody (Cat# [TA50011-100]). Left: Cell lysates from untransfected HEK293T cells; Right: Cell lysates from HEK293T cells transfected with RC207656 using transfection reagent MegaTran 2.0 (Cat# [TT210002]).



Coomassie blue staining of purified VSTM2L protein (Cat# [TP307656]). The protein was produced from HEK293T cells transfected with VSTM2L cDNA clone (Cat# RC207656) using MegaTran 2.0 (Cat# [TT210002]).