

Product datasheet for **RC207653**

TLK1 (NM_012290) Human Tagged ORF Clone

Product data:

Product Type:	Expression Plasmids
Product Name:	TLK1 (NM_012290) Human Tagged ORF Clone
Tag:	Myc-DDK
Symbol:	TLK1
Synonyms:	PKU-beta
Mammalian Cell Selection:	Neomycin
Vector:	pCMV6-Entry (PS100001)
E. coli Selection:	Kanamycin (25 ug/mL)



[View online »](#)

ORF Nucleotide
Sequence:

>RC207653 ORF sequence
Red=Cloning site Blue=ORF Green=Tags(s)

TTTTGTAATACGACTCACTATAGGGCGGCCGGGAATTCGTGACTGGATCCGGTACCGAGGAGATCTGCC
GCC**CGGATCGCC**

ATGAGTGTCCAAAGTAGCAGTGGAAAGTTTGGAGGGCCGCCATCTTGGTCCCAGCTCTCCACGTCTCCAA
CCCCGGGCTCGGCGGCGGCCAGGTCCCTGCTGAATCACACGCGCCATCCGGGAGGCCAGGGAAGG
TGCAATGGATGAGCTTCATAGTCTGGATCCAAGAAGGCAAGAGTTATTGGAAGCTAGATTTACTGGAGTT
GCAAGTGGGAGCACTGGAAGTACGGCAGTTGCAGTGTGGAGCTAAAGCCTCAACAAATAACGAAAGCT
CTAATCACAGTTTTGGAAGCTTGGGATCTTTAAGTGACAAAGAATCAGAGACACCGGAGAAGAAACAATC
GGAATCATCCAGGGGAAGAAAGAGAAAAGCAGAAAACCAGAATGAAAGTAGTCAGGAAAAAGTATTGGG
GGACGTGGCCACAAAATTAGCGACTATTTGAATACCAGGGTGGAAATGGCTCAAGTCCAGTAAGAGGCA
TACCTCCTGCAATCCGTTCTCCTCAAAATTCACATTCACATTCCTCCTCCTCATCTGTTCCGACCGAA
TAGCCCTTCTCCTACTGCATTAGCATTGGGGACCACCCTATTGTACAACCAAAGCAATTATCCTTTAAA
ATTATTACAGACTGATCTACAATGCTGAAATTAGCAGCATTAGAAAGTAATAAAATCCAGGACCTGGAAA
AGAAGGAGGGACGTATAGATGATTTGCTCAGGGCTAACTGTGATCTCAGACGGCAATAGATGAACAACA
AAAATTACTTGAAAAATACAAAGAACGATTAATAAAGTGCATATCAATGAGCAAGAACTTCTTATTGAA
AAGAGTACACAAGAAAAGCTGTCAAGCAGAGAGAAGAGTATGCAAGATCGATTACGCCTTGGGCACTTTA
CAACAGTTAGACATGGCGCTTCATTTACTGAACAATGGACAGATGGTTTTGCATTTCAGAATCTTGTGAA
GCAACAAGAAATGGGTGAATCAGCAAAGGGAAGATATTGAAAGGCAAAGGAAAATTCTAGCCAAACGCAA
CCTCCCACAGCTAATAATTCTCAGGCACCCTCTACCAATTCTGAACCAAAAACAAAGGAAAAACAAAGCAG
TCAATGGAGCAGAGAATGATCCCTTTGTTAGACCAAATTTACCACAATGTTGACTTTGGCAGAATATCA
TGAACAGGAAGAAATTTCAAACCTTAGACTAGGACATCTCAAAAAGGAAGAGGCAGAAATCCAGGCAGAA
CTTGAACGTTTGGAAAGAGTCAGAAATCTTACATACGTGAGCTGAAAAGAATAAACAATGAAGATAATT
CACAGTCAAAGATCACCCAACATTAATGAAAGATATTTACTTTCATCTGCTTGGTAGAGGTGGCTT
TAGTGAAGTGATAAGGCTTTTGACCTTTATGAACAAAGATATGCTGCTGTGAAGATACATCAGCTTAAT
AAAAGCTGGAGAGATGAGAAGAAAGAAAACCTACCACAAACATGCCTGCAGAGAGTATAGAATACACAAAG
AACTGGATCACCCAGAATAGTTAACTCTATGATTATTTCTCCTGGATACAGATACGTTTTGTACAGT
GTTAGAATACTGTGAAGGCAATGACTTGGATTTCTATCTGAAGCAACACAAGTTAATGTCAGAGAAAGAA
GCTCGGCTCTATTGTAATGCAGATTGTAATGCTAAGATATCTCAATGAGATCAAACCCCTATTATAC
ATTATGATCTTAAGCCAGGAAACATCCTACTGGTAGATGGAACAGCATGTGGTGAATCAAATCACTGA
TTTTGGTCTGTCCAAGATTATGGATGATGATAGCTATGGTGTAGATGGAATGGATCTAACTCCCAGGGG
GCAGGCACTTACTGGTATTTACCTCCTGAGTGTGTTGTAGTTGGAAAAGAGCCACCAAAGATTTCCAACA
AGGTTGATGATGGTTCGGTTGGAGTCACTTTCTTTAGTGTCTTTATGGTAGAAAGCCATTTGGTCACAA
TCAATCTCAACAAGACATTTCTCAAGAAAATACAATATTAAGGACACAGAAAGTCCAGTTCCCTGTAAAA
CCGTTGTAAGCAGTGAAGCCAAGGCATTTATAAGACGCTGTTTGGCATATCGAAAAGAAGATCGATTTG
ATGTGCACCAGCTGGCAAATGACCCATACCTTCTCCCACATGAGAAGATCAAATCTTCAGGAAACCT
ACATATGGCTGGGCTGACAGCATCCCTACACCCCTTCTTCAAGCATAATTACTTAC

AG**CGGACCG**ACGCGTACGCGGCCGCTCGAGCAGAACTCATCTCAGAAGAGGATCTGGCAGCAAATGATATCC
TGGATTACAAGGATGACGACGATAAGGTTTAA

Protein Sequence: >RC207653 protein sequence
Red=Cloning site Green=Tags(s)

```
MSVQSSSGSLEGPPSWSQLSTSPTPGSAARLLNHTPPSGRPREGAMDELHSLDPRRQELLEARFTGV
ASGSTGSTGSCSVGAKASTNNNESSNHSGSLGSLSDKESETPEKKQSESSRGRKKAENQNESSQKSIG
GRGHKISDYFEYQGGNGSSPVRGIPPAIRSPQNSHSHSTPSSSVRPNSPPTALAFGDHPIVQPKQLSFK
IIQTDLTMLKLAALSNKIQDLEKKEGRIDDLRANCDLRRQIDEQQKLEKYKERLNKICISMSKLLIE
KSTQEKLSREKSMQDRLRLGHFTTVRHGASFTQWTDGFAFQNLVKQEQEWVNQQREDIERQRKLLAKRK
PPTANNSQAPSTNSEPKQRKNKAVNGAENDPFVVRPNLPQLLTLAEYHEQEEIFKLRLGHLKKEEAEIQAE
LERLERVRNLHIRELKRINNEDNSQFKDHPTLNERYLLHLLGRGGFSEVYKAFDLYEQRYAAVKIHQLN
KSWRDEKKENYHKHACREYRIHKELDHPRIKLYDYFLDQDTDFCTVLEYCEGNDLDFYKQHKLMSEKE
ARSIVMQIVNALRYLNEIKPPIIHVDLKPGNILLVDGTACGEIKITDFGLSKIMDDSYGVDGMDLTSQG
AGTYWYLPPECFVVGKEPPKISNKVDVWSVGVIFFOCLYGRKPFGHNQSQQDILQENTILKATEVQFPVK
PVVSSEAKAFIRRCLAYRKEDRFVHQLANDPYLLPHMRRSNSSGNLHMAGLTASPTPPSSSIITY
```

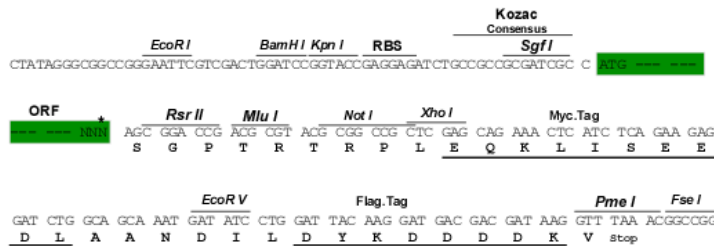
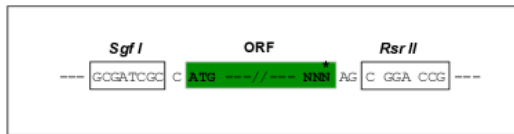
SGPTRTRPLEQKLISEEDLAANDILDYKDDDDKV

Chromatograms: https://cdn.origene.com/chromatograms/mk6185_d01.zip

Restriction Sites: SgfI-RsrII

Cloning Scheme:

Cloning sites used for ORF Shutting:



* The last codon before the Stop codon of the ORF

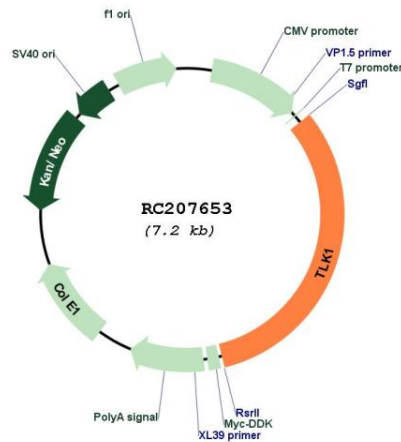
ACCN: NM_012290

ORF Size: 2298 bp

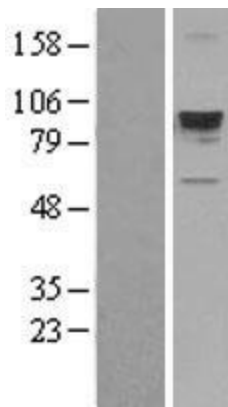
OTI Disclaimer: The molecular sequence of this clone aligns with the gene accession number as a point of reference only. However, individual transcript sequences of the same gene can differ through naturally occurring variations (e.g. polymorphisms), each with its own valid existence. This clone is substantially in agreement with the reference, but a complete review of all prevailing variants is recommended prior to use. [More info](#)

OTI Annotation: This clone was engineered to express the complete ORF with an expression tag. Expression varies depending on the nature of the gene.

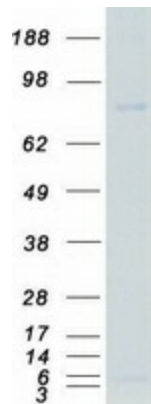
Components:	The ORF clone is ion-exchange column purified and shipped in a 2D barcoded Matrix tube containing 10ug of transfection-ready, dried plasmid DNA (reconstitute with 100 ul of water).
Reconstitution Method:	<ol style="list-style-type: none">1. Centrifuge at 5,000xg for 5min.2. Carefully open the tube and add 100ul of sterile water to dissolve the DNA.3. Close the tube and incubate for 10 minutes at room temperature.4. Briefly vortex the tube and then do a quick spin (less than 5000xg) to concentrate the liquid at the bottom.5. Store the suspended plasmid at -20°C. The DNA is stable for at least one year from date of shipping when stored at -20°C.
RefSeq:	<u>NM_012290.3</u> , <u>NP_036422.3</u>
RefSeq Size:	5751 bp
RefSeq ORF:	2301 bp
Locus ID:	9874
UniProt ID:	<u>Q9UKI8</u>
Cytogenetics:	2q31.1
Domains:	pkinase, TyrKc, S_TKc
Protein Families:	Druggable Genome, Protein Kinase
MW:	86.7 kDa
Gene Summary:	The protein encoded by this gene is a serine/threonine kinase that may be involved in the regulation of chromatin assembly. The encoded protein is only active when it is phosphorylated, and this phosphorylation is cell cycle-dependent, with the maximal activity of this protein coming during S phase. The catalytic activity of this protein is diminished by DNA damage and by blockage of DNA replication. Three transcript variants encoding different isoforms have been found for this gene. [provided by RefSeq, Nov 2011]

Product images:


Circular map for RC207653



Western blot validation of overexpression lysate (Cat# [LY402184]) using anti-DDK antibody (Cat# [TA50011-100]). Left: Cell lysates from untransfected HEK293T cells; Right: Cell lysates from HEK293T cells transfected with RC207653 using transfection reagent MegaTran 2.0 (Cat# [TT210002]).



Coomassie blue staining of purified TLK1 protein (Cat# [TP307653]). The protein was produced from HEK293T cells transfected with TLK1 cDNA clone (Cat# RC207653) using MegaTran 2.0 (Cat# [TT210002]).