

## Product datasheet for **RC207642**

### **RNF168 (NM\_152617) Human Tagged ORF Clone**

#### **Product data:**

Product Type:	Expression Plasmids
Product Name:	RNF168 (NM_152617) Human Tagged ORF Clone
Tag:	Myc-DDK
Symbol:	RNF168
Synonyms:	hRNF168; RIDL
Mammalian Cell Selection:	Neomycin
Vector:	pCMV6-Entry (PS100001)
E. coli Selection:	Kanamycin (25 ug/mL)



[View online »](#)

**ORF Nucleotide Sequence:**

>RC207642 ORF sequence  
 Red=Cloning site Blue=ORF Green=Tags(s)

TTTTGTAATACGACTCACTATAGGGCGGCCGGAATTCGTCGACTGGATCCGGTACCGAGGAGATCTGCC  
 GCCCGCATCGCC

ATGGCTCTACCCAAGACGCCATCCCCTCGCTGTCCGAGTGCCAGTGCGGGATCTGCATGGAATCCTCG  
 TGGAGCCCGTCACCTCCCGTGTAAACCACACGCTGTGTAACCGTGCTTCCAGTCGACCGTCGAAAAGGC  
 GAGTTTATGCTGTCCCTTCTGTCCGCCGCGGGTATCGTCGTGGACTCGGTACCATACCCGAAGAAATCT  
 CTCGTCAACGTGGAAGTGTGGACGATAATCAAAAACACTATCCCAGGGAGTGCAAGCTTAGAGCGTCTG  
 GCCAAGAATCAGAGGAAGTGGCTGATGACTATCAGCCAGTTCTGTCTGCTCAGTAAACCTGGGAACTGAG  
 AAGAGAATATGAAGAGGAAATAAGCAAGGTGGCGGCAGAGCGACGGCCAGCGAGGAAGAAGAAAACAAA  
 GCCAGTGAAGAATACATACAGAGTTGTTGGCAGAGGAGGAAGAAGAGGAAAAAGACAGGCAGAAAAAA  
 GGCGAAGAGCGATGGAAGAACAAGTAAAAGTATGAGGAACTGGCAAGAAAGCTAAGCATTGATATTA  
 CAATTTCTGTGAGGGAAGTATCTCGGCTTCTCCCTTGAATTCAGAAAATCTGATCCAGTTACACCCAAG  
 TCTGAAAAGAAAAGTAAAGACAAAACAAAGAACTGGAGATATTCAGAAATTTGACACCGAAAATCTC  
 AGTTTGGGTCAGCCTCACACTCTGAAGCTGTACAAGAAGTCAGGAAGACTCCGTATCTAAGGACATTGA  
 CAGTAGTGATAGGAAAAGCCCAACAGGGCAAGACACAGAAATAGAAGATATGCCGACACTTTCTCCACAG  
 ATATCCCTTGGAGTTGGAGAACAAGGTGCAGATTTCTCAATAGAGTCCCTATGCCATGGTTATGTGCC  
 GTGGTGCCGAATGGTACCATGAAGGAAACGTCAAAAACAGACCAAGCAATCATGGGAAAGAGTTATGTGT  
 CTTAAGTCACGAGCGACCTAAAACCAGAGTTCCCTACTCGAAAGAACTGCAGTTATGCCTTGTGGCAGA  
 ACAGAAAGTGGGTGCCCGCCACATCAGGGGTGACACAGACAAAATGGAACAACACAGGTGAGACAGAAA  
 ATGAAGAGTGTGCCTACTGATCAGTAAGGAGATTTCCAAAAGAAAAACCAAGAATCTTCTTTGAAGC  
 AGTCAAGGATCCATGCTTTTCTGCAAAAAGAAAGTGTCCCGCAATCTTCCAGATCAAGAGGAA  
 ACAGAAATAAACTTTACCAAAAAGTATAGATTTGGAGCATCTACTGTTTGGAGACATAAACAAGAAG  
 AACAGGACAGGTTATTGGCATTACAACCTCAGAAGGAGGTGGATAAAGAGCAATGGTGCCAAACCGGCA  
 AAAAGGATCCCCAGATGAGTATCACTTACGCGCTACATCTCCCTCCAGACAAAGTGTAAATGGACAG  
 AGGAAGAATCCCAAGATGGGAACCTCAAAGGCAAACTCACACAAGCATCCAACACCAGAGAGAGGCT  
 CAAGGGACAAAAATAGGCAAGTGTCTTTAAGATGCAGTTGAAGCAGTCAGTTAATAAGAAAGATGCC  
 AAATTCTACTAGAGTACTGTAAGGTATCCAAAAGTGTCACTCCCTACAGCCTAGCATTTCACAGAAA  
 AGTGTTTTTCAGATGTTTCAGAGATGCACAAAG

ACGCGTACGCGGCCGCTCGAGCAGAAACTCATCTCAGAAGAGGATCTGGCAGCAAATGATATCCTGGATT  
 ACAAGGATGACGACGATAAGGTTTAA

**Protein Sequence:**

>RC207642 protein sequence  
 Red=Cloning site Green=Tags(s)

MALPKDAIPSLSECQCGICMEILVEPVTLPCNHTLCKPCFQSTVEKASLCCPFCRRRVSSWTRYHTRRNS  
 LVNVELWTIIQKHYPRECKLRASGQEESEEVADDYQPVRLLSKPGELRREYEEEISKVAAERRASEEEENK  
 ASEEYIQRLLAEEEEERQAERRRAMEEQLKSDEELARKLSIDINNFCEGSISASPLNSRSDPVTPK  
 SEKSKNKNQRNTGDIQKYLTPKSQFGSASHSEAVQEVKDSVSKIDSSDRKSPTGQDTEIEDMPTLSPQ  
 ISLGVGEQGADSSIESPMPWLCACGAEWYHEGNVKTSPSNHGKELCVLSHERPKTRVPYSKETAVMPCGR  
 TESGCAPTSVGTQTNGNNTGETENEESCLLISKEISKRNQESSFEAVKDPFCSAKRRKVSPESSPDQEE  
 TEINFTQKLIIDLEHLLFERHKQEEQDRLLALQLQKEVDKEQMPNRPQKSPDEYHLRATSSPPDKVLNGQ  
 RKNPKDGNFKRQTHTKHPTPERGSRDKNRQVSLKMLKQSVNRRKMPNSTRDHCKVSKSAHSLQPSISQK  
 SVFQMFQRCTK

TRTRPLEQKLISEEDLAANDILDYKDDDDKV

**Chromatograms:**

[https://cdn.origene.com/chromatograms/mk6517\\_c01.zip](https://cdn.origene.com/chromatograms/mk6517_c01.zip)

**Restriction Sites:**

Sgfl-Mlul

**Cloning Scheme:**


**ACCN:** NM\_152617

**ORF Size:** 1713 bp

**OTI Disclaimer:** The molecular sequence of this clone aligns with the gene accession number as a point of reference only. However, individual transcript sequences of the same gene can differ through naturally occurring variations (e.g. polymorphisms), each with its own valid existence. This clone is substantially in agreement with the reference, but a complete review of all prevailing variants is recommended prior to use. [More info](#)

**OTI Annotation:** This clone was engineered to express the complete ORF with an expression tag. Expression varies depending on the nature of the gene.

**Components:** The ORF clone is ion-exchange column purified and shipped in a 2D barcoded Matrix tube containing 10ug of transfection-ready, dried plasmid DNA (reconstitute with 100 ul of water).

- Reconstitution Method:**
1. Centrifuge at 5,000xg for 5min.
  2. Carefully open the tube and add 100ul of sterile water to dissolve the DNA.
  3. Close the tube and incubate for 10 minutes at room temperature.
  4. Briefly vortex the tube and then do a quick spin (less than 5000xg) to concentrate the liquid at the bottom.
  5. Store the suspended plasmid at -20°C. The DNA is stable for at least one year from date of shipping when stored at -20°C.

**Note:** Plasmids are not sterile. For experiments where strict sterility is required, filtration with 0.22um filter is required.

**RefSeq:** [NM\\_152617.4](#)

**RefSeq Size:** 5365 bp

**RefSeq ORF:** 1716 bp

**Locus ID:** 165918

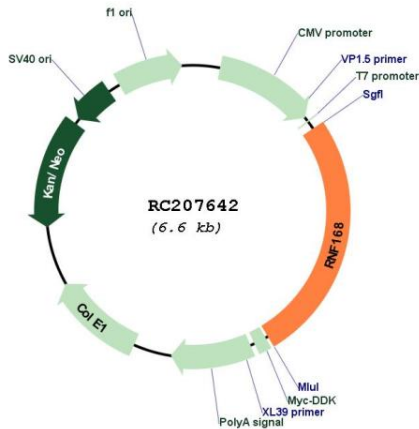
UniProt ID: [Q8IYW5](#)

Cytogenetics: 3q29

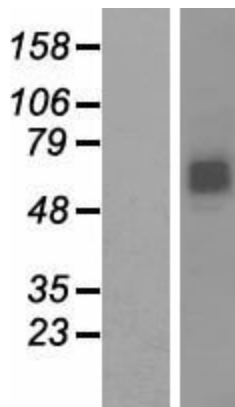
MW: 65 kDa

**Gene Summary:** This gene encodes an E3 ubiquitin ligase protein that contains a RING finger, a motif present in a variety of functionally distinct proteins and known to be involved in protein-DNA and protein-protein interactions. The protein is involved in DNA double-strand break (DSB) repair. Mutations in this gene result in Riddle syndrome. [provided by RefSeq, Sep 2011]

**Product images:**



Circular map for RC207642



Western blot validation of overexpression lysate (Cat# [LY407422]) using anti-DDK antibody (Cat# [TA50011-100]). Left: Cell lysates from untransfected HEK293T cells; Right: Cell lysates from HEK293T cells transfected with RC207642 using transfection reagent MegaTran 2.0 (Cat# [TT210002]).



Coomassie blue staining of purified RNF168 protein (Cat# [TP307642]). The protein was produced from HEK293T cells transfected with RNF168 cDNA clone (Cat# RC207642) using MegaTran 2.0 (Cat# [TT210002]).