

Product datasheet for **RC207640**

RIMKLB (NM_020734) Human Tagged ORF Clone

Product data:

Product Type:	Expression Plasmids
Product Name:	RIMKLB (NM_020734) Human Tagged ORF Clone
Tag:	Myc-DDK
Symbol:	RIMKLB
Synonyms:	FAM80B; NAAGS; NAAGS-I
Mammalian Cell Selection:	Neomycin
Vector:	pCMV6-Entry (PS100001)
E. coli Selection:	Kanamycin (25 ug/mL)
ORF Nucleotide Sequence:	>RC207640 representing NM_020734 Red=Cloning site Blue=ORF Green=Tags(s)

TTTTGTAATACGACTCACTATAGGGCGGCCGGAATTCGTCGACTGGATCCGGTACCGAGGAGATCTGCC
GCC**CGATCGCC**

ATGTGTAGTTCTGTGGCTGCCAAGTTGTGGTTTTTGACAGATCGTCGCATCAGGGAAGACTATCCTCAA
AAGAGATTTACGAGCATTGAAGGCCAAATGTTGTGAGGAGGAAGTGGACTTTAGGGCTGTGGTATGGA
TGAGGTGGTGTGACAATCGAGCAAGGAAACCTGGGTCTGCGGATCAATGGAGAGCTAATCACTGCCTAC
CCACAAGTGGTGGTAGTCAGAGTACCAACCCCTGGGTGCAAAGTGATAGTGACATCACTGTTTTGCGCC
ATCTAGAGAAGATGGGATGTCGGTTAATGAACCGACCTCAAGCCATCCTGAAGTAAATAAGTTCTG
GACATTTCAAGAGTTGGCTGGCCATGGTGTTCCTCTGCCGGATACCTTCTTATGGTGGCCACGAAAAT
TTTGCTAAAATGATTGATGAGGCTGAAGTTCTGGAGTTCCAATGGTAGTAAAGAATACGCGGGTCA
GAGGTAAGTGTCTTTCTGGCTCGAGATAAGCACCATTGGCTGATCTAAGCCATCTTATTCGCCATGA
AGCGCCATACCTGTTCCAGAAGTATGTTAAAGAGTCTCATGGACGGGATGTACGTGTCATTGTCGTGGGA
GGCCGTGTGGTTGGCACCATTGACGTTGTTCAACAGATGGGAGAATGCAAAGCAACTGCTCATTAGGTG
GTGTGGGGATGATGTGCTCATTGAGTGAACAAGGGAAGCAGCTAGCTATCCAGGTGTCTAATATCCTGGG
GATGGATGTGTGGCATTGACCTGCTGATGAAAGATGACGGCTCCTTCTGCGTCTGTGAGGCCAATGCA
AATGTAGGTTTCATCGCCTTTGATAAGGCTTGTAACTAGATGTAGCTGGTATCATAGCAGACTATGCCG
CCTCCCTTCTACCCTCTGGCCGGCTCACCCGGCGTATGTCCCTGCTCTCGTGGTGTCCACTGCCAGTGA
GACTAGTGAGCCGGAGCTGGGTCCCCAGCCAGCACTGCTGTTGACAACATGAGTGCAAGTTCAGCTCT
GTTGACAGCGACCCTGAAAGCACGGAGCGAGAGCTGCTACCAAGCTCCCAGGGGCTGTTCAACATGA
ACCAGCTGCTAGCCAATGAAATCAAACACTGTTGGAC

ACGCGTACGCGGCCGCTCGAGCAGAAACTCATCTCAGAAGAGGATCTGGCAGCAAATGATATCCTGGATT
ACAAGGATGACGACGATAAGGTTTAA



[View online >](#)

Protein Sequence: >RC207640 representing NM_020734
Red=Cloning site Green=Tags(s)

MCSSVAAKLWFLTDRRIREDYPQKEILRALKAKCEEELDFRAVVMDEVLTIEQGNLGLRINGELITAY
 PQVVVVVPTPWVQSDSDITVLRHLEKMGCRMLMNRPQAILNCVNKFWTFQELAGHGVPDPDTFSYGGHEN
 FAKMIDEAEVLEFPMVVKNTRGHRGKAVFLARDKHHLADLSHLIRHEAPYLFQKYVKESHGRDVRVIVVG
 GRVVGTMRLRCSTDGRMQSNCSLGGVGMCSLSEQGQLAIQVSNILGMDVCGIDLLMKDDGSFCVCEANA
 NVGFIAFDKACNLDVAGIIADYAASLLPSGRLTRRMSLLSVVSTASETSEPELGPPASTAVDNMSASSSS
 VSDPESTERELLTKLPGGLFNMNQLLANEIKLLVD

TRTRPLEQKLISEEDLAANDILDYKDDDDKV

Chromatograms: https://cdn.origene.com/chromatograms/mk8103_d05.zip

Restriction Sites: SgfI-MluI

Cloning Scheme:



ACCN: NM_020734

ORF Size: 1158 bp

OTI Disclaimer: The molecular sequence of this clone aligns with the gene accession number as a point of reference only. However, individual transcript sequences of the same gene can differ through naturally occurring variations (e.g. polymorphisms), each with its own valid existence. This clone is substantially in agreement with the reference, but a complete review of all prevailing variants is recommended prior to use. [More info](#)

OTI Annotation: This clone was engineered to express the complete ORF with an expression tag. Expression varies depending on the nature of the gene.

Components: The ORF clone is ion-exchange column purified and shipped in a 2D barcoded Matrix tube containing 10ug of transfection-ready, dried plasmid DNA (reconstitute with 100 ul of water).

Reconstitution Method:

1. Centrifuge at 5,000xg for 5min.
2. Carefully open the tube and add 100ul of sterile water to dissolve the DNA.
3. Close the tube and incubate for 10 minutes at room temperature.
4. Briefly vortex the tube and then do a quick spin (less than 5000xg) to concentrate the liquid at the bottom.
5. Store the suspended plasmid at -20°C. The DNA is stable for at least one year from date of shipping when stored at -20°C.

RefSeq: [NM_020734.4](#)

RefSeq Size: 5845 bp

RefSeq ORF: 1161 bp

Locus ID: 57494

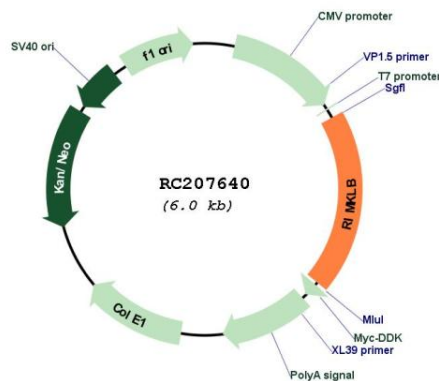
UniProt ID: [Q9ULI2](#)

Cytogenetics: 12p13.31

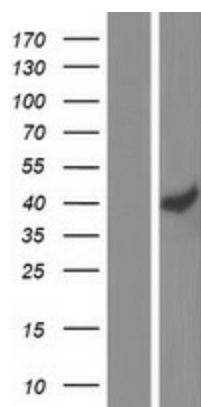
MW: 42.5 kDa

Gene Summary: Catalyzes the synthesis of beta-citryl-L-glutamate and N-acetyl-L-aspartyl-L-glutamate. Beta-citryl-L-glutamate is synthesized more efficiently than N-acetyl-L-aspartyl-L-glutamate. [UniProtKB/Swiss-Prot Function]

Product images:



Circular map for RC207640



Western blot validation of overexpression lysate (Cat# [LY412361]) using anti-DDK antibody (Cat# [TA50011-100]). Left: Cell lysates from untransfected HEK293T cells; Right: Cell lysates from HEK293T cells transfected with RC207640 using transfection reagent MegaTran 2.0 (Cat# [TT210002]).