

Product datasheet for **RC207636**

HDDC3 (NM_198527) Human Tagged ORF Clone

Product data:

Product Type: Expression Plasmids
Product Name: HDDC3 (NM_198527) Human Tagged ORF Clone
Tag: Myc-DDK
Symbol: HDDC3
Synonyms: (ppGpp)ase; MESH1
Mammalian Cell Selection: Neomycin
Vector: pCMV6-Entry (PS100001)
E. coli Selection: Kanamycin (25 ug/mL)
ORF Nucleotide Sequence: >RC207636 ORF sequence
Red=Cloning site Blue=ORF Green=Tags(s)

TTTTGTAATACGACTCACTATAGGGCGGCCGGAATTCGTCGACTGGATCCGGTACCGAGGAGATCTGCC
GCC**CGATCGCC**

ATGGGCTCTGAGGCGGCGCAGCTGCTGGAGGCTGCCGACTTCGCGGCTCGCAAGCACCGGCAGCAGCGGC
GGAAGGACCCCGAGGGGACCCCTACATCAACCACCCATCGGTGTGGCACGGATCTGACCCACGAGGC
GGGAATCACTGACATTGGTGTACAGGCGGCCCTGCTCCATGACACGGTGGAGGACACAGACACCACC
CTGGATGAGGTGGAGCTACACTTGGGGACAAGTGGCGCCTGGTGGAGGAGTAACAGATGACAAGA
CTCTGCCAAGCTGGAGAGAAAGAGGCTGCAGGTGGAGCAAGCGCCACAGTAGCCCCGGGGCCAAACT
GGTGAAGCTGGCAGACAAGCTGTACAATCTGAGGGACCTGAATCGCTGCACCCAGAGGTAATAACAA

AG**CGGACCG**ACGCGTACGCGGCCGCTCGAGCAGAACTCATCTCAGAAGAGGATCTGGCAGCAAATGATATCC
TGGATTACAAGGATGACGACGATAAGGTTAA

Protein Sequence: >RC207636 protein sequence
Red=Cloning site Green=Tags(s)

MGSEAAQLLEADFAARKHRQRRKDPEGTPYINHPIGVARILTHEAGITDIVVLQAALLHDTVEDTDTT
LDEVELHFGAQVRRLVVEEVTDDKTLPLKLERKRLQVEQAPHSSPGAKLVKLADKLYNLRDLNRCTPEVKIQ

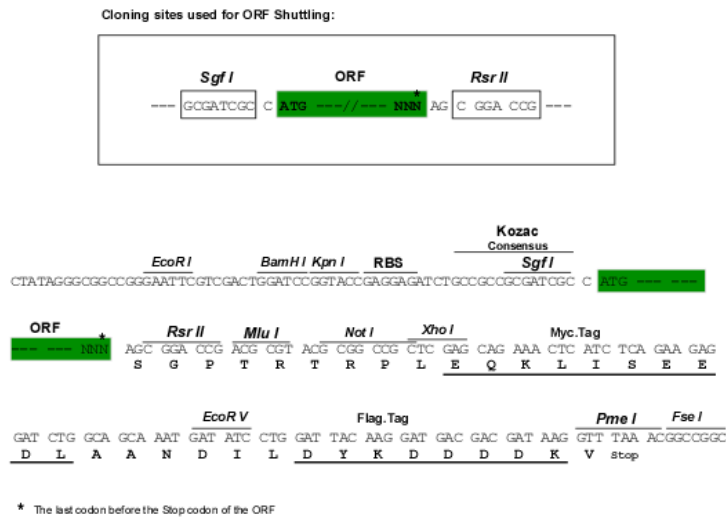
SGPTRTRPLEQKLISEEDLAANDILDYKDDDDKV

Chromatograms: https://cdn.origene.com/chromatograms/mk6801_e04.zip

Restriction Sites: SgfI-RsrII



[View online »](#)

Cloning Scheme:


ACCN: NM_198527

ORF Size: 420 bp

OTI Disclaimer: The molecular sequence of this clone aligns with the gene accession number as a point of reference only. However, individual transcript sequences of the same gene can differ through naturally occurring variations (e.g. polymorphisms), each with its own valid existence. This clone is substantially in agreement with the reference, but a complete review of all prevailing variants is recommended prior to use. [More info](#)

OTI Annotation: This clone was engineered to express the complete ORF with an expression tag. Expression varies depending on the nature of the gene.

Components: The ORF clone is ion-exchange column purified and shipped in a 2D barcoded Matrix tube containing 10ug of transfection-ready, dried plasmid DNA (reconstitute with 100 ul of water).

Reconstitution Method:

1. Centrifuge at 5,000xg for 5min.
2. Carefully open the tube and add 100ul of sterile water to dissolve the DNA.
3. Close the tube and incubate for 10 minutes at room temperature.
4. Briefly vortex the tube and then do a quick spin (less than 5000xg) to concentrate the liquid at the bottom.
5. Store the suspended plasmid at -20°C. The DNA is stable for at least one year from date of shipping when stored at -20°C.

RefSeq: [NM_198527.4](#)

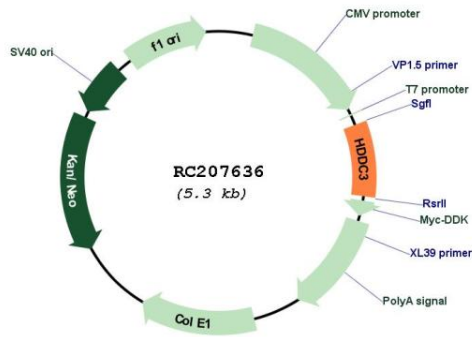
RefSeq Size: 1093 bp

RefSeq ORF: 423 bp

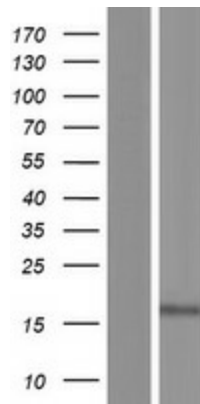
Locus ID: 374659

UniProt ID: [Q8N4P3](#)

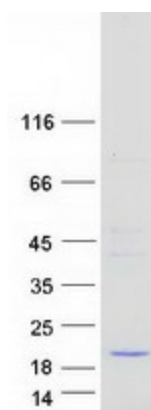
Cytogenetics: 15q26.1
MW: 15.7 kDa
Gene Summary: ppGpp hydrolyzing enzyme involved in starvation response.[UniProtKB/Swiss-Prot Function]

Product images:


Circular map for RC207636



Western blot validation of overexpression lysate (Cat# [LY404868]) using anti-DDK antibody (Cat# [TA50011-100]). Left: Cell lysates from untransfected HEK293T cells; Right: Cell lysates from HEK293T cells transfected with RC207636 using transfection reagent MegaTran 2.0 (Cat# [TT210002]).



Coomassie blue staining of purified HDDC3 protein (Cat# [TP307636]). The protein was produced from HEK293T cells transfected with HDDC3 cDNA clone (Cat# RC207636) using MegaTran 2.0 (Cat# [TT210002]).