

## Product datasheet for **RC207635**

### PCMTD1 (NM\_052937) Human Tagged ORF Clone

#### Product data:

Product Type:	Expression Plasmids
Product Name:	PCMTD1 (NM_052937) Human Tagged ORF Clone
Tag:	Myc-DDK
Symbol:	PCMTD1
Mammalian Cell Selection:	Neomycin
Vector:	pCMV6-Entry (PS100001)
E. coli Selection:	Kanamycin (25 ug/mL)
ORF Nucleotide Sequence:	>RC207635 representing NM_052937 Red=Cloning site Blue=ORF Green=Tags(s)

TTTTGTAATACGACTCACTATAGGGCGGCCGGAATTCGTCGACTGGATCCGGTACCGAGGAGATCTGCC  
GCC**CGATCGCC**

ATGGGAGGAGCTGTGAGTGTCTGGGAAGATAATGATGACTTAATTGATAATTTAAAAGAAGCTCAGTATA  
TTCGTAAGAGTGGAGCAAGCCTTCAGAGCGATTGATCGTGGAGATTACTATTTGGAAGGCTACAG  
AGACAATGCTTACAAAGACTTAGCCTGGAAGCATGAAACATCCACTTGTGAGCAGTTCATTTATTCT  
GAAGTTATGGAAGCATTGAACTTCAACCAGATTGCTTTTCTTAACCTGGGAAGTGAACCGGATATT  
TAAGTACAATGGTGGCTTAATTTTAGGTCCTTTTGAATAAATCATGGGATTGAGCTTCATTGAGATGT  
GGTGAATATGCCAAGGAAAACTGGAGAGCTTCATCAAAAATAGTGATAGCTTTGATAAATTTGAGTTC  
TGTGAACCTGCATTTGTTGTTGTAATTGCCTCCAGATAGCTTCTGACAGTCATCAGTATGATCGAATTT  
ATTGTGGAGCTGGAGTGCAGAAAGACCATGAAACTACATGAAAAATTACTAAAAGTTGGAGGCATATT  
AGTCATGCCTATAGAGGATCAGTTAACACAGATTATGCGAACTGGACAGAACACTTGGGAAAGTAAAAAT  
ATCCTTGCTGTTTCATTTGCTCCACTTGTGCAACCAAGTAAAGATGATAATGGCAAACAGATTCTGTGG  
GACTCCCTCCCTGTGCTGTCAGGAATCTACAGGACTTGGCTCGTATTTACATTGACGCACACTTAGAAA  
TTTCATAAATGATGAGATGCAGGCCAAGGGATTCCCTCAAAGGGCTCCACCCAAAAGGAAAAGAAAGAGA  
GTTAAACAGAGAATTAACACTTACGTATTTGTGGTAATCAGCTTATTCCTCAGCCTCTAGACAGTGAAG  
AGGATGAAAAATGGAAGAGGATAACAAAGAAGAGGAGGAAAAAGATCACAATGAAGCAATGAAGCCAGA  
GGAGCCACCTCAAATTTACTGAGAGAAAAATCATGAAGCTGCCCTCCCTGAATCTTTAAAAGCTTAC  
TTGACATATTTTAGACAAA

**ACGCGT**ACGCGGCCGCTCGAGCAGAACTCATCTCAGAAGAGGATCTGGCAGCAAATGATATCCTGGATT  
ACAAGGATGACGACGATAAGGTTTAA



[View online »](#)

**Protein Sequence:** >RC207635 representing NM\_052937  
Red=Cloning site Green=Tags(s)

MGGAVSAGEDNDDLIDNLKEAQYIRTERVEQAFRAIDRGDYYLEGYRDNAYKDLAWKHGNIHLSAPCIYS  
 EVMEALKLQPLSFLNLGSGTGYLSTMVGLILGPFGINHGIELHSDVVEYAKEKLESFIKNSDSFDKFEF  
 CEPAFVVGNCQLIASDSHQYDRIYCGAGVQKDHENYMKILLKVGILVMPIEDQLTQIMRTGQNTWESKN  
 ILAVSFAPLVQPSKNDNGKPDVGLPPCAVRNLQDLARIYIRRTLRFINDEMQAKGIPQRAPPKRKRKR  
 VKQRINTYVYVFNQLIPQLDSEDEKMEEDNKEEEEDKHNEAMKPEEPPQNLREKIMKLPLPELTKAY  
 LTYFRDK

TRTRPLEQKLISEEDLAANDILDYKDDDDKV

**Chromatograms:** [https://cdn.origene.com/chromatograms/ja1539\\_b06.zip](https://cdn.origene.com/chromatograms/ja1539_b06.zip)

**Restriction Sites:** SgfI-MluI

**Cloning Scheme:**

Cloning sites used for ORF Shuttling:



\* The last codon before the Stop codon of the ORF

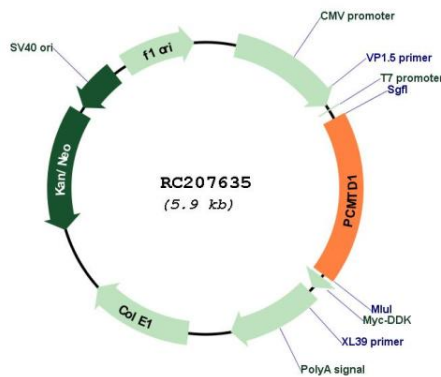
**ACCN:** NM\_052937

**ORF Size:** 1071 bp

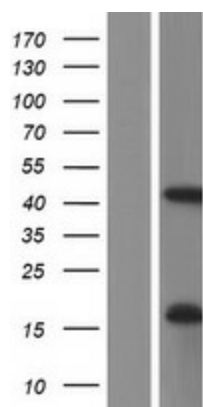
**OTI Disclaimer:** Due to the inherent nature of this plasmid, standard methods to replicate additional amounts of DNA in E. coli are highly likely to result in mutations and/or rearrangements. Therefore, OriGene does not guarantee the capability to replicate this plasmid DNA. Additional amounts of DNA can be purchased from OriGene with batch-specific, full-sequence verification at a reduced cost. Please contact our customer care team at [custsupport@origene.com](mailto:custsupport@origene.com) or by calling 301.340.3188 option 3 for pricing and delivery.

The molecular sequence of this clone aligns with the gene accession number as a point of reference only. However, individual transcript sequences of the same gene can differ through naturally occurring variations (e.g. polymorphisms), each with its own valid existence. This clone is substantially in agreement with the reference, but a complete review of all prevailing variants is recommended prior to use. [More info](#)

<b>OTI Annotation:</b>	This clone was engineered to express the complete ORF with an expression tag. Expression varies depending on the nature of the gene.
<b>Components:</b>	The ORF clone is ion-exchange column purified and shipped in a 2D barcoded Matrix tube containing 10ug of transfection-ready, dried plasmid DNA (reconstitute with 100 ul of water).
<b>Reconstitution Method:</b>	<ol style="list-style-type: none"> <li>1. Centrifuge at 5,000xg for 5min.</li> <li>2. Carefully open the tube and add 100ul of sterile water to dissolve the DNA.</li> <li>3. Close the tube and incubate for 10 minutes at room temperature.</li> <li>4. Briefly vortex the tube and then do a quick spin (less than 5000xg) to concentrate the liquid at the bottom.</li> <li>5. Store the suspended plasmid at -20°C. The DNA is stable for at least one year from date of shipping when stored at -20°C.</li> </ol>
<b>RefSeq:</b>	<u><a href="#">NM_052937.4</a></u>
<b>RefSeq Size:</b>	3967 bp
<b>RefSeq ORF:</b>	1074 bp
<b>Locus ID:</b>	115294
<b>UniProt ID:</b>	<u><a href="#">Q96MG8</a></u>
<b>Cytogenetics:</b>	8q11.23
<b>Domains:</b>	PCMT
<b>Protein Families:</b>	Druggable Genome
<b>MW:</b>	40.5 kDa

**Product images:**


Circular map for RC207635



Western blot validation of overexpression lysate (Cat# [LY409393]) using anti-DDK antibody (Cat# [TA50011-100]). Left: Cell lysates from untransfected HEK293T cells; Right: Cell lysates from HEK293T cells transfected with RC207635 using transfection reagent MegaTran 2.0 (Cat# [TT210002]).