

## Product datasheet for RC207633

### C4orf33 (NM\_173487) Human Tagged ORF Clone

#### Product data:

Product Type: Expression Plasmids  
Product Name: C4orf33 (NM\_173487) Human Tagged ORF Clone  
Tag: Myc-DDK  
Symbol: C4orf33  
Mammalian Cell Selection: Neomycin  
Vector: pCMV6-Entry (PS100001)  
E. coli Selection: Kanamycin (25 ug/mL)  
ORF Nucleotide Sequence: >RC207633 ORF sequence  
Red=Cloning site Blue=ORF Green=Tags(s)

TTTTGTAATACGACTCACTATAGGGCGGCCGGAATTCGTCGACTGGATCCGGTACCGAGGAGATCTGCC  
GCC**CGATCGCC**

ATGGATTTTAAAATTGAACACACTTGGGATGGTTTTCCAGTGAAGCATGAGCCCGTATTTATCAGGCTGA  
ATCCAGGTGACAGAGGAGTGATGATGGACATTAGTGCTCCATTTTTCCAGGGATCCTCCAGCCCCACTTGG  
AGAACCAGGAAAACCTTCAATGAAGTGTGGGATTATGAAGTTGTGGAAGCATTTTTCTTGAATGATATA  
ACTGAGCAATATTTAGAAGTTGAAGTGTCCACCGGACAGCATTTAGTGCTTTTACTTTCTGGAAGAA  
GAAATGTGTGGAACAAGAAGTTCCTTTATCGTTCAGAGTGTCCAGAGGAGAGACAAAATGGGAAGGCAA  
AGCTTATCTCCCTTGGAGTTATTTTCCACCAAATGTGACAAAATCAATTCATTTGCAATTCATGGATCA  
AAAGATAAACGAAGTTATGAAGCTCTTTACCCTGTACCTCAGCATGAACTGCAGCAAGGACAAAAACCTG  
ATTTCCATTGCCTAGAATACTTCAAGTCTTTCAATTTTAAACACTGCTTGGAGAAGAGTGGAAACAACC  
GGAATCAGACCTGTGGCTAATAGAGAAATGTGATATA

**ACGCGT**ACGCGGCCGCTCGAGCAGAACTCATCTCAGAAGAGGATCTGGCAGCAAATGATATCCTGGATT  
ACAAGGATGACGACGATAAGGTTTAA

Protein Sequence: >RC207633 protein sequence  
Red=Cloning site Green=Tags(s)

MDFKIEHTWDGFPVKHEPVFIRLNPGDRGVMMDISAPFFRDPPAPLGEKGFNFELWDYEVVEAFFLNDI  
TEQYLEVELCPHGQHLVLLLSGRRNVWKQELPLSFRVSRGETKWEKAYLPWSYFPPNVTKFNSFAIHGS  
KDKRSYEALYPVQHELQGGKPDFHCLYFKSFNFNTLLGEEWKQPESDLWLIKCDI

**TR**TRPLEQKLISEEDLAANDILDYKDDDDKV

Chromatograms: [https://cdn.origene.com/chromatograms/mk6337\\_a12.zip](https://cdn.origene.com/chromatograms/mk6337_a12.zip)



[View online »](#)

Restriction Sites: SgfI-MluI

Cloning Scheme:



ACCN: NM\_173487

ORF Size: 597 bp

OTI Disclaimer: The molecular sequence of this clone aligns with the gene accession number as a point of reference only. However, individual transcript sequences of the same gene can differ through naturally occurring variations (e.g. polymorphisms), each with its own valid existence. This clone is substantially in agreement with the reference, but a complete review of all prevailing variants is recommended prior to use. [More info](#)

OTI Annotation: This clone was engineered to express the complete ORF with an expression tag. Expression varies depending on the nature of the gene.

Components: The ORF clone is ion-exchange column purified and shipped in a 2D barcoded Matrix tube containing 10ug of transfection-ready, dried plasmid DNA (reconstitute with 100 ul of water).

- Reconstitution Method:
1. Centrifuge at 5,000xg for 5min.
  2. Carefully open the tube and add 100ul of sterile water to dissolve the DNA.
  3. Close the tube and incubate for 10 minutes at room temperature.
  4. Briefly vortex the tube and then do a quick spin (less than 5000xg) to concentrate the liquid at the bottom.
  5. Store the suspended plasmid at -20°C. The DNA is stable for at least one year from date of shipping when stored at -20°C.

RefSeq: [NM\\_173487.1](#), [NP\\_775758.1](#)

RefSeq Size: 1873 bp

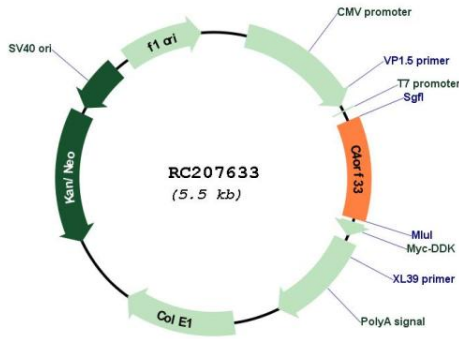
RefSeq ORF: 600 bp

Locus ID: 132321

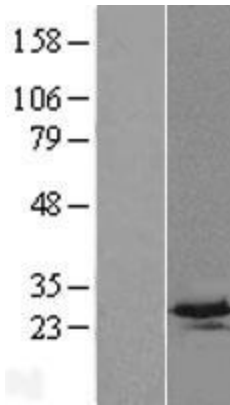
UniProt ID: [Q8N1A6](#)

Cytogenetics: 4q28.2  
 MW: 23.4 kDa

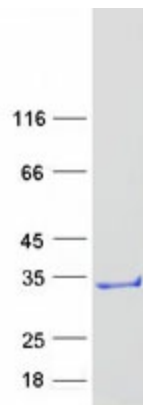
**Product images:**



Circular map for RC207633



Western blot validation of overexpression lysate (Cat# [LY420533]) using anti-DDK antibody (Cat# [TA50011-100]). Left: Cell lysates from untransfected HEK293T cells; Right: Cell lysates from HEK293T cells transfected with [RC216543] using transfection reagent MegaTran 2.0 (Cat# [TT210002]).



Coomassie blue staining of purified C4orf33 protein (Cat# [TP307633]). The protein was produced from HEK293T cells transfected with C4orf33 cDNA clone (Cat# RC207633) using MegaTran 2.0 (Cat# [TT210002]).