

## Product datasheet for **RC207632**

### ZNF545 (ZFP82) (NM\_133466) Human Tagged ORF Clone

#### Product data:

Product Type:	Expression Plasmids
Product Name:	ZNF545 (ZFP82) (NM_133466) Human Tagged ORF Clone
Tag:	Myc-DDK
Symbol:	ZNF545
Synonyms:	ZNF545
Mammalian Cell Selection:	Neomycin
Vector:	pCMV6-Entry (PS100001)
E. coli Selection:	Kanamycin (25 ug/mL)



[View online »](#)

**ORF Nucleotide Sequence:**

>RC207632 ORF sequence  
 Red=Cloning site Blue=ORF Green=Tags(s)

TTTTGTAATACGACTCACTATAGGGCGGCCGGAATTCGTCGACTGGATCCGGTACCGAGGAGATCTGCC  
 GCC**CGCATCGCC**

ATGGCCCTTCGATCAGTGATGTTTCAGTGATGTATCCATAGACTTCTCTCCAGAAGAGTGGGAATACCTGG  
 ACTTGGAAACAAAAGGACTTGTACAGAGATGTCATGTTGGAGAAGTACAGCAACTTGGTCTACTGGGATG  
 CTTCAATTTCTAAACCAGATGTGATTTCTCATTGGAGCAAGGAAAAGAGCCTTGGAAAAGTTGTGAGGAAA  
 GGAAGAAGACAATATCCAGATTTGGAGACCAAGTATGAGACCAAGAAGTTATCTTTAGAAAATGACATTT  
 ATGAAATAAATTTATCCCAGTGGGAAGATAATGGAAAGAATTGAAAACCATGGCCTTAAGGGTCTCATTTT  
 AAAAAATGATTGGGAATCCACAGGAAAAATTGAAGGACAGGAGAGACCTCAAGAAGGATACTTCAGTAGT  
 GTGAAAATGCCATCTGAAAAGGTGTCCTTACCAGAAACGCACATCTGTTACTCCACATCAGAGACTTC  
 ATTTTGTGATAAACCTATGAATGTAAGGAATGTGGGAAGCGTTCAGAGTGCAGCAACAGCTTACTTT  
 TCATCACAGAATTCATACTGGTAAAAACCGTATGAATGTAAGGAATGTGGGATGGCCTTCAGACAGACT  
 GCACACCTTACTCGACATCAGAGACTTCATTCTGGTAAAAACTCTATGAATGTAAGGAATGTGGGGAAG  
 CTTTCATATGTGGTGCAGATCTTAGAGTACATCAGAAAATGCATATTGGTGAAGGCCATGAATGTAA  
 AGAATGTGGGAAGGCTTTTAGGGTACGAGGACAACCTTACTCTGCATCAGAGGATTCATACTGGTGAAGAA  
 CCCTATGTGTGTAAGAGTGTGGAAAAGCCTTTAGACAGTACGCACACCTGACTCGGCATCAGAAGCTTA  
 ATAGTGTGACAGGCTCTATGAATGCAAAGAATGTGGGAAGGCCTTTTTGTGGCTCTGGTCTTAGAGT  
 ACATCACAAACTTCATACTGGTGAAGAACCTATGAATGTAAGGAATGCGGAAGGCCCTTAGAGTGCAG  
 CAACAATAACTCCATCAGAGAATTCATACTGGTGAAGAACCTATGAATGTAAGGAATGTGGAAAGA  
 CCTTTAGCCGTGGCTATCATCTTATTCTCCATCACAGAATTCATACTGGTGAAGAACCTTACGAATGTAA  
 GGAATGCTGGAAGCCTTTAGTCGCTACTCACAACTTATTTACATCAGAGTATTCATATTGGTGTAAAG  
 CCCTATGACTGTAAGGAATGCGGAAGGCCCTTCAGACTACTTTTCACAACTCACACAGCATCAGAGTATTC  
 ATATTGGTGAAGAACCTTATAAATGTAAGGAATGTGGCAAGGCCCTTAGATTGCGCAAAAAACTTACTCT  
 ACATCAGAGCATTACTGCGCAAAAAACCTTTGAGTGAAGGAATGTAGGAAGGCCCTTAGAGCTTAAT  
 TCATCCCTTATTCACATCTGAGAATTCATTCTGGTGAAGAACCTATGAATGTAAGGAATGTAAGAAGG  
 CCTTAGCAACATTACACCTTACTCATCTGAAAATTCATAATGTAATAATC

**ACGCGT**ACGCGGCCGCTCGAGCAGAAACTCATCTCAGAAGAGGATCTGGCAGCAAATGATATCCTGGATT  
 ACAAGGATGACGACGATAAGGTTTAA

**Protein Sequence:**

>RC207632 protein sequence  
 Red=Cloning site Green=Tags(s)

MALRSVMFSDVSDIFSPEEWEYLDLEQKDLYRDVMLENYSNLVSLGCFISKPDVISSLEQKPEPWKVVVK  
 GRRQYPDLETKYETKLSLENDIYEINLSQWKIMERIENHGLKGLILKNDWESTGKIEGQERPQEGYFSS  
 VKMPSEKVSQKRTSVTPHQRLHFVDKPYECKECGKAFRVRQQLTFHHRHTGKPYECKECGMAFRQT  
 AHLTRHQRLHSGEKLVECKEAFICGADLRVHQMHIGKPYECKECGKAFRVRGQLTLHQRIHTGK  
 PYVCKEKGAFRQY AHLTRHQKLNADRLVECKEKGAFLCGSLRVHHLHTGKPYECKEKGAFRVR  
 QQLTLHQRIHTGKPYECKEKGKTF SRGYHLILHHRHTGKPYECKEKGAFSRYSQLISHQSIHIGVK  
 PYDCKEKGAFRLLSQLTQHQSIIHIGKPYKCKEKGAFRLRQKLTQHQSIIHTGKPFECKEKRKAFRLN  
 SSLIQHLRIHSGEKPVECKECKAFRQSHLTHHLKIHNVKI

**TR**TRPLEQKLISEEDLAANDILDYKDDDDKV

**Chromatograms:**

[https://cdn.origene.com/chromatograms/mk6517\\_c05.zip](https://cdn.origene.com/chromatograms/mk6517_c05.zip)

**Restriction Sites:**

SgfI-MluI

**Cloning Scheme:**


**ACCN:** NM\_133466

**ORF Size:** 1596 bp

**OTI Disclaimer:** The molecular sequence of this clone aligns with the gene accession number as a point of reference only. However, individual transcript sequences of the same gene can differ through naturally occurring variations (e.g. polymorphisms), each with its own valid existence. This clone is substantially in agreement with the reference, but a complete review of all prevailing variants is recommended prior to use. [More info](#)

**OTI Annotation:** This clone was engineered to express the complete ORF with an expression tag. Expression varies depending on the nature of the gene.

**Components:** The ORF clone is ion-exchange column purified and shipped in a 2D barcoded Matrix tube containing 10ug of transfection-ready, dried plasmid DNA (reconstitute with 100 ul of water).

- Reconstitution Method:**
1. Centrifuge at 5,000xg for 5min.
  2. Carefully open the tube and add 100ul of sterile water to dissolve the DNA.
  3. Close the tube and incubate for 10 minutes at room temperature.
  4. Briefly vortex the tube and then do a quick spin (less than 5000xg) to concentrate the liquid at the bottom.
  5. Store the suspended plasmid at -20°C. The DNA is stable for at least one year from date of shipping when stored at -20°C.

**RefSeq:** [NM\\_133466.4](#)

**RefSeq Size:** 2635 bp

**RefSeq ORF:** 1599 bp

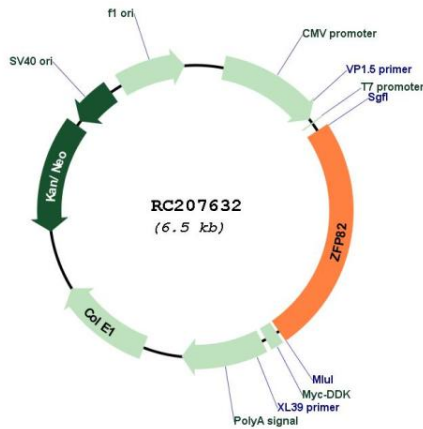
**Locus ID:** 284406

**UniProt ID:** [Q8N141](#)

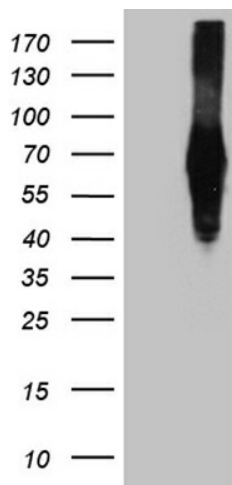
**Cytogenetics:** 19q13.12

**Protein Families:** Transcription Factors  
**MW:** 62.6 kDa  
**Gene Summary:** May be involved in transcriptional regulation.[UniProtKB/Swiss-Prot Function]

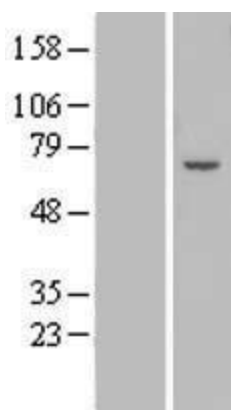
**Product images:**



Circular map for RC207632



HEK293T cells were transfected with the pCMV6-ENTRY control (Cat# [PS100001], Left lane) or pCMV6-ENTRY ZFP82 (Cat# RC207632, Right lane) cDNA for 48 hrs and lysed. Equivalent amounts of cell lysates (5 ug per lane) were separated by SDS-PAGE and immunoblotted with anti-ZFP82(Cat# [TA812054]). Positive lysates [LY408803] (100ug) and [LC408803] (20ug) can be purchased separately from OriGene.



Western blot validation of overexpression lysate (Cat# [LY408803]) using anti-DDK antibody (Cat# [TA50011-100]). Left: Cell lysates from untransfected HEK293T cells; Right: Cell lysates from HEK293T cells transfected with RC207632 using transfection reagent MegaTran 2.0 (Cat# [TT210002]).