

Product datasheet for **RC207630**

Tumor protein D52 like 3 (TPD52L3) (NM_001001874) Human Tagged ORF Clone

Product data:

Product Type: Expression Plasmids
Product Name: Tumor protein D52 like 3 (TPD52L3) (NM_001001874) Human Tagged ORF Clone
Tag: Myc-DDK
Symbol: Tumor protein D52 like 3
Synonyms: D55; hD55; NYDSP25; TPD55
Mammalian Cell Selection: Neomycin
Vector: pCMV6-Entry (PS100001)
E. coli Selection: Kanamycin (25 ug/mL)
ORF Nucleotide Sequence: >RC207630 ORF sequence
 Red=Cloning site Blue=ORF Green=Tags(s)

TTTTGTAATACGACTCACTATAGGGCGGCCGGAATTCGTCGACTGGATCCGGTACCGAGGAGATCTGCC
GCC**CGATCGCC**

ATGCCACATGCCAGGACAGAGACCTCTGTGGGCACATAGAATCCCACTCGACTTCTGAACTGGAGGATC
TGACAGAGCCCGAGCAAAGAGAGCTCAAACCAAACCTACTAAATGGAGGCTGAAATTGTAACCCTACG
CCACGTAAGTGGCAGCCAAAGAGAGACGCTGTGGGAACTCAAGAGGAAGTTAGGCCTCACCGCCTTGTA
GGGCTGAGACAGAATCTGTCCAAGAGCTGGCTTGATGTTTCAGGTCTCAACACCTATGTAAACAGAAGA
CATCAGCTGCTCTGTCCACCATGGGCACCTCATCTGCAGGAAGCTTGGAGGCGTGAAGAAGTCGGCCAC
ACTCAGATCTTTGAAGGATTGATCTTCAATAAATACACGTAAATCAAGGAAGGAAT

ACGCGTACGCGGCCGCTCGAGCAGAACTCATCTCAGAAGAGGATCTGGCAGCAAATGATATCCTGGATT
ACAAGGATGACGACGATAAGGTTTAA

Protein Sequence: >RC207630 protein sequence
 Red=Cloning site Green=Tags(s)
 MPHARTETSVGTYESHSTSELEDLTEPEQRELKTKLTKLEAEIVTLRHVLAAKERRCGELKRKLGLTALV
 GLRQNLKSKSWLDVQVSNITYVKQKTSAAALSTMGTLICRKLGGVKKSATLRSFEGLI FNKYTLNQGRN

TRTRPLEQKLISEEDLAANDILDYKDDDDKV

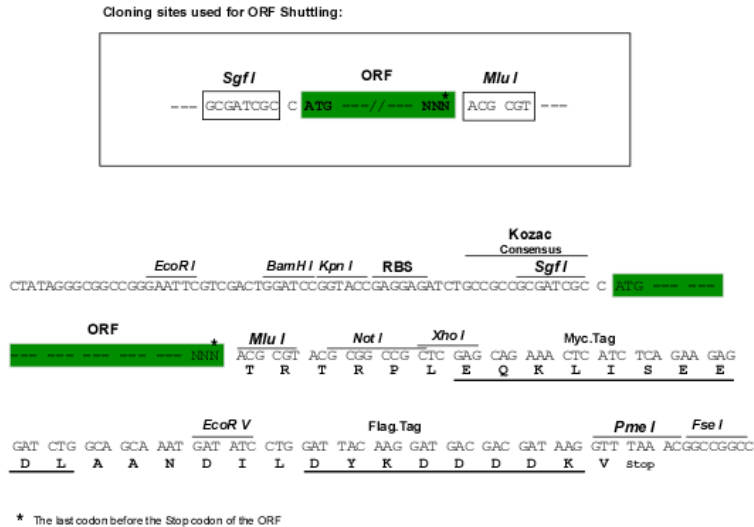
Chromatograms: https://cdn.origene.com/chromatograms/mk6335_a12.zip

Restriction Sites: SgfI-MluI



[View online »](#)

Cloning Scheme:



ACCN: NM_001001874

ORF Size: 408 bp

OTI Disclaimer: The molecular sequence of this clone aligns with the gene accession number as a point of reference only. However, individual transcript sequences of the same gene can differ through naturally occurring variations (e.g. polymorphisms), each with its own valid existence. This clone is substantially in agreement with the reference, but a complete review of all prevailing variants is recommended prior to use. [More info](#)

OTI Annotation: This clone was engineered to express the complete ORF with an expression tag. Expression varies depending on the nature of the gene.

Components: The ORF clone is ion-exchange column purified and shipped in a 2D barcoded Matrix tube containing 10ug of transfection-ready, dried plasmid DNA (reconstitute with 100 ul of water).

- Reconstitution Method:**
1. Centrifuge at 5,000xg for 5min.
 2. Carefully open the tube and add 100ul of sterile water to dissolve the DNA.
 3. Close the tube and incubate for 10 minutes at room temperature.
 4. Briefly vortex the tube and then do a quick spin (less than 5000xg) to concentrate the liquid at the bottom.
 5. Store the suspended plasmid at -20°C. The DNA is stable for at least one year from date of shipping when stored at -20°C.

RefSeq: [NM_001001874.3](#)

RefSeq Size: 1560 bp

RefSeq ORF: 411 bp

Locus ID: 89882

UniProt ID: [Q96J77](#)

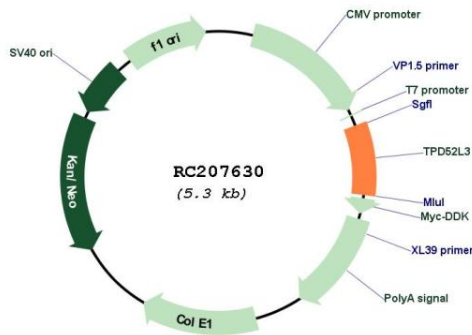
Cytogenetics: 9p24.1

Protein Families: Druggable Genome

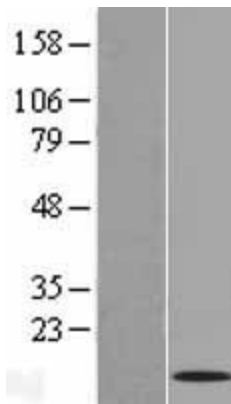
MW: 15.2 kDa

Gene Summary: This gene encodes a member of the tumor protein D52-like family of proteins. These proteins are characterized by an N-terminal coiled-coil motif that is used to form homo- and heteromeric complexes with other tumor protein D52-like proteins. The encoded protein may play a role in spermatogenesis. Alternative splicing results in multiple transcript variants. [provided by RefSeq, Oct 2009]

Product images:



Circular map for RC207630



Western blot validation of overexpression lysate (Cat# [LY424257]) using anti-DDK antibody (Cat# [TA50011-100]). Left: Cell lysates from untransfected HEK293T cells; Right: Cell lysates from HEK293T cells transfected with RC207630 using transfection reagent MegaTran 2.0 (Cat# [TT210002]).