

Product datasheet for RC207625

Zinc Alpha 2 Glycoprotein (AZGP1) (NM_001185) Human Tagged ORF Clone

Product data:

Product Type:	Expression Plasmids
Product Name:	Zinc Alpha 2 Glycoprotein (AZGP1) (NM_001185) Human Tagged ORF Clone
Tag:	Myc-DDK
Symbol:	Zinc Alpha 2 Glycoprotein
Synonyms:	ZA2G; ZAG
Mammalian Cell Selection:	Neomycin
Vector:	pCMV6-Entry (PS100001)
E. coli Selection:	Kanamycin (25 ug/mL)
ORF Nucleotide Sequence:	>RC207625 ORF sequence Red=Cloning site Blue=ORF Green=Tags(s)

TTTTGTAATACGACTCACTATAGGGCGGCCGGAATTCGTCGACTGGATCCGGTACCGAGGAGATCTGCC
GCC**CGGATCGCC**

ATGGTAAGAAATGGTGCCTGTCCTGCTGTCTCTGCTGCTGCTTCTGGTCTGCTGTCCCCAGGAGAACC
AAGATGGTCGTTACTCTCTGACCTATATCTACACTGGGCTGTCCAAGCATGTTGAAGACGTCCCCGCGTT
TCAGGCCCTTGGCTCACTCAATGACCTCCAGTTCCTTAGATAACAACAGTAAAGACAGGAAGTCTCAGCCC
ATGGGACTCTGGAGACAGGTGGAAGGAATGGAGGATTGGAAGCAGGACAGCCAATTCAGAAGGCCAGGG
AGGACATCTTTATGGAGACCCTGAAAGACATTGTGGAGTATTACAACGACAGTAACGGGTCTCACGTATT
GCAGGGAAGGTTTGGTTGTGAGATCGAGAATAACAGAAGCAGCGGAGCATTCTGGAAATATTACTATGAT
GGAAAGGACTACATTGAATTCACAAAGAAATCCAGCCTGGGTCCCCTTCGACCCAGCAGCCCAGATAA
CCAAGCAGAAGTGGGAGGCAGAACCAGTCTACGTGCAGCGGGCCAAGGCTTACCTGGAGGAGGAGTGCC
TGCGACTCTGCGGAAATACCTGAAATACAGCAAAAATATCCTGGACCGGCAAGATCCTCCCTCTGTGGT
GTCACCAGCCACCAGGCCCCAGGAGAAAAGAAGAACTGAAGTGCTGGCCTACGACTTCTACCCAGGGA
AAATTGATGTGCACTGGACTCGGGCCGGCAGGTGCAGGAGCCTGAGTTACGGGGAGATGTTCTTCAAA
TGGAAATGGCACTTACCAGTCTGGGTGGTGGTGGCAGTGCCCCGCAGGACACAGCCCCCTACTCTGC
CACGTGCAGCACAGCAGCCTGGCCAGCCCCCTGTTGGTCCCTGGGAGGCCAGC

ACGCGTACGCGGCCGCTCGAGCAGAAACTCATCTCAGAAGAGGATCTGGCAGCAAATGATATCCTGGATT
ACAAGGATGACGACGATAAGGTTAA



[View online »](#)

Protein Sequence: >RC207625 protein sequence
 Red=Cloning site Green=Tags(s)

MVRMVPVLLSLLLLLGPVAVPQENQDGRYSLTYIYTGLSKHVEDVPAFQALGSLNDLQFFRYNSKDRKSQP
 MGLWRQVEGMEDWKQDSQLQKAREDI FMETLKDI VEYYNDSNGSHVLQGRFGCEIENNRSSGAFWKYYVD
 GKDYIEFNKEIPAWVPFDAAQITKQKWEAEPVYVQRAKAYLEEECPATLRKYLKYSKNILDRQDPPSVV
 VTSHQAPGEKKLKLCLAYDFYPGKIDVHWTRAGEVQEPELRGDVHLHNGNGTYQSWVVVAVPPQDTAPYSC
 HVQHSSLAQPLVVPWEAS

TRTRPLEQKLISEEDLAANDILDYKDDDDKV

Chromatograms: https://cdn.origene.com/chromatograms/mk6287_b09.zip

Restriction Sites: SgfI-MluI

Cloning Scheme:

Cloning sites used for ORF Shuttling:



* The last codon before the Stop codon of the ORF

ACCN: NM_001185

ORF Size: 894 bp

OTI Disclaimer: The molecular sequence of this clone aligns with the gene accession number as a point of reference only. However, individual transcript sequences of the same gene can differ through naturally occurring variations (e.g. polymorphisms), each with its own valid existence. This clone is substantially in agreement with the reference, but a complete review of all prevailing variants is recommended prior to use. [More info](#)

OTI Annotation: This clone was engineered to express the complete ORF with an expression tag. Expression varies depending on the nature of the gene.

Components: The ORF clone is ion-exchange column purified and shipped in a 2D barcoded Matrix tube containing 10ug of transfection-ready, dried plasmid DNA (reconstitute with 100 ul of water).

Reconstitution Method:

1. Centrifuge at 5,000xg for 5min.
2. Carefully open the tube and add 100ul of sterile water to dissolve the DNA.
3. Close the tube and incubate for 10 minutes at room temperature.
4. Briefly vortex the tube and then do a quick spin (less than 5000xg) to concentrate the liquid at the bottom.
5. Store the suspended plasmid at -20°C. The DNA is stable for at least one year from date of shipping when stored at -20°C.

Note: Plasmids are not sterile. For experiments where strict sterility is required, filtration with 0.22um filter is required.

RefSeq: [NM_001185.1](#)

RefSeq Size: 1278 bp

RefSeq ORF: 897 bp

Locus ID: 563

UniProt ID: [P25311](#)

Cytogenetics: 7q22.1

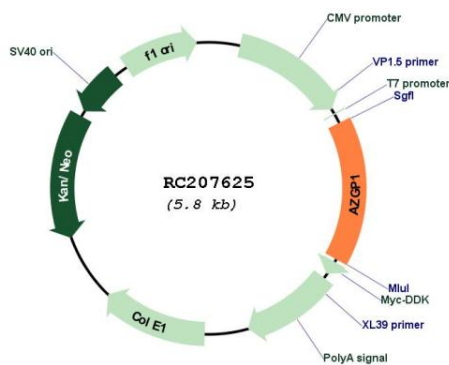
Domains: MHC_I, ig, IGc1

Protein Families: Secreted Protein

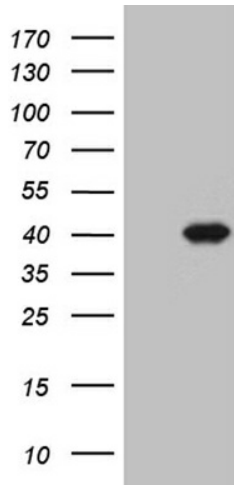
MW: 34.3 kDa

Gene Summary: Stimulates lipid degradation in adipocytes and causes the extensive fat losses associated with some advanced cancers. May bind polyunsaturated fatty acids.[UniProtKB/Swiss-Prot Function]

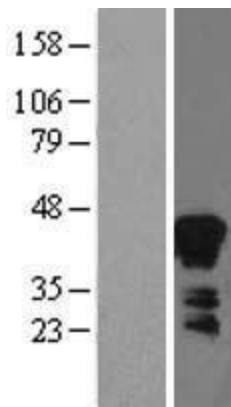
Product images:



Circular map for RC207625



HEK293T cells were transfected with the pCMV6-ENTRY control (Cat# [PS100001], Left lane) or pCMV6-ENTRY AZGP1 (Cat# RC207625, Right lane) cDNA for 48 hrs and lysed. Equivalent amounts of cell lysates (5 ug per lane) were separated by SDS-PAGE and immunoblotted with anti-AZGP1 (Cat# [TA812185]). Positive lysates [LY420084] (100ug) and [LC420084] (20ug) can be purchased separately from OriGene.



Western blot validation of overexpression lysate (Cat# [LY420084]) using anti-DDK antibody (Cat# [TA50011-100]). Left: Cell lysates from untransfected HEK293T cells; Right: Cell lysates from HEK293T cells transfected with RC207625 using transfection reagent MegaTran 2.0 (Cat# [TT210002]).